

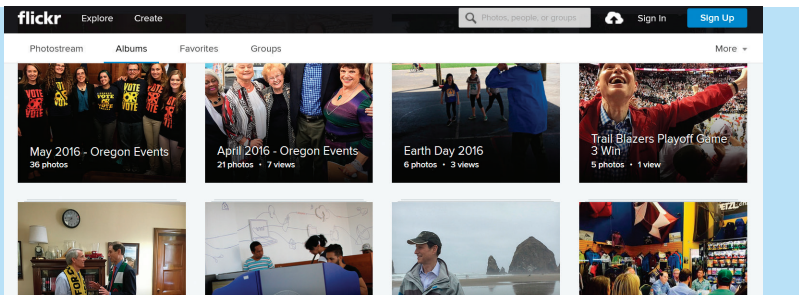
# FIVE STEPS

## to Creating an Esri® Story Map Tour™

Take users on a journey using Esri® Story Map Tour™—an app that allows you to present a linear, place-based narrative featuring images or videos. Each story point in the narrative is geolocated, allowing your users to click through sequentially or browse by interacting with the map. Esri Story Maps provide a visual platform to share how your representative is working for your constituents when back in the district.

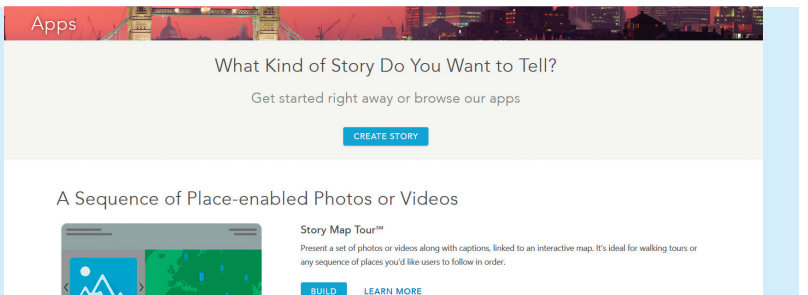
### 1 Capture and organize your photos:

- Take pictures on a GPS-enabled camera or smartphone.
- Upload geotagged photos to a Flickr album.



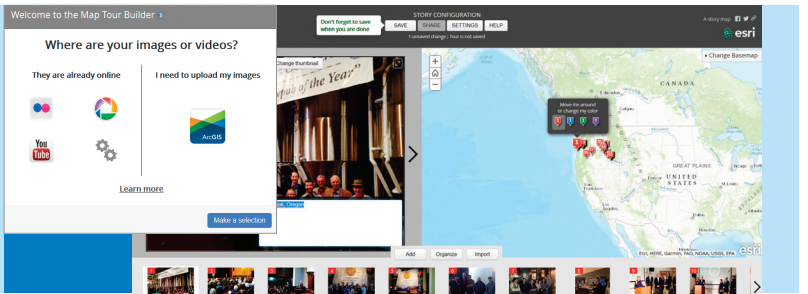
### 2 Access the Esri Story Map Tour template:

- Sign in with your Senate Analytical Mapping System (SAMS)/HouseMAP account at [storymaps.arcgis.com](http://storymaps.arcgis.com).
- Launch the builder for the Esri Story Map Tour app.



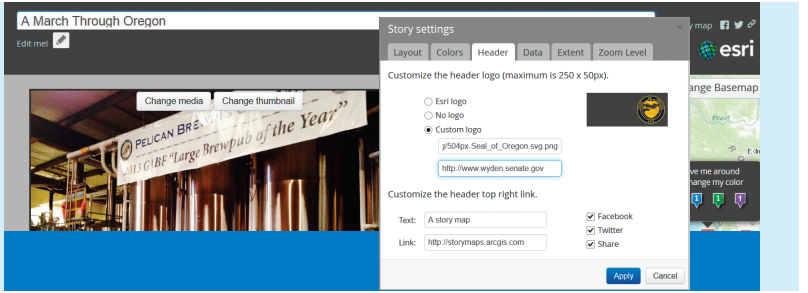
### 3 Import and configure your photos:

- Select the Flickr option and import your album.
- Edit the titles, captions, icon colors, and order of the photos.



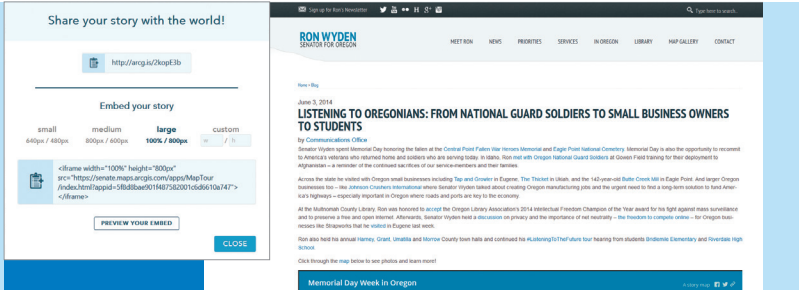
### 4 Configure the application settings:

- Edit the title and caption of the Esri Story Map Tour app.
- Use your custom colors and logo.



### 5 Share with the public:

- Make your Esri Story Map Tour app public.
- Embed the app on or link it from your website.



## GET STARTED NOW

Senate Staff, contact [SAAGISTraining@saa.senate.gov](mailto:SAAGISTraining@saa.senate.gov).

House Staff, contact the CAO Help Desk at 202-225-6002 or 1-800-HIR-USER.

To learn more about how congressional staff are using ArcGIS®, visit [go.esri.com/policywebinars](http://go.esri.com/policywebinars).

