

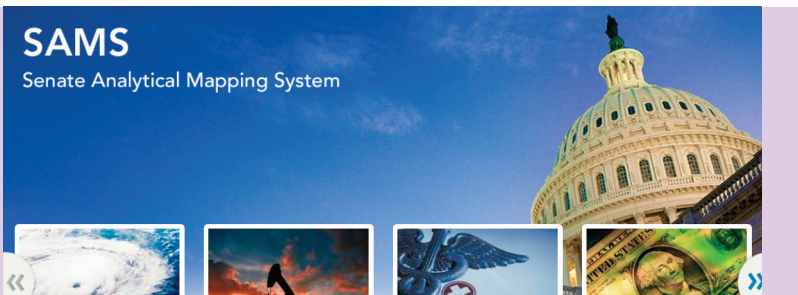
FIVE STEPS

to Mapping Public Lands

Legislative staff can better investigate policy issues by using ArcGIS® to collect, manage, analyze, and disseminate data. All levels of GIS users can leverage Esri® technology to conduct spatial analysis and add eye-catching visuals to reports for office or committee work. In the example below, learn how you can map public lands by state or district by using the authoritative web mapping layers already available in the Senate Analytical Mapping System (SAMS) and HouseMAP.

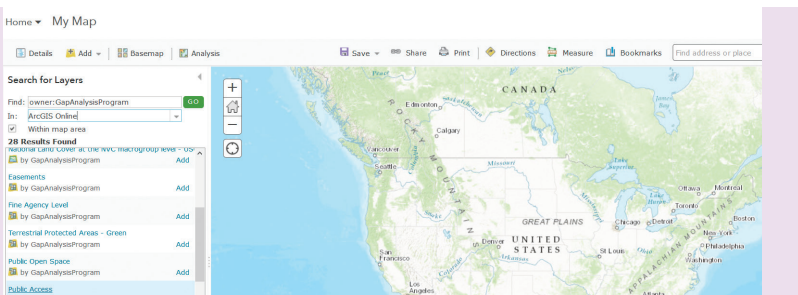
1 Access the Map Viewer in SAMS/HouseMAP:

- Sign in at arcgis.com with your SAMS or HouseMAP login.
- Go to the Map Viewer.



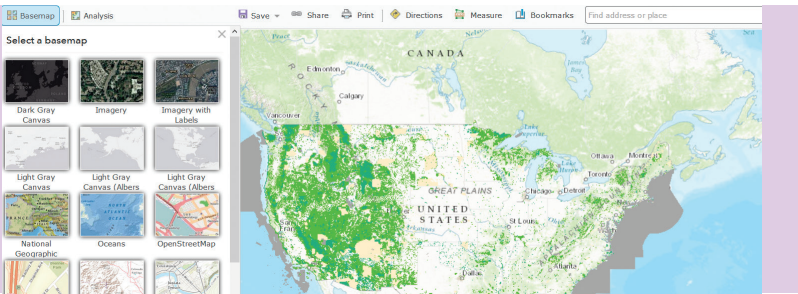
2 Add the public lands data:

- Add a layer from ArcGIS Online.
- Search for the PAD-US layer.



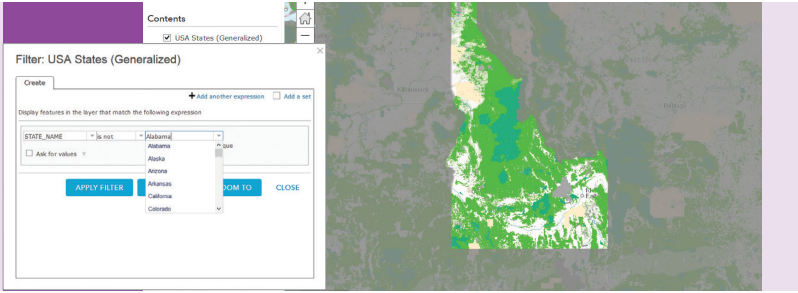
3 Choose a basemap:

- Select an appropriate basemap from the gallery for context.
- Adjust the public lands transparency if needed.



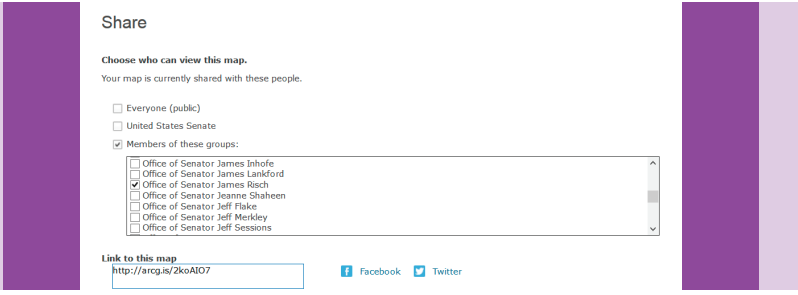
4 Highlight your state or district:

- Add the states or congressional districts layer.
- Filter and style to mask out surrounding areas.



5 Share your map:

- Save your configured map.
- Share it with your colleagues through a group.



GET STARTED NOW

Senate Staff, contact SAAGISTraining@saa.senate.gov.

House Staff, contact the CAO Help Desk at 202-225-6002 or 1-800-HIR-USER.

To learn more about how ArcGIS is helping congressional staff map public lands, visit go.esri.com/policywebinars.

