

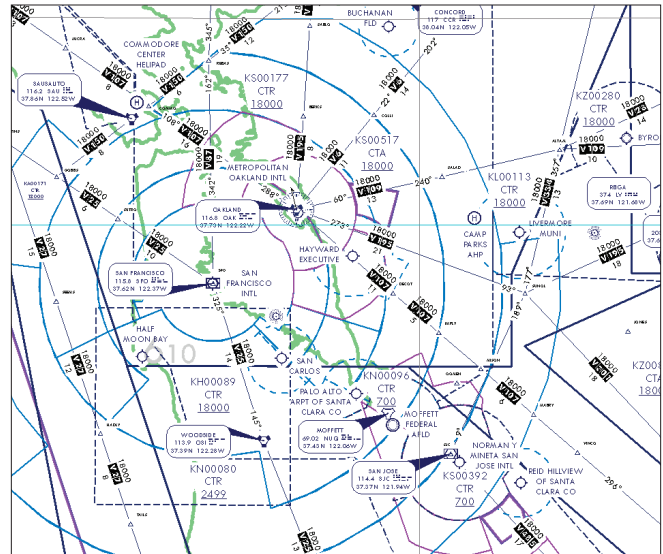
Esri® Aeronautical Solution

Use the Full Power of GIS to Efficiently Manage Aeronautical Information

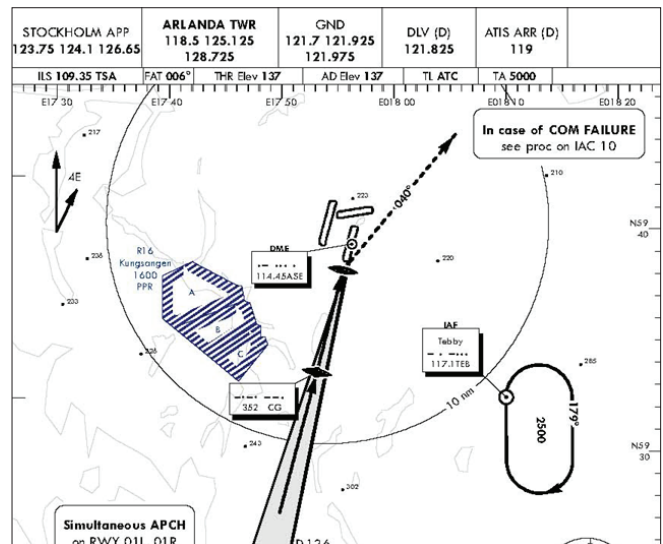
Esri® Aeronautical Solution provides a true geographic information system (GIS)-based platform to manage aeronautical data and rapidly produce high-quality charts that adhere to industry- and organization-specific requirements. Civil and military agencies, commercial airlines, airports, and chart producers can create, maintain, and use standard airport and aeronautical products based on the latest digital data.

Key Benefits

- Significantly reduce chart production time by managing data and generating aeronautical charts from a central database.
- Produce charts to your cartographic specifications from the database, including International Civil Aviation Organization (ICAO)-compliant charts.
- Add value for customers by supporting custom requests.
- Share data within the aeronautical community using the Aeronautical Information Exchange Model (AIXM).
- Enhance data quality through direct loading of digital changes and automated change verification workflow management.



Efficiently produce and maintain database-driven enroute charts.



Utilize invaluable, specialized cartographic tools, such as the Graphic Table Element, in producing your chart products.



Key Features

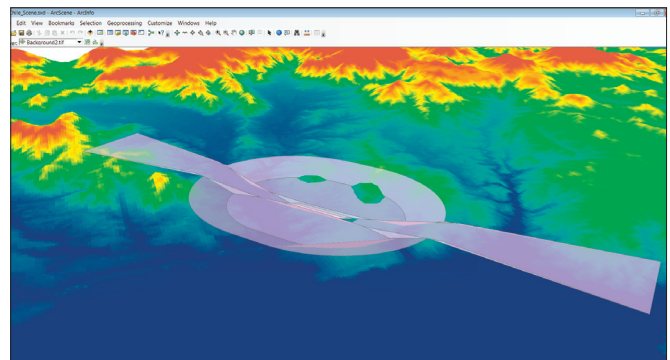
Esri Aeronautical Solution includes data management tools, database models, cartographic functionality, and workflow management components that enable you to do the following:

- Edit data once and have all the charts using that data update automatically
- Streamline data editing operations with aeronautical product-specific tools and a robust, map-based workspace for visual editing
- Create, maintain, and update aeronautical charts with database-driven cartography that includes symbology, labels, and map surround elements
- Perform quality control and data review via logical and spatial checks, statistical sampling, and batch rule-based checks
- Use or customize the included samples and templates to create your production specifications or styles quickly
- Manage both GIS and non-GIS enterprise workflows
- Provide support for AIXM and Electronic Terrain and Obstacle Data (eTOD) aeronautical standards and compatibility with European AIS Database (EAD)
- Simplify Obstacle Identification Surface (OIS) development and analysis with automated tools
- Streamline analysis, correction, and submission of Airports GIS data to the FAA through customizable workflows, reducing the chances of costly and time-consuming rework

Training and Implementation Packages

The following options are available to help you begin using Esri Aeronautical Solution:

- Standard classroom training
- Custom workshops
- On-site implementation and configuration support
- Remote implementation and configuration support



Analyze vertical obstacles using geoprocessing tools and visualization.

For more information or to request a free trial, visit esri.com/aeronauticalsolution or e-mail aero@esri.com.

