



AN ESRI
TECHNICAL PAPER

August 2023

ArcGIS Pro 3.0.3, ArcGIS Enterprise 11.0, and ArcGIS Earth 1.17 Enterprise Deployment

380 New York Street
Redlands, California 92373-8100 usa
909 793 2853
info@esri.com
esri.com



Copyright © 2023 Esri
All rights reserved.
Printed in the United States of America.

The information contained in this document is the exclusive property of Esri. This work is protected under United States copyright law and other international copyright treaties and conventions. No part of this work may be reproduced or transmitted in any form or by any means, electronic or mechanical, including photocopying and recording, or by any information storage or retrieval system, except as expressly permitted in writing by Esri. All requests should be sent to Attention: Contracts and Legal Services Manager, Esri, 380 New York Street, Redlands, CA 92373-8100 USA.

The information contained in this document is subject to change without notice.

Esri, the Esri globe logo, The Science of Where, ArcGIS, [esri.com](https://www.esri.com), and @esri.com are trademarks, service marks, or registered marks of Esri in the United States, the European Community, or certain other jurisdictions. Other companies and products or services mentioned herein may be trademarks, service marks, or registered marks of their respective mark owners.

ArcGIS Pro 3.0.3, ArcGIS Enterprise 11.0, and ArcGIS Earth 1.17 Enterprise Deployment

An Esri Technical Paper

Contents	Page
Introduction.....	1
Enterprise Deployment Using Active Directory—Group Policy or SCCM	2
Enterprise Deployment Using Chef cookbooks for ArcGIS.....	3
Enterprise Deployment Using PowerShell DSC for ArcGIS	3
Planning Software Deployment	3
Download and Extract Setups	3
System Requirements	4
Setup Requirements.....	4
Upgrading to 11.0	8
Licensing for ArcGIS Pro 3.0.3	8
Enterprise Deployment Using Active Directory and Group Policy	14
Introduction.....	14
Create Software Distribution Share	15
Create New GPO	15
Edit GPO	16
Enforce GPO.....	17
Start Software Installation.....	17
Upgrading to 11.0.....	18
Customize Group Policy Installation.....	19
Creating Transforms.....	20
Applying a Transform	21
Deploying Localized Setups Using Group Policy.....	21
Create Localized Setup GPO	21
Create Language Pack GPO.....	23
GPO Link Order.....	23

Contents	Page
Deploying Patches and QFEs Using Group Policy	24
Uninstalling Setups Deployed Using Group Policy	25
Enterprise Deployment Using SMS/SCCM	26
Introduction	26
Create Software Distribution Share	26
Create Package	27
Create Program	27
Create Advertisement	28
Start Software Installation	28
Upgrading to 11.0	28
Deploying Localized Setups Using SCCM	28
Uninstalling Setups Using SCCM	29
Deploying ArcGIS Enterprise 11.0 Patches and QFEs	
Using SMS or SCCM	29
Troubleshooting the Installation	30
ArcGIS Pro	31
Setup Dependency	32
Feature Dependency	32
Properties	32
Features Available	36
Localized Setups	37
Transforms	37
Uninstall	38
Software Updates	39
ArcGIS Pro configuration (Registry - Per machine)	39
ArcGIS Pro configuration (Registry - Per User)	42
ArcGIS Pro configuration (settings file)	43
ArcGIS Pro Licensing Service	44
Setup Dependency	44
Feature Dependency	44
Properties	44
Features Available	44
Localized Setups	44
Uninstall	44
ArcGIS Pro Language Packs	44
Setup Dependency	45
Feature Dependency	45
Command Line Parameters	45
Features Available	45
Transforms	45
Uninstall	45

Contents	Page
ArcGIS Pro Help	46
Setup Dependency	46
Feature Dependency	46
Command Line Parameters.....	46
Features Available.....	47
Localized Setups	47
Transforms	47
Uninstall.....	47
ArcGIS Data Interoperability for ArcGIS Pro.....	47
Setup Dependency	48
Feature Dependency	48
Command Line Parameters.....	48
Features Available.....	48
Localized Setups	48
Transforms	48
Uninstall.....	48
Deep Learning Libraries for ArcGIS Pro	49
Setup Dependency	49
Feature Dependency	49
Command Line Parameters.....	49
Features Available.....	49
Localized Setups	49
Transforms	49
Uninstall.....	49
ArcGIS Pro Coordinate Systems Data.....	49
Setup Dependency	49
Feature Dependency	49
Properties	49
Features Available.....	50
Localized Setups	51
Uninstall.....	51
ArcGIS License Manager 2022.1.....	51
Setup Dependency	52
Feature Dependency	52
Command Line Parameters.....	52
Features Available.....	53
Localized Setups	53
Transforms	53
Uninstall.....	53
ArcGIS Server 11.0	53
Setup Dependency	53

Contents	Page
Feature Dependency	54
Command Line Parameters	54
ArcGIS Server 11.0 Account.....	56
Server Configuration File	56
Features Available	56
Existing ArcGIS Server Users.....	57
Localized Setups	57
Transforms.....	58
Uninstall.....	58
ArcGIS Server 11.0 Language Packs	58
Setup Dependency	58
Feature Dependency	58
Command Line Parameters	58
Features Available	58
Transform	58
Uninstall.....	58
Portal for ArcGIS 11.0	59
Setup Dependency	59
Feature Dependency	59
Command Line Parameters.....	59
Features Available	61
Localized Setups	61
Transforms.....	61
Uninstall.....	61
Portal for ArcGIS 11.0 Help Language Pack.....	61
Setup Dependency	61
Feature Dependency	62
Command Line Parameters.....	62
Features Available	62
Transforms.....	62
Uninstall.....	62
Portal for ArcGIS 11.0 Web Styles.....	62
Setup Dependency	62
Feature Dependency	62
Command Line Parameters.....	63
Features Available	63
Localized Setups	63
Transform	63
Uninstall.....	63
ArcGIS Data Store 11.0	63
Setup Dependency	63

Contents	Page
Feature Dependency	63
Command Line Parameters.....	63
Features Available.....	65
Creating Data Store.....	65
Localized Setups	65
Transforms	65
Uninstall.....	66
ArcGIS Data Store 11.0 Help Language Pack.....	66
Setup Dependency.....	66
Feature Dependency	66
Command Line Parameters.....	66
Features Available.....	66
Transforms	66
Uninstall.....	67
ArcGIS Web Adaptor (IIS) 11.0	67
Setup Dependency.....	67
Feature Dependency	72
Product Conflict	72
Command Line Parameters.....	72
Installing Multiple Instances.....	72
Features Available.....	73
Upgrade.....	73
Localized Setups	73
Transforms	73
Uninstall.....	73
ArcGIS Web Adaptor (Java Platform) 11.0	84
Setup Dependency.....	84
Feature Dependency	84
Product Conflict	85
Command Line Parameters.....	85
Features Available.....	85
Upgrade.....	85
Localized Setups	85
Transforms	85
Uninstall.....	86
ArcGIS Mission Server 11.0	89
Setup Dependency.....	89
Feature Dependency	89
Command Line Parameters.....	89
Features Available.....	91
Localized Setups	91

Contents	Page
Transforms.....	91
Uninstall.....	91
ArcGIS Mission Server 11.0 Help Language Pack.....	91
Setup Dependency	91
Feature Dependency	91
Command Line Parameters.....	91
Features Available	92
Transforms.....	92
Uninstall.....	92
ArcGIS Notebook Server 11.0.....	92
Setup Dependency	92
Feature Dependency	93
Command Line Parameters.....	93
Features Available	94
Localized Setups	94
Transforms.....	94
Uninstall.....	95
ArcGIS Notebook Server 11.0 Help Language Pack	95
Setup Dependency	95
Feature Dependency	95
Command Line Parameters.....	95
Features Available	96
Transforms.....	96
Uninstall.....	96
ArcGIS Notebook Server Samples Data	96
Setup Dependency	96
Feature Dependency	96
Command Line Parameters.....	96
Features Available	96
Localized Setups	96
Transforms.....	96
Uninstall.....	96
GeoEnrichment Server	96
Setup Dependency	96
Feature Dependency	96
Command Line Parameters.....	97
Features Available	98
Localized Setups	98
Transforms.....	98
Uninstall.....	98
ArcGIS Enterprise Cloud Builder 11.0 for AWS	98

Contents	Page
Setup Dependency	98
Feature Dependency	98
Command Line Parameters.....	98
Features Available.....	99
Localized Setups	99
Transforms	99
Uninstall.....	99
ArcGIS Enterprise SDK	99
Setup Dependency.....	99
Feature Dependency	99
Command Line Parameters.....	99
Features Available.....	100
Localized Setups	100
Transforms	100
Uninstall.....	100
Deep Learning Libraries for ArcGIS Server 11.0	100
Setup Dependency.....	100
Feature Dependency	100
Command Line Parameters.....	100
Features Available.....	101
Localized Setups	101
Transforms	101
Uninstall.....	101
ArcGIS Data Interoperability 11.0 for Server	101
Setup Dependency.....	101
Feature Dependency	101
Command Line Parameters.....	101
Features Available.....	101
Localized Setups	101
Transforms	101
Uninstall.....	102
ArcGIS Coordinate Systems Data (11.0).....	102
Setup Dependency.....	102
Feature Dependency	102
Command Line Parameters.....	102
Features Available.....	102
Localized Setups	103
Transforms	103
Uninstall.....	103
ArcGIS Earth	103
Setup Dependency.....	103

Contents	Page
Feature Dependency	103
Properties	104
Features Available	105
Localized Setups	105
Transforms.....	105
Uninstall.....	106
Summary.....	106

ArcGIS Pro 3.0.3, ArcGIS Enterprise 11.0, and ArcGIS Earth 1.17 Enterprise Deployment

Introduction The ability to distribute software to several users or computers from a centralized location has become a requirement for many administrators. In addition, many companies would like to lock down a user's environment and remove the ability for a user to locally install or update existing software.

To solve these challenges, an administrator can use an enterprise deployment tool, such as Microsoft® Group Policy, System Management Server (SMS), or System Center Configuration Manager (SCCM), to manage the setups, allocating them to users or computers based on their needs. The software, of predetermined properties, is installed without the administrator physically visiting each machine. An administrator will also use an enterprise deployment tool to control a user's environment. These tools enable the administrator to prevent users from installing unauthorized software or removing files that an installed software application still requires.

ArcGIS Enterprise setups can be deployed on Windows, Linux and Kubernetes. This paper will focus only on Windows platform. ArcGIS Enterprise 11.0 and ArcGIS Pro windows setups are developed with Microsoft® Windows® Installer technology, allowing ArcGIS software products and patches to be deployed from a central server. With enterprise deployment of ArcGIS products, geographic information system (GIS) managers or system administrators can efficiently plan for and control installations and updates. For example, these maintenance activities can be scheduled when they have the least impact on users or the network. Installations can be targeted to specific groups of users or machines. ArcGIS product version updates throughout an organization can be synchronized. Software can be installed on computers for which users do not have administrative privileges.

ArcGIS Enterprise and ArcGIS Pro setups can be installed on many machines by deploying the MSI or Setup.exe file directly. Any enterprise deployment tool that supports installation using an MSI file can be used to deploy ArcGIS Enterprise and ArcGIS Pro setups. This paper documents the enterprise deployment of ArcGIS Enterprise and ArcGIS Pro setups using the Active Directory® Group Policy and SCCM. The examples consider enterprise deployment in a secure lockdown environment as well as by users with administrative control on their machines.

Enterprise Deployment Using Active Directory— Group Policy or SCCM

The following ArcGIS Enterprise and ArcGIS Pro setups are supported for standard Windows Installer deployment in both a lockdown environment (where the user installing does not have administrative privileges) and an environment where the user installing does have administrative privileges. **Note:** If installing in a lockdown environment, Group Policy must be set to Always install with elevated privileges for the Windows Installer.

- ArcGIS Pro
- ArcGIS Pro Licensing Service
- ArcGIS Pro Language Packs
- ArcGIS Pro Help
- ArcGIS Data Interoperability for Pro
- Deep Learning Libraries for ArcGIS Pro
- ArcGIS Pro Coordinate Systems Data
- ArcGIS License Manager 2022.1
- ArcGIS Server 11.0
- ArcGIS Server 11.0 Language Packs
- Portal for ArcGIS for ArcGIS 11.0
- Portal for ArcGIS for ArcGIS 11.0 Help Language Pack
- Portal for ArcGIS for ArcGIS 11.0 Web Styles
- ArcGIS Data Store 11.0
- ArcGIS Data Store 11.0 Help Language Pack
- ArcGIS Web Adaptor (IIS) 11.0
- ArcGIS Web Adaptor (Java Platform) 11.0
- ArcGIS Mission Server 11.0
- ArcGIS Mission Server 11.0 Help Language Pack
- ArcGIS Notebook Server 11.0
- ArcGIS Notebook Server 11.0 Help Language Pack
- ArcGIS Notebook Server Samples Data
- GeoEnrichment Server
- ArcGIS Enterprise Cloud Builder 11.0 for AWS
- ArcGIS Enterprise SDK
- Deep Learning Libraries for ArcGIS Server 11.0
- ArcGIS Data Interoperability 11.0 for Server
- ArcGIS Coordinate Systems Data
- ArcGIS Earth

Enterprise Deployment Using Chef cookbooks for ArcGIS

Chef is an open-source IT automation framework you can use to automate the creation and maintenance of IT infrastructure. Chef cookbooks are the scripting language of Chef. They provide a repeatable and flexible mechanism to deploy software and hardware.

Esri provides Chef cookbooks to automate ArcGIS Enterprise installation and configuration. You can use them to install ArcGIS Enterprise software components, including other ArcGIS Server sites, and configure them to work with each other. When you run an ArcGIS cookbook, provide configuration information that meets your specific requirements.

ArcGIS cookbooks can help you quickly recover your ArcGIS Enterprise deployment or set up an identical deployment. This doc will focus only on group policy and SCCM. More details on deploying with Chef are available at [Chef Cookbooks for ArcGIS](#).

Enterprise Deployment Using PowerShell DSC for ArcGIS

Esri offers tools to automate your ArcGIS Enterprise deployment using Microsoft PowerShell Desired State Configuration (DSC). You can use the PowerShell DSC for ArcGIS module to automate the installation, uninstallation, and upgrade of an ArcGIS Enterprise deployment, as well as incremental software additions to an existing deployment using the module.

PowerShell DSC for ArcGIS contains sample JSON files to which you add your specific information and parameters before running in the PowerShell console. This doc will focus only on group policy and SCCM. More details on deploying with Chef are available at [PowerShell DSC for ArcGIS](#).

Planning Software Deployment

Before you deploy software, go through the following checklist:

- Download and extract setups.
- System requirements: Client machines should meet system requirements of the setup.
- Setup requirements: Install any setup dependencies or feature dependencies and remove any product conflicts. If the product has an installation guide, read that before deploying the setup. Version 11.0 setups can upgrade the 10.7–10.9.1 setups.
- Licensing: Decide on the software licensing model—single use, concurrent use, or named user.
- Deployment method: Decide on the deployment method—Group Policy or SCCM—and customize the setup if needed. Check the ArcGIS Resources to see if a [patch](#) has been released for it. If yes, you can apply it to the administrative image before deployment.

Download and Extract Setups

- Click the product's download link on Esri's Customer Care portal.
- Download and extract the setups.

- Make sure you have write access to your download directory location, as well as your ArcGIS installation directory location, and that no one is accessing it.
- Recommended: Use Esri® Download Manager to manage your downloads.
 - The first panel of the extraction wizard will allow you to indicate the location on your computer to which you would like the installation files extracted. When satisfied, click OK.
 - **Note:** If you choose to change the destination location when starting the .exe (either from the Launch option in Esri Download Manager or running the downloaded self-extracting .exe manually), be sure to choose a unique location to which you will move the files.
 - You will be notified when the file extraction is complete. To install the software later, uncheck the check box.

System Requirements

Every setup has system requirements that must be met before the setup can proceed with the installation. System requirements consist of supported operating systems and minimum hardware requirements.

- Supported operating systems—Check the [system requirements](#) at the ArcGIS Resources website to confirm that machines on which the software is going to be deployed have a supported operating system. The system requirements will list the minimum and maximum version of supported service packs, also. This will help in knowing what platform is supported. Some setups, like ArcGIS Web Adaptor (IIS) 11.0, can be installed on both 32-bit and 64-bit OSs, and some setups, like ArcGIS Server 11.0, can only be installed on a 64-bit OS.
- Hardware requirements—Check the latest [hardware requirements](#) at the ArcGIS Resources website. Setups do not have any built-in checks for hardware requirements.

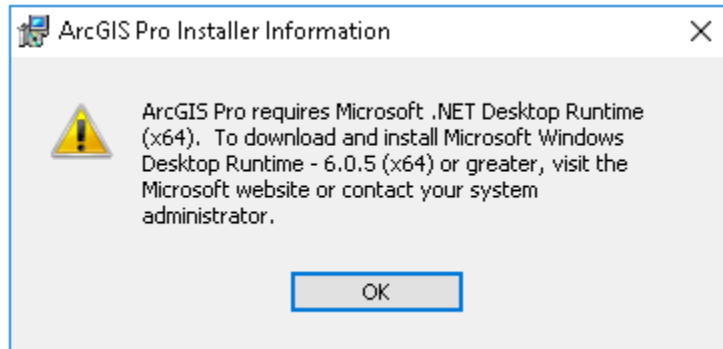
Setup Requirements

Setups check for launch conditions, feature dependencies, and product conflicts.

- Launch conditions

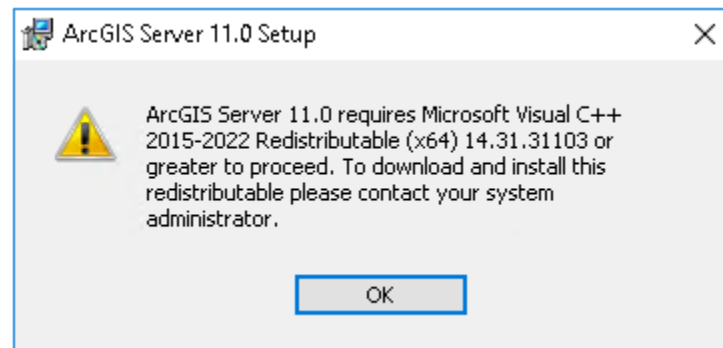
These are the dependencies that must be met for the setup to run.

- **System account:** The machine's system account must have full control of the system drive and the drive to which you will be installing.
- **Microsoft .NET Desktop Runtime :** Some setups, like ArcGIS Pro 3.0.3, have a setup dependency on Microsoft .NET Desktop Runtime 6.0.5. If the setup does not find it, the following dialog box is displayed:



Note: This dialog box is not displayed if setup is being deployed completely silently.

- **Microsoft Visual C++ 2015-2022 Redistributable:** Some setups, like ArcGIS Server 11.0, have a setup dependency on Microsoft Visual C++ 2015-2022 Redistributable (x86) and Microsoft Visual C++ 2015-2022 Redistributable (x64). If the Visual C++ 2015-2022 Redistributable is not already installed, running setup.exe will install it before setup.msi is launched. Setup.msi will not install if Microsoft Visual C++ 2015-2022 Redistributable is not already installed. If the setup does not find it, the following dialog box is displayed for ArcGIS Server 11.0:



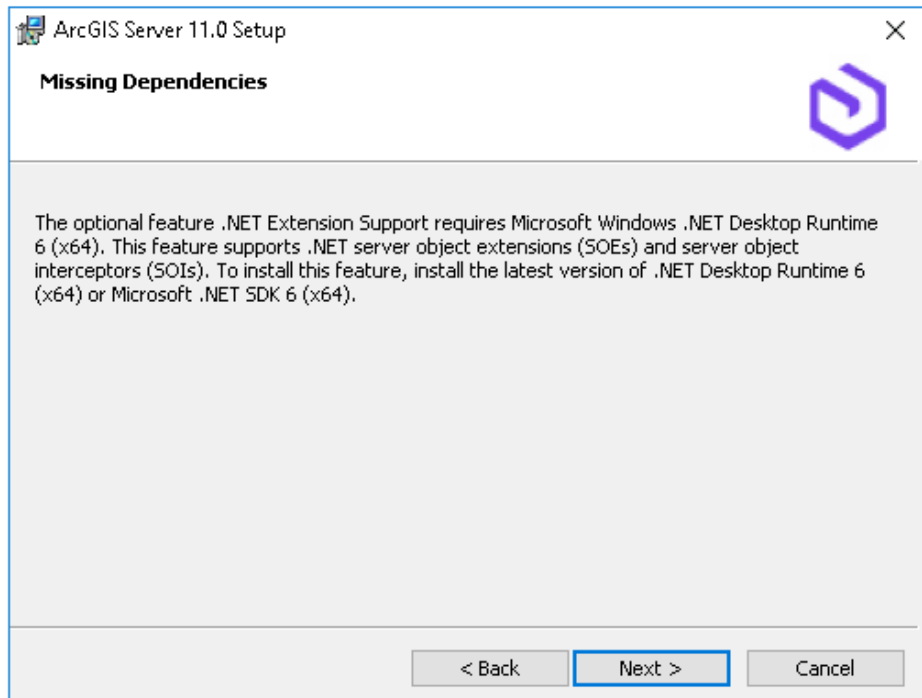
Note: This dialog box is not displayed if setup is being deployed completely silently.

- **Feature dependencies**

Setups are made of features that are defined based on the functionality they provide. Feature dependencies do not prevent a setup from being installed, unlike setup dependencies. If a prerequisite for the feature is not found on the machine, that feature will not be available for installation on the Select Features dialog box.

Unavailable features can be added later by installing the prerequisite and going to Add/Remove Programs > [Product] > Change > Modify. The feature that had been unavailable before should now be visible and marked with a red X. Select the feature for installation and follow the on-screen instructions until the installation process has been successfully completed. Uninstalling and reinstalling the software is not required.

For example, ArcGIS Server 11.0 has a DotNetSupport feature with a dependency on Microsoft .NET 6. If it is not found, the DotNetSupport feature does not show up on the Select Features dialog box.



Note: This dialog box is not displayed if setup is being deployed completely silently.

If ArcGIS Server 11.0 has already been installed and you need to install the DotNetSupport feature, install Microsoft .NET 6, then go to Add/Remove programs, click ArcGIS Server 11.0, then click the Uninstall/Change option. This launches the Application Maintenance dialog box. Select Modify and click Next to go to the Select Features dialog box. The DotNetSupport feature will now be available for installation.

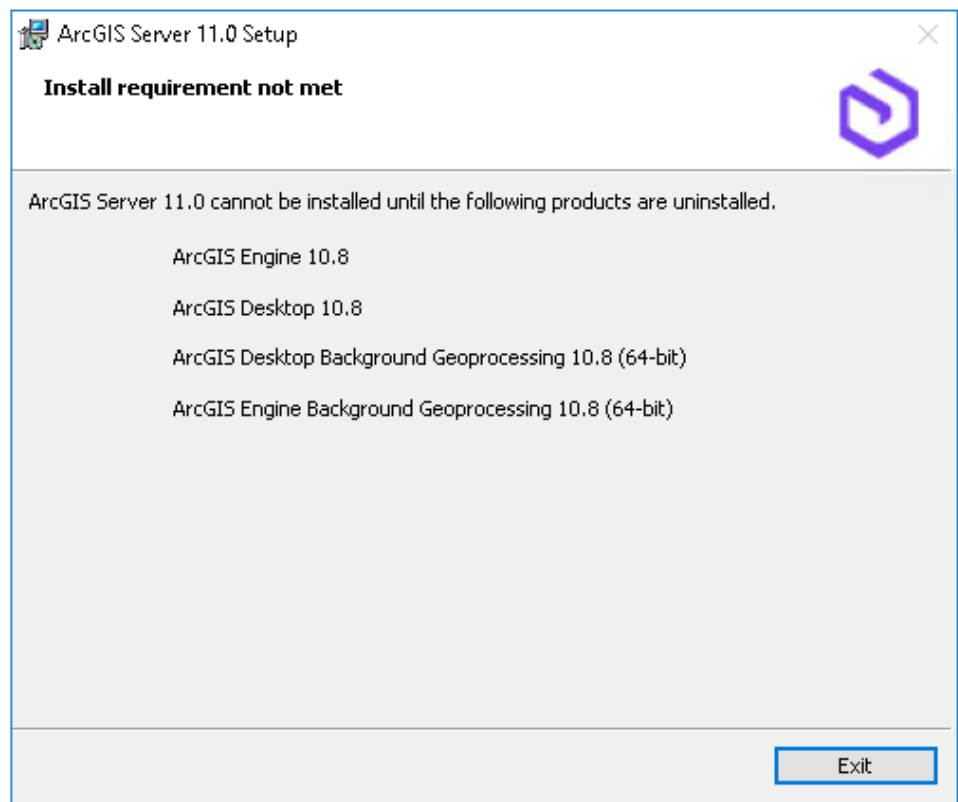
This document lists all setup and feature dependencies for the [products](#) that are supported for software deployment. Refer to the individual [installation guides](#) for more detail.

■ Product conflicts

ArcGIS Pro can be installed on the same machine as other ArcGIS Desktop releases or on a machine without any Esri products. Esri strongly recommends that all sample and third-party extensions or plug-ins be uninstalled before installing a newer version of ArcGIS product. Contact the distributor or manufacturer to confirm that they are supported with ArcGIS Enterprise 11.0 products. If they are, you can install them again after installing ArcGIS Enterprise 11.0 products.

ArcGIS Enterprise 11.0 is considered a major release. Some of the significant changes in this release include decreased compatibility between ArcGIS Enterprise and ArcGIS Desktop. Starting with Enterprise 11.0 release, ArcMap-based workflows are no longer supported in ArcGIS Enterprise. The software now includes the ArcGIS Pro-based runtime and no longer includes the ArcMap-based service runtime.

All ArcGIS products previous to version 10.7 must be uninstalled before installing any ArcGIS Enterprise 11.0 product. This includes ArcGIS Desktop, ArcReader, and ArcGIS Engine clients, as well as ArcObjects SDK. The setup will terminate and display a dialog box if conflicting versions of these products exist on your machine. If so, you must uninstall each of them and then run the setup again to proceed with your installation.



Note: This dialog box is not displayed if setup is being deployed completely silently.

Upgrading to 11.0 ArcGIS Enterprise 11.0 setups have been authored as major upgrades to 10.7–10.9.1 setups. They are designed to detect and upgrade an existing installation of 10.7–10.9.1 setups on the target system. If, for example, you already have ArcGIS Server 10.9 installed, the setup will automatically upgrade to ArcGIS Server 11.0. Additionally, you can install ArcGIS Server 11.0 without having a previous version of ArcGIS Server installed on your machine. The same logic applies to other ArcGIS Enterprise 11.0 setups.

The installation location parent folder is retained, although the upgrade is installed in a <Product>\10.8 folder or <Product>\10.9 folder. After installation, any customizations, add-ons, or third-party applications installed for 10.7–10.9.1 must be reapplied to 11.0. The settings for the installation location, license manager (for concurrent use), or authorization information (for single use) are retained in the upgrade. If you wish to change the installation location, you will need to manually uninstall the 10.7–10.9.1 products before installing the 11.0 setups in the new location.

When upgrading by individual software components, ensure that the version of the ArcGIS Enterprise portal matches the versions of any GeoAnalytics Server sites, Raster Analytics sites, and Image Hosting sites. To learn about the exceptions that support a federated server site at a prior version to the portal, see [Federate an ArcGIS Server with your portal](#).

Upgrading a Localized 10.7–10.9.1 Setup

Running setup.exe for a localized 11.0 setup will upgrade both the main product installation and the language pack installation.

If you have any localized 10.7–10.9.1 products installed and run the upgrade for the English 11.0 setup using setup.msi, only the core product installation will be upgraded. The 10.7–10.9.1 language pack will be retained in the original installation location but will not be functional.

When the 11.0 language pack is available, run its setup to upgrade the 10.7–10.9.1 language pack to 11.0. If the core 11.0 product exists, running setup.exe for a localized installation will display the maintenance dialog box for the core product. Cancel out of this setup to continue with the language-pack-only installation. Installation using the language pack MSI file will not bring up the maintenance dialog box of the core product.

Licensing

You must also uninstall your license manager and install the 2022.1 License manager. ArcGIS License Manager 2022.1.

Licensing for ArcGIS Pro 3.0.3 An administrator of an organization that has been provisioned for ArcGIS Pro can use three licensing options to manage licenses for members. You must authorize licenses for members before members can run ArcGIS Pro. The three options for licensing with ArcGIS Pro are as follows:

- **Named user license**—A named user license is the default license option for ArcGIS Pro. Named user licenses are authorized and managed by an administrator through an organization's ArcGIS Online website or a local instance of Portal for ArcGIS. An administrator assigns a software level (Basic, Standard, or Advanced) and extensions in ArcGIS Online or Portal for ArcGIS to individual users. When you start ArcGIS Pro and sign in with a named user license, the app runs with the level and extensions set by the administrator. If an administrator has not assigned a license to you, ArcGIS Pro will not run when you attempt to sign in.

If the license is through ArcGIS Online (the default option), licensing software is not required because ArcGIS Online is a cloud-based service provided by Esri. If the license is through Portal for ArcGIS, installation of Portal for ArcGIS 10.5 or later is recommended, and ArcGIS License Manager 2022.1 or later is required.

The advantage of a named user license is that the assigned level and extensions are available to you at all times. With a named user license, a user can run ArcGIS Pro on up to three machines simultaneously.

- **Concurrent use license**—Concurrent use licenses are authorized and managed using the ArcGIS License Manager. The ArcGIS License Manager is installed on a single machine on the network and is provisioned with core and extension licenses. With a concurrent use license, your machine points to a License Manager Server for license authorization from a shared pool of licenses, and you can choose your license level and extensions as long as the desired license is available. This allows more users to have ArcGIS Pro installed on their machine than the total number of licenses. Simultaneous use of ArcGIS Pro is limited by the total number of available licenses in the License Manager Server.

A named user license is the default license type, so before concurrent use licenses are stored and managed in the License Manager, an administrator must convert named user licenses to concurrent use licenses in [My Esri](#). After the ArcGIS License Manager is installed and provisioned with licenses by an administrator, members can start ArcGIS Pro and check out any available license on the Licensing dialog box.

- **Single use license**—Single use licenses are managed within [My Esri](#) and authorized on each machine. Within [My Esri](#), a single use license contains an authorization number for the core license level (e.g., Advanced, Standard, or Basic) and one authorization number for every extension. Use the authorization number to authorize a core license level and optional extension licenses. Single use licenses can only be accessed on the authorized machine. Once authorized, anyone with access to that machine can use ArcGIS Pro on or off the network.

The named user license is the default license type, so before a single use license can be used to authorize ArcGIS Pro, you must convert at least one named user license to a single use license in [My Esri](#). Create a provisioning file (.prvc) to avoid entering the authorization numbers manually in the Software Authorization Wizard and download the file.

The following properties can be used to configure licensing options for ArcGIS Pro installation:

Parameter	Value	Case Sensitive	Required	Description
ESRI_LICENSE_HOST	@<License Manager>	No	Yes for concurrent use	Machine name of license manager
SOFTWARE_CLASS	Viewer	Yes	Yes (one of these values)	Installs ArcGIS Pro as Basic level
	Editor			Installs ArcGIS Pro as Standard level
	Professional			Installs ArcGIS Pro as Advanced level
AUTHORIZATION_TYPE	SINGLE_USE	Yes	Yes (one of these values)	Installs ArcGIS Pro as a single use seat
	CONCURRENT_USE	Yes		Installs ArcGIS Pro as a concurrent use seat
	NAMED_USER	Yes		Installs ArcGIS Pro with a Named User license.

LOCK_AUTH_SETTINGS	True		No	If the authorization type is defined at the command line, then the registry string LOCK_AUTH_SETTINGS is set to True under HKEY_LOCAL_MACHINE\SOFTWARE\Esri\ArcGISPro\Licensing. When LOCK_AUTH_SETTINGS is True, the licensing settings in the registry apply to all ArcGIS Pro users on that machine--an individual user cannot make changes. To allow ArcGIS Pro users on the machine to define their own authorization settings through the ArcGIS Pro application, set LOCK_AUTH_SETTINGS to False.
ARCGIS_CONNECTION		No	No	Specifies whether a connection to .arcgis.com should be available from the Portal page.
	TRUE			To include the connection, set this property to "TRUE".
	FALSE			If set to "FALSE", the connection will not appear on the Portal page.

Portal_List	<portalURL1>; <portalURL2>	No	No	To add one or more portal connections to the Portal page, set Portal_List="<portalURL1>;<portalURL2>". Use semicolons to separate portal URLs. If "ArcGIS_Connection" is set to "False", this property cannot contain "arcgis.com". If your portal supports HTTPS, it is strongly recommended that the Portal_List URL(s) uses HTTPS.
License_URL	<portalURL>	No	No	To specify the URL of the Named User licensing portal, set License_URL="<portalURL>". If "ArcGIS_Connection" is set to "False", "License_URL" cannot contain "arcgis.com". To use this property, "AUTHORIZATION_TYPE" must be set to "NAMED_USER".

If all three properties (ESRI_LICENSE_HOST, SOFTWARE_CLASS, and AUTHORIZATION_TYPE) are used for per machine install, it creates licensing registry keys in HKLM\Software\ESRI\ArcGISPro\Licensing hive. For per user install, licensing registry keys are created in HKCU\Software\ESRI\ArcGISPro\Licensing hive.

■ **Named user license command line**

Named user licensing for per machine installs

```
msiexec.exe /i <Path to msi> /qb ALLUSERS=1 SOFTWARE_CLASS=Professional
AUTHORIZATION_TYPE: NAMED_USER License_URL="<portalURL>"
```

Named user licensing for per user installs

```
msiexec.exe /i <Path to msi> /qb ALLUSERS=2 MSIINSTALLPERUSER=1  
SOFTWARE_CLASS=Professional AUTHORIZATION_TYPE: NAMED_USER  
License_URL="<portalURL>"
```

■ Concurrent use license command line

Concurrent use licensing for per machine installs.

```
msiexec.exe /i <Path to msi> /qb ALLUSERS=1 ESRI_LICENSE_HOST=yourlicenseserver  
SOFTWARE_CLASS=Professional AUTHORIZATION_TYPE: CONCURRENT_USE
```

Concurrent use licensing for per user installs.

```
msiexec.exe /i <Path to msi> /qb ALLUSERS=2 MSIINSTALLPERUSER=1  
ESRI_LICENSE_HOST=yourlicenseserver SOFTWARE_CLASS=Professional  
AUTHORIZATION_TYPE: CONCURRENT_USE
```

Note: The ArcGIS Pro Licensing Service setup is required for a per user installation of ArcGIS Pro to work offline with a concurrent use license.

■ Single use license command line

Single use licensing for per machine installs

Install setup

```
msiexec.exe /i <Path to msi> /qb ALLUSERS=1 SOFTWARE_CLASS=Professional  
AUTHORIZATION_TYPE: SINGLE_USE
```

Authorize product

```
%ProgramFiles%\ArcGIS\Pro\bin\SoftwareAuthorizationPro.exe"/LIF <Location of prvc> /s /Ver  
11.0
```

Single use licensing for per user installs

Install setup

```
msiexec.exe /i <Path to msi> /qb ALLUSERS=2 MSIINSTALLPERUSER=1  
SOFTWARE_CLASS=Professional AUTHORIZATION_TYPE: SINGLE_USE
```

Install ArcGIS Pro Licensing Service setup

```
msiexec.exe /i <Path to msi> /qb
```

Authorize product

```
%ProgramFiles%\ArcGIS\Pro\bin\SoftwareAuthorizationPro.exe"/LIF <Location of prvc> /s /Ver  
11.0
```

Installing ArcGIS Pro Licensing Service

- The ArcGIS Pro Licensing Service setup is installed with ArcGIS Pro. It is required for a per user installation of ArcGIS Pro to work offline with a concurrent use license or to utilize single use licensing. The ArcGIS Pro Licensing Service setup installs the 64-bit Flex Net service. The Flex Net service is automatically installed by a per machine instance of ArcGIS Pro; the Pro Licensing setup is only necessary to support per user installations.

- To install the ArcGIS Pro Licensing Service, run ProLS.msi in "<ArcGIS Pro installation directory>\Resources\ArcGIS Pro Licensing Service" and follow the prompts. This requires administrative privileges.

More information regarding ArcGIS Pro licensing is available at pro.arcgis.com/en/pro-app/get-started/view-software-licenses.htm.

Enterprise Deployment Using Active Directory and Group Policy

Introduction Using Group Policy as an enterprise deployment tool requires an Active Directory environment. The Active Directory environment consists of a domain controller with a server operating system, like Windows Server 2012, and Windows Server 2012 R2, Windows Server 2016, Windows Server 2016, Windows Server 2019, and Windows Server 2022 to manage the domain and desktop clients like Windows 8, Windows 10, and Windows 11. Group Policy includes a software installation extension that enables the domain controller to manage setups that can be assigned to users or computers or can be published to users. These setups must be created with Microsoft Windows Installer technology. The deployment package can be customized using a transform (.mst) file. The transform file can be used to specify the software seat, installation directory, and license manager as required. Once a package is deployed, either assigned or published, it is displayed in the Add/Remove Programs dialog box. An authorized user launches the setup from Add New Programs. Packages can be set to Always install with elevated privileges, enabling the Windows Installer to run as the local machine's system account. For more information on Group Policy software deployment, see www.microsoft.com.

The domain controller should be used to uninstall ArcGIS. When the software is deployed per user and many different users install it, using the Add/Remove Programs dialog box to uninstall will remove all the files and registry keys for this product, but the software shortcuts will remain on the machine for other users. This may confuse users when their shortcuts fail to work because the files have been uninstalled. The Add/Remove Programs dialog box for these users will also state that the product is still installed on the machine. To avoid these issues, uninstall using the Group Policy's Remove option. When the software is deployed per machine, the Control Panel's Add/Remove Programs dialog box does not enable you to remove the software unless you have administrative privileges; using Group Policy to manage the uninstall of the software will uninstall with elevated privileges for all users.

If deploying the software in a lockdown environment, you will need to modify Group Policy so that the Windows Installer is set to Always install with elevated privileges (both user and computer configuration).

Deploying software to client machines is a multistep process involving first creating the software distribution share followed by creating a Group Policy Object (GPO), editing the GPO, enforcing the GPO, and finally initiating software installation on the client machine.

Create Software Distribution Share

Before software can be deployed, it must be copied to a network share for easy access. It is recommended that an administrative installation be done first and that the network share be used to deploy to client machines. This method supports the Group Policy method of redeploying the setup package after a patch has been applied.

You can perform an administrative installation on the server using the standard `msiexec` command line parameters:

```
msiexec /a <setup location>\setup.msi /qb TARGETDIR=<installation directory>/11.0/<product name>
```

It is important to include the `TARGETDIR` property; otherwise, the installation directory will default to the drive with the emptiest disk space including mapped drives. If the `/qb` parameter is not included, the setup dialog will be launched, and that can be used to finish the administrative installation. Also, remember to include the version and product name in the `TARGETDIR`. This helps prevent overwriting the administrative image by mistake.

For patch deployment, you will patch the administrative installation on the server, then redeploy the package to your clients. Do not delete this administrative installation; it is required for modifying installation features and additional patching. See the [Deploying Patches Using Group Policy](#) section for more information.

Some setups have files that are located in a directory structure that can potentially exceed the Windows 256-character limit. If the Windows character limit is exceeded, you will receive installation error 1335. There are two workarounds for this issue: you can either perform an administrative installation to a directory structure that does not exceed the above limits, or you can perform an administrative installation at the command line with the additional parameter of `SHORTFILENAMES=TRUE`.

```
msiexec /a <setup location>\setup.msi /qb TARGETDIR= <installation directory>/11.0/<product name> SHORTFILENAMES=TRUE
```

After the administrative or shortfile administrative installation is done, share the folder and modify security permissions so that client machines can access the network share.

Create New GPO

1. Start Group Policy Management Console (GPMC). GPMC consists of a Microsoft Management Console (MMC) snap-in and a set of programmable interfaces for managing Group Policy. GPMC is included with Remote Server Administration Tools (RSAT). Installing RSAT does not automatically install GPMC. To install GPMC after you install RSAT, go to Server Manager and add it as a feature:

```
Start > Run > gpmc.msc
```

2. Browse to your domain and your organizational unit (OU), then right-click and click Create a GPO in this domain and Link it here.

Organizational units are Active Directory containers into which you can place users, groups, computers, and other organizational units. An organizational unit is the smallest scope or unit to which you can assign Group Policy settings or delegate administrative authority.

3. Provide a value for the name.

Edit GPO To launch Group Policy Management Editor, right-click GPO and click Edit.

The Group Policy snap-in contains the following major branches:

- **Computer Configuration:** Administrators can use Computer Configuration to set policies that are applied to a computer regardless of who logs on. Computer Configuration typically contains sub items for software settings, Windows settings, and administrative templates.

For most products except for like ArcGIS Pro, setups assign the application to a computer. ArcGIS Pro can be assigned to either a computer or user.

In this example, GPO has been named ArcGIS Server 11.0.

1. Go to ArcGIS Server 11.0 > Computer Configuration > Policies > Software Settings > Software Installation. Then right-click and click New Package.
2. Browse to the folder that contains the MSI and select it. Always use a UNC path to browse to the MSI file. This share should have security rights configured so that the client machines can also access it.
3. Choose the Advanced option and click OK. The Publish option is not available because you will assign to Computer.
4. After the GPO Properties dialog box appears, go to the Deployment tab, and check the Uninstall this application when it falls out of the scope of management check box. This option is needed during uninstallation.
5. After the ArcGIS Server 11.0 package shows up in the right pane (this takes a minute or two), close Group Policy Management Editor.

- **User Configuration:** Administrators can use User Configuration to set policies that apply to users regardless of which computer they log on to. User Configuration typically contains sub items for software settings, Windows settings, and administrative templates.

It is not recommended that you assign an ArcGIS setup package except the ArcGIS Pro setups to a user. Assigning an ArcGIS setup to a user will not successfully add a shortcut to your desktop, and the setup will not auto install by file extension activation.

In this example, GPO has been named ArcGIS Pro.

1. Go to ArcGIS Pro > User Configuration > Policies > Software Settings > Software Installation. Then right-click and click New Package.
2. Browse to the folder that contains the MSI and select it. Always use a UNC path to browse to the MSI file. This share should have security rights configured so that the client machines can also access it.
3. Choose the Advanced option and click OK.
4. After the GPO Properties dialog box appears, go to the Deployment tab, and unselect the Auto install option under Deployment options. Select the Assigned option under Deployment Type.
5. Check the Uninstall this application when it falls out of the scope of management check box. This option is needed during uninstallation.
 - a. Select Install this application at logon to initiate group policy software installation when a user logs on.
 - b. To prevent users from starting installation on their own, select Do not display this package in the Add/Remove Programs control panel.
 - c. To prevent the user from seeing any dialog boxes during installation, select the Basic option under the Installation interface user options.
6. Click OK and then close Group Policy Management Editor.

ArcGIS Pro setups can be assigned to a user or computer. Use the following criteria to decide what option to choose:

- If all users on the computer need to use ArcGIS Pro, then assign to computer.
- If only a particular user needs it, then assign to user.

Enforce GPO GPO will now show up in the OU folder. Right-click GPO and click Enforced.

Start Software Installation For computer assignment, reboot the client machine to install the software. Software installation happens before any user is logged in. This is foreground policy processing. For software installation Group Policy, foreground processing must be running synchronously.

Synchronous processes can be described as a series of processes where one process must finish running before the next one begins. It can sometimes take two reboots for a package to be deployed. Confirm that the software has been installed by opening Add/Remove Programs.

On Windows Vista and higher operating systems, a generic Please wait message is displayed while the application is being installed. To change this, enable Verbose vs. normal status messages policy Group Policy and then link and enforce the GPO to

the relevant OU. After that, the name of the application that is being deployed is shown during the installation process.

If the Install this application at logon option was selected for user assignment, then log off and log on to the client machine to start the installation. Just like computer assignment, the software installation happens before user login. For user assignment, the application is also available to be installed in Add or Remove Programs > Install a program from the network.

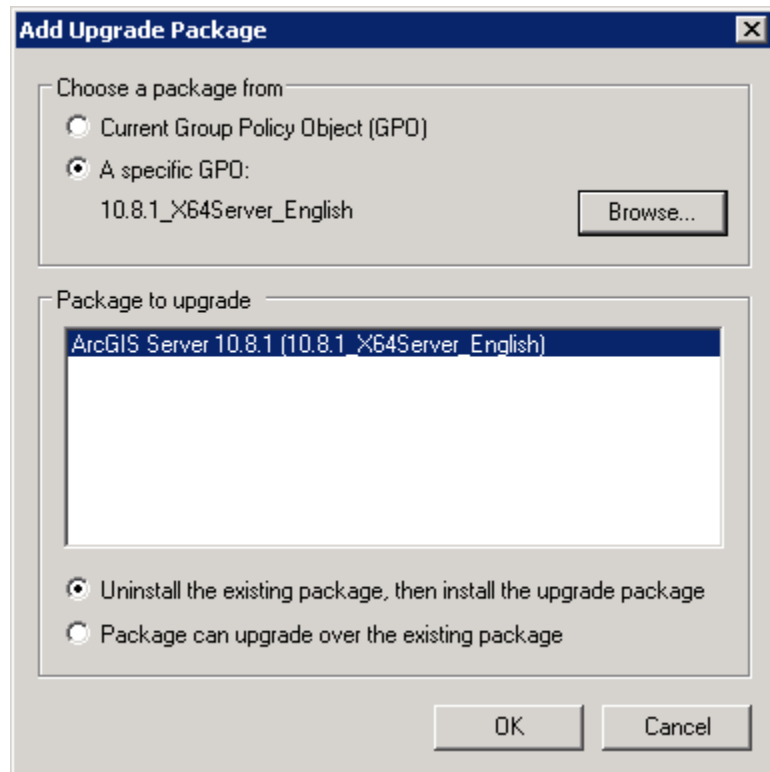
Upgrading to 11.0

If you created a new GPO without any upgrade information for the 11.0 setups, you have to use that to uninstall. If you are upgrading from 10.7–10.9.1 to 11.0, there are several options depending on how GPOs are grouped together and implemented in your organizational unit and domain. First is to create a new GPO without an upgrade specification. Second is to create a new 11.0 GPO and specify the 10.7–10.9.1 GPO and 10.7–10.9.1 package. Third is to modify the existing 10.7–10.9.1 GPO and add the 11.0 package in it.

New 11.0 GPO with no upgrade information: The first option is what was just done in the steps mentioned above for [Create New GPO](#) and [Edit GPO](#). There is no requirement to add the upgrade information because the default behavior of the 11.0 MSI setup is to uninstall the 10.7–10.9.1 setup and then install the 11.0 setup in one seamless step.

New 11.0 upgrade GPO: The second option is to create a new GPO for 11.0 and add the 11.0 package to it.

- For example, create a new GPO named ArcGIS Server 11.0 using the steps mentioned above for [Create New GPO](#) and new package in it for ArcGIS Server 11.0 using [Edit GPO](#).
- In the Group Policy Management Editor, right-click the ArcGIS Server 11.0 package and click Properties. After the GPO Properties dialog box appears, go to the Upgrade tab, and click the Add button.
- In the Add Upgrade Package dialog box, click the A specific GPO button and then click the Browse button.
- For example, if you have an existing GPO named ArcGIS Server 10.8.1, select the GPO and click OK.
- In the Add Upgrade Package dialog box, you can choose either the Uninstall the existing package, then install the upgrade package option or the Package can upgrade over the existing package option. Click OK and close the Group Policy Management Editor.



Modify existing 10.7–10.9.1 GPO: The third option is to modify the existing 10.7–10.9.1 GPO.

- For example, if you have an existing GPO named 10.9_Server and there is a package in it for ArcGIS Server 10.9, open the GPO in the GPO editor and create a new package and select the ArcGIS Server 11.0 MSI file. This will create a package named ArcGIS Server 11.0 and automatically add the option to upgrade the ArcGIS Server 10.9 package.
- If the upgrade option does not show up, right-click the package and select Properties. Go to the Upgrade tab and click the Add button. Click the Current Group Policy button and then browse to the ArcGIS Server 10.9 package.

Customize Group Policy Installation

Group Policy software distribution can only deploy an MSI file. It cannot accept any command line parameters. The only way to customize the setup installation is to generate a Microsoft transform (.mst) file and link it to the MSI file while creating the software installation GPO.

An MST file can be used to install a setup with predefined properties. The MSI file and the MST file are then used to deploy the setup. The MST file customizations can include the installation location, license manager, installation type, features to install, software product type, and so forth.

Transforms for setup.msi can be created using Orca, a free tool available with the Microsoft Installer software developer kit (SDK). Install the latest version of Microsoft SDK and then launch C:\Program Files\Microsoft SDKs\Windows\v7.0A\Bin\Orca.Msi. The actual path will vary based on the version of the SDK. This will install Orca. Other tools are available that use a wizard to create transform files, for example, Wise for Windows Installer and InstallShield Admin Studio.

You will need to use a transform file to set the installation directory to a location other than the default and to specify your software type.

Creating Transforms

To create transforms, open setup.msi in Orca. On the main toolbar, navigate to Transform > New Transform. Now start modifying tables to customize the setup.

■ Modify properties.

Many aspects of the installation can be modified by just changing values of properties in the property table. A complete list of what properties can be modified is included in the command line table of the [products](#) section of this document. Following are some examples of how to modify properties:

■ Change the features selected for installation.

- To install a feature in a feature table, change the level to 1.
- To prevent features from being installed, change the level from 1 to any number greater than 100.

The features specified using a transform should replicate the selection of features in the Add/Remove dialog box. If you want to create a transform that adds an installation feature to an existing setup, that transform must include the features that are already installed on the machine and the feature you would like to add. If you do not include the already installed features, they will be uninstalled while the added feature and its associated features are installed.

Some setups install the Python feature, which is conditionally set to be installed in the MSI and requires an additional step. So that the Python feature is not installed, the feature table changes above must be made, and the Python rows must be deleted from the condition table.

■ Change the default installation location.

- Changing INSTALLDIR instructions is specific to every product. See the Transform section of the product in this document for more details.
- For ArcGIS Server 11.0 in the CustomAction table, locate the custom action GET_INST_LOC.
- The target column for this custom action is [INSTALLDIR]. Change this to the desired installation location, for example, C:\MyServer\.

Applying a Transform

1. Choose the Advanced option when creating a new package.
2. After the GPO properties dialog box appears, select the Modifications tab and add the transform file.

Now, when the application is deployed, it will have all your customizations in it. Transforms can only be added to the GPO during the GPO creation process. It is not possible to add a transform to an existing software installation GPO.

Deploying Localized Setups Using Group Policy

Some Esri setups are available as localized setups, and some also come with language pack setups that localize the application. If the product being deployed has a localized setup available, you can deploy the localized version of the setup.

All localized setup data is stored in .mst files and embedded in the MSI file. To deploy the localized setup, first check what languages are available for localized setup, extract the .mst files, and then apply them on the MSI file while creating the GPO. You will need WISubStg.vbs and msidb.exe to do so. Both of these utilities are available as part of Windows Installer SDK, which can be downloaded from www.microsoft.com.

After the SDK is installed, these utilities will be in the following location (the actual path will vary based on the version of the SDK and operating system):

- C:\Program Files\Microsoft SDKs\Windows\v7.0\Samples\sysmgmt\msi\scripts\WiSubStg.vbs
- C:\Program Files\Microsoft SDKs\Windows\v7.0A\Bin\MsiDb.Exe

The deployment workflow is to create the localized setup GPO, create the language pack GPO, and then have the correct GPO link order.

Create Localized Setup GPO

When assigning to a computer, the application is installed silently, and no setup dialog boxes are displayed on the client machine. If you open the setup via Add/Remove Programs, the setup dialog boxes will be displayed in English. If you would like to have these dialog boxes shown in a localized GUI, you have to deploy the localized setup, which involves extracting the .mst file from the MSI file and then applying it during GPO creation. If you are going to uninstall the application by Group Policy, it is uninstalled silently, and users will not see the setup dialog boxes. So, create the localized setup GPO only if you will need to modify the installation manually on a client machine by going to Add/Remove Programs.

- See available transform files.

Use WISubStg.vbs to see what .mst files are embedded.

```
cscript WiSubStg.vbs [path to database][path to file][options]
```

```

Administrator: cmd 64
e:\tools>cscript /nologo WiSubStg.vbs ArcGISPro.msi
2052.mst
1058.mst
1055.mst
1053.mst
1049.mst
1046.mst
1045.mst
1042.mst
1041.mst
1040.mst
1037.mst
1036.mst
1035.mst
1034.mst
1033.mst
1031.mst
1029.mst
1028.mst
1025.mst
e:\tools>_
    
```

For example ArcGIS Pro has 17 .mst files. The following table shows the language code for each .mst file.

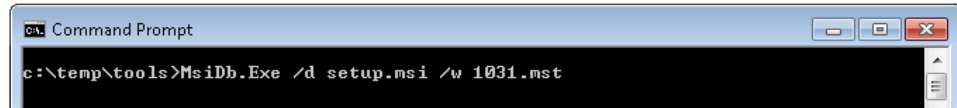
Language	Language Code
Arabic	1025
Chinese_CN	2052
French	1036
German	1031
Italian	1040
Japanese	1041
Portuguese_BR	1046
Russian	1049
Spanish	1034
Turkish	1055
Finnish	1035
Korean	1042
Hebrew	1037
Czech	1029
Swedish	1053
Polish	1045
Chinese_TW	1028
Ukrainian	1058

- Extract transform files.

Use MsiDb to extract the .mst files. This tool is used to import and export database tables and streams, merge databases, and apply transforms.

```
MsiDb.Exe /d <Path to msi> /w <Language Code>.mst
```


In the following example, the German .mst is being extracted from setup.msi, by extracting 1031.mst into the folder containing MsiDb.Exe.



■ Create GPO.

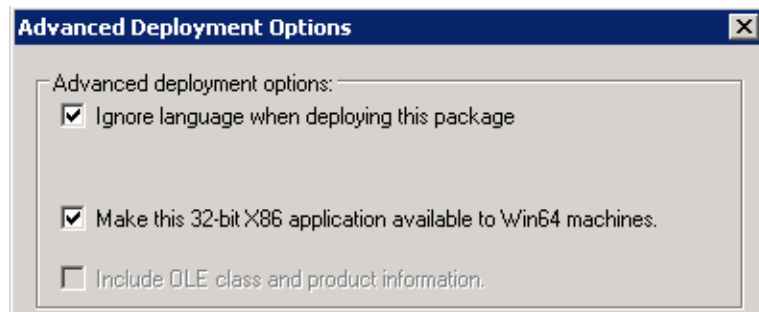
Apply transform during the GPO creation process.

- Choose the Advanced option when creating a new package.
- After the GPO properties dialog box appears, select the Modifications tab and add the transform file. Now when the application is deployed, it will deploy as a localized setup. This can be confirmed by going to Add/Remove Programs and launching the uninstallation. Setup dialog boxes will have localized text.

Create Language Pack GPO

If the application has a language pack setup, create a GPO for that too. For example, ArcGIS Server 11.0 has 10 language pack setups. If you need localized German applications, choose the German language pack MSI while creating the language pack GPO.

While creating the GPO, go to the Deployment tab and click Advanced. Check the option Ignore language when deploying this package.



GPO Link Order

Link this GPO to the same OU that has localized setup GPO. Now this OU has two GPOs, and they need to be ordered correctly. If a language pack GPO is installed before the localized setup GPO, it will fail, because language packs have a setup dependency on the ArcGIS Server 11.0 setup. The GPO with the lowest link order is processed last. The correct link order will look like the following:

Link Order	GPO	Enforced	Link Enabled	GPO Status	WMI Filter
1	11.0_X64Server_Supplement_French	No	Yes	Enabled	None
2	11.0_X64Server_English	No	Yes	Enabled	None

After both these GPOs are processed on the client machine, you will have a localized setup and localized application.

Deploying Patches and QFEs Using Group Policy

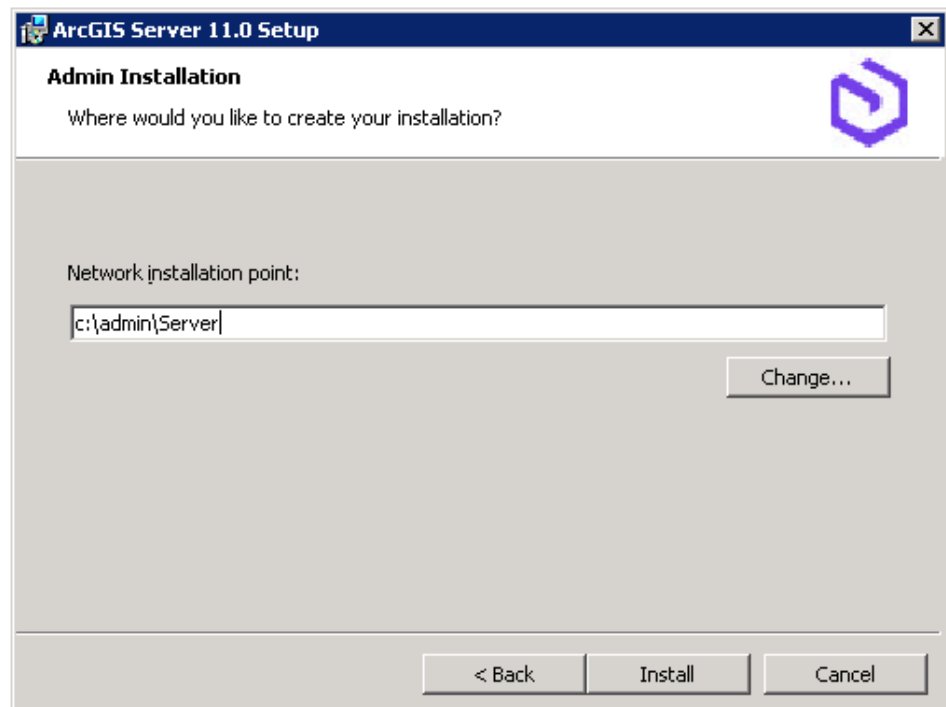
All ArcGIS Enterprise 11.0 patches and QFEs are available as individual Windows Installer Patch (.msp) files that upgrade an existing installation. An .msp file cannot be directly deployed as a package using Group Policy software deployment. To deploy an .msp file, follow these steps:

- Apply the .msp file to the administrative installation using the following command line:

```
msiexec /a <location of ArcGIS administrative installation>\setup.msi /p <location of patch>\<patch name>.msp
```

For example: `msiexec /a c:\admins\11.0\Server\setup.msi /p c:\admins\Server\Serverpatch.msp`

The image below shows the setup dialog box that is displayed when you launch the command to apply a patch to an administrative installation location. To do this silently, append a /qb switch to the command line and include the TARGETDIR parameter.



Once the command is launched to apply the msp to the administrative installation, the setup dialog box will prompt you for the network installation location. This installation location will be prepopulated with the location of your

11.0 administrative installation. Do not change this location; you want the files in this location to be updated with the patch changes.

Once the setup is complete, the setup.msi will have been updated with the patch changes. The date of the setup.msi will be updated to the current date. After the administrative image has been updated with the patch, the patch cannot be removed from the administrative image.

- Redeploy the ArcGIS package.
 1. Select the package in the GPMC, right-click, and click Edit.
 2. In Group Policy Management Editor, select GPO > Computer Configuration > Policies > Software Settings > Software installation.
 3. Right-click the package and click All tasks > Redeploy application.
 4. Click Yes to the message, confirming that you want to redeploy the application.
- Redeployment of the application occurs on the next logon or reboot, depending on how the application was deployed (user-based deployment or computer-based deployment). For more information on applying patches to an administrative installation, see [Microsoft Knowledge Base Article 226936](#).

Uninstalling Setups Deployed Using Group Policy

There are two ways to uninstall setups that were deployed using Group Policy:

- For uninstalling on specific computers, remove the computer account from the OU and reboot the computer. The application will be uninstalled during the boot-up process.
- If you want to uninstall an application from all computers to which GPO has been linked and enabled, follow the steps below:
 1. Right-click GPO in GPMC > Edit.
 2. In Group Policy Management Editor, go to Computer Configuration > Policies > Software Settings > Software installation.
 3. In the right pane, select the application and right click it. Click All Tasks > Remove.
 4. Click Immediately uninstall the software from users and computers and click OK.

The next time the computer reboots, the product will be uninstalled.

Enterprise Deployment Using SMS/SCCM

Introduction Using SMS or SCCM as an enterprise deployment tool enables software to be distributed to all Windows operating systems using the software distribution feature. Enterprise deployment with SMS or SCCM allows distribution of software to computers without having to physically visit the location of the computers. Instead, a package is created that contains the program. For ArcGIS Enterprise 11.0 and ArcGIS Pro setups, the MSI file is bundled with the msiexec command line parameters to create a package.

The package is then distributed to collections, which are computers or groups of users. Once a package has been distributed, client machines are alerted, and the user can choose to install the package immediately or schedule a time for installation. Packages can be run with administrative rights even if the user who is logged on is not an administrator. Packages can also be set to run whether or not a user is logged on to the machine. For more information on SMS and SCCM, see www.microsoft.com. Deploying software to client machines is a multistep process involving creating the software distribution share; creating a package, program, and advertisement; and, finally, initiating software installation on the client machine.

Create Software Distribution Share Before software can be deployed, it must be copied to a network share for easy access. If you are starting at a point where there are patches already available for the application that is being deployed, you have a choice to make: create an administrative image, apply a patch on it, and then deploy, or deploy the main setup and patch separately.

- Copy setup files to a network share.
 1. Copy the entire contents of the extracted setup files folder to your server machine for deployment. You cannot copy just the MSI file to your server machine for deployment; other associated files are also required.
 2. At the Create Program step, create different programs for the main setup and the patch and deploy them in sequence.

Or:

- Create an administrative image of the setup.
 1. You can create an administrative installation on the server using the standard msiexec command line parameters:

```
msiexec /a <setup location>\setup.msi /qb TARGETDIR= <installation
directory>/11.0/<product name>
```

It is important to include the TARGETDIR property; otherwise, INSTALLDIR will default to the drive with the most empty space including mapped drives. If a /qb parameter is not included, the setup dialog box will be launched, and that can be used to finish the administrative installation.

Some setups have files that are located in a directory structure that would exceed the Windows 256-character limit. If the Windows character limit is exceeded, you will receive installation error 1335. There are two workarounds for this issue: perform either an administrative installation to a directory structure that does not exceed the above limits or an administrative installation at the command line with the additional parameter of `SHORTFILENAMES=TRUE`:

```
msiexec /a <setup location>\setup.msi /qb TARGETDIR= <installation directory>/11.0/<product name> SHORTFILENAMES=TRUE
```

2. Patch the administrative installation using the following:

```
msiexec /a <location of the admin installation>\setup.msi /p <location of the .msp file>\<patch name>.msp.
```

Do not delete this administrative installation; it is required for modifying installation features and additional patching.

3. At the Create Program step, create one program.

The first method is more efficient in terms of network usage. While applying a patch, only the bits for a patch are sent to the client machine.

Create Package

- Start Configuration Manager Console.
- Start the New Package wizard.
 1. Click System Center Configuration Manager > Site Database > Computer Management > Software Distribution > Packages, then right-click and click New Package.
 2. Go through all dialog boxes and fill in all required information. On the Data Source dialog box, check the This package contains source files check box and then browse to the folder that contains Setup.exe.
- Use the Manage Distributions Points wizard.
 1. Right-click the package and click Manage Distribution Points.
 2. Go through all dialog boxes and fill in all required information. Select a distribution point.

Create Program

SCCM can deploy both setup.msi and Setup.exe, but to get the most out of SCCM, it is recommended that you deploy using Setup.exe. Setup.exe accepts standard Windows Installer command line parameters. See <http://msdn2.microsoft.com/en-us/library/Aa367988.aspx> for Windows Installer command line options.

There is no need to create transforms. Everything that you can do with the command line can be done in SCCM. Just pass in the same command line while creating the program in SCCM.

Access the New Program wizard by doing the following:

1. Go to the package and click Programs, then right-click and click New Program.
2. Go through all dialog boxes and fill in all required information. On the General dialog box for command line, you can type in the command line just the way you would for msiexec, except replace msiexec /I <Path to msi> with <Path to Setup.exe>.

For example:

- Install silently with default features to the default installation directory:

```
Setup.exe /qb-!
```

The /qb-! switch has a basic UI with no modal dialog boxes and hides the Cancel button. Use /qn for a completely silent installation.

- Install silently with all features to a nondefault installation directory:

```
Setup.exe /qb-! INSTALLDIR=C:\ArcGIS ADDLOCAL=ALL
```

- Install silently with custom features to a nondefault installation directory:

```
Setup.exe /qb-! INSTALLDIR=C:\ArcGIS ADDLOCAL=<feature1>,<feature2>,...
```

Create Advertisement Access the New Advertisement wizard by doing the following:

1. Navigate to System Center Configuration Manager > Site Database > Computer Management > Software Distribution > Advertisement, then right-click and click New Advertisement.
2. Go through all dialog boxes and fill in all required information. On the General dialog box, select Package and the program in the package that you want to advertise. Choose the collection that you want to deploy to.

Start Software Installation

Depending on your configuration in the advertisement and the command line in the program, the software will start installation after the next logon or reboot or be scheduled to run at a certain time.

Upgrading to 11.0

If you are upgrading from 10.7–10.9.1 to 11.0, create a new package, program, and advertisement to install and uninstall the 11.0 setup.

Deploying Localized Setups Using SCCM

Running Setup.exe provides a fully localized installation experience. Setup.exe is a bootstrapper executable that runs the main product localized setup.msi, then runs the language pack setup.msi as a secondary installation. For example, if you run Setup.exe for ArcGIS Server in Spanish, the mobile setup, as well as the Spanish Language Pack setup, will be installed. If additional language packs need to be installed, copy them to the Supplements folder prior to launching Setup.exe. All the language pack MSI files in the Supplements folder will be installed if the installation is launched using Setup.exe. There is no need to extract and deploy transform files.

Note: While the main product setup automatically installs the associated language pack, an Add/Remove item exists for both setups. The main product uninstallation process does not uninstall language packs. These will need to be manually uninstalled.

Uninstalling Setups Using SCCM

When the software is deployed, the Control Panel's Add/Remove Programs dialog box does not enable you to remove the software unless you have administrative privileges. Use SMS or SCCM to manage uninstallation of the software when uninstalling with elevated privileges for all users.

- Uninstall silently using product code.

```
msiexec /x <{product code}> /qb
```

For example: To uninstall ArcGIS Server 11.0 silently, use the following command line:

```
msiexec /x {A14CF942-415B-461C-BE3C-5B37E34BC6AE} /qb
```

- Any ArcGIS product can be uninstalled silently using the product code. [Knowledge Base article 28709](#) is updated and available with the product codes for ArcGIS releases.
- Create a new program within the same package and a new advertisement using the command line mentioned above.

Deploying ArcGIS Enterprise 11.0 Patches and QFEs Using SMS or SCCM

All ArcGIS Enterprise 11.0 patches are available as individual Windows Installer Patch (.msp) files that upgrade an existing installation. For SCCM, they have to be deployed like a regular MSI installation. To deploy, create a new package, program, and advertisement for SCCM.

There are two methods of deploying .msp files using SMS or SCCM. Select one of these methods to deploy ArcGIS patches:

- Apply the .msp file to an administrative installation and deploy the patched MSI file.

Or:

- Deploy the .msp file separately from the base product setup.msi.

To Apply the .msp File to an Administrative Installation and Deploy the Patched Windows Installer File

Applying the Windows Installer Patch to an administrative installation will update the setup.msi with patch changes. The setup.msi can then be deployed. To apply the patch to an administrative installation, do the following:

1. Create an administrative installation. If an administrative installation does not already exist on your server, create one using the code below:

```
msiexec /a <location of setup.msi>\setup.msi
```

2. Patch the administrative installation using `msiexec /a <location of the administrative installation>\setup.msi /p <location of the .msp file>\<patch name>.msp`.

For example: `msiexec /a c:\admins\11.0\Server\setup.msi /p c:\admins\Server\Serverpatch.msp`

Once the command is launched to apply the patch to the administrative installation, the setup dialog box will prompt you for the network installation location. This installation location will be prepopulated with the location of your ArcGIS Enterprise 11.0 administrative installation. Do not change this location; you want the files in this location to be updated with the patch changes.

Once the setup is complete, the `setup.msi` will have been updated with any patch changes. The date of the `setup.msi` will be updated to the current date.

3. Create an SMS or SCCM package using the patched MSI file and deploy it. The following command line parameter should be used: `msiexec /a <location of the administrative installation>\setup.msi`.

To Deploy the Patch .msp File Directly

The patch `.msp` file can be directly deployed using SMS or SCCM. The setup for the ArcGIS product must have already been deployed and installed on the client machine.

1. Copy the `.msp` file to the server machine.
2. Create a package to deploy the `.msp` file. The following command line parameter should be used:

```
msiexec /p <location of .msp file>\<patch name>.msp REINSTALL=ALL  
REINSTALLMODE=omus
```

REINSTALLMODE must always be equal to `omus`.

REINSTALL can be equal to `ALL` to reinstall all features already installed, or you can specify individual features (same feature names as `ADDLOCAL`).

3. Deploy the `.msp` package.

Troubleshooting the Installation

- If you receive an "Internal error, Install aborted" or "Corrupt Install" message when starting setup, ensure that the system `TEMP` variable is set to a valid folder where you have write access and space available.
- If you receive an error message upon clicking Next on the final installation dialog box, verify that all your system variables are set to a valid value. An empty system variable will cause the installation to fail. To check your system variables, go to Start > Settings > Control Panel > System and choose the Environment tab.

- Examine the Event Viewer.

Entries are logged in the Event Viewer when the Windows Installer results in an error or goes into repair. Examining the logs may offer insight into the solution.

1. Right-click My Computer.
2. Click Manage.
3. Expand the Event Viewer tree.
4. Click Application.
5. Search for Msinstaller entries related to ArcGIS.

- Capture a log of the installation.

1. From the desktop, go to Start > Run.
2. Enter the command below, modifying the setup location as necessary:

```
msiexec.exe /i <path to setup>\setup.msi /qb /L*v %TEMP%\Install.log
```

- Capture a log of the uninstallation.

1. From the desktop, go to Start > Run.
2. Enter the command below, modifying the product code as necessary:

```
msiexec.exe /x <{product code}> /qb /L*v %TEMP%\Uninstall.log
```

ArcGIS Pro ArcGIS Pro supports data visualization; advanced analysis; and authoritative data maintenance in 2D, 3D, and 4D. It supports data sharing across a suite of ArcGIS products such as ArcGIS Online and ArcGIS Enterprise, and enables users to work across the ArcGIS system through Web GIS. For comprehensive information on the installation of ArcGIS Pro, refer to the [installation guide](#) at the ArcGIS Resources website. For a list of supported operating systems and hardware requirements, refer to System Requirements at [ArcGIS Pro System Requirements](#).

ArcGIS Pro can be installed on the same machine as other ArcGIS Desktop releases or on a machine without any Esri products. ArcGIS Pro is part of ArcGIS Desktop, and customers who are entitled (current on maintenance) to ArcGIS Desktop can install ArcGIS Pro.

ArcGIS Pro setups can be deployed to a user or computer. Use the following criteria to decide what option to choose:

- If all users on the computer need to use ArcGIS Pro, then assign to computer.
- If only a particular user needs it, then assign to user.

Installing ArcGIS Pro Licensing Service

The ArcGIS Pro Licensing Service setup is installed with ArcGIS Pro. It is required for a per user installation of ArcGIS Pro to work offline with a concurrent use license or to utilize single use licensing.

To install the ArcGIS Pro Licensing Service, run ProLS.msi in "<ArcGIS Pro installation directory>\Resources\ArcGIS Pro Licensing Service" and follow the prompts. This requires administrative privileges. The ArcGIS Pro Licensing Service setup installs the 64-bit Flex Net service. The Flex Net service is automatically installed by a per machine instance of ArcGIS Pro; the Pro Licensing setup is only necessary to support per user installations.

Setup Dependency If the following products are not detected on the machine, setup will not proceed:

- Microsoft .NET Desktop Runtime 6.0.5 or a later patch release (6.0.6 and so on), using a Windows x64 installer, is required. The presence of Microsoft .NET Desktop Runtime 7 or later is inconsequential to installing or running ArcGIS Pro.
- For ArcGIS Pro to be installed per user on supported Windows Server operating systems, the registry key HKEY_LOCAL_MACHINE\SOFTWARE\Policies\Microsoft\Windows\Installer must contain the REG_DWORD data type DisableMSI, with a value of 0. For more information, see MSDN's topic, [DisableMSI](#).

Feature Dependency There are no feature dependencies.

Properties The following properties can be added to the msixec command line:

Parameter	Value	Case Sensitive	Required	Description
INSTALLDIR	%System Drive%\Program Files\ArcGIS\Pro in the case of a per machine installation and %System Drive%\%USERPROFILE%\AppData\Local\Programs\ArcGIS\Pro in the case of a current user	No	No	ArcGIS Pro installation location
ALLUSERS	1	No	No	Defines the installation context of the setup. ALLUSERS=1 specifies a per machine installation. If a user without administrative privileges attempts to set this to 1, the installation fails.
	2	No	No	ALLUSERS=2 specifies a per user installation. If this parameter is not specified, the silent installation defaults to per user.

Parameter	Value	Case Sensitive	Required	Description
MSIINSTALLPERUSER	1	No	No	To do a per user installation, specify both ALLUSERS=2 and MSIINSTALLPERUSER=1. This property is ignored if ALLUSERS=1 is specified.
ENABLEEUEI		Yes	No	Specifies whether to enable participation in the Esri User Experience Improvement program.
	1 (default)			Enables participation.
	0			To opt out of participation, specify ENABLEEUEI=0
ACCEPTEULA		Yes	Yes	This property is required to accept the End User License Agreement during a silent installation.
	YES			Specify ACCEPTEULA=YES to agree to the EULA and install the software.
	No			The software will not install if you specify NO or omit this property.
BLOCKADDINS	0 (default)	Yes	No	If specified, the BlockAddins registry value allows system administrators to configure the types of Add-ins that ArcGIS Pro will load. Created under HKEY_LOCAL_MACHINE\SOFTWARE\Esri\ArcGISPro\Settings. Note that this property is only read during a per machine installation; it is ignored if specified for a per user setup. Setting the property to 0 will load all add-ins regardless of whether they have digital signatures.
	1			Load and use only add-ins that are digitally signed by a trusted certificate authority.

Parameter	Value	Case Sensitive	Required	Description
	2			Load and use only add-ins that have been published by Esri.
	3			Load add-ins only from the administrator folders and all add-ins published by Esri.
	4			Do not load or execute add-ins in this application.
	5			Only load add-ins from the administrator folders
ADMIN_SETTINGS_PATH	<Path to the settings file>			ArcGIS Pro allows administrators to set default values for a select number of application settings in a .settingsConfig file. For per-machine installations only, set this property to the location where the .settingsConfig file resides. For more information, see Manage application settings .
ESRI_LICENSE_HOST	@<License Manager>	No	Yes for concurrent use	Machine name of license manager
SOFTWARE_CLASS	Viewer	Yes	Yes	Installs ArcGIS Pro as Basic level
	Editor			Installs ArcGIS Pro as Standard level
	Professional			Installs ArcGIS Pro as Advanced level
AUTHORIZATION_TYPE	SINGLE_USE	Yes	Yes	Installs ArcGIS Pro as a single use seat
	CONCURRENT_USE	Yes	Yes	Installs ArcGIS Pro as a concurrent use seat
	NAMED_USER	Yes	Yes	Installs ArcGIS Pro with a Named User license.

Parameter	Value	Case Sensitive	Required	Description
LOCK_AUTH_SETTINGS	True		No	If the authorization type is defined at the command line, then the registry string LOCK_AUTH_SETTINGS is set to True under HKEY_LOCAL_MACHINE\SOFTWARE\Esri\ArcGISPro\Licensing. When LOCK_AUTH_SETTINGS is True, the licensing settings in the registry apply to all ArcGIS Pro users on that machine—an individual user cannot make changes. To allow ArcGIS Pro users on the machine to define their own authorization settings through the ArcGIS Pro application, set LOCK_AUTH_SETTINGS to False.
CHECKFORUPDATESAT STARTUP (per-machine only)	0	No	No	For system administrators who wish to disable automatic update notifications for a per-machine installation of ArcGIS Pro, set this property to 0. Alternatively, browse to the registry key HKEY_LOCAL_MACHINE\SOFTWARE\Esri\ArcGISPro\Settings after installation to manually set CheckForUpdatesAtStartup to 0.
	1 (default)			
ARCGIS_CONNECTION		No	No	Specifies whether a connection to www.arcgis.com should be available from the Portals page.
	TRUE			To include the connection, set this property to "TRUE".
	FALSE			If set to "FALSE", the connection will not appear on the Portals page.

Parameter	Value	Case Sensitive	Required	Description
Portal_List	<portalURL1>; <portalURL2>	No	No	To add one or more portal connections to the Portal page, set Portal_List="<portalURL1>; <portalURL2>". Use semicolons to separate portal URLs. If "ArcGIS_Connection" is set to "False", this property cannot contain "arcgis.com". If your portal supports HTTPS, it is strongly recommended that the Portal_List URL(s) uses HTTPS.
License_URL	<portalURL>	No	No	To specify the URL of the Named User licensing portal, set License_URL="<portalURL>". If "ArcGIS_Connection" is set to "False", "License_URL" cannot contain "arcgis.com". To use this property, "AUTHORIZATION_TYPE" must be set to "NAMED_USER".

To install to per machine, use the following command line:

```
msiexec.exe /i <setup location>\ArcGISPro.msi /qb ALLUSERS=1
```

To install to per user, use the following command line:

```
msiexec.exe /i <setup location>\ArcGISPro.msi /qb ALLUSERS=2 MSIINSTALLPERUSER=1
```

If ALLUSERS and MSIINSTALLPERUSER are not specified on the command line for a silent installation, it will default to per user installation.

Features Available The following features are available for installation. The setup can be modified to install only specific features by appending the ADDLOCAL parameter to the msiexec command line.

Feature	Feature Parent	Title	Description
Pro		ArcGIS Pro	This is the main ArcGIS Pro application. ArcGIS Pro supports data visualization, advanced analysis and authoritative data maintenance in both 2D and 3D.
Solutions		Solutions	These are the optional ArcGIS Pro Solutions.
ProIntel	Solutions	ArcGIS Pro Intelligence	ArcGIS Pro Intelligence supports the visualization, exploration, and analysis of disparate data to produce actionable intelligence.

Localized Setups ArcGIS Pro is available in Simplified Chinese, Polish, Traditional Chinese, French, German, Japanese, Brazilian Portuguese, Russian, Ukrainian, Spanish, Turkish, Czech, Swedish, Korean, Hebrew, Arabic, Italian, and Finnish. Running setup.exe provides a fully localized installation experience. Setup.exe is a bootstrapper executable file that will run the main product setup.msi and then run the language pack setup.msi as a secondary installation.

When running a localized ArcGIS Pro installation, the option to Run ArcGIS Pro when the setup completes appears on the Ready to Install dialog box. If the option is left selected, ArcGIS Pro starts after the installation of the core product and its corresponding language pack. ArcGIS Pro does not start automatically after a silent installation.

Transforms Changing INSTALLDIR

For per machine installation

1. In the CustomAction table, add a new row with the following values:

Action: SetInstallDir
Type: 51
Source: INSTALLDIR
Target: c:\MyPro

2. In the InstallExecuteSequence table, add a new row with the following values:

Action: SetInstallDir
Sequence: 965

For per user installation

1. In the CustomAction table, add a new row with the following values:

Action: SetInstallDir
Type: 51
Source: INSTALLDIR
Target: [TempFolder]\MyPro

2. In the InstallExecuteSequence table, add a new row with the following values:

Action: SetInstallDir
Sequence: 965

3. In the Property table, change the following properties:

ALLUSERS=1
MSIINSTALLPERUSER=""

Specify License Server for Concurrent Use

In the Property table, modify the ESRI_LICENSE_HOST value to your license server:

```
Property= ESRI_LICENSE_HOST  
Value=yourlicenseserver
```

Specify Authorization Type

Concurrent Use Licensing:

In the Property table, add a new row with the following values:

```
Property=AUTHORIZATION_TYPE  
Value=CONCURRENT_USE
```

Single Use Licensing:

In the Property table, add a new row with the following values:

```
Property=AUTHORIZATION_TYPE  
Value= SINGLE_USE
```

Named User Licensing:

In the Property table, add a new row with the following values:

```
Property=AUTHORIZATION_TYPE  
Value= NAMED_USER
```

Specify Authorization Level

In the Property table, add a new row with the following values:

```
Property=SOFTWARE_CLASS  
Value=Professional
```

For installing ArcGIS Pro as Basic level use value "Viewer," for standard level use "Editor," and for Advanced level use "Professional."

Uninstall To uninstall ArcGIS Pro silently, use the following command line:

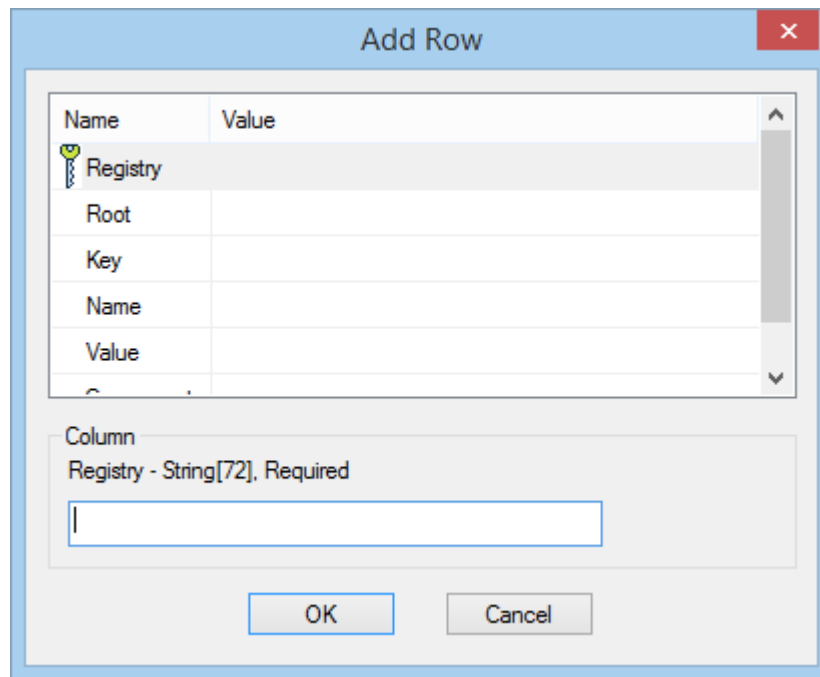
```
msiexec.exe /x {690B606E-8A38-4CB9-B088-241F60A86072} /qb
```

The product code changes with every update of ArcGIS Pro. The product code for ArcGIS Pro is found in the registry at either
HKEY_LOCAL_MACHINE\SOFTWARE\Microsoft\Windows\CurrentVersion
\Uninstall\ArcGISPro (for a per machine installation) or
HKEY_CURRENT_USER\SOFTWARE\Microsoft\Windows\CurrentVersion
\Uninstall\ArcGISPro (for a per user installation) in the string value UninstallString.

Software Updates When Esri releases an update for the application, by default, a notification appears when you start ArcGIS Pro. You can click the notification message to start the software update process. To check for updates in the middle of a session, click the Project tab and click About. If updates are available, you can run the update process. You can also turn off the option to check for updates when starting ArcGIS Pro.

To disable automatic update notifications for a per machine installation of ArcGIS Pro, browse to the registry key HKEY_LOCAL_MACHINE\SOFTWARE\Esri\ArcGISPro\Settings and set the value of CheckForUpdatesAtStartup to 0.

ArcGIS Pro configuration (Registry - Per machine) The following settings will only work if ArcGIS Pro is deployed to a per machine environment. Open the msi in Orca and add a row in Registry table for each setting. When adding a row it will ask for 6 values: Name, Registry, Root, Key, Component_, and Value.



AdminAddInLock

Value = #1 (User cannot change the Administrator BlockAddIns security level)
 Value = #0 (Default)

Registry	RegPMTAAL
Root	-1
Key	Software\Esri\ArcGISPro\Settings

Name	AdminAddInLock
Value	#1
Component_	ISRegistryComponent

BlockCustomizeDialog

Value = #1 (Disable customizing the Ribbon property sheet)

Value = #0 (Default)

Registry	RegPMTBCD
Root	-1
Key	Software\Esri\ArcGISPro\Settings
Name	BlockCustomizeDialog
Value	#1
Component	ISRegistryComponent

BlockMajorUpdateNotifications

Value = #1 (Block major version software updates only)

Value = #0 (Default)

Registry	RegPMTBMUN
Root	-1
Key	Software\Esri\ArcGISPro\Settings
Name	BlockMajorUpdateNotifications
Value	#1
Component_	ISRegistryComponent

ConfigurationFolder

Value = Path to a local directory or share to search for configurations

Value = Empty (Default)

Registry	RegPMTConfigFolder
Root	-1
Key	Software\Esri\ArcGISPro\Settings
Name	ConfigurationFolder
Value	<Path to Share or local directory>
Component_	ISRegistryComponent

ConfigurationName

Value = Name of the configuration file

Value = Empty (Default)

Registry	RegPMTConfigName
Root	-1
Key	Software\Esri\ArcGISPro\Settings
Name	ConfigurationName
Value	<Name of the configuration file>
Component	ISRegistryComponent

WebViewEvergreenMode

Value = #1 (Use the Evergreen WebView2 runtime installed on machine,)

Value = #0 (Default)

Registry	RegPMTWVEM
Root	-1
Key	Software\Esri\ArcGISPro\Settings
Name	WebViewEvergreenMode
Value	<Path to Share or local directory>
Component	ISRegistryComponent

Add-In Folders

For “Name” specify full paths to the folder locations or UNC shares that are to be searched for Add-ins. For example: C:\Data\AddinFolder1

Registry	RegPMTAddinFolders
Root	-1
Key	Software\Esri\ArcGISPro\Settings\Add -In Folders
Name	<Path to Share or local directory>
Value	
Component	ISRegistryComponent

Configuration Folders

For “Name” specify full paths to the folder locations or UNC shares that are to be searched for Configurations. For example: C:\Data\ConfigurationFolder1

Registry	RegPMTConfigFolders
Root	-1
Key	Software\Esri\ArcGISPro\Settings\ Configuration Folders
Name	<Path to Share or local directory>
Value	
Component	ISRegistryComponent

More detailed information regarding ArcGIS Pro configuration through Registry Keys is available at [ArcGIS Pro Registry Keys](#).

**ArcGIS Pro
configuration
(Registry - Per User)**

The following settings will only work if ArcGIS Pro is deployed to a per user environment.

UserConfigLocationLocal

Value = ArcGIS Pro user.config setting's file "local" path. Example:
C:\Users\user-
name\AppData\Local\Esri\ArcGISPro_StrongName_yhpsrysqpn4fvmb0spwbakt5
o5e50din\3.0.0.0\user.config

Registry	RegPUTUCLL
Root	-1
Key	Software\Esri\ArcGISPro\Settings
Name	UserConfigLocationLocal
Value	<Path to local user.config>
Component	ISRegistryComponent

UserConfigLocationRoaming

Value = ArcGIS Pro user.config setting's file "roaming" path. Example:
C:\Users\user-
name\AppData\Roaming\Esri\ArcGISPro_StrongName_yhpsrysqpn4fvmb0spwb
akt5o5e50din\3.0.0.0\user.config

Registry	RegPUTUCLR
Root	-1
Key	Software\Esri\ArcGISPro\Settings
Name	UserConfigLocationLocal
Value	<Path to roaming user.config>
Component	ISRegistryComponent

Add-In Folders

For “Name” specify full paths to the folder locations or UNC shares that are to be searched for Add-ins. For example: C:\Data\AddinFolder1

Registry	RegPUTAddinFolders
Root	-1
Key	Software\Esri\ArcGISPro\Settings\Add-In Folders
Name	<Path to Share or local directory>
Value	
Component	ISRegistryComponent

More detailed information regarding ArcGIS Pro configuration through Registry Keys is available at [ArcGIS Pro Registry Keys](#).

ArcGIS Pro configuration (settings file)

System administrators can set default values for a select number of application settings. You can also lock these settings so that users cannot change them. There are three basic steps to control application settings in your ArcGIS Pro deployment:

1) Author a Pro.settingsConfig file

To control application settings, you must first author a Pro.settingsConfig file. These files are written in the Extensible Markup Language (XML) format but have the file extension .settingsConfig instead of .xml.

2) Post the file to a directory or share accessible by users.

After authoring a Pro.settingsConfig file, deploy it to a share or a local directory. Set the file permissions on the share or folder that hosts Pro.settingsConfig to be read-write only for the administrator who created the file and read-only for the users of the ArcGIS Pro client machines. If you don't protect the file with proper permissions, users can alter the values inside the Pro.settingsConfig file, changing the defaults and locked settings for all users.

3) Configure the user machines to use the deployed file.

Once configured, the client machine checks the config file during each ArcGIS Pro application startup, changing the user's settings accordingly. The location of the config file can be specified by the [ADMIN SETTINGS PATH](#) command line parameter during an ArcGIS Pro installation.

More detailed information regarding how to create, edit, and deploy the settings file is available at [Manage application settings](#).

ArcGIS Pro Licensing Service

The ArcGIS Pro Licensing Service setup is installed with ArcGIS Pro. It is required for a per user installation of ArcGIS Pro to work offline with a concurrent use license or to utilize single use licensing.

To install the ArcGIS Pro Licensing Service, run ProLS.msi in "<ArcGIS Pro installation directory>\Resources\ArcGIS Pro Licensing Service" and follow the prompts. This requires administrative privileges. The ArcGIS Pro Licensing Service setup installs the 64-bit Flex Net service. The Flex Net service is automatically installed by a per machine instance of ArcGIS Pro; the Pro Licensing setup is only necessary to support per user installations.

Setup Dependency There are no setup dependencies.

Feature Dependency There are no feature dependencies.

Properties The following properties can be added to the msixec command line:

Parameter	Value	Case Sensitive	Required	Description
INSTALLDIR	%System Drive%\Program Files\ArcGIS Pro Licensing Service	No	No	ArcGIS Pro Licensing Service installation location

Features Available None

Localized Setups ArcGIS Pro Licensing Service is available in Simplified Chinese, Traditional Chinese, French, German, Japanese, Brazilian Portuguese, Russian, Spanish, Turkish, Czech, Swedish, Korean, Hebrew, and Finnish. Running setup.exe provides a fully localized installation experience.

Uninstall To uninstall ArcGIS Pro Licensing Service silently, use the following command line:

```
msiexec.exe /x {A61F82B0-6B91-4496-B39A-E0611B808783} /qb
```

ArcGIS Pro Language Packs

There are 18 language packs available for ArcGIS Pro—Simplified Chinese, Polish, Traditional Chinese, French, German, Japanese, Brazilian Portuguese, Russian, Ukrainian, Spanish, Turkish, Czech, Swedish, Korean, Hebrew, Arabic, Italian, and Finnish. Use Setup.exe to accomplish a fully localized installation experience. Setup.exe is a bootstrapper executable file that will run the main product setup.msi and then run the language pack MSI as a secondary installation. For example, if you run Setup.exe for ArcGIS Pro in Spanish, both the ArcGIS Pro setup and Spanish Language Pack setup will be installed. Additional language packs must be installed separately.

While the ArcGIS Pro setup automatically installs the language pack, an Add/Remove item will exist for both setups. The ArcGIS Pro uninstallation process does not uninstall language packs, and they will need to be manually uninstalled using the Add/Remove Programs dialog box. Running setup.exe for a localized setup will upgrade both the main product installation and the language pack installation.

When running a localized ArcGIS Pro installation, the option to Run ArcGIS Pro when the setup completes appears on the Ready to Install dialog box. If the option is left selected, ArcGIS Pro starts after the installation of the core product and its corresponding language pack. ArcGIS Pro does not start automatically after a silent installation.

Setup Dependency ArcGIS Pro must be installed on the machine. Installation will follow Installcontext of ArcGIS Pro. If ArcGIS Pro is installed to per machine, then ArcGIS Pro language packs can only be installed to per machine. If ArcGIS Pro is installed to per user, then ArcGIS Pro language packs can only be installed to per user.

Feature Dependency None

Command Line Parameters The following properties can be added to the msixexec command line:

Parameter	Value	Case Sensitive	Required	Description
ALLUSERS	1	No	No	Defines the installation context of the setup. ALLUSERS=1 specifies a per machine installation. If a user without administrative privileges attempts to set this to 1, the installation fails.
	2	No	No	ALLUSERS=2 specifies a per user installation. If this parameter is not specified, the silent installation defaults to per user.
MSIINSTALLPERUSER	1	No	No	To do a per user installation, specify both ALLUSERS=2 and MSIINSTALLPERUSER=1. This property is ignored if ALLUSERS=1 is specified.

Features Available None

Transforms Changing INSTALDIR

ArcGIS Pro language packs installs to the Installation directory of ArcGIS Pro. It is not possible to change this with a transform.

Uninstall To uninstall ArcGIS Pro Language Packs silently, use the following command line:

```
msiexec.exe /x <Product Code> /qb
```

The product code changes with every update of ArcGIS Pro Language Packs. The product code for ArcGIS Pro is found in the registry at either HKEY_LOCAL_MACHINE\SOFTWARE\Microsoft\Windows\CurrentVersion\Uninstall\<ProductName> (for a per machine installation) or HKEY_CURRENT_USER\SOFTWARE\Microsoft\Windows\CurrentVersion\Uninstall\<ProductName> (for a per user installation), in the string value UninstallString.

Language	Product Name
Simplified Chinese	ArcGIS Pro—简体中文语言包
French	ArcGIS Pro—Module linguistique français
German	ArcGIS Pro—Sprachpaket Deutsch
Japanese	ArcGIS Pro—日本語パック
Brazilian Portuguese	ArcGIS Pro—Pacote de Idioma Português (Brasil)
Russian	ArcGIS Pro—Русский языковой пакет
Spanish	ArcGIS Pro—Paquete de idioma español
Turkish	ArcGIS Pro—Türkçe Dil Paketi
Czech	ArcGIS Pro—jazyková sada pro češtinu
Swedish	ArcGIS Pro—svenskt språkpaket
Korean	ArcGIS Pro—한국어 팩
Hebrew	ArcGIS Pro—חבילת שפה עברית
Finnish	ArcGIS Pro—ohjelman suomen kielipaketti
Arabic	ArcGIS Pro - حزمة اللغة العربية
Italian	ArcGIS Pro - Language Pack italiano
Polish	ArcGIS Pro - polski pakiet językowy
Traditional Chinese	ArcGIS Pro - 繁體中文語言套件
Ukrainian	ArcGIS Pro - Мовний пакет

ArcGIS Pro Help For comprehensive information on the installation of ArcGIS Pro Help, refer to the [installation guide](#) at the ArcGIS Resources website. For a list of supported operating systems and hardware requirements, refer to System Requirements at [ArcGIS Pro System Requirements](#).

By default, ArcGIS Pro uses the online help system. If you work offline or in an internet-restricted environment, you can change the help source to the offline help system. ArcGIS Pro Help setup installs offline help for ArcGIS Pro.

Setup Dependency ArcGIS Pro must be installed on the machine. Installation will follow Installcontext of ArcGIS Pro. If ArcGIS Pro is installed to per machine, then ArcGIS Pro Help can only be installed to per machine. If ArcGIS Pro is installed to per user, then ArcGIS Pro Help can only be installed to per user.

Feature Dependency There are no feature dependencies.

Command Line Parameters The following properties can be added to the msiexec command line:

Parameter	Value	Case Sensitive	Required	Description
ALLUSERS	1	No	No	Defines the installation context of the setup. ALLUSERS=1 specifies a per machine installation. If a user without administrative privileges attempts to set this to 1, the installation fails.
	2	No	No	ALLUSERS=2 specifies a per user installation. If this parameter is not specified, the silent installation defaults to per user.
MSIINSTALLPERUSER	1	No	No	To do a per user installation, specify both ALLUSERS=2 and MSIINSTALLPERUSER=1. This property is ignored if ALLUSERS=1 is specified.

Features Available None

Localized Setups ArcGIS Pro Help is available in English, Simplified Chinese, French, German, Japanese, Russian, and Spanish.

Transforms **Changing INSTALLDIR**

ArcGIS Pro Help installs to the Installation directory of ArcGIS Pro. It is not possible to change this with a transform.

Uninstall To uninstall ArcGIS Pro Help silently, use the following command line:

```
msiexec.exe /x <Product Code> /qb
```

The product code changes with every update of ArcGIS Pro Help. The product code for ArcGIS Pro is found in the registry at either HKEY_LOCAL_MACHINE\SOFTWARE\Microsoft\Windows\CurrentVersion\Uninstall\<ProductName> (for a per machine installation) or HKEY_CURRENT_USER\SOFTWARE\Microsoft\Windows\CurrentVersion\Uninstall\<ProductName> (for a per user installation) in the string value UninstallString.

Language	ProductName
English	ArcGIS Pro Help
Simplified Chinese	ArcGIS Pro 中文(简体)帮助
French	Aide ArcGIS Pro en français
German	ArcGIS Pro—Hilfe für Deutsch
Japanese	ArcGIS Pro ヘルプ (日本語)
Russian	Справка ArcGIS Pro на русском
Spanish	Ayuda de ArcGIS Pro en español

ArcGIS Data Interoperability for ArcGIS Pro

For comprehensive information on the installation of ArcGIS Data Interoperability for Pro, refer to the [installation guide](#) at the ArcGIS Resources website. For a list of

supported operating systems and hardware requirements, refer to System Requirements at [ArcGIS Pro System Requirements](#).

ArcGIS Data Interoperability for Pro gives the ability to integrate nonnative data into your GIS and share it with others who do not use ArcGIS.

Setup Dependency ArcGIS Pro must be installed on the machine in per machine context.

Feature Dependency None

Command Line Parameters The following property can be added to the msiexec command line:

Parameter	Default Value	Case Sensitive	Required	Description
INSTALLDIR	%System Drive%\Program Files \ArcGIS\Data Interoperability for ArcGIS Pro	No	No	Default installation location

Features Available None

Localized Setups None

Transforms **Changing INSTALLDIR**

For per machine installation

1. In the CustomAction table, add a new row with the following values:

Action: SetInstallDir
Type: 51
Source: INSTALLDIR
Target: c:\MyProData

2. In the InstallExecuteSequence table, add a new row with the following values:

Action: SetInstallDir
Sequence: 985

Uninstall To uninstall ArcGIS Data Interoperability for Pro silently, use the following command line:

```
msiexec.exe /x {78E79722-2A97-4CA9-A3FF-B45D3DD7D7FA} /qb
```

The product code changes with every update of ArcGIS Data Interoperability for Pro. The product code for is found in the registry at HKEY_LOCAL_MACHINE\SOFTWARE\Microsoft\Windows\CurrentVersion\Uninstall\Data Interoperability for ArcGIS Pro.

Deep Learning Libraries for ArcGIS Pro

Deep Learning Libraries for ArcGIS Pro includes a broad collection of components, such as PyTorch, TensorFlow, Fast.ai and scikit-learn, for performing deep learning and machine learning tasks. For a list of supported operating systems and hardware requirements, refer to the system requirements at [GitHub](#).

Setup Dependency ArcGIS Pro must be installed on the machine.

Feature Dependency None

Command Line Parameters None

Features Available None

Localized Setups None

Transforms **Changing INSTALLDIR**

Deep Learning Libraries for ArcGIS Pro installs to the Installation directory of ArcGIS Pro. It is not possible to change this with a transform.

Uninstall To uninstall Deep Learning Libraries for ArcGIS Pro silently, use the following command line:

```
msiexec.exe /x {16BAC979-0868-4E94-AAFC-3FEA47375F9E} /qb
```

The product code changes with every update of Deep Learning Libraries for ArcGIS Pro. The product code for is found in the registry at HKEY_LOCAL_MACHINE\SOFTWARE\Microsoft\Windows\CurrentVersion\Uninstall\Deep Learning Libraries for ArcGIS Pro.

ArcGIS Pro Coordinate Systems Data

ArcGIS Pro Coordinate Systems Data can be installed on the same machine as other ArcGIS Desktop releases or on a machine without any Esri products.

ArcGIS Pro Coordinate Systems Data setup can only be deployed to a user.

Setup Dependency ■ For ArcGIS Pro Coordinate Systems Data to be installed per user on supported Windows Server operating systems, the registry key HKEY_LOCAL_MACHINE\SOFTWARE\Policies\Microsoft\Windows\Installer must contain the REG_DWORD data type DisableMSI, with a value of 0. For more information, see MSDN's topic, [DisableMSI](#).

Feature Dependency There are no feature dependencies.

Properties The following properties can be added to the msiexec command line:

Parameter	Value	Case Sensitive	Required	Description
INSTALLDIR	%System Drive%%USERPROFILE%\AppData\Local\Programs\ArcGIS\CoordinateSystemsData	No	No	ArcGIS Pro Coordinate Systems Data installation location
ALLUSERS	2	No	No	ALLUSERS=2 specifies a per user installation. If this parameter is not specified, the silent installation defaults to per user.
MSIINSTALLPERUSER	1	No	No	To do a per user installation, specify both ALLUSERS=2 and MSIINSTALLPERUSER=1. This property is ignored if ALLUSERS=1 is specified.

To install to per user, use the following command line:

```
msiexec.exe /i <setup location>\ProCoordinateSystemsData.msi /qb ALLUSERS=2  
MSIINSTALLPERUSER=1
```

If ALLUSERS and MSIINSTALLPERUSER are not specified on the command line for a silent installation, it will default to per user installation.

Features Available The following features are available for installation. The setup can be modified to install only specific features by appending the ADDLOCAL parameter to the msiexec command line.

Feature	Feature Parent	Title	Description
CoordinateSystemsData		Coordinate Systems Data	Coordinate Systems Data
NorthAmericaGEOCON	CoordinateSystemsData	North America GEOCON	This feature contains grid files that convert between NAD 1983 (NSRS2007) and NAD 1983 (2011).
Vertical	CoordinateSystemsData	Vertical	This feature contains files for US GEOID12B and VERTCON, the world EGM84 and 2.5' by 2.5' EGM2008 geoid models, and other countries.

NADCON	CoordinateSystems Data	NADCON	This feature contains grid files that use the NADCON method.
NADCON5	CoordinateSystems Data	NADCON5	This feature contains grid files that use the NADCON5 method.
NTv2	CoordinateSystems Data	NTv2	Geographic transformation files needed by the NTv2 method.
VerticalWorld	CoordinateSystems Data	Vertical World 1x1	This feature contains the EGM2008 1' x 1' world geoid model file.

Localized Setups None

Uninstall To uninstall ArcGIS Pro Coordinate Systems Data silently, use the following command line:

```
msiexec.exe /x {57102580-1EB6-45ED-A8D7-02D791630D10} /qb
```

ArcGIS License Manager 2022.1

For comprehensive information on the installation of ArcGIS License Manager 2022.1, refer to the [reference guide](#) at the ArcGIS Resources website. For a list of supported operating systems and hardware requirements, refer to the [system requirements](#).

ArcGIS License Manager 2022.1 uses FlexNet Publisher license management software. Details on the version of FlexNet Publisher used in each version of ArcGIS License Manager can be found in [Knowledge Base article 13214](#). This version of the license manager will support all product releases listed within the [Supported Software Products](#) topic. Visit the [Existing users](#) page for information on migrating from previous versions to 2022.1.

Listed below are the Esri software products supported by ArcGIS License Manager 2022.1.

■ Concurrent Use

ArcGIS Desktop 10.8.2, 10.8.1, 10.8, 10.7.x, 10.6.x, 10.5.x, 10.4.x, 10.3.x, 10.2.x, 10.1 SP1, 10.1, 10.0, 9.x

ArcGIS Engine 10.8.2, 10.8.1, 10.8, 10.7.x, 10.6.x, 10.5.x, 10.4.x, 10.3.x, 10.2.x, 10.1 SP1, 10.1, 10.0

ArcGIS Pro 3.1.x, 3.0.x, 2.9.x, 2.8.x, 2.7.x, 2.6.x, 2.5.x, 2.4.x 2.3.x, 2.2.x, 2.1.x, 2.0.x, 1.4.x

ArcGIS CityEngine 2023.0*, 2022.x, 2021.x, 2020.x, 2019.x, 2018.x, 2017.x, 2016.x, 2015.x, 2014.x, 2013.x, 2012.x (* projected future release, subject to change)

ARC/INFO Workstation 10.0, 9.x

■ Named User (via ArcGIS Enterprise)

ArcGIS Pro 3.1.x, 3.0.x, 2.9.x, 2.8.x, 2.7.x, 2.6.x, 2.5.x, 2.4.x, 2.3.x, 2.2.x, 2.1.x, 2.0.x, 1.4.x, 1.3.x, 1.2.x, 1.1.x, 1.0.x

Drone2Map 2023.1*, 2022.x, 2.3.x, 2.2.x, 2.1.x, 2.0.x, 1.3.x, 1.2.x, 1.1.x, 1.0.x (* projected future release, subject to change)

For ArcGIS Enterprise, Pro, and License Manager version compatibility, please refer to the compatibility matrix in the [ArcGIS Enterprise Help documentation](#).

Setup Dependency

Microsoft Visual C++ 2015-2022 Redistributable (x64) Minimum version 14.31.31103. If the Visual C++ 2015-2022 Redistributable is not already installed, running setup.exe will install it before setup.msi is launched. Setup.msi will not install if Microsoft Visual C++ 2015-2022 Redistributable (x64) Minimum version 14.31.31103 is not already installed.

Feature Dependency

None

Command Line Parameters

The following property can be added to the msixexec command line:

Parameter	Default Value	Case Sensitive	Required	Description
INSTALLDIR	%System Drive%\Program Files\ArcGIS\LicenseManager	No	No	ArcGIS License Manager 2022.1 installation location
MODIFYFLEXDACL	FALSE	No	No	This is the default value.
	TRUE	No	No	Setting this property to TRUE alters the following permissions, allowing management of the FlexNet anchor service by any user: SERVICE_QUERY_CONFIG SERVICE_QUERY_STATUS SERVICE_ENUMERATE_DEPENDENTS SERVICE_START SERVICE_INTERROGATE SERVICE_USER_DEFINED_CONTROL READ_CONTROL
ACCEPTEULA		Yes	Yes	This property is required to accept the End User License Agreement during a silent installation.
	YES			Specify ACCEPTEULA=YES to agree to the EULA and install the software.

	No			The software will not install if you specify NO or omit this property.
--	----	--	--	--

Features Available None

Localized Setups ArcGIS License Manager 2022.1 setup is available in Arabic, Simplified Chinese, Finnish, French, German, Italian, Japanese, Brazilian Portuguese, Russian, Spanish, and Turkish. Running setup.exe provides a fully localized installation experience. Setup.exe is a bootstrapper executable file that will run the main product setup.msi and then run the language pack setup.msi as a secondary installation.

Transforms **Changing INSTALLDIR**

1. In the CustomAction table, locate the custom action GetInstallDir.
2. The target column for this custom action is [INSTALLDIR]. Change this to the desired installation location, for example, C:\MyLicenseManager\. The backslash must be included.

Uninstall To uninstall ArcGIS License Manager 2022.1 silently, use the following command line:

```
msiexec.exe /x {96804860-2C2F-4448-AE47-76CB160AD043} /qb
```

ArcGIS Server 11.0 For comprehensive information on the installation, refer to the [installation guide](#) at the ArcGIS Resources website. For a list of supported operating systems and hardware requirements, refer to the system requirements at [ArcGIS Enterprise 11.0 System Requirements](#).

ArcGIS Server communicates on ports 1098, 6006, 6080, 6099, and 6443. You will need to open these ports on your firewall before installing the software. More details on the ports is available online at [Ports used by ArcGIS Server](#).

After installing ArcGIS Server, you can get started right away with publishing services. In many cases, you should also install ArcGIS Web Adaptor. This component allows you to integrate your enterprise web server, such as IIS, with your ArcGIS Server site.

ArcGIS Web Adaptor gives you control over your site URL if you do not want users to see the default port 6080 or the default site name, arcgis. Using ArcGIS Web Adaptor, you can restrict outside users from accessing ArcGIS Server Manager or the ArcGIS Server Administrator Directory. With ArcGIS Web Adaptor in your site, you can perform authentication at the web tier. Finally, by associating your site to an enterprise web server, you can host web applications that use your services.

Setup Dependency If the following products are not detected on the machine, setup.msi will not proceed:

- 64-bit operating system.
- Machines with an underscore (_) in their names are not supported. The ArcGIS Server 11.0 setup will not proceed if an underscore is detected in the machine name.
- Microsoft Visual C++ 2015-2022 Redistributable (x86) Minimum version 14.31.31103. If the Visual C++ 2015-2022 Redistributable is not already installed, running setup.exe will install it before setup.msi is launched. Setup.msi will not install if Microsoft Visual C++ 2015-2022 Redistributable (x86) Minimum version 14.31.31103 is not already installed.
- Microsoft Visual C++ 2015-2022 Redistributable (x64) Minimum version 14.31.31103. If the Visual C++ 2015-2022 Redistributable is not already installed, running setup.exe will install it before setup.msi is launched. Setup.msi will not install if Microsoft Visual C++ 2015-2022 Redistributable (x64) Minimum version 14.31.31103 is not already installed.
- ArcGIS Server 11.0 cannot be installed on the same machine as any version of ArcGIS Desktop, ArcReader, and ArcGIS Engine clients.

Note: ArcGIS Server is not supported on domain controllers. Installing ArcGIS Server on a domain controller may adversely affect functionality.

Feature Dependency

- .NET Extension Support

The .NET Extension Support feature requires Microsoft .NET 6. If Microsoft .NET 6 is not found, the .NET Extension Support feature will not be available for installation. The .NET Extension Support feature is required for server object extension (SOE) development and use.

Command Line Parameters

The following properties can be added to the msixec command line:

Parameter	Default Value	Case Sensitive	Required	Description
INSTALLDIR	%System Drive%\Program Files\ArcGIS\Server	No	No	ArcGIS Server 11.0 installation location
INSTALLDIR1	Default for both GUI and silent installation is %System Drive%\Python27		No	Python installation location
USER_NAME	Local System account	Yes	No	Specify an existing domain or local account. If the specified local account does not exist, it will be created.
PASSWORD		Yes	Yes	Password for the account specified

Parameter	Default Value	Case Sensitive	Required	Description
ACCOUNT	UseConfigFile	Yes	No	If you are importing credentials from a file, set this parameter to UseConfigFile. There are no other valid values for this property.
EXPORTCONFIG		Yes	No	Exports the account information entered with the USER_NAME and PASSWORD command line parameters to an encrypted XML file
CONFIGPATH		Yes	No	Full path and name of server configuration file. Used in conjunction with ACCOUNT=UseConfigFile, this property specifies the server configuration file for configuring the ArcGIS Server 11.0 account. Used in conjunction with EXPORTCONFIG=Yes, this property specifies the name of the server configuration file and the location where it will be stored. The file name must end with .xml, and the specified folder must already exist.
MSA	FALSE	Yes	No	This parameter should only be used with a Managed Service Account. A Managed Service Account must already exist on your domain. Do not use this parameter with a local account or a domain account with password. A Managed Service Account will not use the PASSWORD parameter.
ACCEPTEULA		Yes	Yes	This property is required to accept the End User License Agreement during a silent installation.
	YES			Specify ACCEPTEULA=YES to agree to the EULA and install the software.
	No			The software will not install if you specify NO or omit this property.

ArcGIS Server 11.0 Account

The ArcGIS Server 11.0 account must be configured when ArcGIS Server 11.0 is installed silently. For production systems, it is recommended that a preexisting account be designated that resides in your domain or Active Directory and follows your organization's security policy. If the ArcGIS Server 11.0 account is not defined during a silent installation, or the credentials are not valid, the ArcGIS Server 11.0 setup displays a warning message during installation. The message can be closed by clicking OK. Under these circumstances, the ArcGIS Server 11.0 account is set to the Local System account.

When using an existing domain account, enter the following:

```
msiexec /I \\machinename\ArcGIS_Server\setup.msi /qb USER_NAME=mydomain\mydomainaccount
PASSWORD=my.password
```

When using a new or existing local account, enter the following:

```
msiexec /I \\machinename\ArcGIS_Server\setup.msi /qb USER_NAME=myaccount
PASSWORD=my.password
```

Server Configuration File

A server configuration file from previous installations or from other machines can be used to speed up the configuration process on other ArcGIS Server 11.0 machines and reduce the chance of inadvertently typing a wrong name or password. While the account password is encrypted, be sure to store the configuration file in a secure location. A server configuration file can be imported by specifying both ACCOUNT and CONFIGPATH parameters. It can be exported by specifying both EXPORTCONFIG and CONFIGPATH parameters.

When importing ArcGIS Server 11.0 account credentials using a server configuration file, enter the following:

```
msiexec /I \\machinename\ArcGIS_Server\setup.msi /qb ACCOUNT=UseConfigFile
CONFIGPATH=\\networkmachine \serverconfigs\standardaccount.xml
```

When exporting ArcGIS Server 11.0 account credentials to a server configuration file, enter the following:

```
msiexec /I \\machinename\ArcGIS_Server\setup.msi /qb EXPORTCONFIG=Yes
CONFIGPATH=\\networkmachine \serverconfigs\standardaccount.xml
```

Features Available

The following features are available for installation. The setup can be modified to install only specific features by appending the ADDLOCAL parameter to the msiexec command line. If Python 3.9.11 and NumPy 1.20.1 are not detected, the ArcGIS Server 11.0 setup will automatically install them.

Feature	Feature Parent	Title	Description
DotNetSupport	GIS_Server	.NET Extension Support	The .NET Extension Support feature is for developers who want to extend ArcGIS Server 11.0 with .NET server object extensions. This feature is also required for deploying .NET SOEs.

Feature	Feature Parent	Title	Description
GIS_Server		GIS Server	The GIS server hosts GIS services that are accessible through REST and SOAP. The GIS server includes a default web server; it is administered using Manager and browsed using Services Directory.

Existing ArcGIS Server Users

When upgrading from 10.7–10.9.1 silently, users must specify the ArcGIS Server account used by the ArcGIS Server 10.7–10.9.1 site. Typically, this is the account defined when installing 10.7–10.9.1. If the account has changed since 10.7–10.9.1 was installed, for example, by using the Configure ArcGIS Server Account utility, the user name and password designated when modifying the account must be entered. You can determine the ArcGIS Server account by accessing the Configure ArcGIS Server Account utility from the Start menu on the machine hosting ArcGIS Server. The ArcGIS Server account is listed in the dialog box.

If the ArcGIS Server account is not specified or does not match the ArcGIS Server account used by the current site, the installation process will display a message indicating the credentials could not be validated. The installation will exit as a result. In the examples below, the ArcGIS Server account used by the 10.9 site is myaccount.

ArcGIS Server 10.7–10.9.1 Users

The ArcGIS Server 11.0 setup package is designed to detect and upgrade an existing installation of ArcGIS Server 10.7–10.9.1 on the target system.

To upgrade using setup.exe, follow the step below:

1. On the machine hosting ArcGIS Server 10.7–10.9.1, run the following command line. Setup.exe will call setup.msi with the provided command line parameters.

```
<path to ArcGIS Server 11.0 setup download folder>\setup.exe /qb USER_NAME=myaccount  
PASSWORD=mypassword
```

To upgrade using setup.msi, follow the step below:

1. On the machine hosting ArcGIS Server 10.7–10.9.1, run the following command to run ArcGIS Server 11.0 setup.msi.

```
msiexec /i <path to ArcGIS Server 11.0 setup download folder>\setup.msi /qb  
USER_NAME=myaccount PASSWORD=mypassword
```

ArcGIS 10.6.1 and Previous for Server Users

You must uninstall versions 10.6.1 and earlier of ArcGIS Server from your machine before proceeding with the ArcGIS Server 11.0 installation.

Localized Setups

ArcGIS Server 11.0 setup is available in Arabic, Simplified Chinese, French, German, Italian, Japanese, Brazilian Portuguese, Russian, Spanish, and Turkish. Running setup.exe provides a fully localized installation experience. Setup.exe is a

bootstrapper executable file that will run the main product setup.msi and then run the language pack setup.msi as a secondary installation.

Transforms **Changing INSTALLDIR**

1. In the CustomAction table, locate the custom action GetInstallDir.
2. The target column for this custom action is [INSTALLDIR]. Change this to the desired installation location, for example, C:\MyServer\. The backslash must be included.

Uninstall To uninstall ArcGIS Server 11.0 silently, use the following command line:

```
msiexec.exe /x {A14CF942-415B-461C-BE3C-5B37E34BC6AE} /qb
```

ArcGIS Server 11.0 Language Packs

There are nine language packs available for ArcGIS Server 11.0—Arabic, Brazilian Portuguese, French, German, Italian, Japanese, Russian, Simplified Chinese, Spanish, and Turkish. Use Setup.exe to accomplish a fully localized installation experience. Setup.exe is a bootstrapper executable file that will run the main product setup.msi and then run the language pack MSI as a secondary installation. For example, if you run Setup.exe for ArcGIS Server 11.0 in Spanish, both the ArcGIS Server 11.0 Spanish setup and ArcGIS Server 11.0 Spanish Language Pack setup will be installed. Additional language packs must be installed separately.

While the ArcGIS Server 11.0 setup automatically installs the language pack, an Add/Remove item will exist for both setups. The ArcGIS Server 11.0 uninstallation process does not uninstall language packs, and they will need to be manually uninstalled using the Add/Remove Programs dialog box. Running setup.exe for a localized 10.9 setup will upgrade both the main product installation and the language pack installation.

Setup Dependency ArcGIS Server 11.0 must be installed on the machine.

Feature Dependency None

**Command Line
Parameters** None

Features Available None

Transform **Changing INSTALLDIR**

ArcGIS Server 11.0 Language Packs install to the Installation directory of ArcGIS Server 11.0. It is not possible to change this with a transform.

Uninstall To uninstall ArcGIS Server 11.0 Language Packs silently, use the following command line:

msiexec.exe /x <Product Code> /qb

Language Pack	Product Code
ArcGIS Server 11.0 Arabic Language Pack	{12FAF1E0-B717-419C-8E38-FEE421E65502}
ArcGIS Server 11.0 Brazilian Portuguese Language Pack	{718688F4-2C80-4873-9FDF-8860B42F5B3F}
ArcGIS Server 11.0 French Language Pack	{443E5E64-E31F-42A7-A906-8391DA4B059E}
ArcGIS Server 11.0 German Language Pack	{2CE4C1A2-EB2E-4044-A69E-2BA4D842DA58}
ArcGIS Server 11.0 Italian Language Pack	{5619CAEB-5291-4248-8D75-B82DCE5FE6B1}
ArcGIS Server 11.0 Japanese Language Pack	{684EDDB8-636F-4D6A-925C-94A8507E7049}
ArcGIS Server 11.0 Russian Language Pack	{83E3C4B2-5155-4B8C-BC50-621064D87F98}
ArcGIS Server 11.0 Simplified Chinese Language Pack	{04A7EE6A-9118-4476-A7EB-A95222DC1404}
ArcGIS Server 11.0 Spanish Language Pack	{34DE1A6A-8517-443B-9008-D2D96B7D065D}
ArcGIS Server 11.0 Turkish Language Pack	{9A336D59-6B22-4740-8769-F155B3CFB282}

Portal for ArcGIS 11.0 For a list of supported operating systems and hardware requirements, refer to the system requirements at [ArcGIS Enterprise 11.0 System Requirements](#).

- Setup Dependency**
- 64-bit operating system.
 - Microsoft Visual C++ 2015-2022 Redistributable (x64) Minimum version 14.31.31103. If the Visual C++ 2015-2022 Redistributable is not already installed, running setup.exe will install it before setup.msi is launched. Setup.msi will not install if Microsoft Visual C++ 2015-2022 Redistributable (x64) Minimum version 14.31.31103 is not already installed.

Feature Dependency None
Command Line Parameters The following property can be added to the msiexec command line:

Parameter	Default Value	Case Sensitive	Required	Description
INSTALLDIR	%System Drive%\Program Files\nArcGIS\Portal	No	No	Default installation location

Parameter	Default Value	Case Sensitive	Required	Description
CONTENTDIR	%System Drive%\arcgisportal	No	No	This property allows you to specify the portal's content directory. The location you specify must be a local directory; you cannot choose a shared network directory. This is because the Portal for ArcGIS service is configured to run under the Windows native Local System account by default. The Local System account cannot access network locations.
USER_NAME	Local System account	Yes	No	Specify an existing domain or local account. If the specified local account does not exist, it will be created.
PASSWORD		Yes	Yes	Password for the account specified
ACCOUNT	UseConfigFile	Yes	No	If you are importing credentials from a file, set this parameter to UseConfigFile. There are no other valid values for this property.
EXPORTCONFIG		Yes	No	Exports the account information entered with the USER_NAME and PASSWORD command line parameters to an encrypted XML file
CONFIGPATH		Yes	No	Full path and name of Portal configuration file. Used in conjunction with ACCOUNT=UseConfigFile, this property specifies the Portal configuration file for configuring the Portal for ArcGIS 10.9 account. Used in conjunction with EXPORTCONFIG=Yes, this property specifies the name of the Portal configuration file and the location where it will be stored. The file name must end with .xml, and the specified folder must already exist.

Parameter	Default Value	Case Sensitive	Required	Description
MSA	FALSE	Yes	No	This parameter should only be used with a Managed Service Account. A Managed Service Account must already exist on your domain. Do not use this parameter with a local account or a domain account with password. A Managed Service Account will not use the PASSWORD parameter.
ACCEPTEULA		Yes	Yes	This property is required to accept the End User License Agreement during a silent installation.
	YES			Specify ACCEPTEULA=YES to agree to the EULA and install the software.
	No			The software will not install if you specify NO or omit this property.

Features Available None

Localized Setups Setup is available in English only.

Transforms **Changing INSTALLDIR**

1. In the CustomAction table, locate the custom action GetInstallDir.
2. The target column for this custom action is [INSTALLDIR]. Change this to the desired installation location, for example, C:\MyPortal\. The backslash must be included.

Uninstall To uninstall Portal for ArcGIS 11.0 silently, use the following command line:

```
msiexec.exe /x {EB809599-C650-486A-85C6-D37618754AE4} /qb
```

Portal for ArcGIS 11.0 Help Language Pack

There is only one Language Pack setup for Portal for ArcGIS 11.0. The Portal for ArcGIS 11.0 Help Language Pack setup installs localized help files for all supported languages. The language-specific help shortcut will only be created for one of the specified languages included in the drop-down menu—Arabic, Chinese (Simplified Han), French, German, Italian, Japanese, Korean, Polish, Portuguese (Brazil), Russian, and Spanish. To change the shortcut language, uninstall the Portal for ArcGIS 11.0 Help Language Pack, install it again, and choose another language.

If you run Setup.exe for Portal for ArcGIS 11.0, the Portal for ArcGIS 11.0 Help Language Pack setup will not be installed automatically. It must be installed separately.

Setup Dependency Portal for ArcGIS 11.0 must be installed on the machine.

Feature Dependency None

Command Line Parameters The following property can be added to the msixexec command line:

Parameter	Default Value	Case Sensitive	Required	Description
ST_LANGUAGE	ar	Yes	No	Shortcut Language. The other languages that can be specified at the command prompt are given in the table below.

Language	Language Code
Arabic	ar
Chinese (Simplified Han)	zh-CN
French	fr
German	de
Italian	it
Japanese	ja
Korean	ko
Polish	pl
Portuguese (Brazil)	pt-BR
Russian	ru
Spanish	es

Features Available None

Transforms Changing INSTALLDIR

Portal for ArcGIS 11.0 Help Language Pack installs to the Installation directory of Portal for ArcGIS 11.0. It is not possible to change this with a transform.

Uninstall To uninstall Portal for ArcGIS 11.0 Help Language Pack silently, use the following command line:

```
msiexec.exe /x {A31F39FB-A3A3-4D03-9B6A-D97C0E3DD104} /qb
```

Portal for ArcGIS 11.0 Web Styles Portal for ArcGIS Web Style provides the complete set of 3D symbology for use in ArcGIS Enterprise portal's Scene Viewer. Install Web Styles after all other ArcGIS Enterprise components have been installed. If your base deployment was installed using the ArcGIS Enterprise Builder, the setup is already included. For a list of supported operating systems and hardware requirements, refer to the system requirements at [ArcGIS Enterprise 11.0 System Requirements](#).

Setup Dependency Portal for ArcGIS 11.0 must be installed on the machine.

Feature Dependency None

Command Line Parameters None

Features Available None

Localized Setups Setup is available in English only.

Transform Changing INSTALLDIR

Portal for ArcGIS Web Style installs to the Installation directory of Portal for ArcGIS. It is not possible to change this with a transform.

Uninstall To uninstall Portal for ArcGIS 11.0 Web Styles silently, use the following command line:

```
msiexec.exe /x {CCA0635D-E306-4C42-AB81-F4032D731397} /qb
```

ArcGIS Data Store 11.0 ArcGIS Data Store is an application that configures and manages data storage for the hosting server used with ArcGIS Enterprise deployments on Linux and Microsoft Windows. ArcGIS Data Store provides you with a setup and configuration experience that creates the following types of data stores: relational, tile cache, spatiotemporal, graph, and object. For a list of supported operating systems and hardware requirements, refer to the system requirements at [ArcGIS Enterprise 11.0 System Requirements](#).

Modify the firewall of the data store computer to allow communication on ports 2443 and 9876. If the firewall on the data store computer blocks communication through these ports, ArcGIS Server will not be able to connect to the data store.

- Setup Dependency**
- 64-bit operating system.
 - Microsoft Visual C++ 2015-2022 Redistributable (x64) Minimum version 14.31.31103. If the Visual C++ 2015-2022 Redistributable is not already installed, running setup.exe will install it before setup.msi is launched. Setup.msi will not install if Microsoft Visual C++ 2015-2022 Redistributable (x64) Minimum version 14.31.31103 is not already installed.

Feature Dependency None

Command Line Parameters The following property can be added to the msiexec command line:

Parameter	Default Value	Case Sensitive	Required	Description
INSTALLDIR	%System Drive%\Program Files\ ArcGIS\DataStore	No	No	Default installation location

Parameter	Default Value	Case Sensitive	Required	Description
USER_NAME	Local System account	Yes	No	Specify an existing domain or local account. If the specified local account does not exist, it will be created.
PASSWORD		Yes	Yes	Password for the account specified
ACCOUNT	UseConfigFile	Yes	No	If you are importing credentials from a file, set this parameter to UseConfigFile. There are no other valid values for this property.
EXPORTCONFIG		Yes	No	Exports the account information entered with the USER_NAME and PASSWORD command line parameters to an encrypted XML file
CONFIGPATH		Yes	No	Full path and name of configuration file. Used in conjunction with ACCOUNT=UseConfigFile, this property specifies the configuration file for configuring the account. Used in conjunction with EXPORTCONFIG=Yes, this property specifies the name of the configuration file and the location where it will be stored. The file name must end with .xml, and the specified folder must already exist.
MSA	FALSE	Yes	No	This parameter should only be used with a Managed Service Account. A Managed Service Account must already exist on your domain. Do not use this parameter with a local account or a domain account with password. A Managed Service Account will not use the PASSWORD parameter.

Parameter	Default Value	Case Sensitive	Required	Description
ACCEPTTEULA		Yes	Yes	This property is required to accept the End User License Agreement during a silent installation.
	YES			Specify ACCEPTTEULA=YES to agree to the EULA and install the software.
	No			The software will not install if you specify NO or omit this property.

Features Available None

Creating Data Store You can use the ArcGIS Data Store Configuration wizard to create a data store and join it to your ArcGIS Server site.

Alternatively, if you do not have access to a web browser, run the configuredatastore utility on the machine where you installed ArcGIS Data Store.

The utility is installed in <ArcGIS Data Store installation directory>/tools.

Open a command prompt using the Run as Administrator option. Run the configuredatastore.bat file and specify the ArcGIS Server URL with which you want to register the data store, the user name and password of an ArcGIS Server administrator, and the path to use for the ArcGIS Data Store data directory.

In this example, the ArcGIS Server URL is <https://myserver.domain.com:6443/arcgis/admin>, the administrator user name and password are siteadmin and T1n@sp, and the data directory is C:\data\.

```
configuredatastore https://myserver.domain.com:6443/arcgis/admin siteadmin T1n@sp c:\data\
```

The primary data store machine is created and registered with your ArcGIS Server site.

Localized Setups Setup is available in English only.

Transforms Changing INSTALLDIR

1. In the CustomAction table, locate the custom action GetInstallDir.
2. The target column for this custom action is [INSTALLDIR]. Change this to the desired installation location, for example, C:\MyDataStore\. The backslash must be included.

Uninstall Uninstalling ArcGIS Data Store also unregisters the data store from your ArcGIS Server site. Hosted feature layers that used the data in the data store will no longer function once you uninstall the software. However, the data still exists because the data store directory remains on the server after you uninstall ArcGIS Data Store. If you later decide you need the feature layers, you can register the data store with the same ArcGIS Server site.

To uninstall ArcGIS Data Store 11.0 silently, use the following command line:

```
msiexec.exe /x {ABCEFF81-861D-482A-A20E-8542814C03BD} /qb
```

ArcGIS Data Store 11.0 Help Language Pack

There is only one Language Pack setup for ArcGIS Data Store 11.0 The ArcGIS Data Store 11.0 Help Language Pack setup installs localized help files for all supported languages. The language-specific help shortcut will only be created for one of the languages specified in the drop-down menu—Chinese (Simplified Han), French, German, Japanese, Russian, and Spanish. To change the shortcut language, uninstall the ArcGIS Data Store 11.0 Help Language Pack, install it again, and choose another language.

If you run Setup.exe for ArcGIS Data Store 11.0, the ArcGIS Data Store 11.0 Help Language Pack setup will not be installed automatically. It must be installed separately.

Setup Dependency ArcGIS Data Store 11.0 must be installed on the machine.

Feature Dependency None

Command Line Parameters The following property can be added to the msiexec command line:

Parameter	Default Value	Case Sensitive	Required	Description
ST_LANGUAGE	zh-CN	Yes	No	Shortcut Language—The other languages that can be specified at the command prompt are given in the table below.

Language	Language Code
Chinese (Simplified Han)	zh-CN
French	fr
German	de
Japanese	ja
Russian	ru
Spanish	es

Features Available None

Transforms Changing INSTALLDIR

ArcGIS Data Store 11.0 Help Language Pack installs to the Installation directory of ArcGIS Data Store 11.0. It is not possible to change this with a transform.

Uninstall To uninstall ArcGIS Data Store 11.0 Help Language Pack silently, use the following command line:

```
msiexec.exe /x {E3D4651B-6A70-4243-9324-DA4DB1CDA3EE} /qb
```

ArcGIS Web Adaptor (IIS) 11.0

For comprehensive information on the installation of ArcGIS Web Adaptor (IIS) 11.0, refer to the [installation guide](#) at the ArcGIS Resources website. For a list of supported operating systems and hardware requirements, refer to the system requirements at [ArcGIS Enterprise 11.0 System Requirements](#).

ArcGIS Web Adaptor (IIS) allows you to integrate your existing IIS web server with ArcGIS Server and Portal for ArcGIS. You can use Web Adaptor solely with ArcGIS Server or Portal for ArcGIS, or you can configure Web Adaptor to work with both.

Web Adaptor can be used in various ArcGIS Server site configurations. For example, in a site with a single ArcGIS server, you can install Web Adaptor on the same machine as the ArcGIS server or offload it to a dedicated web server. In a multiple-machine deployment, you can have one entry point into your site by installing Web Adaptor on a single web server, or you can establish redundancy at the web server tier by installing Web Adaptor on multiple web servers.

If you have configured multiple Web Adaptor instances on a single web server, you can use different version numbers for all those instances. In version 10.2 and earlier, all Web Adaptor instances on a single web server were required to use the same version number; running the setup upgraded all existing Web Adaptor instances to the latest version.

Web Adaptor is a platform independent from ArcGIS Server; therefore, the Web Adaptor instance you deploy does not have to match the operating system platform of your ArcGIS Server site. For example, if you have a site composed of Linux machines, you can deploy ArcGIS Web Adaptor (IIS) to work with ArcGIS Server.

The version of ArcGIS Web Adaptor must always match the version of ArcGIS Server you are using. You can have a 10.2.1 or later version of ArcGIS Web Adaptor installed alongside earlier versions of ArcGIS Web Adaptor on the same machine. For example, you can have a 10.1 SP1 version and a 10.9 version of ArcGIS Web Adaptor installed on the same web server.

Each Web Adaptor instance must have its own unique name; you cannot have two Web Adaptor instances with the same name on a single web server. If a naming conflict is detected during the installation, a warning message is displayed. You need to uninstall the earlier version with the same name to resolve the conflict. Alternatively, you can change the name of one Web Adaptor instance to proceed with the installation.

Setup Dependency If the following products are not detected on the machine, setup will not proceed:

- Microsoft .NET Framework 4.5.2 or higher.
- Internet Information Services (IIS) and specific IIS components enabled (Supported versions are 8.0, 8.5, and 10)

If setup.exe is used to do a GUI installation of ArcGIS Web Adaptor (IIS) 11.0, the missing components are installed automatically. If setup.exe is used to deploy ArcGIS Web Adaptor (IIS) 11.0 using SCCM/SMS and IIS components are missing, the IIS Requirements verification dialog box, which installs the required IIS components, will pop up on the client machine. Users will have to click the I agree button to let the setup proceed. Installation using setup.msi, whether silent or GUI, will not proceed until the missing IIS components are installed.

If you are going to perform a silent installation of ArcGIS Web Adaptor, all required IIS components must be enabled manually. The ArcGIS Web Adaptor setup will not automatically enable missing IIS components when you are performing a silent installation.

- Windows 8.1, Windows 10, and Windows 11

For installations on Windows 8.1/10/11, the following IIS components must be installed:

Internet Information Services

◆ Web Management Tools

- ◇ IIS 6 Management Compatibility
 - IIS Metabase and IIS 6 configuration compatibility
- ◇ IIS Management Console
- ◇ IIS Management Scripts and Tools
- ◇ IIS Management Service

◆ World Wide Web Services

- ◇ Application Development Features
 - .NET Extensibility 4.5
 - ASP.NET 4.5
 - ISAPI Extensions
 - ISAPI Filters
- ◇ Common HTTP Features
 - Default Document
 - Static Content

- ◇ Security
 - Basic Authentication
 - Request Filtering
 - Windows Authentication
- Windows Server 2012 and Windows Server 2012 R2

For installations on Windows Server 2012 or 2012 R2, the following IIS components must be installed:

Web Server (IIS)

- ◆ Web Server
 - ◇ Common HTTP Features
 - Default Document
 - Static Content
 - ◇ Application Development
 - ASP.NET 4.5
 - .NET Extensibility 4.5
 - ISAPI Extensions
 - ISAPI Filters
 - ◇ Security
 - Basic Authentication
 - Windows Authentication
 - Request Filtering
 - ◇ Management Tools
 - IIS Management Console
 - IIS Management Scripts and Tools
 - Management Service
 - IIS 6 Management Compatibility
 - IIS 6 Metabase Compatibility
- Windows Server 2016

For installations on Windows Server 2016, the following IIS components must be installed:

Web Server (IIS)

- ◆ Web Server

- ◇ Common HTTP Features
 - Default Document
 - Static Content
- ◇ Security
 - Request Filtering
 - Basic Authentication
 - Windows Authentication
- ◇ Application Development
 - .NET Extensibility 4.5
 - .NET Extensibility
 - ASP.NET 4.5
 - ASP.NET
 - ISAPI Extensions
 - ISAPI Filters
 - WebSocket Protocol
- ◇ Management Tools
 - IIS Management Console
 - IIS 6 Management Compatibility
 - IIS 6 Metabase Compatibility
 - IIS Management Scripts and Tools
 - Management Service
- Windows Server 2019

Web Server (IIS)

- ◆ Web Server
 - ◇ Common HTTP Features
 - Default Document
 - Static Content
 - ◇ Security
 - Request Filtering
 - Basic Authentication
 - Windows Authentication

- ◇ Application Development
 - .NET Extensibility 4.5
 - .NET Extensibility
 - ASP.NET 4.7
 - ASP.NET
 - ISAPI Extensions
 - ISAPI Filters
 - WebSocket Protocol

- ◇ Management Tools
 - IIS Management Console
 - IIS Management Scripts and Tools
 - Management Service

- Windows Server 2022

Web Server (IIS)

- ◆ Web Server

- ◇ Common HTTP Features
 - Default Document
 - Static Content
- ◇ Security
 - Request Filtering
 - Basic Authentication
 - Windows Authentication

- ◇ Application Development
 - .NET Extensibility 4.5
 - .NET Extensibility
 - ASP.NET 4.8
 - ASP.NET
 - ISAPI Extensions
 - ISAPI Filters
 - WebSocket Protocol

- ◇ Management Tools
 - IIS Management Console
 - IIS Management Scripts and Tools
 - Management Service

Note: Windows 8.1, 10, and 11 are supported for basic testing and application development use only. They are not recommended for deployment in a production environment.

Feature Dependency None

Product Conflict ArcGIS Web Adaptor (IIS) can be installed even if any other Esri product from a previous version is installed on the client machine.

Command Line Parameters The following properties can be added to the msixec command line:

Parameter	Default Value	Case Sensitive	Required	Description
WEBSITE_ID	1	Yes	No	Numeric value of website. This is used to determine the website where the ArcGIS Web Adaptor instance will be created. The value for WEBSITE_ID is a number specific to each website on your server and assigned by IIS. The IDs for the websites on your server can be found in IIS Manager. The default website has an ID of 1. By default, the WEBSITE_ID parameter is set to the default website (even if multiple websites exist).
VDIRNAME	arcgis	Yes	No	Name of ArcGIS Web Adaptor web application. The instance name cannot contain spaces.
PORT		Yes	No	If the website has multiple ports, use the PORT parameter to install to the specified port of the WEBSITE_ID.
ACCEPTEULA		Yes	Yes	This property is required to accept the End User License Agreement during a silent installation.
	YES			Specify ACCEPTEULA=YES to agree to the EULA and install the software.
	No			The software will not install if you specify NO or omit this property.

To install ArcGIS Web Adaptor (IIS) silently, use the following:

```
<path to ArcGIS Web Adaptor (IIS) setup download>\Setup.exe /qb VDIRNAME=arcgis_1 WEBSITE_ID=4059640
```

Installing Multiple Instances Multiple instances of ArcGIS Web Adaptor (IIS) can be installed on the same machine at the same time. Each instance must have a unique website and instance name combination. The command line for Setup.exe and setup.msi is different.

For the setup.msi command line, first extract the .mst from setup.msi using MsiDb.Exe and use the following:

```
msiexec /I setup.msi /qb WEBSITE_ID=1 VDIRNAME=arcgis_1 MSINEWINSTANCE=1  
TRANSFORMS=:InstanceID1.mst
```

INSTANCEID goes from 1 to 20 for all 20 transforms.

For the Setup.exe command line, use the following:

```
Setup.exe WEBSITE_ID=2 VDIRNAME=arcgis_1
```

Features Available None

Upgrade Starting with version 10.2.1, ArcGIS Web Adaptor can be installed side by side with other versions of ArcGIS Web Adaptor so to upgrade an earlier version of ArcGIS Web Adaptor to 11.0, you need to uninstall the earlier version and install the 11.0 setup. During the 11.0 installation, you will specify the same name as your earlier Web Adaptor version. This guarantees your Web Adaptor URL will remain identical to the earlier version.

If a naming conflict is detected during the 11.0 installation, a warning message will appear. You will need to uninstall the earlier version with the same name to perform the upgrade.

After installing 11.0, you need to configure ArcGIS Web Adaptor with its corresponding ArcGIS Server site.

At 10.2 and earlier versions, running the setup upgraded all existing Web Adaptor instances to the latest version.

Localized Setups ArcGIS Web Adaptor (IIS) 11.0 setup is available in Arabic, Simplified Chinese, French, German, Italian, Japanese, Brazilian Portuguese, Russian, Spanish, and Turkish. Running setup.exe provides a fully localized installation experience. Setup.exe is a bootstrapper executable that will run the main product setup.msi and then run the language pack setup.msi as a secondary installation.

Transforms **Changing INSTALLDIR**

ArcGIS Web Adaptor (IIS) 11.0 installs to the home directory of IIS. It is not possible to change this with a transform.

Uninstall To uninstall ArcGIS Web Adaptor, follow the steps in the sections below.

1. Unregister Web Adaptor.

First, you will need to unregister Web Adaptor with your site using ArcGIS Server Manager. To do so, follow the steps below:

- a. Open Manager and log in as a user who has administrative access to ArcGIS Server. If you need help with this step, see Logging in to Manager.
- b. Click Site > Web Adaptor.

- c. Click Unregister Web Adaptor.
- d. In the Unregister Web Adaptor dialog box, click Yes.

Note: The unregistering functionality is only available starting at ArcGIS 10.1 SP1 for Server and is required beginning at 10.1 SP1. If your ArcGIS Server and Web Adaptor product versions are out of sync, you will need to make sure the components are upgraded to the same product version before proceeding.

2. Uninstall Web Adaptor.

Use your operating system's tools to uninstall Web Adaptor.

To uninstall ArcGIS Web Adaptor (IIS) 11.0 silently, use the following command line:

```
msiexec.exe /x {FCC01D4A-1159-41FC-BDB4-4B4E05B3436F} /qb
```

To uninstall ArcGIS Web Adaptor (IIS) 10.9.1 silently, use the following command line:

```
msiexec.exe /x {BC399DA9-62A6-4978-9B75-32F46D3737F7} /qb
```

To uninstall ArcGIS Web Adaptor (IIS) 10.9 silently, use the following command line:

```
msiexec.exe /x {1FD4759C-6858-42AD-A1DC-6DA0C3B1D28C} /qb
```

To uninstall ArcGIS Web Adaptor (IIS) 10.8.1 silently, use the following command line:

```
msiexec.exe /x {9695EF78-A2A8-4383-AFBF-627C55FE31DC} /qb
```

To uninstall ArcGIS Web Adaptor (IIS) 10.8 silently, use the following command line:

```
msiexec.exe /x {D6059C27-7199-4A94-806B-6C40EFD02828} /qb
```

To uninstall ArcGIS Web Adaptor (IIS) 10.7.1 silently, use the following command line:

```
msiexec.exe /x {5ECEF84F-592C-47D1-B7C5-9F3D7E2AB7CE} /qb
```

To uninstall ArcGIS Web Adaptor (IIS) 10.7 silently, use the following command line:

```
msiexec.exe /x {F343B520-F769-4D93-86D2-663168AC6975} /qb
```

To uninstall ArcGIS Web Adaptor (IIS) 10.6.1 silently, use the following command line:

```
msiexec.exe /x {1B4E7470-72F4-4169-92B9-EF1BDF8AE4AF} /qb
```

To uninstall ArcGIS Web Adaptor (IIS) 10.6 silently, use the following command line:

```
msiexec.exe /x {4FB9D475-9A23-478D-B9F7-05EBA2073FC7} /qb
```

To uninstall ArcGIS Web Adaptor (IIS) 10.5.1 silently, use the following command line:

```
msiexec.exe /x {0A9DA130-E764-485F-8C1A-AD78B04AA7A4} /qb
```

To uninstall ArcGIS 10.5 Web Adaptor (IIS) silently, use the following command line:

```
msiexec.exe /x {87B4BD93-A5E5-469E-9224-8A289C6B2F10} /qb
```

To uninstall ArcGIS 10.4.1 Web Adaptor (IIS) silently, use the following command line:

```
msiexec.exe /x {F53FEE2B-54DD-4A6F-8545-6865F4FBF6DC} /qb
```

To uninstall ArcGIS 10.4 Web Adaptor (IIS) silently, use the following command line:

```
msiexec.exe /x {B83D9E06-B57C-4B26-BF7A-004BE10AB2D5} /qb
```

To uninstall ArcGIS 10.3.1 Web Adaptor (IIS) silently, use the following command line:

```
msiexec.exe /x {10A57135-2051-41AE-B2D3-0B10470CDB9B} /qb
```

To uninstall ArcGIS 10.3 Web Adaptor (IIS) silently, use the following command line:

```
msiexec.exe /x {B52143C3-3085-4976-9795-ED134AEA0099} /qb
```

To uninstall ArcGIS 10.2.2 Web Adaptor (IIS) silently, run this command from the command line:

```
msiexec /x {5D50CC1F-63E9-400E-A62C-EEAD948618EC} /qb
```

To uninstall ArcGIS 10.2.1 Web Adaptor (IIS) silently, run this command from the command line:

```
msiexec /x {18C45289-5BB0-448E-813D-34D31DF68104} /qb
```

To uninstall ArcGIS 10.2 Web Adaptor (IIS) silently, run this command from the command line:

```
msiexec /x {1803FE22-6164-4DC4-B14E-EBD4148A8429} /qb
```

To uninstall ArcGIS 10.1 SP1 Web Adaptor (IIS) silently, run this command from the command line:

```
msiexec /x {0EAADB27-2BD7-4ED5-92E2-532F775BCCED} /qb
```

To uninstall ArcGIS 10.1 Web Adaptor (IIS) silently, run this command from the command line:

```
msiexec /x {11CCA428-4679-4D79-ADC0-A13F43290ACF} /qb
```

To uninstall additional instances of ArcGIS Web Adaptor silently, replace the above product code with the product code of the Web Adaptor instance to be uninstalled. Product codes for Web Adaptor (IIS) instances are listed below. The product codes are listed in the same order as the Web Adaptor instances installed on your system; for example, the first Web Adaptor instance created is the first product code listed below:

ArcGIS Web Adaptor (IIS) 11.0 instance product codes

```
{920A1EFA-D4DC-4C6D-895A-93FDD1EDE394}  
{258F0D35-985B-4104-BCC4-B8F9A4BB89B4}  
{7B128234-C3D8-4274-917F-BC0BCE90887F}  
{CD160BB2-3AA9-42CE-8BA0-4BFF906E81DE}  
{BBBD3910-2CBB-4418-B5CE-FB349E1E74F0}  
{594D4267-E702-4BA8-9DF4-DB91DCF94B3E}  
{D2538F6E-E852-4BE0-9D20-61730D977410}  
{BAB5BA8A-DE70-4F79-9926-D6849C218BF2}  
{E37D4B50-05EC-4128-AC65-10E299693A3C}  
{2BD1FC31-CFB0-488A-83B3-BEC066423FAA}  
{AA378242-0C2C-4CC2-9E33-B44E0F92577C}  
{F00D0401-C60F-4AB1-BCF2-ADA00DF40AA9}  
{5AE7F499-C7A3-4477-BBED-3D8B21FF6322}  
{5147A262-75C3-4CAE-BCF0-09D9EBBF4A24}  
{7D3F3C7C-A40D-42EC-BA38-E04E6B3CFA16}  
{36305F97-388A-4427-AF76-C4BA8BC2A3DC}  
{BB3F184D-C512-4544-8A7D-76A1F600AEC2}  
{A4CEFD65-D3DF-4992-AC4A-2CED8894F0BF}  
{36B75654-E4C2-4FF3-B9F7-0D202D1ECAC8}  
{0E14FDF9-3D6C-48E4-B362-B248B61FC971}
```

ArcGIS Web Adaptor (IIS) 10.9.1 instance product codes

```
{F48C3ABF-AF5F-4326-9876-E748DB244DB7}  
{AC4AD5BF-E0B4-4EE6-838E-93EE66D986EF}  
{F96ECEFD-2015-4275-B15D-363F53407390}  
{21B1638E-47E7-4147-B739-EB341F99986F}  
{78ABEA6E-4832-4087-B7BB-04746D1E83E8}  
{A624163D-A110-4959-BD82-98CB7CE6ECBE}  
{7A6E0537-43A2-4925-8F8A-E19715B21392}  
{4AE1AE3D-2471-4393-B0D9-ECB4D1368EB9}  
{C72DE321-E19C-4737-9513-AE39B1A32953}  
{49F98C43-955D-4BD8-A585-07BA45D72D0A}
```

```
{5DD68937-54F9-4015-A8DA-4602AFCA8986}  
{D3C16E17-DAB1-4025-A029-46C7598DCA4A}  
{A2CBD39F-C2DE-4983-9C70-7F108B52F402}  
{CA174887-E7C6-4DE9-8797-72CBD7FC4B1C}  
{B658575F-82ED-49BE-980C-D4A5089FCA7A}  
{CBEE526A-29B6-46FE-B7F8-B930A785CFF8}  
{76618450-9F2C-4FCC-9CDA-01A61F9E1953}  
{17591EF3-221C-4DD1-B773-6C9617925B5F}  
{566920BF-1EF3-4E62-B2BF-029475E35AAB}  
{4A3B27C6-7CB1-4DE8-BCB1-221B9A23E2E1}
```

ArcGIS Web Adaptor (IIS) 10.9 instance product codes

```
{E3CBD7DB-60AE-45F3-B281-F9556781E602}  
{D712233D-C35F-4A04-A7E8-6D3F00A40544}  
{D5EBAE28-7A5C-41E7-A04F-A1AAFF75C8AC}  
{2F798220-41AF-4D8D-B425-98095F3DC287}  
{06B94095-F4F9-4434-8358-2E84965B6301}  
{F2C06411-06A3-4617-8577-7975BD6CC32E}  
{10C21BB5-7E8C-47F6-AB6E-AC62300EA034}  
{B0D3E289-039D-470C-A9DC-1EB9713B2458}  
{35838A3A-D572-4B2B-8C83-4F8A99324F92}  
{CEEC063C-D280-490E-B795-373E7DE6266A}  
{4CB4458D-C08A-4DE8-9D0B-45C4E0B849F9}  
{83605278-1596-4C33-8484-CF2BD4C07587}  
{A2AE04B5-879C-4E0A-B237-D642D8BBE3C7}  
{38E1E357-BA81-4135-A11A-51FBC9C858DC}  
{947676E2-B5A6-49CB-A5AA-DFEB54D8F064}  
{8E838EF7-0B7D-4E2A-AF21-4639AC6E5492}  
{37913C5B-A6BA-4F1D-B12F-AD505B91D05A}  
{1C9C9C3C-CE4D-4F42-8A3B-78ECA6C57B8E}  
{0C000BEA-E770-4138-A707-CCB02E64469A}  
{D5CEFB24-D0FD-4C73-8685-205222E08C12}
```

ArcGIS Web Adaptor (IIS) 10.8.1 instance product codes

```
{E77ED9CA-7DC8-45FC-A8BB-57AD2096EF8A}  
{56F26E70-2C61-45BC-A624-E100175086F7}  
{996B7BC1-3AF4-4633-AF5F-F7BE67448F51}  
{0FB565D2-7C0E-4723-B086-C67443ADE5FD}  
{246A7BFA-BE78-4031-A36D-F7BB95FFC5E2}  
{7D3E447C-3DB7-488D-AB11-C84A02476FF5}  
{1B5B7A25-F639-44F8-987B-6CD8F88967BE}  
{4242D730-262E-45E0-8E1F-9060F03452C3}  
{7CF4D730-F1D6-4D01-B750-D1BA7E55C3CC}  
{179DB6A6-DFE4-4AF1-92D5-2FDDD831A783}  
{0F67B656-1ED6-4C87-9DB3-DA51ABEE40C0}  
{86F8D877-87EA-4296-9D48-64D7AE94330B}  
{80FEB406-8086-42FE-B14B-C45A96B36894}  
{5990ACD0-4A80-4115-BFAE-F8DEB498A7C0}  
{12E78447-5AD7-41DB-82E5-BEDAAE7242C0}  
{25A1ECD8-4FAA-4271-9586-6FD94549365D}
```

```
{221CCAE0-DA79-4C5E-ABCA-396E827334B1}  
{508FBAA8-FD44-4998-B797-1666BD41D804}  
{23EB5093-17EE-45A0-AE9F-C96B6456C15F}  
{BEB8559D-6843-4EED-A2ED-7BA9325EF482}  
{A12D63AE-3DE9-45A0-8799-F2BFF29A1665}
```

ArcGIS Web Adaptor (IIS) 10.8 instance product codes

```
{E77ED9CA-7DC8-45FC-A8BB-57AD2096EF8A}  
{068CA630-558A-4C4A-983F-ECF5F8183FC9}  
{F168EBD1-CEDA-469B-89E4-E79C85253CB6}  
{96229607-EC9D-4805-AF94-E1AC47676586}  
{D89375FD-6CAC-4204-8761-22F51B39E6A1}  
{BABA485F-681E-4B5D-95EF-54CC738F4A0C}  
{AEFE7DEE-1EEE-4F99-BCA7-2193B86C7058}  
{FC4B3333-7AEB-46C6-AD90-E071A18D653F}  
{119C0DB0-02B8-442C-B3F5-999D99C9D42F}  
{89946E15-3E27-4F13-946F-30205F18D34B}  
{5B21D9CD-DDC8-4768-88F6-3C0633E7B97E}  
{C0752042-FAAC-4A94-B5A4-918BE46B7595}  
{751ED05E-63BF-407C-9039-C72F33CC73D4}  
{720EDDD5-B0FD-4E53-8F80-0F328EA8ABE0}  
{5FBFC270-1AEE-4E41-B7A2-47F7C742EF95}  
{A46D3ECC-39D2-459C-9BC3-1C780CA5BCF1}  
{CAE80A6F-8046-47CE-B3F6-D2ACEDDDA99A}  
{0B5C6775-B1D2-4D41-B233-FC2CDC913FEE}  
{278663A9-7CA3-40D5-84EA-CA7A9CABACB6}  
{9452D085-0F4F-4869-B8B4-D660B4DD8692}
```

ArcGIS Web Adaptor (IIS) 10.7.1 instance product codes

```
{5F1D01EA-296E-4226-A704-6A90E2916782}  
{7368D3C8-F13B-4786-AE38-B51952F43867}  
{2C838C64-DF81-4A64-8618-072AD30D51C1}  
{D4054E1B-C75C-4F69-BBB7-DBE77250F345}  
{C2C75F23-3E15-43E4-A902-673569F3F0DF}  
{F633A04F-D08B-4EBF-B746-00ADA0334CE3}  
{7D13D8C5-751F-44B1-BEAE-C9EB8E13FDF8}  
{ACAA0479-B7C5-44A1-B5FD-34A018EA2137}  
{E0343824-0C94-4A6C-96F7-AA5E1D8F8437}  
{8D108926-DC71-493D-B2C9-8BAE04DD9047}  
{A19DF635-25F0-4371-AC42-A4EECAF8BD75}  
{78F54FC8-C530-4D7E-91CC-48B9BC364535}  
{CEFB5C80-707B-471A-B8BF-5EC333F1A8B2}  
{BE892BB6-842B-4A18-A0B7-E89C5AAAD1A3}  
{A11006D2-3C1A-4D56-917D-4417D3341ADD}  
{763E3951-E827-492B-8E86-F526F251083E}  
{57C506AE-3BB7-4936-9154-7A2744735456}  
{4E2BA3D3-EFD2-4FCE-91C0-1D15457F8F08}  
{1BBB3C99-8EF5-4225-B5DD-799E50582BF7}  
{F6E99E06-B303-4965-9566-2F21EE7FD130}
```


ArcGIS Web Adaptor (IIS) 10.7 instance product codes

```
{58A76431-E1A9-4D11-BB89-0D12C6E77C78}  
{E7B9D4A3-4E55-49F8-B34C-CA8745FFD894}  
{D89709DB-8B6D-431A-95D4-FFEB69C474D5}  
{858283F5-B9E9-4688-BF3C-BD3F3FD169D8}  
{DE2BA579-D2F0-4068-9C52-8AC24022F13D}  
{48405A7D-CFA4-4F6F-BB8C-B36A22E99B07}  
{BEC99E10-7AB1-4B90-9C81-D2CBFCAD4239}  
{C0C178B9-EBC6-46C5-B009-186661E9AEA3}  
{0D5F9D8E-B221-4C74-87C3-13050F906A94}  
{52EC0A7A-9BBA-4F47-9C52-2E1D1D09D9B4}  
{6CF9C794-AEC2-45EF-A11A-83938F01A1E9}  
{F36AF2F5-2E37-409B-9E71-D2D2B1D4A22F}  
{4F54A93E-2F0F-4515-99AA-83BF88961D5F}  
{A04ACEF7-4E22-4F4F-8608-9FD335572C6F}  
{0D562427-2AB5-46C6-998E-4C33D642DE10}  
{8C15E459-D24F-46E0-B945-CD4812A040AC}  
{24821676-BD09-49CA-95B4-591BBE86118A}  
{3C4D06FD-8194-4062-AB04-E87003CBE908}  
{71044157-41F9-4AEC-B6B1-834FBA256135}  
{C4ECCD46-EC43-4C44-8147-916649A2BA1B}
```

ArcGIS Web Adaptor (IIS) 10.6.1 instance product codes

```
{3FA8B44E-E0E3-4245-A662-6B81E1E75048}  
{8D6EE2C0-A393-49CD-A048-1D9FD435D7B8}  
{6C05375F-78A5-4DF7-A157-C2A6E0D7BAD2}  
{1F1EEC9F-80D5-48DD-B8BC-EB3D0404D9AD}  
{2CA5FC7F-1165-4870-9C16-004ACC848435}  
{E23D8BB8-0FEB-4316-8E09-80772FD1B5E0}  
{C67E73AB-8278-49C9-9CA8-A714E20B8124}  
{E527C0BD-E026-46D8-9461-2A7EEFBDA35A}  
{D5DF4279-E3FF-4261-AB85-93F8BDE90D8D}  
{8D439456-493A-4B48-A542-492AABD9CF7D}  
{D61CE1AE-2DB8-4D46-AC7F-3BEAB7C29A59}  
{9B07A4CE-58C6-4689-B37B-EFF565712CF2}  
{C97C2CEF-F939-496E-8CB7-8756856CBBC6}  
{59079961-A0BA-48DD-9B07-45437FCBC42A}  
{5372DAF1-7EB6-4822-843E-0B2F7A7B052B}  
{D807F4E9-0F87-4B3C-8F93-456251226187}  
{7BEB71AD-3958-41FB-8EC3-64DBE4775760}  
{286D4CB5-777E-4AA1-B2EB-D6A3A4212107}  
{37F3B528-915F-4528-949B-F199E4B3B4AA}  
{6FEB4C76-14AC-4A70-BE45-6CBAED529CAF}
```

ArcGIS Web Adaptor (IIS) 10.6 instance product codes

```
{38DBD944-7F0E-48EB-9DCB-98A0567FB062}  
{8214B9D8-49D9-43DB-8632-AE2BAD4B21E9}  
{B3FD1FE3-4851-4657-9754-73876D4CB265}
```

```
{88CDE5E9-23B8-4077-9E69-9CD3715BE805}  
{E7630CBC-96DE-4665-9C2A-D682CFFD5B0E}  
{E2601F84-D2E5-4DD4-B0EC-6AED75CB77D9}  
{75FB755F-AF36-484E-98A8-FADA56574D25}  
{AA32D01D-27CD-4842-90CF-F22C1BD6309B}  
{CF126207-4C89-44AA-8783-9BAA2BA5F106}  
{9F8694BE-613F-4195-AA42-B849E84D059A}  
{2C3BE00F-57BE-4D0B-81BC-3378D823CF0E}  
{EAC54B65-D6BC-41DC-8C82-5E99D7FD4271}  
{76C17CB6-106C-41F8-89BA-41C086E69238}  
{4493EB64-CAE0-439F-8FA6-897677D5A6C8}  
{0C59A27D-B4B6-4A23-8873-897B870F6E2B}  
{B46B6E63-D8E1-4EA4-9A9B-D98DFAA6644D}  
{89E6330E-6139-4F4B-BA9F-ACD59065230D}  
{238E647E-53DF-4B8B-B436-ADA5004065DE}  
{30EF8944-904A-45D3-96D4-7DF3B0FE01D5}  
{06012CC0-5C12-4499-B5CC-99E9D547A2FD}
```

ArcGIS Web Adaptor (IIS) 10.5.1 instance product codes

```
{B8A6A873-ED78-47CE-A9B4-AB3192C47604}  
{7DEAE915-5FAC-4534-853D-B4FC968DBDEB}  
{AC10F3CF-A5C1-44B0-8271-27F26D323D14}  
{5F748B0C-3FB6-42FF-A82D-C1573D3C1469}  
{428DE39D-BF23-42B5-A70E-F5DD5DD21C2C}  
{98B1DE9B-0ECF-4CAA-A29A-B89B2E8F38F1}  
{4876508B-31CF-4328-BE11-FFF1B07A3923}  
{D803A89F-4762-4EFD-8219-55F4C3047EDE}  
{4A5F404B-391F-4D13-9EE4-5B9AC434FD5A}  
{99FFFA13-2A40-4AA4-AAC1-9891F2515DB1}  
{2B04DE60-3E79-4B44-9A93-40CAC72DE2FB}  
{D595C9E2-BBA0-4708-A871-1166CD0CFB61}  
{50825C57-5040-436D-B64C-A53FFB897E9D}  
{5D750A11-BC80-45CE-B0DD-33BA8A5D8224}  
{60390703-9077-4DDE-8BB1-A025AB0FE75B}  
{BF75DC6C-F1A5-4A3C-A6A6-76BCB5DB5881}  
{96B29B2F-888A-4C2B-B8C3-97E9A7849F2F}  
{7FDD9158-2E93-4E12-A249-CD9D5445C527}  
{A868CBAC-D9A2-41A7-8A5B-069AB63FEC7B}  
{83462AE4-27BB-4B63-9E3E-F435BD03BB12}
```

ArcGIS Web Adaptor (IIS) 10.5 instance product codes

```
{604CF558-B7E1-4271-8543-75E260080DFA}  
{9666ABD8-8485-4383-B3DD-4D1598F582A3}  
{58264BBA-5F61-41D9-839A-00B6C2C66A63}  
{5988C905-772F-4F62-8339-1796C38674B7}  
{ADD5FF4F-EB57-4460-BD33-D55562AE6FA7}  
{EF65064A-96C8-4EA1-B76D-B9BCC97EF76A}  
{183C90B7-4F78-47CE-AF69-116BF6A34085}  
{6B2FA0A8-6F2C-4359-B7A4-D2F9FD63EE97}  
{ACF59C57-A613-44CC-A927-1D8C2B280516}
```

```
{2E5E4CDE-9964-4B40-A1F1-843C62AC789E}  
{2901A5D3-C16D-4993-A306-86261B0430B1}  
{AC910B51-6077-4055-B042-D72CA0D23D69}  
{8F36D583-35F0-43F2-8F8F-5B696F87183A}  
{37C2CAE2-4A81-4289-B318-93D63C63AA47}  
{CC345B69-1E26-4C56-B640-92BCBADBDF06}  
{F0FAE80D-0C51-4D9D-A79B-057396A2456D}  
{5BA355D1-D9B6-4CA0-B1C6-694377084464}  
{25118D44-AD2D-423F-85F0-5D730A2691B7}  
{D4855344-CEE0-47A3-BD50-D7E2A674D04E}  
{9CD66AA3-F0DA-46CC-A5DD-0BB5B23499AD}
```

ArcGIS 10.4.1 Web Adaptor (IIS) instance product codes

```
{475ACDE5-D140-4F10-9006-C804CA93D2EF}  
{0547D7D8-7188-4103-9387-A99FE15215AF}  
{25DFAFFF-07CE-42A2-B157-541D7980A3DA}  
{771998A8-A440-4F5F-B55A-0FE2C594208B}  
{C120DC32-DBEA-4CB1-94E4-F50A7EE09F5C}  
{3294151B-CA4C-4A89-BBC7-DCE521D8A327}  
{E04FB941-248D-4806-9871-04DB306EEA91}  
{66CD667D-440D-4CF1-9ECB-C6C77A7A0520}  
{7938463B-E744-4332-8617-39E91B10FC15}  
{C22C2AF5-D58E-4A4D-85DF-E3A38C83F37A}  
{9AF62D15-755B-43DE-878A-DBA23D33B28A}  
{D4F22207-C5FA-49B0-9466-9E4D37435882}  
{C8ADE9B2-3BC8-4417-97D0-785BA0CD86D9}  
{C85A40C5-00B9-4CDE-9299-397BFD5A2EAF}  
{E0BD73FB-4028-4A5D-9A24-9FA0BD614D4B}  
{83CF76EC-F959-46B3-9067-F59B2A846D2F}  
{F7D6BD55-8D07-4A57-8284-ADACE0F567D8}  
{C56A0E47-D4E1-4762-9BAF-07A19A154EE6}  
{09AC608B-7CE4-4280-9F4E-F2988A58428D}  
{5695B2B6-A25E-4013-B5F8-30686FDDFE0D}
```

ArcGIS 10.4 Web Adaptor (IIS) instance product codes

```
{E2C783F3-6F85-4B49-BFCD-6D6A57A2CFCE}  
{901578F9-BC82-498D-A008-EC3F53F6C943}  
{E3849BEC-6CAF-463F-8EFA-169116A32554}  
{EE889E4F-85C7-4B8A-9DAA-5103C9E14FD6}  
{89D96D88-CC2F-4E9B-84DD-5C976A4741EE}  
{0913DB77-F27B-4FDE-9F51-01BB97BBEBB9}  
{99B6A03C-D208-4E2E-B374-BA7972334396}  
{A0F3D072-0CD1-43D7-AFDA-8F47B15C217C}  
{0FE26871-21C3-4561-B52E-A8FED5C8E821}  
{1D1F3C15-F368-44AF-9728-6CF031D478AF}  
{CE5EC52D-B54D-4381-9F6E-2C08F7721620}  
{E71AEC5B-25F0-47E5-B52C-847A1B779E48}  
{5DA1F056-A3F1-46D5-8F2E-74E72F85B51B}  
{1EB3D37A-902A-43E2-9EAA-1B43BA10C369}
```

```
{839FFEB7-76B5-4CBB-A05E-E2276FC3421D}  
{594E1C33-1C6D-49B4-A83F-2A780193B75F}  
{34330B0C-34CD-4DCF-A68D-FDE7A1834659}  
{42A96EC7-7CA9-4F68-B946-E9BF84713605}  
{A1A8DAE4-B6F9-446F-8F6A-487F1E07A434}  
{3BF277C6-6A88-4F72-A08C-54F1E45F44E5}
```

ArcGIS 10.3.1 Web Adaptor (IIS) instance product codes

```
{2350F5B2-44A2-413E-804C-445DB177152B}  
{7729802B-A3BB-49E5-8BCC-8413C4F852F1}  
{6494393C-0657-4D5D-9A51-E54831E48CC4}  
{140F583D-4EB9-4A3A-8B60-2DA3A72234D1}  
{794D05F0-522C-42E7-AF0D-5A7FDECD7FB2}  
{D4CFB367-FF83-4632-AA26-F7138001C071}  
{096A7FDD-9548-44BE-B04D-1F82669850E3}  
{95DB352A-B1A4-49DD-9D16-5AD8870203D0}  
{D3C84839-B233-4951-8F9B-962D4CD81DB7}  
{2C858B42-0479-4F5B-9B3B-2489EDF9639F}  
{395889EC-8AB3-4570-AC77-11C2EEDB9A61}  
{BE5D14D7-5433-4F04-8E3A-6A6DB7032C28}  
{FD8D58CC-B361-4198-B83C-41DEF9AA9C81}  
{553CDCDB-5559-43B7-A61C-8838529634CA}  
{F569182C-6726-4BD3-B4C5-57982598761A}  
{89E4E8EC-4594-428F-AEAD-0936A7EC21A4}  
{F313D6A5-1057-4A09-B512-DB20D5D801D4}  
{7A22729E-048C-493B-8766-6FDF7155E134}  
{36FEEE30-C19C-416D-A19D-38D277F45620}  
{A1C899A0-8582-4C38-8A4B-DFAEC55681F0}
```

ArcGIS 10.3 Web Adaptor (IIS) instance product codes

```
{0E139F65-5170-4F6D-A27C-873C61DA98F6}  
{45CD1727-42C8-4986-90B0-5E16C58EBFC7}  
{D6447963-213B-4E7F-A133-02E995C6F948}  
{CB34AB51-E1EF-42C5-A0DF-C37C5C5F3160}  
{EDA2D3D2-733F-4B63-89BB-48AA5AD65A17}  
{8445558D-7ECF-4C2B-95AA-8C85E41140E8}  
{34072E47-BF27-4D33-A52B-B33BEDB667DA}  
{FD629592-E642-415F-B048-C53D8AD68866}  
{0BAD8A19-1D69-461E-817A-E4B1F7F26639}  
{556DAC0C-C01E-4D5E-B470-077A60BC5F28}
```

ArcGIS 10.2.2 Web Adaptor (IIS) instance product codes

```
{B4F6E64E-FC38-4743-92F0-F934EEFE683B}  
{1879DA6F-9FBE-406C-970A-E4E7D1D588F9}  
{058D6AC8-5E5D-42CE-B02D-1F93EA0CA2FD}  
{16990EFC-29DE-4973-AC57-FE4ED65CF149}  
{28832100-4AF5-4CE6-B397-EA209892A466}  
{9253CEB5-4FFD-4E2D-B6CC-8636D38C8776}  
{07C61E8A-EEB0-4E3A-BA98-BD1B6D2E996F}
```

```
{5F3600B0-3421-4734-9240-D69A65398E36}  
{F73700E5-E5E3-4B35-AFC3-182EC445D23F}  
{1636DF85-7289-4E4D-960F-D695167B7006}
```

ArcGIS 10.2.1 Web Adaptor (IIS) instance product codes

```
{345B5297-EB09-42E3-9AC4-726D2D3953AE}  
{EFB3F701-9AF6-4577-AE0A-0C0B09BCA5C8}  
{F3C325DE-3F65-4D60-AC47-0DD9D9E35B16}  
{4B9BF032-BF90-4B71-87D1-CAFC65FA67A7}  
{52D5974A-753E-419A-B5FE-3B01326B0F69}  
{A59DCF22-BEAE-484B-9997-4EC8426054A3}  
{94DD2DB1-C250-4BFD-A189-74774814DF5E}  
{2F3A4E46-FFA9-4359-A0E1-AEA0A38352FA}  
{8DE09037-50A3-4E3A-8F94-86DF0A116E22}  
{7A5BC91C-B3C0-465B-9670-643F88DAF793}
```

ArcGIS 10.2 Web Adaptor (IIS) instance product codes

```
{2A79BF0A-248E-45A1-B283-5EC0CFA07537}  
{EF39D7A8-94B9-4042-A480-8BB5F4CD04D6}  
{E045E259-E3FA-4C5B-9F85-8FB1A40FA1BB}  
{8C5ECECE-8FA3-4E6A-8219-62276CD40617}  
{DB03FAC4-6F6E-4A20-AA79-4D31A6C3E8C1}  
{9ADB734F-294E-4E03-808B-8BAECE9493E8}  
{2D9BF186-23BA-4DBB-8360-315AF8A345AF}  
{66C75B2A-B5AC-441E-9286-09DF7E0D75F2}  
{AA60D73D-F69B-42E3-9A57-150F5D3D3916}  
{FB4D8549-9627-45DA-9D94-FC0FCA6263FA}
```

ArcGIS 10.1 SP1 Web Adaptor (IIS) instance product codes

```
{D52794EA-CFED-4A35-AD48-D7B70362872E}  
{FC0598F8-DFF8-4324-9E88-8EABB2D9B855}  
{53D94675-CA80-4333-9FFF-BA9DF7AAAB01}  
{1B4C6478-0E9B-4781-AADE-EECE7923BE02}  
{2FAC39EB-E9F1-478F-BB9A-46D77920FE90}  
{9892BC97-25CC-47F8-BA52-AE616DF07393}  
{B34156D4-6941-4DCD-BF16-BA9FA11673FD}  
{4512A442-2FB4-48E7-927A-49874DB5C57B}  
{CF5D211A-6637-4B65-8E0A-B152888A4ECB}  
{8353ED1D-4DFC-4FCE-B3B8-2668009D653A}
```

ArcGIS 10.1 Web Adaptor (IIS) instance product codes

```
{F2D4A6C5-E11F-4FEF-A240-5F2BA22F6418}  
{DF32A6BA-A260-4BCD-B59A-4CEB4173B2D8}  
{0CF52969-7F17-4F85-82FF-C658F3DC5F6E}  
{8E4D5C3B-B54C-4CC5-9A5F-3EC0C6BF64F0}  
{0329B7AD-D457-42F2-B97E-BBAE26D54329}  
{38A627D7-01C7-4E3F-945D-3CD4CDF14BE5}  
{635C3AE6-F3F1-434D-B1E7-B12CE91AD83F}
```

```
{39BE94C5-8146-4560-A54E-859979624ACF}  
{1506767A-988E-44EB-A733-E5B8BFFBE81E}  
{BFA02DB7-9E55-4179-88AC-D2C1B9802096}
```

ArcGIS Web Adaptor (Java Platform) 11.0

For comprehensive information on the installation of ArcGIS Web Adaptor (Java Platform) 11.0, refer to the [installation guide](#) at the ArcGIS Resources website. For a list of supported operating systems and hardware requirements, refer to the system requirements at [ArcGIS Enterprise 11.0 System Requirements](#).

ArcGIS Web Adaptor (Java Platform) allows you to integrate your existing Java-based web server with ArcGIS Server and Portal for ArcGIS. You can use Web Adaptor solely with ArcGIS Server or Portal for ArcGIS, or you can configure Web Adaptor to work with both.

The Java platform setup is compatible with Java EE servers such as WebSphere and WebLogic.

Web Adaptor is an application that runs in your existing website and forwards requests to your ArcGIS servers. It polls your site at a regular interval to learn which machines have been added or removed. It then forwards traffic to only the currently participating machines. When you prepare to expose your ArcGIS Server site to an external audience, you should install Web Adaptor or implement comparable request forwarding and security technology.

Web Adaptor can be used in various ArcGIS Server site configurations. For example, in a site with a single ArcGIS server, you can install Web Adaptor on the same machine as the ArcGIS server or offload it to a dedicated web server. In a multiple-machine deployment, you can have one entry point into your site by installing Web Adaptor on a single web server, or you can establish redundancy at the web server tier by installing Web Adaptor on multiple web servers.

Web Adaptor is a platform independent from ArcGIS Server; therefore, the Web Adaptor instance you deploy does not have to match the operating system platform of your ArcGIS Server site. For example, if you have a site composed of Linux machines, you can deploy ArcGIS Web Adaptor (Java Platform) to work with ArcGIS Server.

The ArcGIS Web Adaptor version must always match the version of its registered ArcGIS Server site. You can have a 10.2.1 or later version of ArcGIS Web Adaptor installed alongside earlier versions of ArcGIS Web Adaptor on the same machine. For example, you can have a 10.1 SP1 version and a 11.0 version of ArcGIS Web Adaptor installed on the same web server.

Each ArcGIS Web Adaptor instance must have its own unique name; you cannot have two Web Adaptor instances with the same name on a single web server.

Setup Dependency

The ArcGIS Web Adaptor (Java Platform) 11.0 setup will only proceed if the operating system is 64 bit.

Feature Dependency

None

Product Conflict ArcGIS Web Adaptor (Java Platform) 11.0 can be installed even if any other Esri product from a previous version is installed on the client machine.

Command Line Parameters The following property can be added to the msiexec command line:

Parameter	Default Value	Case Sensitive	Required	Description
INSTALLDIR	%System Drive%\Program Files \ArcGIS\WebAdaptor11.0\java	No	No	Installation location
ACCEPTTEULA		Yes	Yes	This property is required to accept the End User License Agreement during a silent installation.
	YES			Specify ACCEPTTEULA=YES to agree to the EULA and install the software.
	No			The software will not install if you specify NO or omit this property.

Features Available None

Upgrade Starting with version 10.2.1, ArcGIS Web Adaptor can be installed side by side with other versions of ArcGIS Web Adaptor so to upgrade an earlier version of ArcGIS Web Adaptor to 11.0, you need to uninstall the earlier version and install the 11.0 setup. During the 11.0 installation, you will specify the same name as your earlier Web Adaptor version. This guarantees your Web Adaptor URL will remain identical to the earlier version.

After installing 11.0, you need to configure ArcGIS Web Adaptor with its corresponding ArcGIS Server site.

At 10.2 and earlier versions, running the setup upgraded all existing Web Adaptor instances to the latest version.

Localized Setups ArcGIS Web Adaptor (Java Platform) 11.0 setup is available in Arabic, Simplified Chinese, French, German, Italian, Japanese, Brazilian Portuguese, Russian, Spanish, and Turkish. Running setup.exe provides a fully localized installation experience. Setup.exe is a bootstrapper executable file that will run the main product setup.msi and then run the language pack setup.msi as a secondary installation.

Transforms Changing INSTALLDIR

1. In the CustomAction table, add a row and set the following values for each field:

Action: ESRI_CHANGE_INST
Type: 35
Source=INSTALLDIR
Target: c:\WebAdaptorJava (or any value)

2. In the InstallExecuteSequence table, add a row and set the following values for each field:

Action: ESRI_CHANGE_INST
Condition: Not Installed
Sequence: 1002

3. In the InstallUISequence table, add a row and set the following values for each field:

Action: ESRI_CHANGE_INST
Condition: Not Installed
Sequence: 1002

Uninstall To uninstall ArcGIS Web Adaptor, follow the steps in the sections below.

1. Unregister Web Adaptor.

First, you will need to unregister Web Adaptor with your site using ArcGIS Server Manager. To do so, follow the steps below:

- a. Open Manager and log in as a user who has administrative access to ArcGIS Server. If you need help with this step, see Logging in to Manager.
- b. Click Site > Web Adaptor.
- c. Click Unregister Web Adaptor.
- d. In the Unregister Web Adaptor dialog box, click Yes.

Note: The unregistering functionality is only available starting at ArcGIS 10.1 SP1 for Server and is required beginning at 10.1 SP1. If your ArcGIS Server and Web Adaptor product versions are out of sync, you will need to make sure the components are upgraded to the same product version before proceeding.

2. Uninstall Web Adaptor.

Use your operating system's tools to uninstall Web Adaptor.

To uninstall ArcGIS Web Adaptor (Java Platform) 11.0 silently, use the following command line:

```
msiexec.exe /x {05060E31-277F-49DA-B284-A0F16D60949A} /qb
```

To uninstall ArcGIS Web Adaptor (Java Platform) 10.9.1 silently, use the following command line:


```
msiexec.exe /x {B9138950-F155-4754-9510-678B2B523A35} /qb
```

To uninstall ArcGIS Web Adaptor (Java Platform) 10.9 silently, use the following command line:

```
msiexec.exe /x {15FB5714-9373-43BF-87C6-C18664ABF309} /qb
```

To uninstall ArcGIS Web Adaptor (Java Platform) 10.8.1 silently, use the following command line:

```
msiexec.exe /x {7B686207-6B76-4A38-97DA-29D00F42AC37} /qb
```

To uninstall ArcGIS Web Adaptor (Java Platform) 10.8 silently, use the following command line:

```
msiexec.exe /x {AD40AAC6-0368-436A-A9B8-2D4B443A8C2B} /qb
```

To uninstall ArcGIS Web Adaptor (Java Platform) 10.7.1 silently, use the following command line:

```
msiexec.exe /x {48A845A4-5730-4802-9CF0-D7AE3DA87BAF} /qb
```

To uninstall ArcGIS Web Adaptor (Java Platform) 10.7 silently, use the following command line:

```
msiexec.exe /x {2A142568-10C4-4947-A6CE-28FB3B9F964F} /qb
```

To uninstall ArcGIS Web Adaptor (Java Platform) 10.6.1 silently, use the following command line:

```
msiexec.exe /x {A0D0C945-C2A6-4106-A19E-449C60BB8D59} /qb
```

To uninstall ArcGIS Web Adaptor (Java Platform) 10.6 silently, use the following command line:

```
msiexec.exe /x {5DC6A1FB-1D21-432F-BED1-546FFB47EA33} /qb
```

To uninstall ArcGIS Web Adaptor (Java Platform) 10.5.1 silently, use the following command line:

```
msiexec.exe /x {02C091A9-1F0E-453D-B99C-12FEBB55BF8E} /qb
```

To uninstall ArcGIS Web Adaptor (Java Platform) 10.5 silently, use the following command line:

```
msiexec.exe /x {2A35F01C-9D46-4D2F-B29D-3B7AE6130958} /qb
```

To uninstall ArcGIS 10.4.1 Web Adaptor (Java Platform) silently, use the following command line:

```
msiexec.exe /x {C265BE76-9463-429F-B7D4-9C4D34E9DCC2} /qb
```

To uninstall ArcGIS 10.4 Web Adaptor (Java Platform) silently, use the following command line:

```
msiexec.exe /x {C1F0DF95-C1E2-4AF4-A4FC-223BAEAF3E} /qb
```

To uninstall ArcGIS 10.3.1 Web Adaptor (Java Platform) silently, use the following command line:

```
msiexec.exe /x {65C25345-EF47-44BD-AD25-2A626F5DD305} /qb
```

To uninstall ArcGIS 10.3 Web Adaptor (Java Platform) silently, use the following command line:

```
msiexec.exe /x {FE719171-3AED-4D9C-8DC2-FC0F1A715D62} /qb
```

To uninstall ArcGIS 10.2.2 Web Adaptor (Java Platform) silently, run this command from the command line:

```
msiexec /x {DC6E3BFB-E525-473C-A139-92AD3A0E11A4} /qb
```

To uninstall ArcGIS 10.2.1 Web Adaptor (Java Platform) silently, run this command from the command line:

```
msiexec /x {DE4AC1B6-B05A-4409-A26C-160354B72838} /qb
```

To uninstall ArcGIS 10.2 Web Adaptor (Java Platform) silently, run this command from the command line:

```
msiexec /x {D9F0D397-64A8-494B-83CF-0A71A2751AC2} /qb
```

To uninstall ArcGIS 10.1 SP1 Web Adaptor (Java Platform) silently, run this command from the command line:

```
msiexec /x {E511C26C-3028-48E8-AD83-A30B1A7BFAFC} /qb
```

To uninstall ArcGIS 10.1 Web Adaptor (Java Platform) silently, run this command from the command line:

```
msiexec /x {02013567-A06D-4B27-9CDB-4777ED7473F3} /qb
```

Once you uninstall Web Adaptor, client applications will not be able to communicate with ArcGIS Server. To reestablish this communication in the future, use the Web Adaptor configuration page to register Web Adaptor with ArcGIS Server.

ArcGIS Mission Server 11.0

ArcGIS Mission Server is an ArcGIS Enterprise server role that provides the processing necessary for communication between the components of ArcGIS Mission. The primary function of ArcGIS Mission Server is to facilitate communication between ArcGIS Mission Manager users and ArcGIS Mission Responder users. ArcGIS Mission Server is licensed through ArcGIS Enterprise and is federated with an ArcGIS Enterprise portal. Each portal can be configured to organization specifications using ArcGIS Web Adaptor. Portal administrators assign and manage users for both Manager and Responder.

ArcGIS Mission Server can be installed on its own or can be installed with other ArcGIS Enterprise 10.9 components. ArcGIS Mission Server communicates on ports 20443 and 20300. You must open these ports on your firewall before installing the software. For a list of supported operating systems and hardware requirements, refer to the system requirements at [ArcGIS Enterprise 11.0 System Requirements](#).

Setup Dependency

If the following products are not detected on the machine, setup.msi will not proceed:

- 64-bit operating system.
- Machines with an underscore (_) in their names are not supported. The ArcGIS Mission Server 11.0 setup will not proceed if an underscore is detected in the machine name.
- Microsoft Visual C++ 2015-2022 Redistributable (x64) Minimum version 14.31.31103. If the Visual C++ 2015-2022 Redistributable is not already installed, running setup.exe will install it before setup.msi is launched. Setup.msi will not install if Microsoft Visual C++ 2015-2022 Redistributable (x64) Minimum version 14.31.31103 is not already installed.

Note: ArcGIS Mission Server is not supported on domain controllers. Installing ArcGIS Mission Server on a domain controller may adversely affect functionality.

Feature Dependency

None

Command Line Parameters

The following properties can be added to the msixec command line:

Parameter	Default Value	Case Sensitive	Required	Description
INSTALLDIR	%System Drive%\Program Files\ArcGIS\Mission	No	No	ArcGIS Mission Server 11.0 installation location
USER_NAME	Local System account	Yes	No	Specify an existing domain or local account. If the specified local account does not exist, it will be created.

Parameter	Default Value	Case Sensitive	Required	Description
PASSWORD		Yes	Yes	Password for the account specified
ACCOUNT	UseConfigFile	Yes	No	If you are importing credentials from a file, set this parameter to UseConfigFile. There are no other valid values for this property.
EXPORTCONFIG		Yes	No	Exports the account information entered with the USER_NAME and PASSWORD command line parameters to an encrypted XML file
CONFIGPATH		Yes	No	Full path and name of configuration file. Used in conjunction with ACCOUNT=UseConfigFile, this property specifies the server configuration file for configuring the account. Used in conjunction with EXPORTCONFIG=Yes, this property specifies the name of the server configuration file and the location where it will be stored. The file name must end with .xml, and the specified folder must already exist.
MSA	FALSE	Yes	No	This parameter should only be used with a Managed Service Account. A Managed Service Account must already exist on your domain. Do not use this parameter with a local account or a domain account with password. A Managed Service Account will not use the PASSWORD parameter.

Parameter	Default Value	Case Sensitive	Required	Description
ACCEPTTEULA		Yes	Yes	This property is required to accept the End User License Agreement during a silent installation.
	YES			Specify ACCEPTTEULA=YES to agree to the EULA and install the software.
	No			The software will not install if you specify NO or omit this property.

Features Available None

Localized Setups Setup is available in English only.

Transforms **Changing INSTALLDIR**

1. In the CustomAction table, locate the custom action GetInstallDir.
2. The target column for this custom action is [INSTALLDIR]. Change this to the desired installation location, for example, C:\MyMissionServer\. The backslash must be included.

Uninstall To uninstall ArcGIS Mission Server 11.0 silently, use the following command line:

```
msiexec.exe /x {A0E25148-B33D-442F-9EE4-B35AEC2DEA6D} /qb
```

ArcGIS Mission Server 11.0 Help Language Pack

There is only one Language Pack setup for ArcGIS Mission Server 11.0 Help Language Pack. The ArcGIS Mission Server 11.0 Help Language Pack setup installs localized help files for all supported languages. The language-specific help shortcut will only be created for one of the specified languages included in the drop-down menu—Arabic, Chinese (Simplified Han), French, German, Italian, Japanese, Korean, Polish, Portuguese (Brazil), Russian, and Spanish. To change the shortcut language, uninstall the ArcGIS Mission Server 11.0 Help Language Pack, install it again, and choose another language.

If you run Setup.exe for ArcGIS Mission Server 11.0, the ArcGIS Mission Server 11.0 Help Language Pack setup will not be installed automatically. It must be installed separately.

Setup Dependency ArcGIS Mission Server 11.0 must be installed on the machine.

Feature Dependency None

Command Line Parameters The following property can be added to the msiexec command line:

Parameter	Default Value	Case Sensitive	Required	Description
ST_LANGUAGE	ar	Yes	No	Shortcut Language. The other languages that can be specified at the command prompt are given in the table below.

Language	Language Code
Arabic	ar
Chinese (Simplified Han)	zh-CN
French	fr
German	de
Italian	it
Japanese	ja
Korean	ko
Polish	pl
Portuguese (Brazil)	pt-BR
Russian	ru
Spanish	es

Features Available None

Transforms **Changing INSTALLDIR**

ArcGIS Mission Server 11.0 Help Language Pack installs to the Installation directory of ArcGIS Mission Server 11.0. It is not possible to change this with a transform.

Uninstall To uninstall ArcGIS Mission Server 11.0 Help Language Pack silently, use the following command line:

```
msiexec.exe /x {B18F5EE7-FD97-4DCA-9BC9-641059340F79} /qb
```

ArcGIS Notebook Server 11.0

ArcGIS Notebook Server is an ArcGIS Server role licensed and configured for the purpose of hosting ArcGIS Notebooks. The server role uses Docker containers to host and run notebooks, and provides an isolated and secure environment for the notebooks without interfering with operations of the host operating system. For a list of supported operating systems and hardware requirements, refer to the system requirements at [ArcGIS Enterprise 11.0 System Requirements](#).

ArcGIS Notebook Server communicates on port 11443. You will need to open this port on your firewall before installing the software. To communicate with the ArcGIS Enterprise portal with which it is federated, ArcGIS Notebook Server needs access to port 7443 on the portal machine.

Setup Dependency ■ 64-bit operating system.

- Machines with an underscore (_) in their names are not supported. The setup will not proceed if an underscore is detected in the machine name.
- Microsoft Visual C++ 2015-2022 Redistributable (x64) Minimum version 14.31.31103. If the Visual C++ 2015-2022 Redistributable is not already installed, running setup.exe will install it before setup.msi is launched. Setup.msi will not install if Microsoft Visual C++ 2015-2022 Redistributable (x64) Minimum version 14.31.31103 is not already installed.
- The following 64-bit operating systems satisfy the minimum operating system requirements. Support is not provided for 32-bit operating systems; the setup will only proceed if the operating system is 64 bit. Windows 10 is supported for basic testing and application development use only. It is not recommended for deployment in a production environment.
 - Windows Server 2016 Standard and higher
 - Windows Server 2019
 - Windows 10 Pro and Enterprise

Note: ArcGIS Notebook Server is not supported on domain controllers. Installing ArcGIS Notebook Server on a domain controller may adversely affect functionality.

Feature Dependency None

Command Line Parameters The following property can be added to the msixexec command line:

Parameter	Default Value	Case Sensitive	Required	Description
INSTALLDIR	%System Drive%\Program Files\ ArcGIS\ NotebookServer	No	No	Default installation location
USER_NAME	Local System account	Yes	No	Specify an existing domain or local account. If the specified local account does not exist, it will be created.
PASSWORD		Yes	Yes	Password for the account specified
ACCOUNT	UseConfigFile	Yes	No	If you are importing credentials from a file, set this parameter to UseConfigFile. There are no other valid values for this property.
EXPORTCONFIG	No	Yes	No	Exports the account information entered with the USER_NAME and PASSWORD command line parameters to an encrypted XML file

Parameter	Default Value	Case Sensitive	Required	Description
CONFIGPATH		Yes	No	Full path and name of server configuration file. Used in conjunction with ACCOUNT=UseConfigFile, this property specifies the server configuration file for configuring the ArcGIS Server 11.0 account. Used in conjunction with EXPORTCONFIG=Yes, this property specifies the name of the server configuration file and the location where it will be stored. The file name must end with .xml, and the specified folder must already exist.
MSA	FALSE	Yes	No	This parameter should only be used with a Managed Service Account. A Managed Service Account must already exist on your domain. Do not use this parameter with a local account or a domain account with password. A Managed Service Account will not use the PASSWORD parameter.
ACCEPTTEULA		Yes	Yes	This property is required to accept the End User License Agreement during a silent installation.
	YES			Specify ACCEPTTEULA=YES to agree to the EULA and install the software.
	No			The software will not install if you specify NO or omit this property.

Features Available The following features are available for installation. The setup can be modified to install only specific features by appending the ADDLOCAL parameter to the msiexec command line.

Feature	Feature Parent	Title	Description
Notebook		Notebook	ArcGIS Notebook Server

Localized Setups Setup is available in English only.

Transforms Changing INSTALLDIR

1. In the CustomAction table, locate the custom action GetInstallDir.
2. The target column for this custom action is [INSTALLDIR]. Change this to the desired installation location, for example, C:\MyNoteBookServer\. The backslash must be included.

Uninstall To uninstall ArcGIS Notebook Server 11.0 silently, use the following command line:

```
msiexec.exe /x {62777D3B-5F08-4945-8EA2-C2B518D88AEA} /qb
```

ArcGIS Notebook Server 11.0 Help Language Pack

There is only one Language Pack setup for ArcGIS Notebook Server 11.0 Help Language Pack. The ArcGIS Notebook Server 11.0 Help Language Pack setup installs localized help files for all supported languages. The language-specific help shortcut will only be created for one of the specified languages included in the drop-down menu—Arabic, Chinese (Simplified Han), French, German, Italian, Japanese, Korean, Polish, Portuguese (Brazil), Russian, and Spanish. To change the shortcut language, uninstall the ArcGIS Notebook Server 11.0 Help Language Pack, install it again, and choose another language.

If you run Setup.exe for ArcGIS Notebook Server 11.0, the ArcGIS Notebook Server 11.0 Help Language Pack setup will not be installed automatically. It must be installed separately.

Setup Dependency ArcGIS Notebook Server 11.0 must be installed on the machine.

Feature Dependency None

Command Line Parameters The following property can be added to the msiexec command line:

Parameter	Default Value	Case Sensitive	Required	Description
ST_LANGUAGE	ar	Yes	No	Shortcut Language. The other languages that can be specified at the command prompt are given in the table below.

Language	Language Code
Arabic	ar
Chinese (Simplified Han)	zh-CN
French	fr
German	de
Italian	it
Japanese	ja
Korean	ko
Polish	pl
Portuguese (Brazil)	pt-BR
Russian	ru
Spanish	es

Features Available None

Transforms **Changing INSTALLDIR**

ArcGIS Notebook Server 11.0 Help Language Pack installs to the Installation directory of ArcGIS Notebook Server 11.0. It is not possible to change this with a transform.

Uninstall To uninstall ArcGIS Notebook Server 11.0 Help Language Pack silently, use the following command line:

```
msiexec.exe /x {F70BC643-BCF3-4689-932D-0973B2A2C053} /qb
```

ArcGIS Notebook Server Samples Data ArcGIS Notebook Server Samples notebooks illustrate the range of capabilities and applications available in ArcGIS Notebook Server. For a list of supported operating systems and hardware requirements, refer to the system requirements at [ArcGIS Enterprise 11.0 System Requirements](#).

Setup Dependency ArcGIS Notebook Server 11.0 must be installed on the machine.

Feature Dependency None

Command Line Parameters None

Features Available None

Localized Setups Setup is available in English only.

Transforms **Changing INSTALLDIR**

ArcGIS Notebook Server Samples Data installs to the Installation directory of ArcGIS Notebook Server 11.0. It is not possible to change this with a transform.

Uninstall To uninstall ArcGIS Notebook Server Samples Data silently, use the following command line:

```
msiexec.exe /x {2F9BC4EA-B2D9-43C6-98CA-06A9DDFB6A63} /qb
```

GeoEnrichment Server For a list of supported operating systems and hardware requirements, refer to the system requirements at [ArcGIS Enterprise 11.0 System Requirements](#).

Setup Dependency ■ 64-bit operating system.

Feature Dependency None

The following property can be added to the msiexec command line:

Command Line Parameters

Parameter	Default Value	Case Sensitive	Required	Description
INSTALLDIR	%System Drive%\Program Files\ArcGIS\GeoEnrichment	No	No	Default installation location
USER_NAME	Local System account	Yes	No	Specify an existing domain or local account. If the specified local account does not exist, it will be created.
PASSWORD		Yes	Yes	Password for the account specified
ACCOUNT	UseConfigFile	Yes	No	If you are importing credentials from a file, set this parameter to UseConfigFile. There are no other valid values for this property.
EXPORTCONFIG		Yes	No	Exports the account information entered with the USER_NAME and PASSWORD command line parameters to an encrypted XML file
CONFIGPATH		Yes	No	Full path and name of configuration file. Used in conjunction with ACCOUNT=UseConfigFile, this property specifies the configuration file for configuring the account. Used in conjunction with EXPORTCONFIG=Yes, this property specifies the name of the configuration file and the location where it will be stored. The file name must end with .xml, and the specified folder must already exist.
MSA	FALSE	Yes	No	This parameter should only be used with a Managed Service Account. A Managed Service Account must already exist on your domain. Do not use this parameter with a local account or a domain account with password. A Managed Service Account will not use the PASSWORD parameter.

Features Available None

Localized Setups Setup is available in English only.

Transforms **Changing INSTALLDIR**

1. In the CustomAction table, locate the custom action GetInstallDir.
2. The target column for this custom action is [INSTALLDIR]. Change this to the desired installation location, for example, C:\MyGeoEnrichment\. The backslash must be included.

Uninstall To uninstall GeoEnrichment Server silently, use the following command line:

```
msiexec.exe /x {C79C2F95-9E23-42B4-BC9F-75D0B30B33FF} /qb
```

ArcGIS Enterprise Cloud Builder 11.0 for AWS

ArcGIS Enterprise Cloud Builder for Amazon Web Services includes a graphical user interface application and the ArcGIS Enterprise Cloud Builder Command Line Interface for Amazon Web Services utility, which allows you to automate cloud deployments of ArcGIS Enterprise.

Setup Dependency

- 64-bit operating system.
- Microsoft .NET Framework 4.8 or higher.
- Microsoft Visual C++ 2015-2022 Redistributable (x64) Minimum version 14.31.31103. If the Visual C++ 2015-2022 Redistributable is not already installed, running setup.exe will install it before setup.msi is launched. Setup.msi will not install if Microsoft Visual C++ 2015-2022 Redistributable (x64) Minimum version 14.31.31103 is not already installed.

Feature Dependency

None

Command Line Parameters

The following property can be added to the msiexec command line:

Parameter	Default Value	Case Sensitive	Required	Description
INSTALLDIR	%System Drive%\Program Files\ArcGIS\CloudBuilder11.0	No	No	Default installation location
ACCEPTTEULA		Yes	Yes	This property is required to accept the End User License Agreement during a silent installation.
	YES			Specify ACCEPTTEULA=YES to agree to the EULA and install the software.

Parameter	Default Value	Case Sensitive	Required	Description
	No			The software will not install if you specify NO or omit this property.

Features Available None

Localized Setups Setup is available in English only.

Transforms **Changing INSTALLDIR**

1. In the CustomAction table, locate the custom action GetInstallDir.
2. The target column for this custom action is [INSTALLDIR]. Change this to the desired installation location, for example, C:\MyAWS\. The backslash must be included.

Uninstall To uninstall Portal for ArcGIS Enterprise Cloud Builder 11.0 for AWS silently, use the following command line:

```
msiexec.exe /x {956A26D8-6C21-44C8-93B3-9884264B7ED7} /qb
```

ArcGIS Enterprise SDK The ArcGIS Enterprise Software Development Kit (SDK) allows developers to extend the functionality of ArcGIS Server map services published via ArcGIS Pro. The Enterprise SDK is designed to be complementary with the ArcObjects SDK and can co-exist with the ArcObjects SDK on a machine. Developers who are writing SOEs and SOIs for services published from ArcMap should use the ArcObjects SDK. If you are developing any other type of SOE and SOI, such as those for services published from ArcGIS Pro, use the ArcGIS Enterprise SDK.

The APIs for the ArcObjects SDK and Enterprise SDKs have similarities but are distinct and different APIs. For a list of supported operating systems and hardware requirements, refer to the system requirements at [ArcGIS Enterprise 11.0 System Requirements](#).

Setup Dependency None

Feature Dependency ■ Visual Studio 2022—This feature requires VS2022 Community, Professional, Premium, or Ultimate edition.

Command Line Parameters The following property can be added to the msiexec command line:

Parameter	Default Value	Case Sensitive	Required	Description
INSTALLDIR	%System Drive%\Program Files\ArcGIS\ EnterpriseSDK	No	No	Default installation location

Features Available The following features are available for installation. The setup can be modified to install only specific features by appending the ADDLOCAL parameter to the msiexec command line.

Feature	Feature Parent	Title	Description
Java		Java (with Eclipse plugin)	This feature installs help, samples, and tools for Java developers. It also installs plugin for Eclipse IDE.
VS2022Community		Visual Studio 2022 Community Edition	This feature installs help, samples, and tools for .Net developers using Visual Studio 2022.
VS2022Enterprise		Visual Studio 2022 Enterprise Edition	This feature installs help, samples, and tools for .Net developers using Visual Studio 2022.
VS2022Professional		Visual Studio 2022 Professional Edition	This feature installs help, samples, and tools for .Net developers using Visual Studio 2022.

Localized Setups Setup is available in English only.

Transforms **Changing INSTALLDIR**

1. In the CustomAction table, locate the custom action GetInstallDir.
2. The target column for this custom action is [INSTALLDIR]. Change this to the desired installation location, for example, C:\MyEnterpriseSDK\. The backslash must be included.

Uninstall To uninstall ArcGIS Enterprise SDK silently, use the following command line:

```
msiexec.exe /x {C023A50E-6256-41C2-B000-7B53B718F269} /qb
```

Deep Learning Libraries for ArcGIS Server 11.0 Deep Learning Libraries for ArcGIS Server 11.0 includes a broad collection of components, such as PyTorch, TensorFlow, Fast.ai and scikit-learn, for performing deep learning and machine learning tasks. For a list of supported operating systems and hardware requirements, refer to the system requirements at [GitHub](#).

Setup Dependency ArcGIS Server 11.0 must be installed on the machine.

Feature Dependency None

Command Line Parameters None

Features Available None

Localized Setups Setup is available in English only.

Transforms **Changing INSTALLDIR**

Deep Learning Libraries for ArcGIS Server 11.0 installs to the Installation directory of ArcGIS Server 11.0. It is not possible to change this with a transform.

Uninstall To uninstall Deep Learning Libraries for ArcGIS Server 11.0 silently, use the following command line:

```
msiexec.exe /x {23FC1804-7B41-4271-8734-8C78C9B8CEF9} /qb
```

ArcGIS Data Interoperability 11.0 for Server

The Data Interoperability extension for ArcGIS Server enables you to publish map services that contain interoperability data formats and publish Data Interoperability tools you have authored in ArcGIS Desktop as geoprocessing services. For a list of supported operating systems and hardware requirements, refer to the system requirements at [ArcGIS Enterprise 11.0 System Requirements](#).

Setup Dependency If the following product is not detected on the machine, setup will not proceed:

ArcGIS Server 11.0

Feature Dependency None

Command Line Parameters

The following property can be added to the msiexec command line:

Parameter	Default Value	Case Sensitive	Required	Description
INSTALLDIR	%System Drive%\Program Files\ESRI\Data Interoperability Extension\Data Interoperability	No	No	Default installation location

Features Available None

Localized Setups Setup is available in English only.

Transforms **Changing INSTALLDIR**

1. In the CustomAction table, locate the custom action GetInstallDir.
2. The target column for this custom action is [INSTALLDIR]. Change this to the desired installation location, for example, C:\MyDataInteroperability\. The backslash must be included.

Uninstall To uninstall ArcGIS Data Interoperability 11.0 for Server silently, use the following command line:

```
msiexec.exe /x {338D8E88-3791-4578-A9DC-82D83CF0806B} /qb
```

ArcGIS Coordinate Systems Data (11.0) It installs the data files required for the GEOCON transformation method and vertical transformation files for the United States (VERTCON and GEOID12B) and the world (EGM2008). For a list of supported operating systems and hardware requirements, refer to the [system requirements](#).

Setup Dependency None

Feature Dependency None

Command Line Parameters The following property can be added to the msiexec command line:

Parameter	Default Value	Case Sensitive	Required	Description
INSTALLDIR	%System Drive%\Program Files \ArcGIS\CoordinateSystemsData	No	No	Default installation location

Features Available The following features are available for installation. The setup can be modified to install only specific features by appending the ADDLOCAL parameter to the msiexec command line.

Feature	Feature Parent	Title	Description
CoordinateSystemsData		Coordinate Systems Data	Coordinate Systems Data
NorthAmericaGEOCON	CoordinateSystem sData	North America GEOCON	This feature contains grid files that convert between NAD 1983 (NSRS2007) and NAD 1983 (2011).
Vertical	CoordinateSystem sData	Vertical	This feature contains files for US GEOID12B and VERTCON, the world EGM84 and 2.5' by 2.5' EGM2008 geoid models, and other countries.
NADCON	CoordinateSystem sData	NADCON	This feature contains grid files that use the NADCON method.
NADCON5	CoordinateSystem sData	NADCON5	This feature contains grid files that use the NADCON5 method.

NTv2	CoordinateSystem sData	NTv2	Geographic transformation files needed by the NTV2 method.
VerticalWorld	CoordinateSystem sData	Vertical World 1x1	This feature contains the EGM2008 1' x 1' world geoid model file.

Localized Setups Setup is available in English only.

Transforms **Changing INSTALLDIR**

1. In the CustomAction table, locate the custom action GetInstallDir.
2. The target column for this custom action is [INSTALLDIR]. Change this to the desired installation location, for example, C:\MyCoordinateSystemsData\. The backslash must be included.

Uninstall To uninstall ArcGIS Coordinate Systems Data silently, use the following command line:

```
msiexec.exe /x {C338A9BB-6D4C-4033-B78B-803D53B73F63} /qb
```

ArcGIS Earth ArcGIS Earth provides a lightweight, easy-to-use interface for immersible 3D that complements the capabilities of ArcGIS Pro and the 3D Scene Viewer with a focused experience for working with geospatial data on the globe. ArcGIS Earth allows anyone in the enterprise to quickly view 3D maps over the Internet or behind a firewall. For comprehensive information on the installation of ArcGIS Earth, refer to the [installation guide](#) at the ArcGIS Resources website. For a list of supported operating systems and hardware requirements, refer to System Requirements at [ArcGIS Earth System Requirements](#).

ArcGIS Earth can be installed on the same machine as other ArcGIS Desktop releases or on a machine without any Esri products.

ArcGIS Earth setups can be deployed to a user or computer. Use the following criteria to decide what option to choose:

- If all users on the computer need to use ArcGIS Earth, then assign to computer.
- If only a particular user needs it, then assign to user.

Setup Dependency None

- For ArcGIS Earth to be installed per user on supported Windows Server operating systems, the registry key HKEY_LOCAL_MACHINE\SOFTWARE\Policies\Microsoft\Windows\Installer must contain the REG_DWORD data type DisableMSI, with a value of 0. For more information, see MSDN's topic, [DisableMSI](#).

Feature Dependency There are no feature dependencies.

Properties The following properties can be added to the msisexec command line:

Parameter	Value	Case Sensitive	Required	Description
INSTALLDIR	%System Drive%\Program Files\Earth in the case of a per machine installation and %System Drive%\%USERPROFILE%\AppData\Local\Programs\Earth in the case of a current user	No	No	ArcGIS Earth installation location
ALLUSERS	1	No	No	Defines the installation context of the setup. ALLUSERS=1 specifies a per machine installation. If a user without administrative privileges attempts to set this to 1, the installation will fail.
	2	No	No	ALLUSERS=2 specifies a per user installation. If this parameter is not specified, the silent installation defaults to per user.
MSIINSTALLPERUSER	1	No	No	To do a per user installation, specify both ALLUSERS=2 and MSIINSTALLPERUSER=1. This property is ignored if ALLUSERS=1 is specified.
CONFIGFILE	UseConfigFile	Yes	No	If importing a configuration file, specify "CONFIGFILE=UseConfigFile" at the command line. There are no other valid values for this property.

Parameter	Value	Case Sensitive	Required	Description
CONFIGPATH	<Path to Config File>	Yes	No	Used in conjunction with CONFIGFILE=UseConfigFile, this property allows you to specify an ArcGIS Earth configuration file to be installed to <InstallDir>\Earth\bin. Note that the file you select will be renamed in the bin directory as config.xml. The CONFIGPATH property must contain the full path to and name of the configuration file.
ACCEPTTEULA		Yes	Yes	This property is required to accept the End User License Agreement during a silent installation.
	YES			Specify ACCEPTTEULA=YES to agree to the EULA and install the software.
	No			The software will not install if you specify NO or omit this property.

To install to per machine with a config file, use the following command line:

```
msiexec.exe /i <setup location>\ArcGISEarth.msi /qb ALLUSERS=1 CONFIGFILE=UseConfigFile
CONFIGPATH=\\networkmachine\earthconfigs\config.xml
```

To install to per user, use the following command line:

```
msiexec.exe /i <setup location>\ArcGISEarth.msi /qb ALLUSERS=2 MSIINSTALLPERUSER=1
```

If ALLUSERS and MSIINSTALLPERUSER are not specified on the command line for a silent installation, it will default to per user installation.

Features Available None

Localized Setups ArcGIS Earth setup is available in Japanese, Polish and Russian. Running setup.exe provides a fully localized installation experience.

Transforms **Changing INSTALLDIR**

For per machine installation

1. In the CustomAction table, add a new row with the following values:

Action: SetInstallDir
Type: 51
Source: INSTALLDIR
Target: c:\MyEarth

2. In the InstallExecuteSequence table, add a new row with the following values:

Action: SetInstallDir
Sequence: 965

For per user installation

1. In the CustomAction table, add a new row with the following values:

Action: SetInstallDir
Type: 51
Source: INSTALLDIR
Target: [TempFolder]MyEarth

2. In the InstallExecuteSequence table, add a new row with the following values:

Action: SetInstallDir
Sequence: 965

3. In the Property table, change the following properties:

ALLUSERS=1
MSIINSTALLPERUSER=""

Uninstall To uninstall ArcGIS Earth silently, use the following command line:

```
msiexec.exe /x {643AA6D3-E312-4C85-A53B-5ED4A67C90D8} /qb
```

Summary Successful enterprise deployment requires good planning and implementation of your system environment. To successfully deploy a Windows Installer package, you should have a solid, in-depth understanding of your chosen enterprise deployment tool. This technical paper does not attempt to introduce or educate you on the usage of SMS, SCCM, or Group Policy. For more information on Windows Installer, transform files, .msp files, SMS, SCCM, Group Policy, or Active Directory, see www.microsoft.com.



Esri, the global market leader in geographic information system (GIS) software, offers the most powerful mapping and spatial analytics technology available.

Since 1969, Esri has helped customers unlock the full potential of data to improve operational and business results. Today, Esri software is deployed in more than 350,000 organizations including the world's largest cities, most national governments, 75 percent of Fortune 500 companies, and more than 7,000 colleges and universities. Esri engineers the most advanced solutions for digital transformation, the Internet of Things (IoT), and location analytics to inform the most authoritative maps in the world.

Visit us at esri.com.



Contact Esri

380 New York Street
Redlands, California 92373-8100 USA

1 800 447 9778
T 909 793 2853
F 909 793 5953
info@esri.com
esri.com

Offices worldwide
esri.com/locations