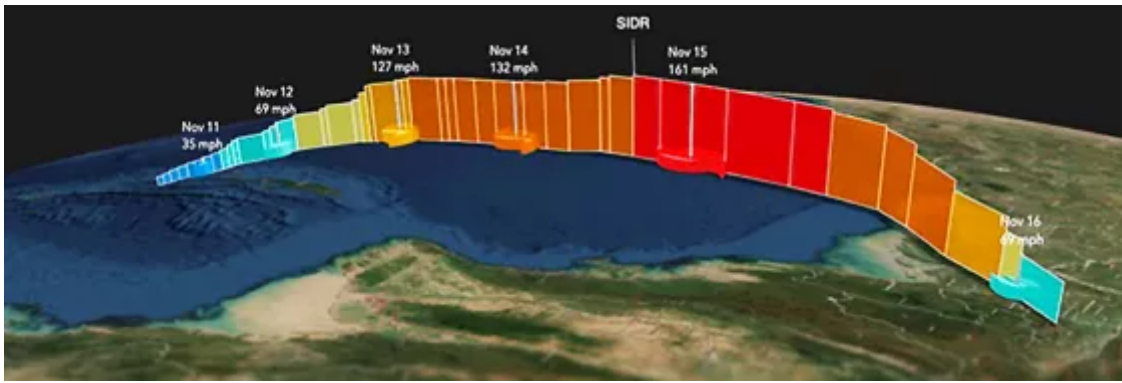




Understanding the Operational Environment

Preparing intelligence of the battlespace is a key function in the military decision-making process. It includes analyzing the enemy, terrain, weather, and civil considerations for an understanding of the operational environment and for planning a relevant course of action (COA) to support the warfighter. Even though parts of the environment can be static, the majority of conditions are dynamic; therefore we need to integrate the data at speed to collaborate on joint information products that provide intelligence at near real time.

[See More →](#)



Accessing ArcGIS Pro securely using Azure Stack Hub

Many ArcGIS Pro workloads must remain behind corporate or organizational firewalls. This is due to a variety of reasons, but the bottom line is that the processing and data must remain on-premises. Azure Stack Hub allows for the deployment of Azure infrastructure within on-premises environments. This blog post will answer questions on how well Azure Stack Hub supports ArcGIS Pro.

[Read More](#)



NextTech: Drones, 3D Buildings, and Construction Monitoring

Governments around the world expect to spend trillions on infrastructure projects in the next decade. The construction industry stands to benefit, but it needs a major productivity boost to handle the work. To achieve those gains, business leaders are turning to advances in geospatial technology, drone-based imagery, and building modeling—the kind of [cutting-edge digital tools](#) industries across the board employ to accelerate efficiency and productivity.

[Read More](#)

Esri Defense and Intelligence Forum Highlight

Interview

Keynote interview between Vice Admiral Robert B. Murrett, USN (ret.), and Vice Admiral Robert Sharp, USN. during the Esri Defense and Intelligence Forum 2020.



New Demonstrations

Enabling Installation Facility Managers with Focused Web Apps

Successful defense organizations have transformed how they work by leveraging the power of GIS, and bring together the richness of ArcGIS data visualization, management, and analysis to move from purely a system of record to also systems of insight and leader engagement to enhance their critical work. But this rich condition-assessment data can introduce complexity for decision-makers on a defense installation.

[Watch Now](#)

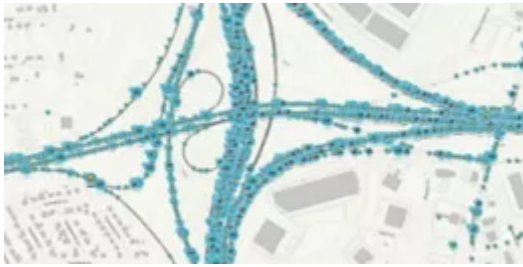
Spatial Thinking for Leaders

Data literacy requires that senior leaders and decision-makers be expected to consume data—primarily geospatial data—in new and meaningful ways. Most recently, data literacy has proved vital in the COVID-19 pandemic, as the need for advanced trend analysis and improved site selection has become increasingly apparent. ArcGIS Pro and the new voxel layers allow users to turn raw data into useful visualizations while also showing how cumulative case counts have changed over space and time.

[Watch Now](#)



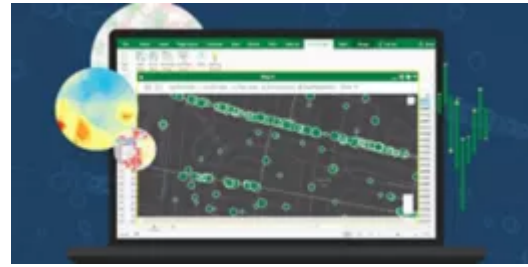
ArcGIS Capabilities & Tools



Working with Waze data in ArcGIS Velocity

Many local governments and municipalities use Waze data for crowdsourced reports on traffic jams, road hazards, crashes, and other issues. This data provides situational awareness, helping these organizations quickly respond to incidents, understand patterns of transit flow, and improve motorist safety.

[Read More](#)



Invigorate Your PowerPoint Slide Shows with ArcGIS Maps for Office

ArcGIS Maps for Office is a free add-on that works with your existing ArcGIS subscription to bring the power of GIS into Microsoft Office. You may have known that ArcGIS Maps for Office lets you geoenable your spreadsheet data and create maps directly in Excel. But did you know that you can also use Maps for Office to embed maps in your PowerPoint presentations?

[Learn More](#)

Experience nFrames and SURE for ArcGIS



ArcGIS technology provides tools for all stages of imagery workflows. Discover the newest in imagery management, analysis, visualization and exploitation, and map production. Experience the power of this technology.

[Experience SURE →](#)

Defense and Intel Events

[FedGIS: GIS-Interconnecting](#)

Stay Connected

[Esri National Government Twitter](#)

National Government

Virtual

February 22-24, 2021

Esri Developer Summit

Virtual

March 9-11, 2021

National Government Webinar Series

Webinars

Year-round

[@EsriFederalGovt](#)

Esri Defense and Intel Community

[GeoNet](#)

Connect with Jeff Dawley, Intelligence
Business Development Director at Esri

[On LinkedIn](#)

Connect with John Tully, Defense
Business Development Director at Esri

[On LinkedIn](#)

[Esri.com](#) | [Privacy](#) | [Contact Us](#)

Copyright © 2021 Esri. All rights reserved.

Esri, 380 New York Street, Redlands, CA 92373, USA.

