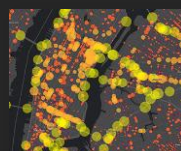
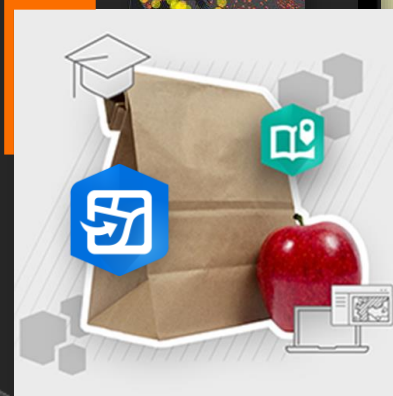


Introducing ArcGIS Field Maps

Jeff Shaner



Field Operations | Focused apps for each activity...



Field Operations | ArcGIS Field Maps



Specialized Apps

- ArcGIS Survey123
- ArcGIS QuickCapture
- ArcGIS Mission Responder
- ArcGIS Indoors
- ArcGIS Earth



ArcGIS Field Maps | One app

5 key capabilities in one app

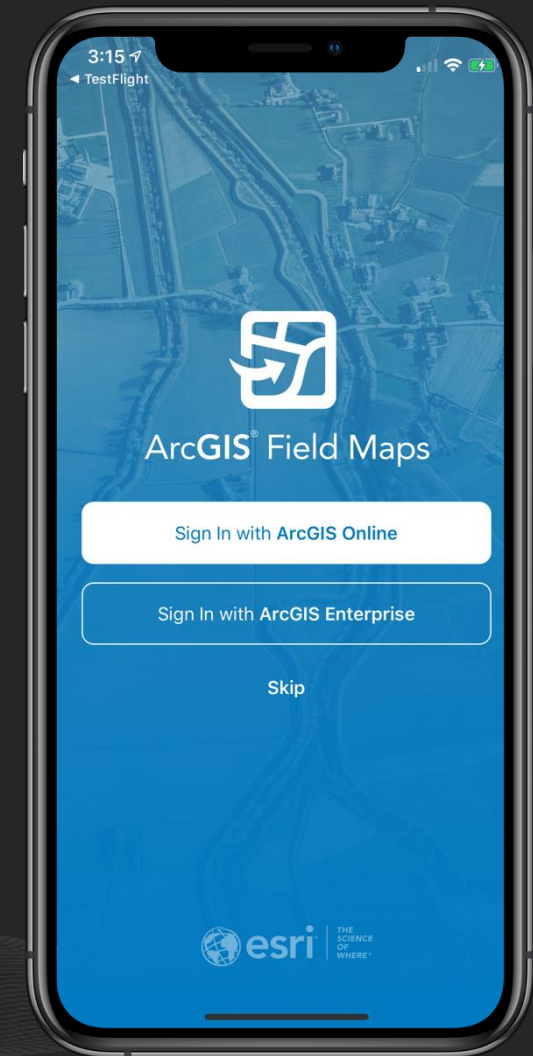
1. Map Viewing
2. Map Markup
3. Data Collection
4. Asset Inspection
5. Location Tracking



ArcGIS Field Maps | Mobile app

December 2020 Release

- Map viewing
 - View rich cartographic maps, update in real-time
 - Search location, addresses, features
 - Support for **Indoor maps**
- Map markup
 - Notes, **freehand sketch**, markers
 - Share peer-to-peer, by email, to organization
- High accuracy data collection
 - Capture point, line, area features
 - Use external **GPS or Map**
- Robust **smart form** editing for inspections
 - Simplified form management, conditional visibility, required fields
- View, record and share **location tracks**
 - Apple watch support, track for duration



Field Maps requires iOS 13.5, Android 8 (API 26)

ArcGIS Field Maps | Mobile app

Mapping capabilities

Map Support

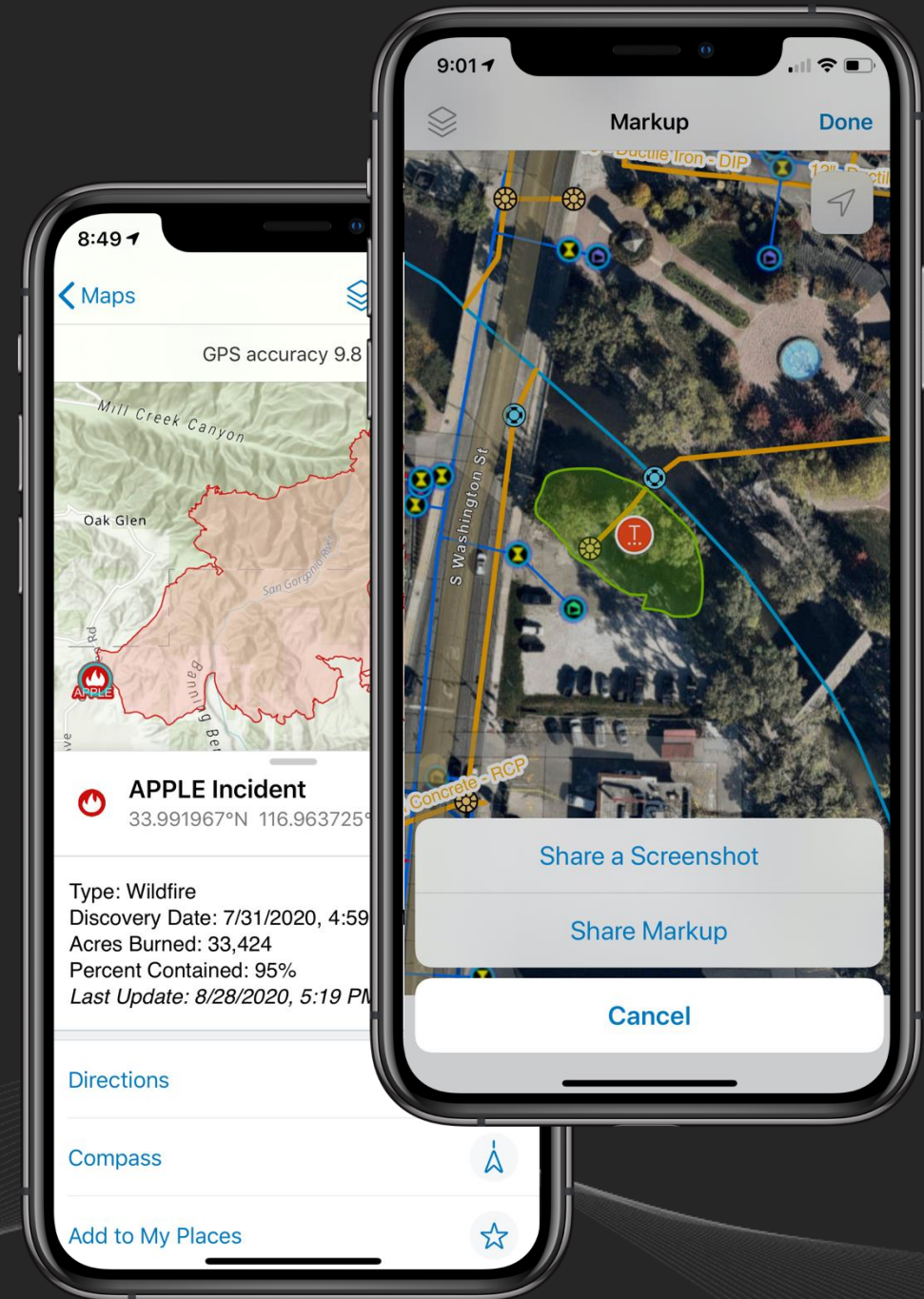
- Advanced symbology/Labeling (w/Arcade)
- **Group layers**, Annotation
- Popups (w/Arcade including **feature sets**)
- Layer refresh for auto-updates

Map Tools

- GPS, Basemaps, Bookmarks, Layers, Legend
- Measure, Search
- Download, Sync
- Directions, **Compass**

Markup and Share Map

- Place a marker
- Freehand sketch lines and areas
- Recognize **shapes**



ArcGIS Field Maps | Mobile app

Data collection capabilities

- GPS Capture capabilities
 - Single Point/vertex capture (w/ **Z-value**)
 - Streaming data capture (lines/areas)
 - **Averaging**
- Understanding Accuracy
 - GPS bar
 - GPS **metadata**
 - Required accuracy
 - Confidence level
- Connecting to Receiver
 - **Location Provider**
 - Location Profile

Accuracy

Distance (centimeters) 5

Set required location accuracy for data collection.

Centimeters ✓

Meters

95% Confidence

Report horizontal and vertical accuracy at a higher confidence level.

GPS Details

Updated Just Now

Provider	R2, 5544S01871: Trimble
Altitude (HAE)	1,183.9 ft
Horizontal Accuracy (RMS)	0.6 in
Vertical Accuracy (RMS)	1 in
Fix Type	RTK Fixed
Station ID	--
Correction Age	1 sec
Satellites (Used/Visible)	13/31
Current Location Profile	Esri base station
Correction Source	NTRIP
Battery	52 %

Streaming

Time

Distance ✓

Distance (meters) 3

Set how often to collect a new point while streaming.

GPS Averaging

Points to Average 5

Set the number of points you would like to average. Minimum number of points is 2.

Add Provider

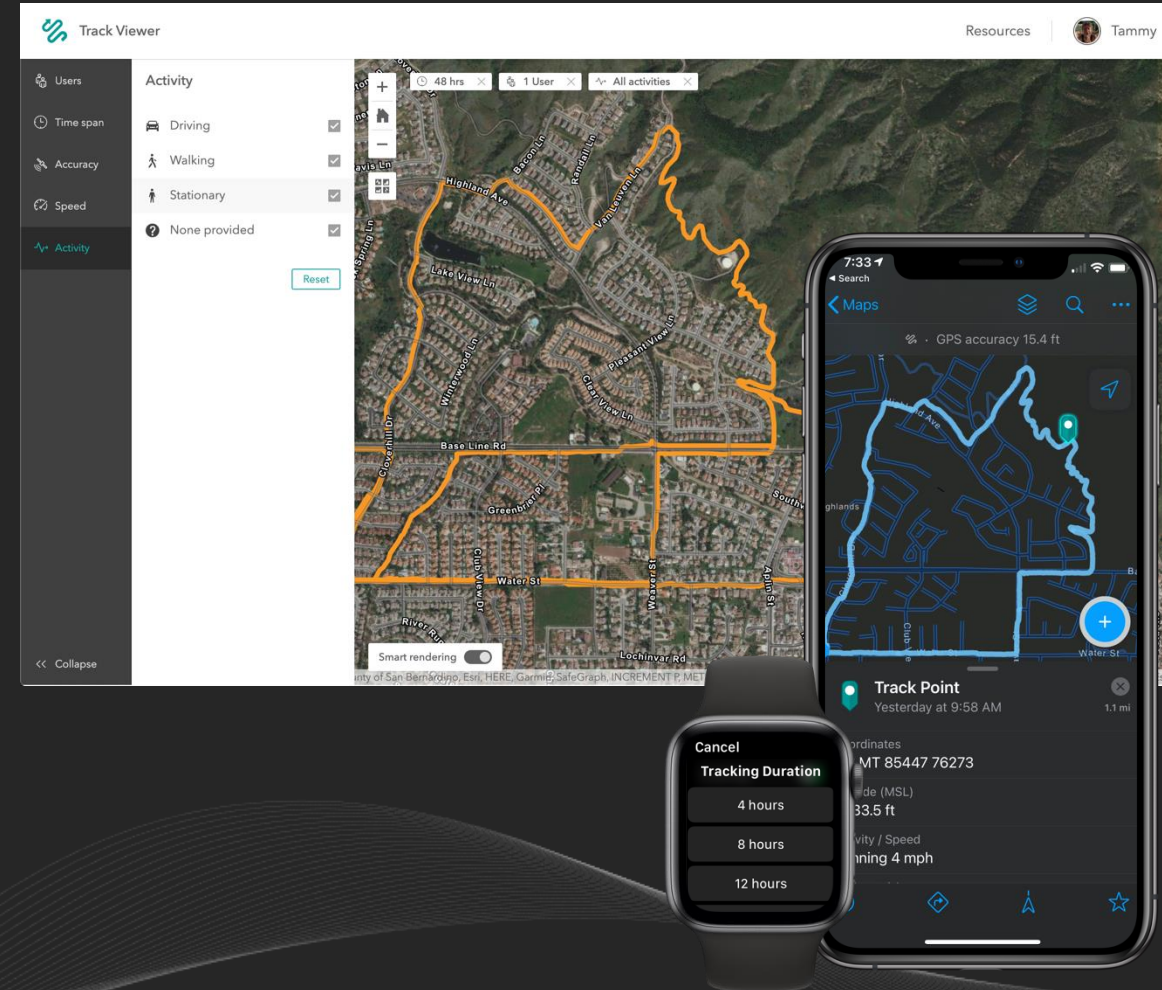
Bad Elf #145285 [Add](#)

To pair a new receiver to your device, go to Bluetooth Settings.

ArcGIS Field Maps | Mobile app

Location Tracking capabilities

- Supports **Viewer** user type + ArcGIS Tracker license
- Battery savings location tracking capability, driven by **activity**
- Switch tracking on/off for all maps from maps screen or within a map
 - Track for a **duration**
- View location tracks in any map (iOS/Android)
 - Turn tracks layer on/off
 - Set track duration
- Supported on Apple Watch
- Use **Track Viewer** to share tracks with others



ArcGIS Field Maps | Web app

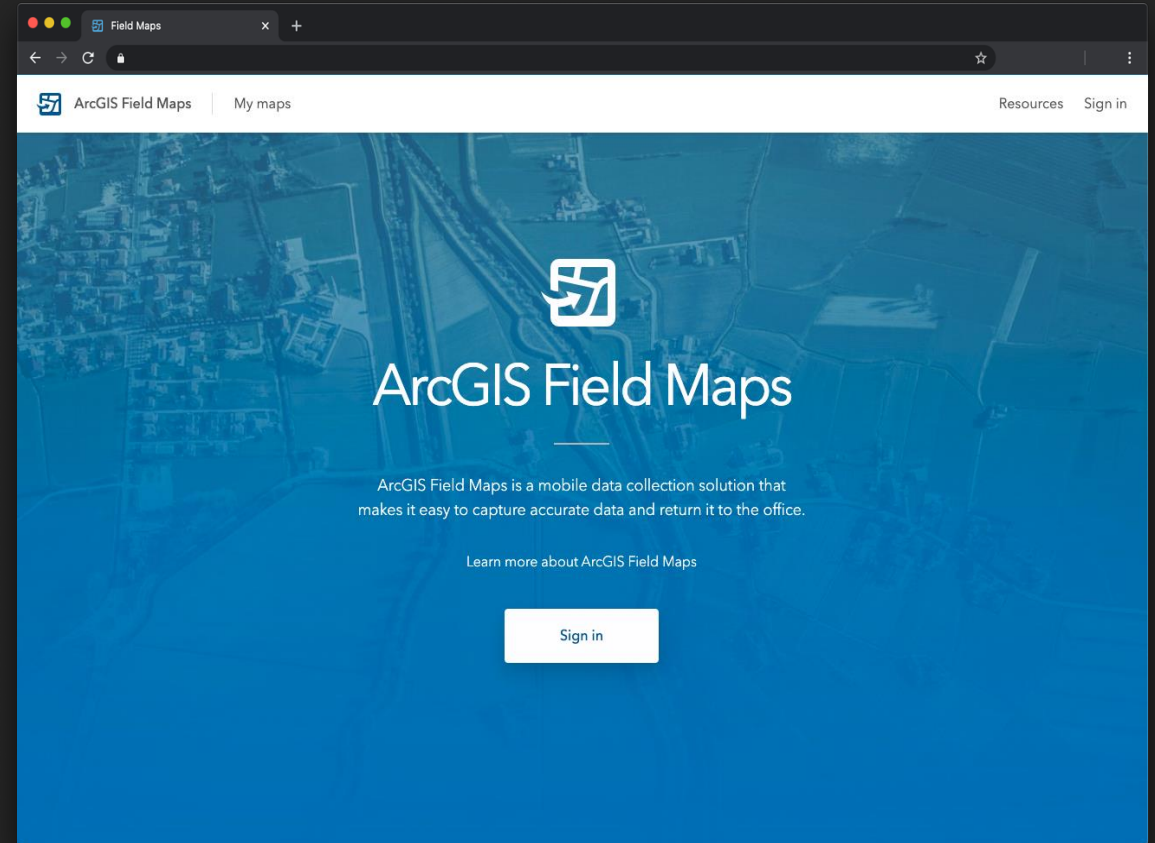
December 2020 Release

Capabilities

- Configure **map visibility** and **properties**
- Configure **map content**
- Manage **offline** experience
- **Share** maps into groups

Requirements

- ArcGIS Online or ArcGIS Enterprise 10.8.1+
- Not supported on IE 11 browser
- Create privilege required
- **Maps** you own



ArcGIS Field Maps | Feature templates

Data collection types

Feature Templates

- Unique types of features you create in a feature layer using the map or GPS
- Include a symbol, name, description, and set of values
- Configuration Capabilities
 - Order Feature Templates and Types
 - Alter name and description
 - Apply default values per template
 - Delete templates
 - Duplicate templates

The screenshot displays the ArcGIS Field Maps interface for a map titled "El Dorado Fire - Templates" with a feature layer named "Damage Assessments". The interface is divided into several sections:

- Layers:** A sidebar on the left showing the "Damage Assessments" layer selected.
- Templates:** A central panel showing a list of feature templates for the "Damage Assessments" layer. The templates are:
 - Destroyed (>75%)
 - No Damage
 - Superficial Damage (1-9%)
 - Minor Damage (10-25%)
- Properties:** A panel on the right showing the configuration for the selected "Destroyed (>75%)" template, including display name, description, and default values.
- Map:** A small map view in the bottom right showing a red fire icon on a green field, representing the "Destroyed (>75%)" template.
- Filter:** A dropdown menu at the bottom right showing a list of all damage assessment templates, including "Moderate Damage (26-50%)" and "Major Damage (51-75%)".

Two blue arrows point to the "Minor Damage (10-25%)" template in the "Templates" list and the "Feature templates" dropdown menu, with the text "Feature templates" written below them.

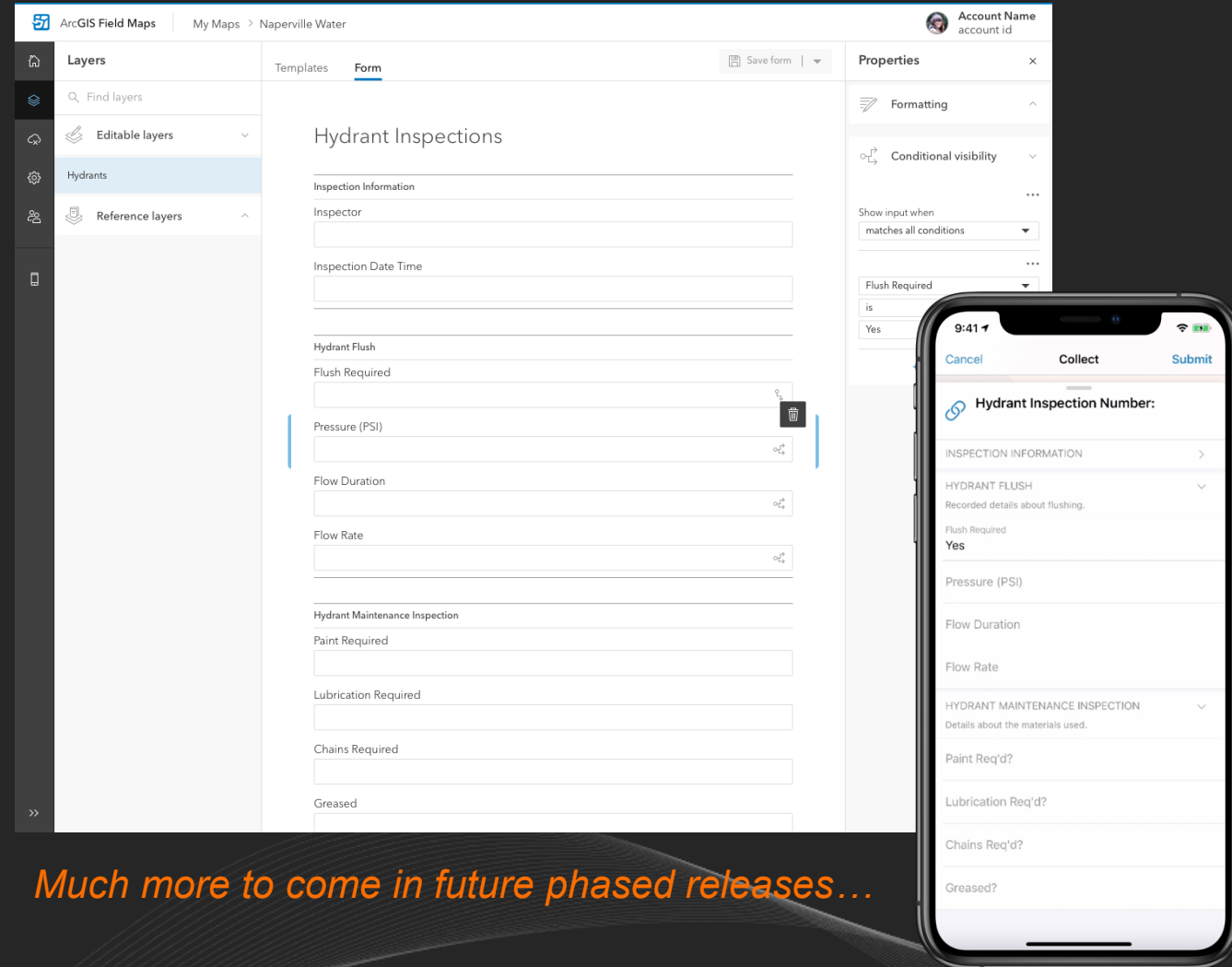
ArcGIS Field Maps | Smart forms

Map-based forms

- New way to create and edit attributes in ArcGIS
 - Forms **included** in web maps
 - Form editing in Map Viewer Beta
- Simplifies field editing experience
- Design experience in Field Maps web app

Key capabilities

- Use **groups** to organize fields
- Apply **conditional visibility** to fields
- **Format** your form and it's fields
- Qualify **required** and read-only fields



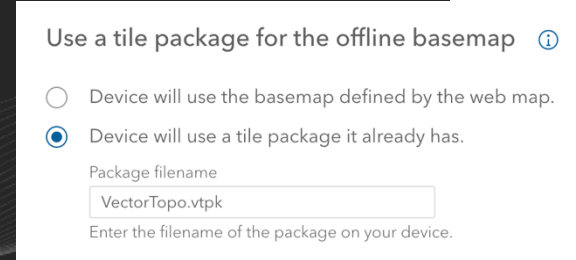
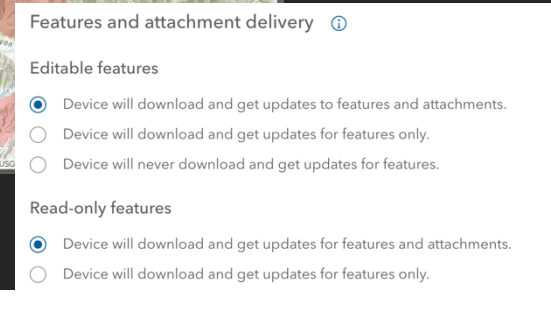
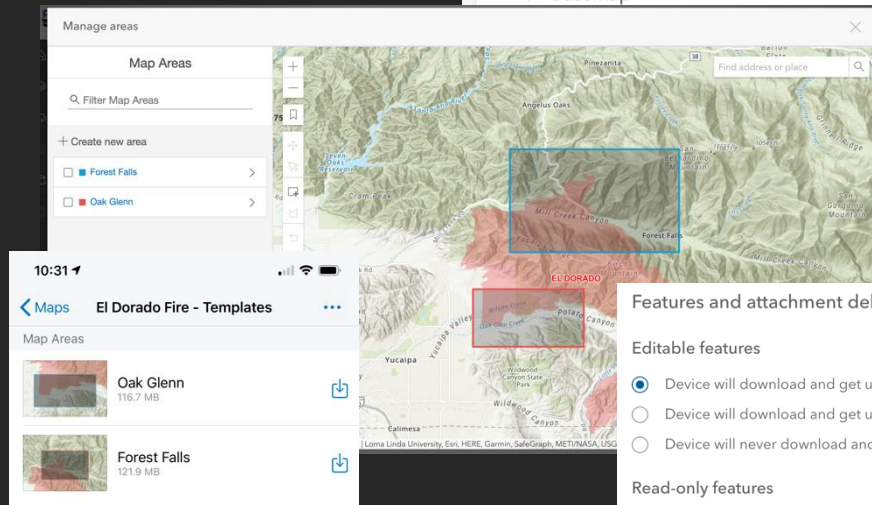
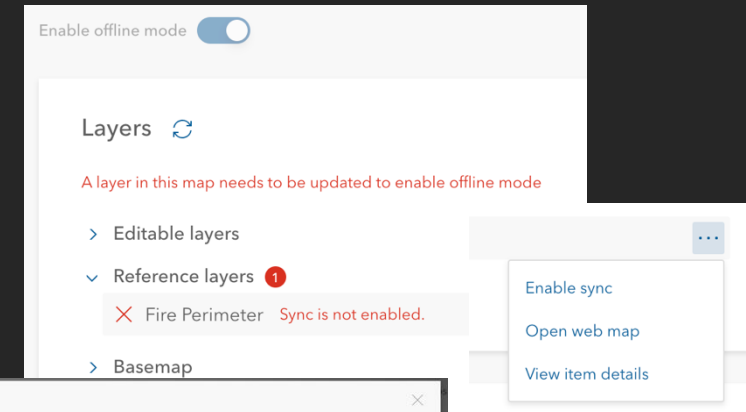
Much more to come in future phased releases...

ArcGIS Field Maps | Offline maps

Central management of offline capabilities

Manage Offline Map Capabilities

- Enable/Disable offline mode
- Diagnose and fix map layer issues
- Create and manage offline map areas
- Adjust delivery of features and attachments
- Reference offline basemaps



ArcGIS Field Maps

DEMO

Evaluate equitable drinking fountain distribution

Collect drinking fountain locations with ArcGIS Collector and analyze their condition.



Author

Charlotte Smith

Duration

🕒 1hr(s)

Field Operations

Mapping

Spatial Analysis & Data Science

Health & Human Services

Evaluate equitable drinking fountain distribution

ArcGIS Field Maps | Additional information

Resources

Product Content

- [Product page](#) and [resources page](#)
- [Blog articles](#)
- Guides
 - [Migration guide](#), [Offline guide](#)
- Learn Pathways
 - [Try ArcGIS Field Maps](#)
- [YouTube Playlist](#)
- GeoNet (community, ideas)



5 things to try in Field Maps

ArcGIS Field Maps offers a variety of features for working with maps in the field. Check out these five capabilities to get started.

[Read this article](#)

[Article](#)



[Article](#)

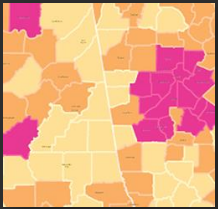


Migrate to ArcGIS Field Maps

Resources for migrating to ArcGIS Field Maps from ArcGIS Collector, ArcGIS Explorer, and ArcGIS Tracker.

[Read this article →](#)

[Article](#)



esri

**THE
SCIENCE
OF
WHERE**

