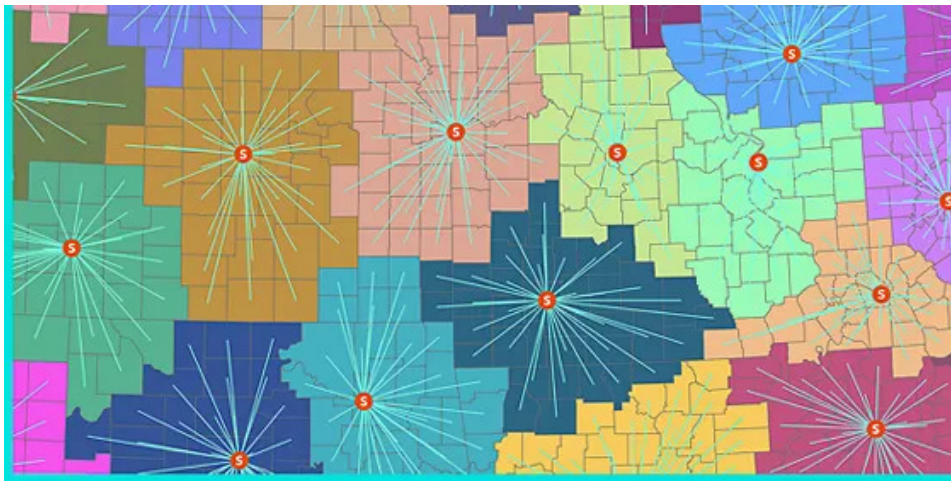


Health and Human Services e-Brief



Featured Story



Managing a Hepatitis A Outbreak Requires GIS Tools

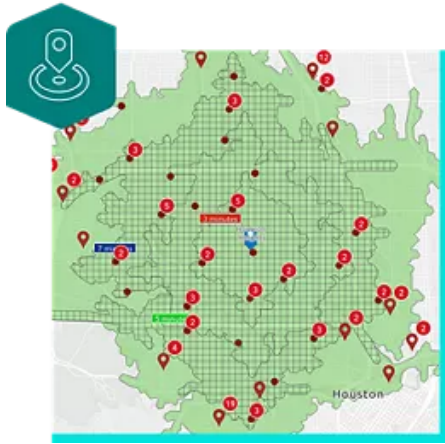
A GIS-based response allowed Erie County to contain the spread of a hepatitis A outbreak.

[Read More →](#)



Product News

Mapping the Gaps with Void Analysis



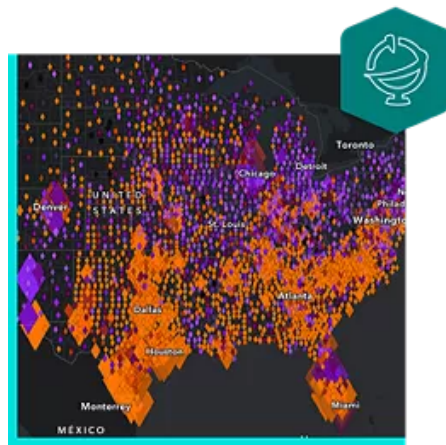
Void analysis is a powerful tool that allows organizations and policymakers to find underserved senior citizens.

[Learn More →](#)

CDC PLACES Now Has Measures on Health-Related Social Needs

The CDC PLACES dataset offers valuable information to understand and improve community health.

[Learn More →](#)



Success Story



Can Data Stop Death? Cook County, Illinois's New Dashboard Aims to Try

Cook County has launched an innovative dashboard mapping deaths by cause to reveal hidden patterns and direct resources where they're most needed.

[Learn More →](#)



Quote of the Month



“This research and experience amplified my understanding of how GIS can be leveraged to map out health disparities and guide better decision-making and policies in health care.” Mathew Chidera Ugwuanyi, GIS Technician II, Highlands County, Florida

[Read Their Story →](#)

You received this due to your subscription to Esri Announcements.

[Privacy](#) | [Contact Us](#) | [About Us](#)

Copyright © 2024 Esri. All rights reserved.

Esri, 380 New York Street, Redlands, CA 92373, USA.

