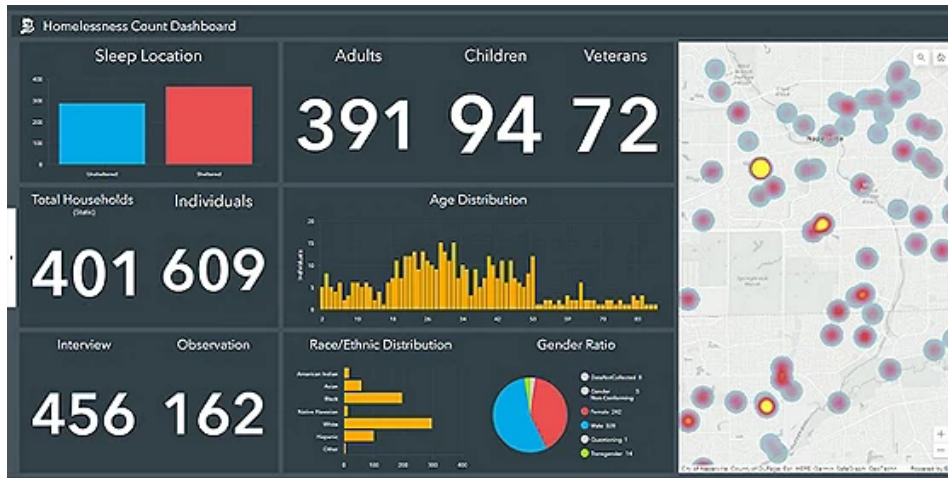
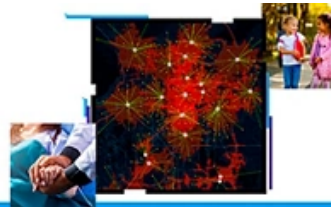




Esri Health and Human Services eBrief



Leveraging GIS to Turn Your Point-in-Time Count into a Tool for Preventing Future Homelessness

GIS is supporting hundreds of organizations as they conduct the annual Point-in-Time (PIT) count and gather foundational data to effectively prevent homelessness and decrease the number of individuals experiencing it.

[Read More](#)

Share:



CVS Health Spotlights Health Emergency Preparedness at Esri Conference

The CVS resiliency team uses GIS to help provide a high level of service to customers, distributors, and employees, even during a disaster.

[Learn More](#)



Five Ways to Apply GIS to Influenza Response

Flu season is upon us and similar to other illnesses, GIS technology can help communities slow the spread. Esri Chief Medical Officer highlights how a geographic approach for influenza response can limit spread.

[Read More](#)



More News in Health and Human Services



IEHP Succeeds with GIS by Showing Stakeholders What Is Possible

Healthcare IT Today highlights how IEHP health care leverages GIS technology for network adequacy, capacity building, and other workflows.

[Learn More](#)



GIS and IT: Better Together

Healthcare IT Today believes that GIS technology is essential for every health-care organization. So it built a resource page highlighting how organizations can leverage GIS to improve their care and workflows.

[Visit the Website](#)



New Resource Outlines GIS Strategies to Address Substance Misuse

The opioid epidemic and substance misuse crisis are still important issues for state and local governments and community organizations. Esri has outlined and highlighted how GIS technology can help health and human services organizations combat this crisis with data-driven decisions.

[Learn More](#)



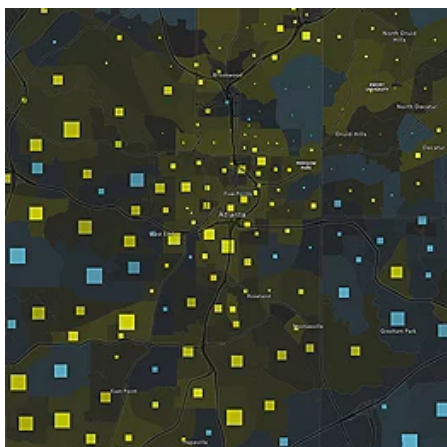
Leveraging Location Analytics to Address the Opioid Epidemic

The Stark County Health Department has launched an initiative to coordinate its opioid epidemic outreach efforts using GIS and location analytics.

[Read More](#)

Explore the Latest Public Policy Resources

Updates to American Community Survey Layers Now Available in ArcGIS Living Atlas of the World



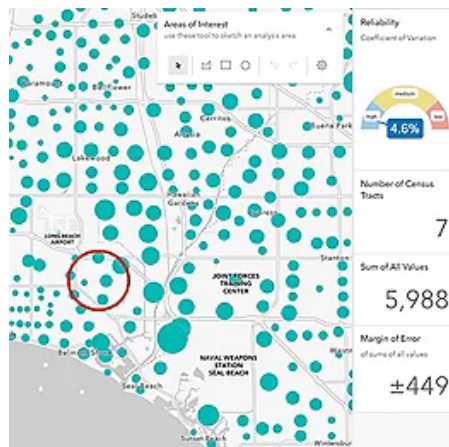
The 2017–2021 American Community Survey (ACS) five-year estimates are now available within ArcGIS Living Atlas of the World. These ready-to-use layers using ACS census data enables local officials, businesses, and researchers to understand what's taking place in their communities and helps community programs allocate resources.

[Check Out the Updates](#)

How Aggregation Resolves Reliability Concerns for American Community Survey Data

Get a quick sense of how much you'll have to aggregate tracts together to get a reliable American Community Survey estimate for your needs.

[Read the Blog](#)



Is your information up to date?

[Update Your Info](#)

[Privacy](#) | [Contact Us](#) | [About Us](#)
Copyright © 2023 Esri. All rights reserved.
Esri, 380 New York Street, Redlands, CA 92373, USA.

