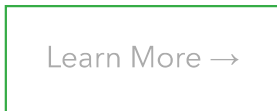




GIS App Helps Manage Water Resources in Montana

The app gives users detailed reports about streamflows throughout Montana, enabling data-driven decision-making about water distribution and conservation.



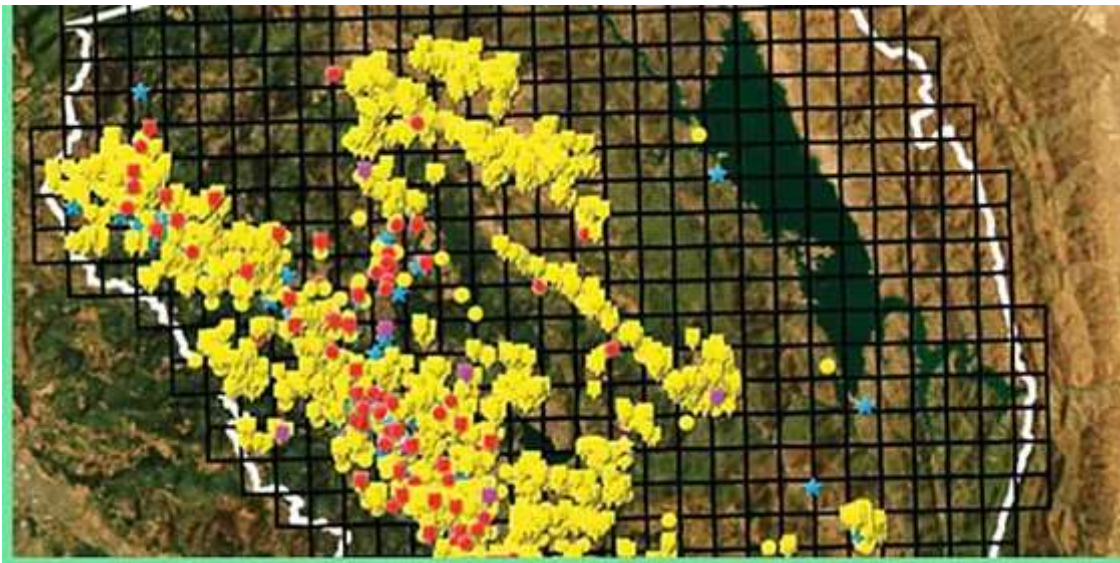


New Report from 2NDNATURE—Urban Areas Brace for Climate's Impact on Stormwater

Advanced modeling shows the future implications of stormwater runoff in cities, emphasizing the urgent need to reassess strategies by location.

[Learn More →](#)

GIS @ Work



Mobile GIS Transforms Pest-Detection Workflows in Napa County

Using ArcGIS Field Maps, Napa County Agricultural Commissioner's Office has streamlined their pest trapper process, saving over \$100K in time and labor.

[Learn More →](#)



New Report

Esri Highlighted as Top Provider for Smart Cities Solutions

Leading industry analyst IDC releases a report outlining the impact of IoT in developing smart cities approaches.

[Get the Report →](#)



Tip of the Month



Submit your maps and images for the Esri User Conference. You could be featured on the main stage in Jack Dangermond's Plenary Session presentation!

[Submit Your Images →](#)



Survey

Tell Us What You Think of the Environment and Natural Resources eBrief

Please take this short survey to share your thoughts on the Environment and Natural Resources eBriefs. Your feedback is greatly appreciated.

Take the Survey →

[Privacy](#) | [Contact Us](#) | [About Us](#)

Copyright © 2024 Esri. All rights reserved.
Esri, 380 New York Street, Redlands, CA 92373, USA.

