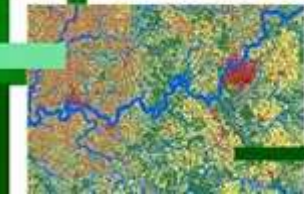


## Environmental and Natural Resources e-Brief



Video



### Boldly Mapping: Leveraging NASA Missions in ArcGIS for Invasive Species Challenges

Access the webinar with the Natural Areas Association and NASA to learn how combining ArcGIS with NASA satellite and sensor data reveals a new set of analytical capabilities for solving invasive species challenges.

[Access the Recording →](#)



Tip of the Month



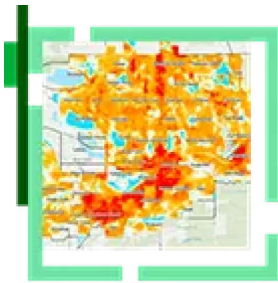
Subscribe to our print newsletter to get even more GIS content to your mailbox at no cost! Each quarter, we feature new stories and updates. The [Fall 2024 issue](#) is out now.

[Subscribe Now →](#)



## More Content You'll Love

### Longmont, Colorado: Building a Better Climate Future



Declaring a climate emergency set the city on a path towards climate resilience.

[Read the Story →](#)

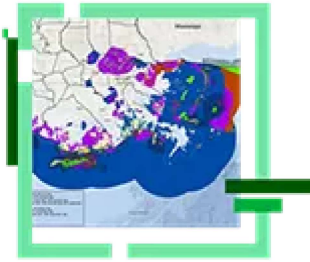
### Needleseye Park: GIS Helped Forge This Climbing Spot from Discovery to Construction



Employees in Oak Hill, West Virginia, are using GIS to track the development of the park, providing stakeholders with greater transparency.

[Read More →](#)

### Maps Guide Louisiana in Restoring a Crumbling Coastline



GIS is used to manage the logistics of moving sediment to stabilize coastal landscapes and protect infrastructure from storm surges.

[Learn More →](#)

---

You received this due to your subscription to Esri Announcements.

[Privacy](#) | [Contact Us](#) | [About Us](#)

Copyright © 2024 Esri. All rights reserved.

Esri, 380 New York Street, Redlands, CA 92373, USA.

