



Community Development e-Brief



Featured Story

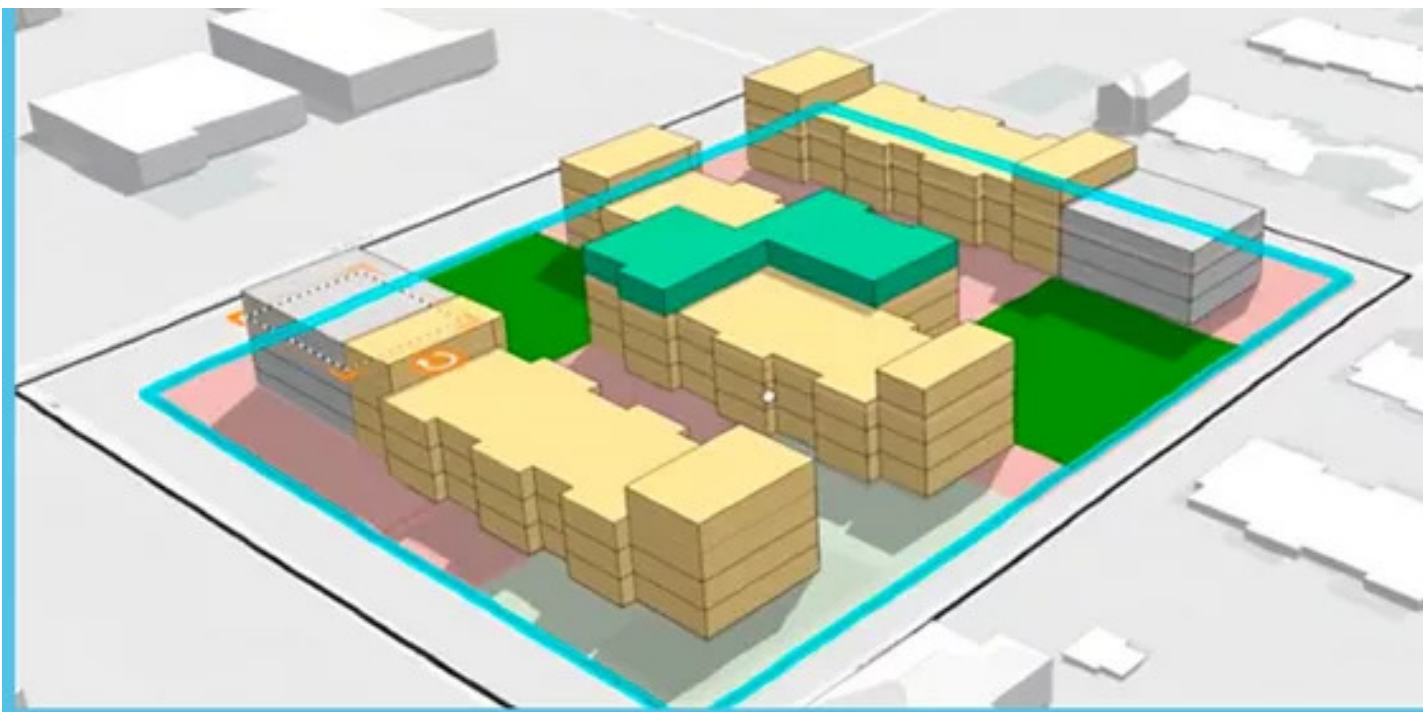


Urban Planners Harness GIS for Neighborhood Revitalization Work

ADP-U uses GIS technology to better understand assets in disinvested neighborhoods' and communities.

[Read More →](#)

Blog



North Carolina City Uses ArcGIS Urban to Increase Affordable Housing

The City of Rocky Mount made building 250 affordable housing units in five years a reality.

[Read More →](#)



Deprecation Notice: ArcGIS Community Analyst

Transition to ArcGIS Business Analyst
Web App

[Read More →](#)



You received this due to your subscription to {{Recipient.Sector}} Announcements.

[Update your subscription preferences.](#)

[Privacy](#) | [Contact Us](#) | [About Us](#)

Copyright © {{Current_Year}} Esri. All rights reserved. {{{dynamic_content_1476}}}

Esri, 380 New York Street, Redlands, CA 92373, USA.

