



# Esri Community Development eBrief



## Award Winning Morrisville, North Carolina, Uses GIS

The City of Morrisville in North Carolina teamed up with Esri partner Houseal Lavigne to build a digital twin of the Town Center to help the community visualize scenarios and make an informed decision using qualitative and quantitative information.

[Read the Article](#)

Share:   



## Economic Development Ebook Now Available

Download this new ebook to learn how you can gain a competitive edge with GIS.

[Download the Ebook](#)

---



## Improved Sharing Workflow in ArcGIS Urban

In the latest release of ArcGIS Urban, the workflow has been simplified to make plans and projects public by using the sharing capabilities.

[Learn More](#)

---



### **Aligning Your GIS Efforts with Federal Stimulus Funding**

Federal programs provide a road map for resilient recovery, and GIS provides the tools to get there. Explore five ways that communities can align stimulus funds with their GIS projects.

[Play the Video →](#)



### **Esri and Notable Esri Partners Among the Companies on the Annual GovTech 100 List for 2022**

This marks the sixth consecutive year that Esri, the global leader in location intelligence, has been recognized on the GovTech 100 list.

[Read More →](#)

---

**Visit the Esri Maps for Public Policy site  
to explore these maps and more.**

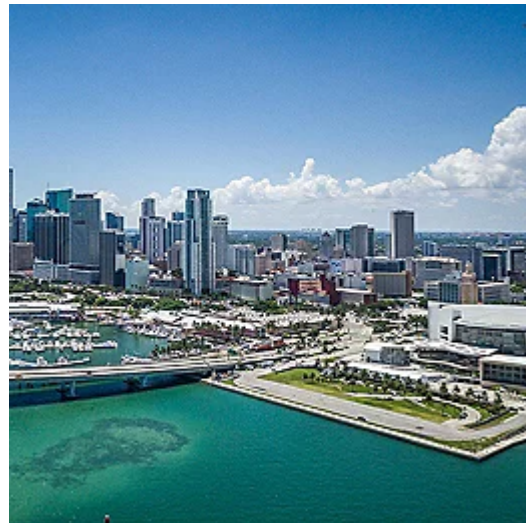
**[esri.com/policymaps](https://esri.com/policymaps)**



---

## Smart Cities and Climate Change: Lessons from Miami

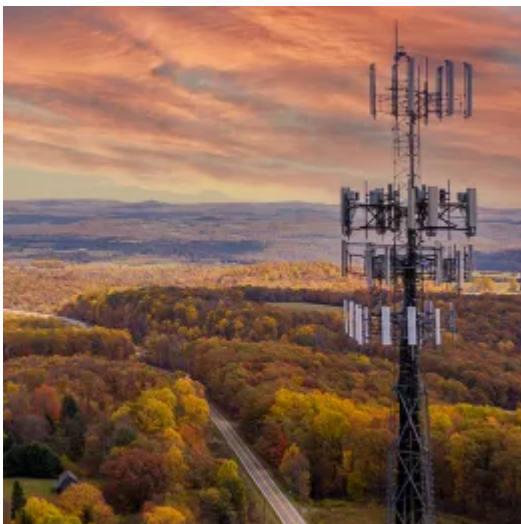
Coastal cities across the world are dealing with the effects of climate change, but in the United States, perhaps no city is as vulnerable to these issues as Miami. Luckily for residents, local governments are leading the way toward a more resilient, climate-ready city on the global stage.



[Check It Out →](#)

---

## Esri Wins NLC Capstone Challenge for Expanding Broadband Access



The National League of Cities (NLC) pilot program paired Esri with three member cities to develop and test broadband solutions. These new sets of solutions will be available to all Esri users on ArcGIS Solutions starting in April 2022.

[Learn More →](#)

---

# New ArcGIS Solution Released: Social Equity Analysis



Created in collaboration with



LOCAL AND REGIONAL  
GOVERNMENT ALLIANCE ON  
RACE & EQUITY



DENVER  
THE MILE HIGH CITY



CITY OF  
DURHAM



MILWAUKEE  
COUNTY

[Esri.com](https://www.esri.com) | [Privacy](#) | [Contact Us](#)

Copyright © 2022 Esri. All rights reserved.

Esri, 380 New York Street, Redlands, CA 92373, USA.

