

# Engaging Anglers and Managing Ponds with ArcGIS Hub and Operations Dashboard

Caroline Johnston  
GIS Analyst  
Cobb County PARKS



The background is a vibrant, abstract composition. It features a gradient of colors from deep purple and blue on the left to bright orange and pink on the right. Overlaid on this are stylized topographic map elements, including contour lines and a grid pattern. A prominent, curved yellow line sweeps across the right side of the image. The overall aesthetic is modern and energetic.

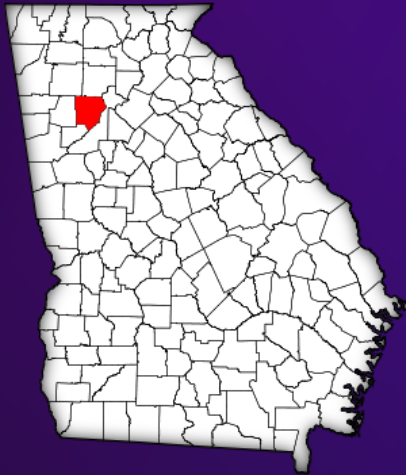
# Introduction

Cobb County PARKS

# Cobb County PARKS



- Metro Atlanta
- Population (2019): 760, 141
- 90 Park Properties
- 6,000+ Acres



Cobb County, GA





# Pond Management

Where we were... and where we are now

# Pond Management – Where we were

- Paper-based maintenance reports
- Occasional restocking
- Electrofishing analyses for larger ponds
- **PARKS Pond Goal: To create an efficient, data-driven maintenance resource for park ponds while engaging Cobb residents to participate in the conservation of a valuable natural resource.**

Property: Thompson Park  
Service Technicians: Austin

Service Date: May 5, 2021  
Type of Visit: Contract Visit

**General Lake/Pond Conditions**

Water Level: Full Pool	Level of Manmade Trash/Litter Removed: Low
Water Clarity: 24"	Primary Spillway: No Problems
Aesthetic Appearance: Good	Emergency Spillway: No Problems
Water Appearance: Dingy or Murky	Aquatic Vegetation Identified: n/a
Weather Observations: Cloudy	Extent of Aquatic Vegetation: n/a
Temperature (°F): 65-69	Action Performed: No Treatment Necessary
Erosion/Sedimentation: present, recent changes observed	Additional Services: n/a
Fish/Wildlife Observations: Geese - Current Activity	
Fountain Service: The fountain was serviced and was operating well at our departure.	

**Comments:** There is erosion along the dam. Some of the posts for the guard rail are exposed. See pictures.

Thank You!

Visit us at [www.aquascape.net](http://www.aquascape.net) for a comprehensive list of our services.  
Consulting • Restoration • Water Features • Stormwater • Fountains • Fisheries  
605 Maudlin Drive, Suite B, Woodstock, GA 30188 • (678) 445-0077

Pond Maintenance Report



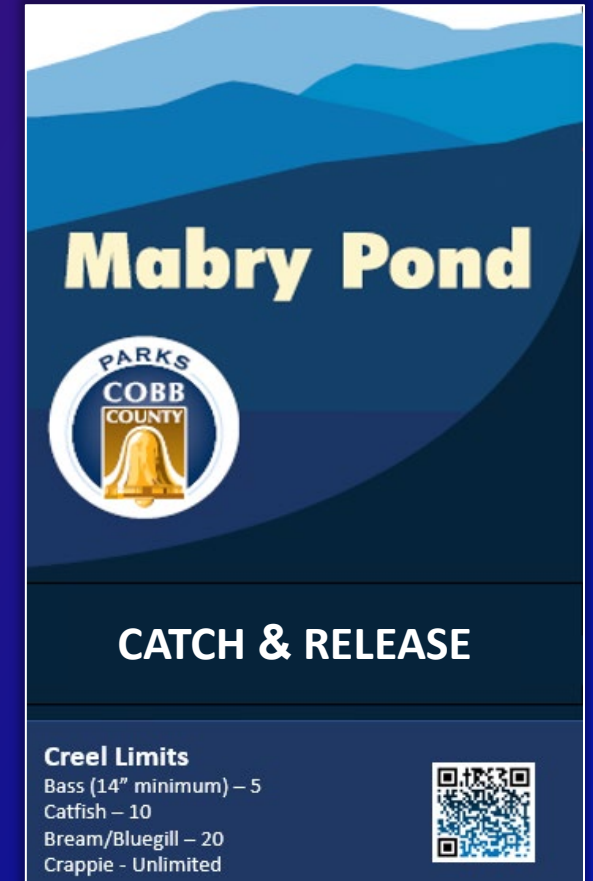
EBENEZER PARK POND

# Electrofishing



# Pond Management – Where we are *now*

- New Pond Signage (QR code links to Hub Site)
- PARKS Pond Hub Site (Public Pond Informational Site)
- Fishing Survey
- Cartegraph-Ops Dashboard Integration



# 'Smart' Pond Signs

- Fishing status inserts
  - Catch & Keep
  - Catch & Release
  - Closed
- Creel Limits
- QR Code links to PARKS Ponds Hub Site





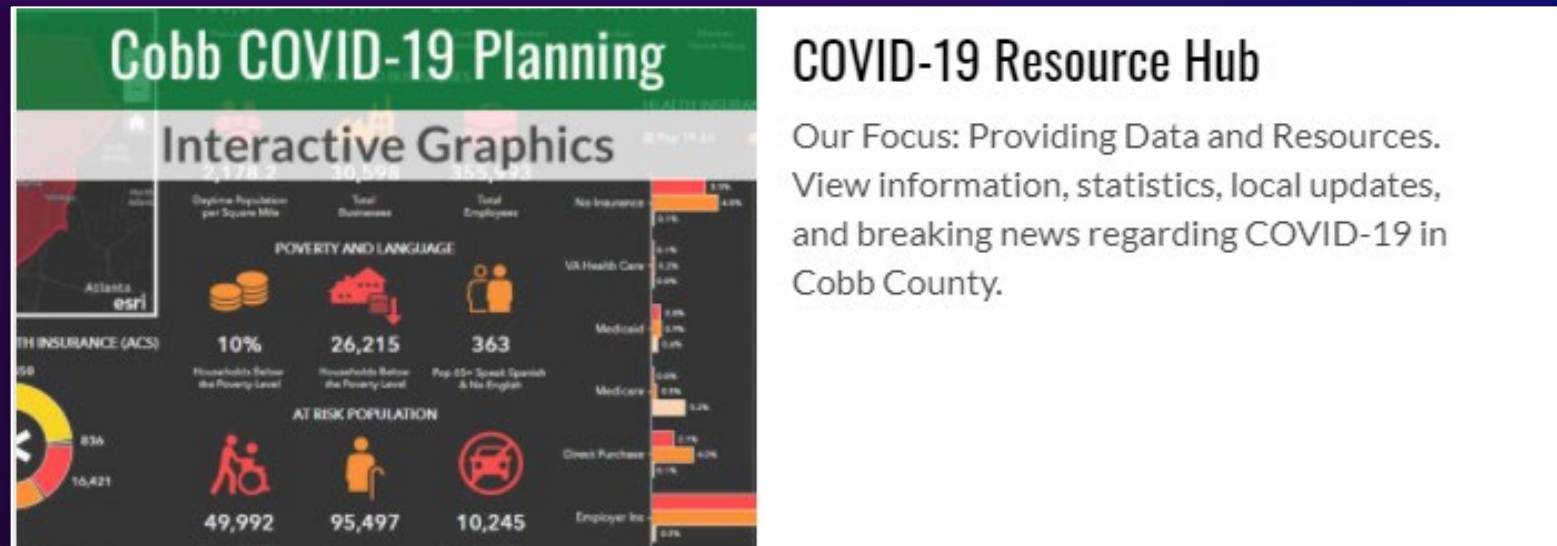
# PARKS Pond ArcGIS Hub

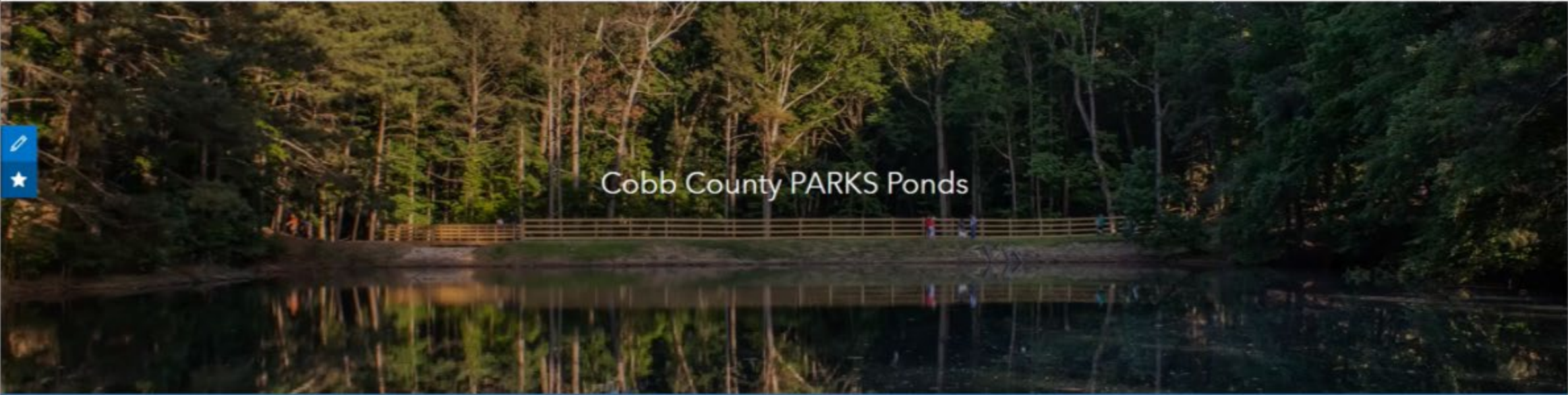


Informational Resource for Cobb residents

# ArcGIS Hub

- Community engagement platform
- Aggregates spatial resources around a specific topic





# Cobb County PARKS Ponds

Thank you for visiting the Cobb County PARKS Ponds website. Keep scrolling to find updates about current pond statuses, pond locations, the species of fish we stock, and more!

## Current Pond Status

Cobb County manages and maintains 12 ponds within several of our park properties. Many of our ponds are fishable and open to the public. Occasionally, we must close ponds for maintenance and/or development. Check back for notices about future pond closures.

Click [here](#) to purchase a Georgia fishing license.

Georgia law requires anglers aged 16 and over to have a current Georgia fishing license in their possession while fishing in fresh or salt water in Georgia.

Catch and Keep

Catch and Release

Closed

Park:

Pond Status:

# 1. Pond Status updated in Cartegraph OMS

Feature Class Layer	Last Sync End
Ponds	9/3/2020 12:38:15 AM

# 2. Pond layer syncs to connected feature class nightly

```
def enrich_layer(source, target, settings):
    wkid = target.properties.extent.spatialReference.wkid

    # Query for target features
    rows = _get_features(target, "1=1", return_geometry=True)

    for row in rows:
        # Perform spatial query to get attributes of intersecting feature
        ptgeom = {
            'geometry': row.geometry,
            'spatialRel': 'esriSpatialRelIntersects',
            'geometryType': 'esriGeometryPoint',
            'inSR': wkid
        }
        sourcefeat = source.query(geometry_filter=ptgeom)

        try:
            # Only first feature is processed
            source_val = sourcefeat.features[0].attributes[settings['source']]
            row.attributes[settings['target']] = source_val
        except IndexError:
            continue # no intersecting feature found

    if rows:
        results = target.edit_features(updates=rows)
        _report_failures(results)

    return
```

# 3. Script copies Status field from OMS Pond layer to Hub pond layer



Current Pond Status		
Cobb County manages and maintains 12 ponds within several of our park properties. Many of our ponds are fishable and open to the public. Occasionally, we must close ponds for maintenance and/or development. Check back for notices about future pond closures.		
Catch and Keep	Catch and Release	Closed
0	9	3

# 4. Pond site is updated with current fishing status

## Cobb County Parks Pond Fishing Survey

Answer the questions below to tell us about your recent visit to our ponds!

Date of Visit:

Time of Visit:

Pond:

Fishing Method:

 Catch and Release Catch and Keep

Number of adults in your party:

Number of children in your party (12 and under):

# Fishing Survey (Survey123)



9:27 PM Thu Sep 3

Cobb County Parks Pond Fishing Survey

Answer the questions below to tell us about your recent visit to our ponds!

**Date of Visit:**

**Time of Visit:**


**Pond:**

**Fishing Method:**  
 Catch and Release  
 Catch and Keep

Number of adults in your party:

Number of children in your party (12 and under):

▼ **Type of Fish Caught**



Bass

How many?

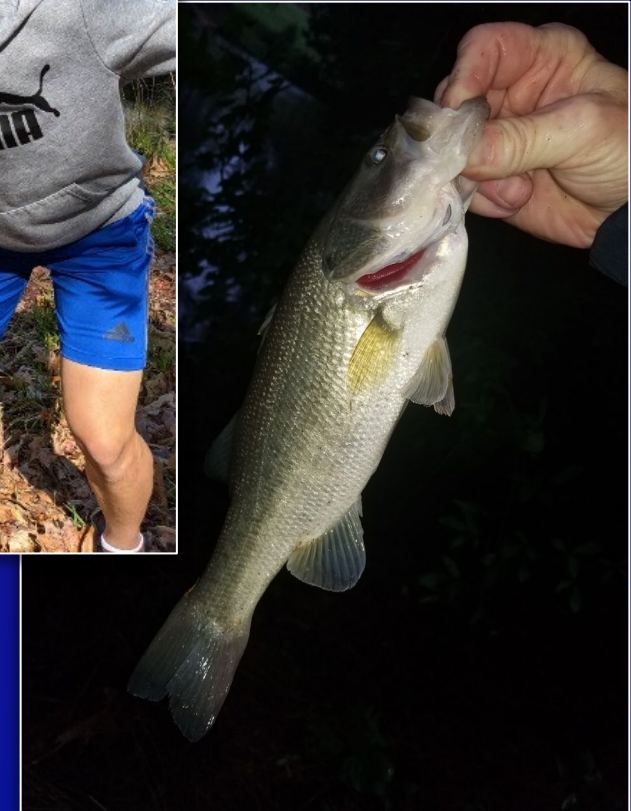
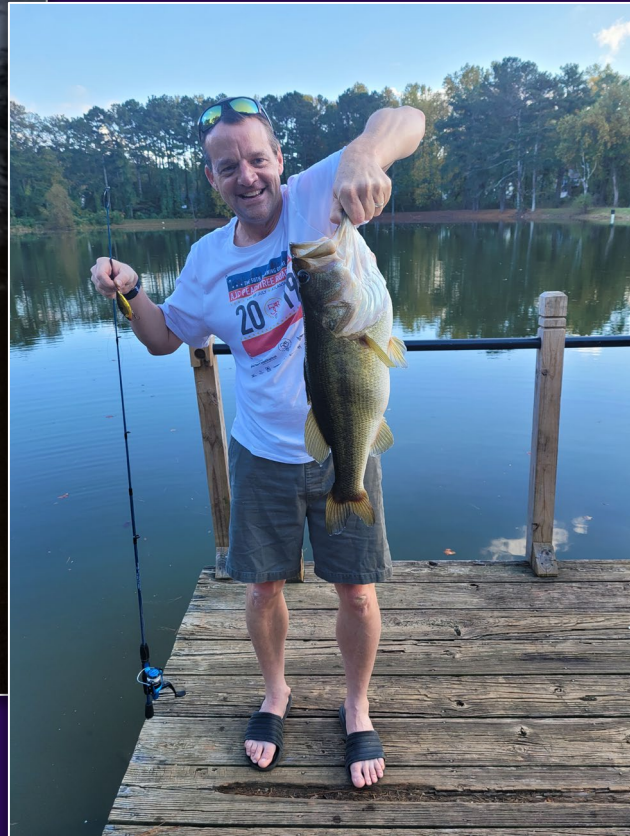
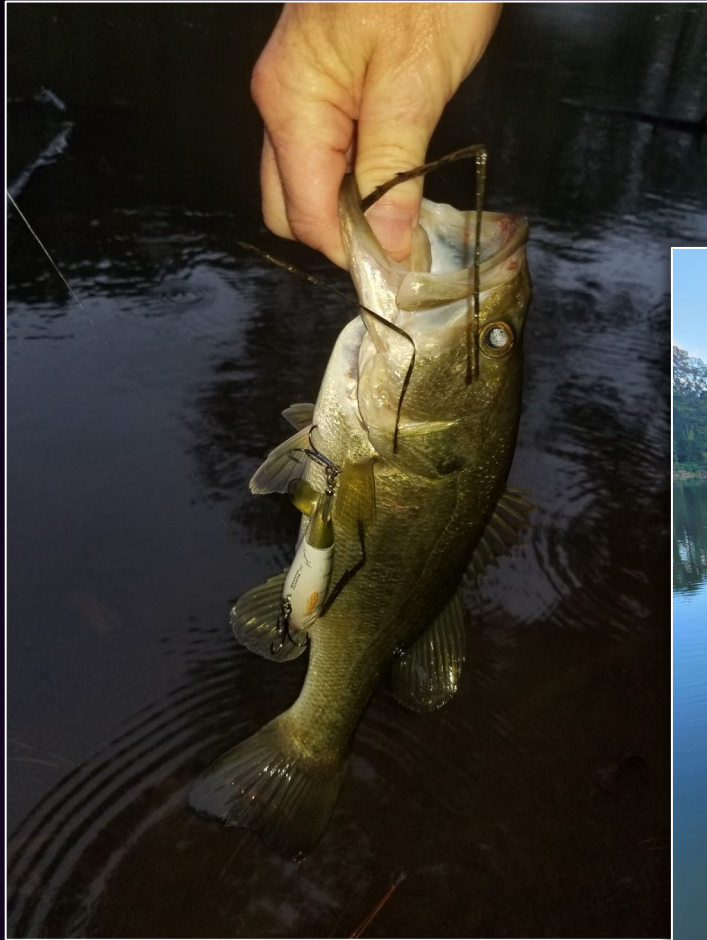
## Ebenezer Downs Park - Nov 8, 2020

1. Clear more brushes/bushes so there are even more areas to bank fish. 2. Place a trash bin closer to dock so anglers are more inclined to dispose of fishing lines, lures, etc. instead of leaving them on dock or worse yet, into the water.

## Lost Mountain Park - Sep 1, 2020

This pond badly needs restocking. Otherwise, I enjoy fishing here very much and appreciate how well maintained the grounds are at Lost Mountain Park. It would be nice to have some new benches at the pond, please. Thank you.

# Fishing Survey (Survey123)



# Operations Dashboard

Internal Resource for Pond Management





- Wild Horse Creek Pond
- Stout Pond
- Thompson Pond
- Schmidt Pond
- Ebenezer Downs Pond
- Furr Pond
- Mabry Pond
- Lost Mountain Pond
- Jim R. Miller Pond
- Hyde Farm Pond
- Bartlett Pond
- Cato Pond
- Yarbrough Pond
- Al Bishop Pond

Last update: 5 minutes ago

Fishing Survey Results

**CATCH AND KEEP**



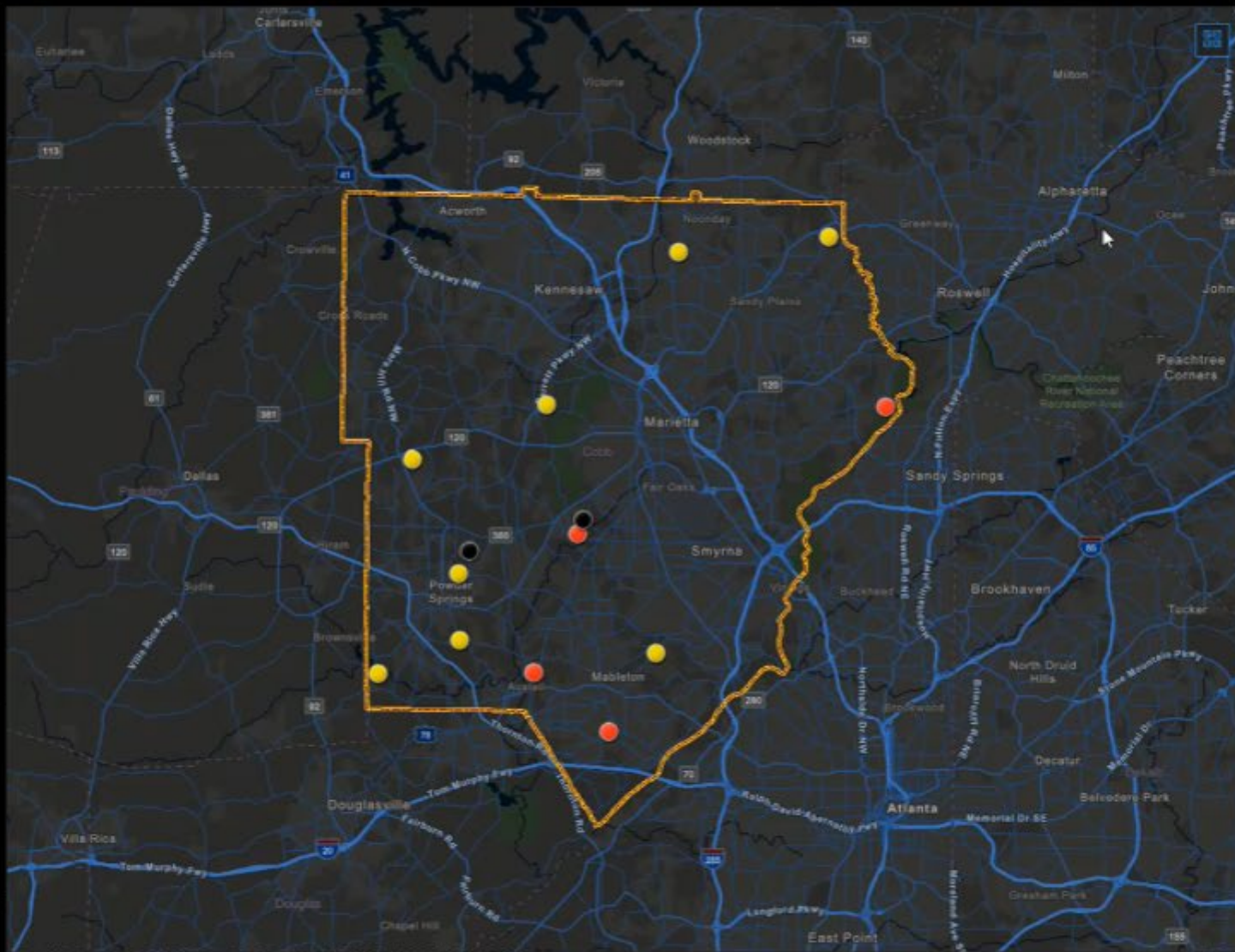
**CATCH AND RELEASE**



**CLOSED**



**UNLISTED**



City of Marietta, GA, Esri, HERE, Garmin, SafeGraph, METI/NASA, USGS, EPA, NPS, USDA

Powered by Esri

Restocking Tasks

- 201927 Pond:HYDE Completed 6/29/2020, 8:00 PM
- 201868 Pond:LMPK Completed 6/29/2020, 8:00 PM
- 228752 Pond:SCHMT Planned
- 228774 Pond:SCHMT Planned
- 228784 Pond:SCHMT Planned
- 228800 Pond:SCHMT Planned
- 228811 Pond:SCHMT Planned
- 228817 Pond:SCHMT Planned

Last update: 5 minutes ago

Aquascape Contract Visits

- Task ID 257878 Pond:THOMPK 5/5/2021, 10:10 AM
- Task ID 257879 Pond:MABRY 5/5/2021, 10:10 AM
- Task ID 257880 Pond:JRM 5/5/2021, 10:10 AM
- Task ID 257881 Pond:HYDE 5/5/2021, 10:10 AM
- Task ID 257882 Pond:CATO 5/5/2021, 10:10 AM
- Task ID 257883 Pond:BARTLT 5/5/2021, 10:10 AM
- Task ID 257390 Pond:SCHMT 5/3/2021, 4:23 AM
- Task ID 257391 Pond:EBNEZR 5/3/2021, 4:23 AM
- Task ID 257392 Pond:FURR 5/3/2021, 4:23 AM
- Task ID 257393 Pond:LMPK 5/3/2021, 4:23 AM
- Task ID 257394 SmallPond:LMPK 5/3/2021, 4:23 AM
- Task ID 257395 Pond:STOUT 5/3/2021, 4:23 AM

Last update: 5 minutes ago

# Cartegraph OMS – Ops Dashboard Integration

**Contract Visit Details**

Aquatic Vegetation: Spike Rush, Bladderwort, weeds  
Aquatic Vegetation Extent: Moderate  
Action Performed: Algaecide & Herbicide Applications Performed  
Fountain Service: n/a  
Comments:

**Pond Restock Details**

Bass: 12 ea  
Bream or Bluegill: 0 ea  
Catfish: 12 ea  
Crappie: 0 ea

Feature Class Layer | Last Sync End ▾  
Cartegraph Tasks | 9/3/2020 5:42:00 PM

Tasks point layer syncs to server and AGOL nightly

**Restocking Tasks**

- 201927 Pond:HYDE Completed 6/29/2020, 8:00 PM
- 201868 Pond:LMPK Completed 6/29/2020, 8:00 PM

*Last update: 7 minutes ago*

**Aquascape Contract Visits**

- Task ID 213671 Pond:WILDHS 8/21/2020, 9:15 AM
- Task ID 213672 Pond:STOUT 8/21/2020, 9:15 AM
- Task ID 213673 Pond:LMPK 8/21/2020, 9:15 AM
- Task ID 213674 SmallPond:LMPK 8/21/2020, 9:15 AM
- Task ID 213675 Pond:FURR 8/21/2020, 9:15 AM
- Task ID 213676 Pond:SCHMT 8/21/2020, 9:15 AM
- Task ID 213677 Pond:EBNEZR 8/21/2020, 9:15 AM

*Last update: 7 minutes ago*

Task-Based layouts in OMS  
CG Fields connected to GIS Fields

Updates Operations Dashboard

# Summary

- **PARKS Pond Goal: To create an efficient, data-driven maintenance resource for park ponds while engaging Cobb residents to participate in the conservation of a valuable natural resource.**
- **New Pond Signage**
  - Links to informational PARKS Pond Hub Site
- **ArcGIS Hub Site (Public Use)**
  - Reaching residents in a novel way
- **ArcGIS Operations Dashboard (Internal Use)**
  - Enables PARKS to make data-driven decisions quickly



# Thank you!

Caroline Johnston  
GIS Analyst, Cobb County PARKS

[caroline.johnston@cobbcounty.org](mailto:caroline.johnston@cobbcounty.org)

770.528.8823

<https://www.linkedin.com/in/caroline-johnston/>

