

# ArcGIS Pro: The Road Ahead

David Watkins, Ty Fitzpatrick, Orhun Aydin, Craig Williams,  
Nathan Shephard, Aubri Kinghorn, Stefan Balbo, Jim McKinney




esri

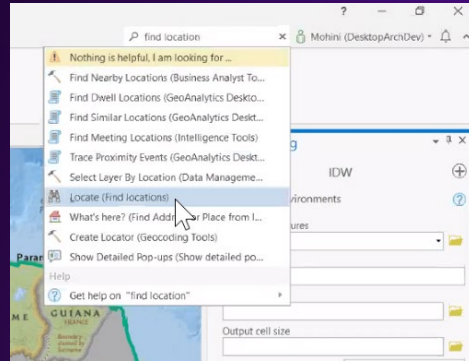
THE  
SCIENCE  
OF  
WHERE®

# ArcGIS Pro 2.8 Highlights

## Performance and Productivity

- 3D Terrain system
  - Vector tiles in layout view
  - Saving and opening large projects
  - Geoprocessing improvements
  - Multiple portal connections and sharing pane
  - Working with Revit files
  - Feature Service initialization and append
  - Numerous other enhancements across UI, drawing and analysis
- 

# ArcGIS Pro 2.8 Highlights



Command Search

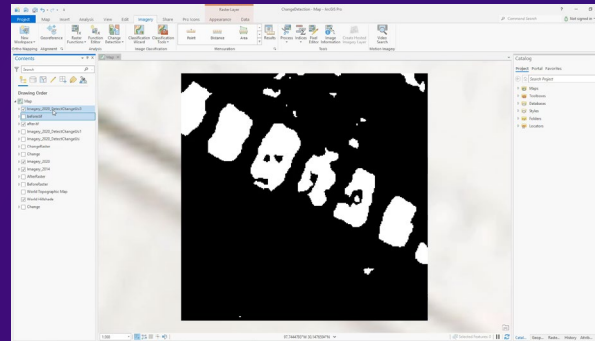
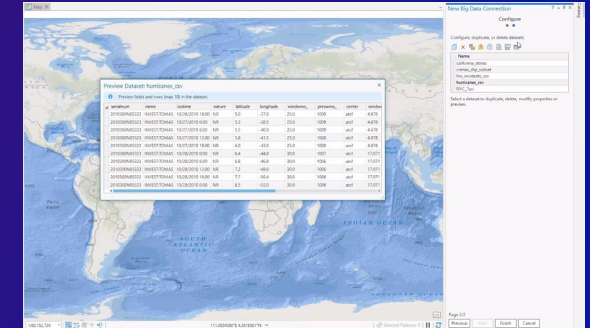
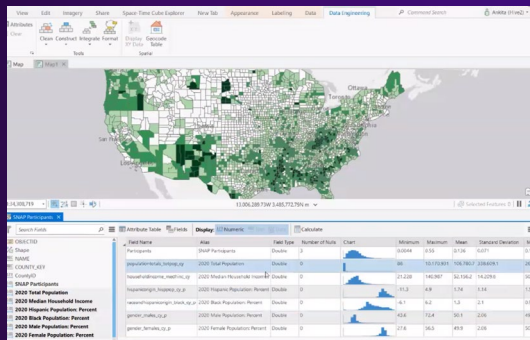


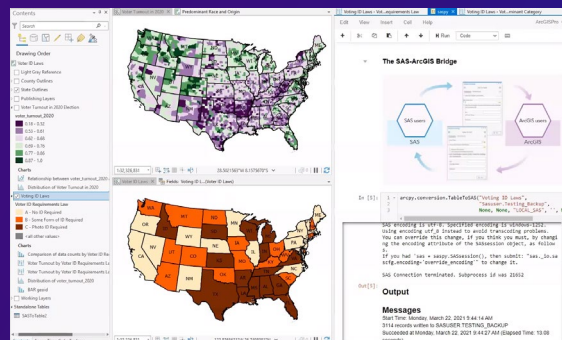
Image Change Detection using deep learning



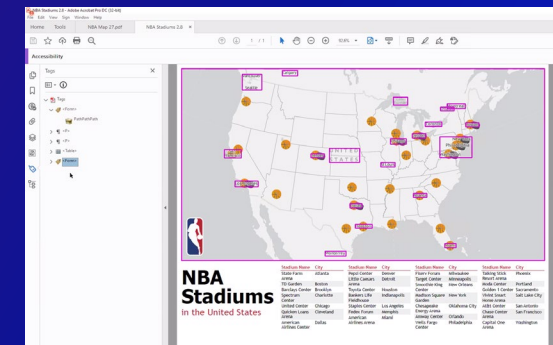
Big Data Connections



Data Engineering



SAS-ArcGIS Bridge



PDF Accessibility





# Knowledge

Ty Fitzpatrick

# Presence-only Prediction

Orhun Aydin

# Mapping

Craig Williams





The background features a stylized topographic map with contour lines and a grid, overlaid on a vibrant color gradient of purple, blue, and pink. A prominent yellow arc curves across the right side of the image. In the bottom right corner, there is a detailed, colorful illustration of a mountain range with snow-capped peaks and a winding path.

# Map Exploration

Nathan Shephard

The background is a vibrant, abstract composition. It features a gradient of colors from deep purple and blue on the left to bright orange and pink on the right. There are several overlapping, semi-transparent shapes, including a large, curved orange shape on the right side and a smaller, curved pink shape above it. A thin, bright yellow line curves across the middle of the image. In the bottom right corner, there is a stylized, low-poly mountain range in shades of orange and yellow. The overall aesthetic is modern and dynamic.

# Layout

Aubri Kinghorn





# Roadmap

Stefan Balbo

# ArcGIS® Pro Roadmap

## Near-term

- Upgrade Python Environment
- Knowledge Graphs
- Projects in the Enterprise
- Roof Editing in Stereo
- Dynamic Feature Clustering
- Animated Symbols
- Big Data Analytic Warehouses
- Indoor Positioning
- Presence-only Prediction
- Change Point Detection
- Geoprocessing Credit Estimator
- Suitability Modeler Sharing
- Parcel Fabric 3D Cadaster
- Voxel Layer Sharing
- Reality Mapping Extension
- Linear Referencing UI

## Mid-term

- Catalog Layers
- Point Cloud Scene Layer Data Management
- Simulation Modeling
- Presentations
- Spatio-temporal Density Analysis
- Multiscale GWR
- Scientific Data Ingestion
- Parcel Lineage Visualization
- Parcel Fabric Coordinate Based Cadaster
- Managed Indoor Data Pipeline
- ENC Chart Viewing
- Enhanced Radar data support

## Long-term

- Terrain Editing
- Materials Authoring
- High Fidelity Rendering
- 3D Mesh as Ground
- Integrated Mesh Scene Layer Data Management
- 64-Bit Object ID
- New Data Types (BigInteger, Timestamp with Time zone)

May 2021

The background features a vibrant, abstract design with a color palette of magenta, purple, blue, and orange. It includes organic, flowing shapes, a grid pattern, and a stylized mountain range in the lower right corner. A thin yellow arc is visible on the right side.

We want your feedback

Click on the [Session Survey link](#)  
below this video window





esri®

THE  
SCIENCE  
OF  
WHERE®