



EnerVest Delivers Enterprise GIS Integration with Kingdom and FME



Agenda / Schedule

- Introductions
- Business Case
- Technical Solution
- Reader / Writer Examples
- Business Impacts
- Contact Information

Introductions – Who is LOGIC?



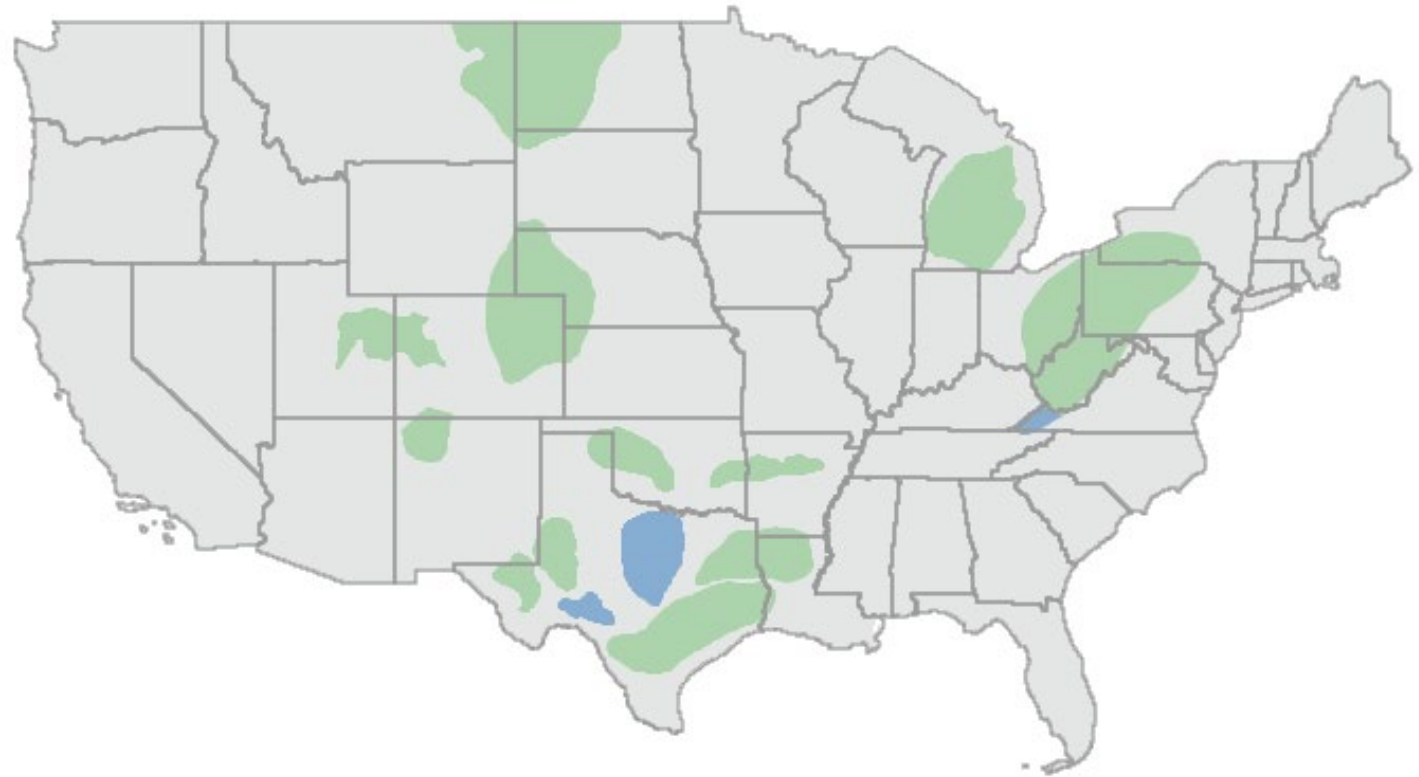
Enterprise GIS Services

- GIS strategy assessments / roadmaps, planning, design
- Custom Esri Web AppBuilder Widgets
- Enterprise GIS implementations
- Fit-for-purpose business solutions
- Integration with line of business systems
- Knowledge transfer, governance, & training
- Ongoing support, maintenance, upgrades

Introductions – Who is EnerVest?

- EnerVest is a private equity firm with its own operating company.
- We own and operate North American assets for our investors and our business partners.

OPERATIONAL FOOTPRINT



■ Current Operating Areas ■ Historical Operating Areas

Business Case

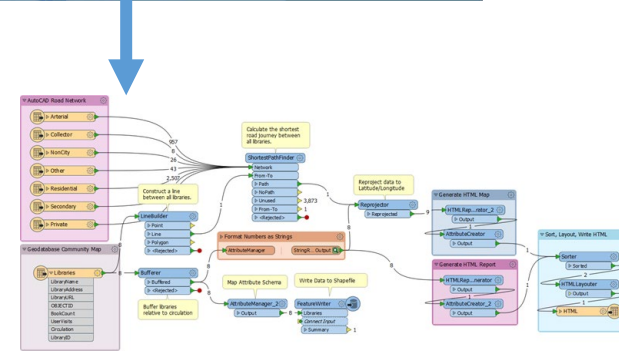
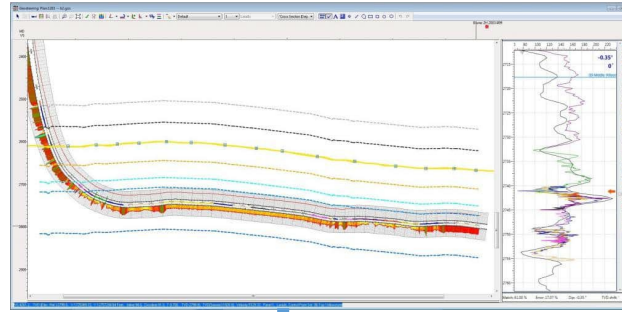
Data in Silos / Proprietary Formats

- Our Geoscience Technicians ensure well locations are accurate by comparing multiple internal and external data sources that are available.
- This level of quality control is essential for subsurface modeling and well planning.
- We wanted to enable everyone in the company to view this well data without engineers or landmen needing to tie up an expensive geological interpretation software license to do so.
- EnerVest was looking for a solution to easily extract all our geoscience project's well information into our spatial data warehouse but was unable to find an off the shelf solution.

Technical Solution

IHS's Kingdom > Safe Software's FME > Esri Enterprise > Spotfire

- Kingdom Software Development Kit (SDK)
 - Well Header
 - Deviation survey
 - Zone information
- Custom FME Reader / Writer
- Export Kingdom data to
 - Enterprise GIS environment
 - Analytics data warehouse
- Updating Kingdom projects with zone information with the FME Writer

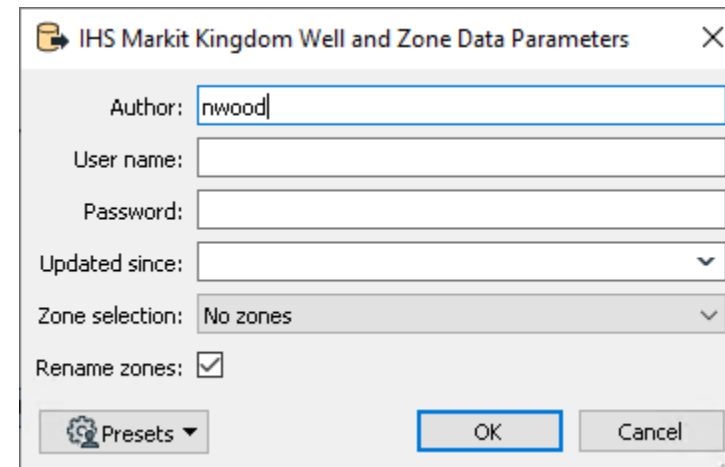
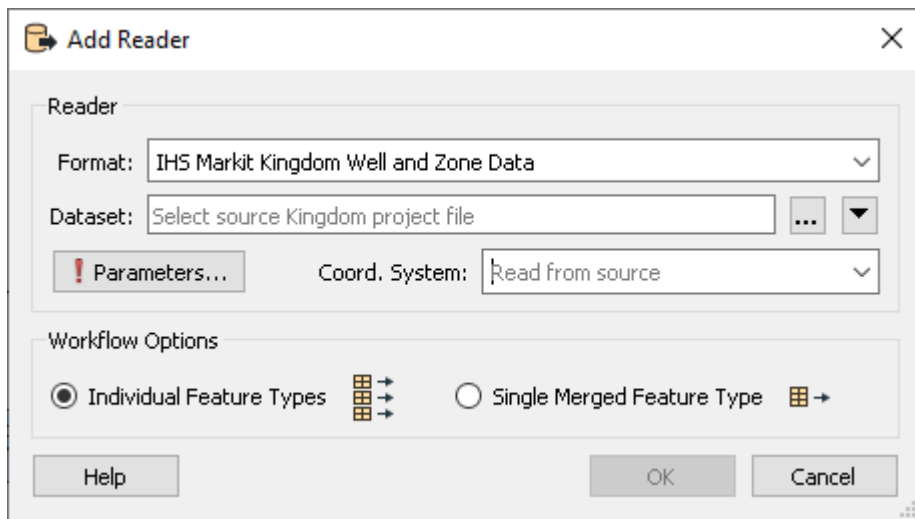


GEOJSON

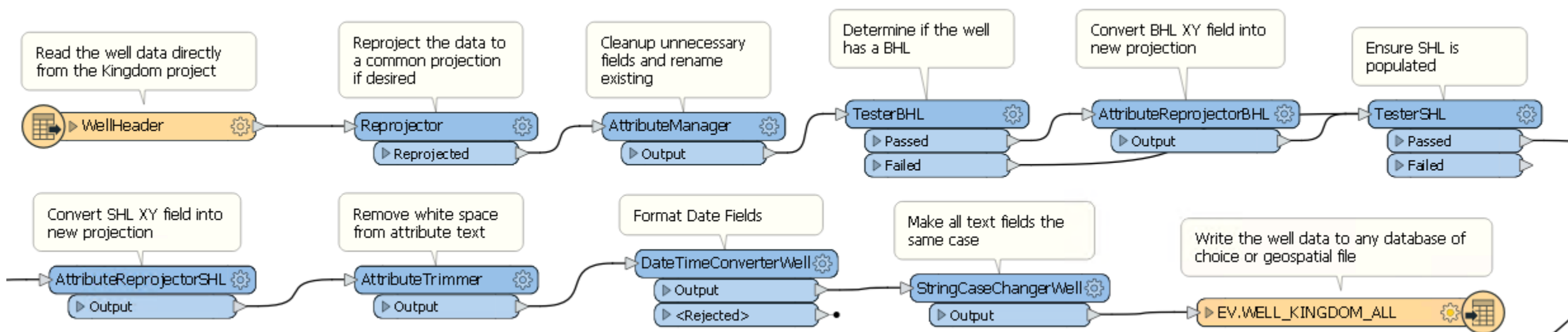


Custom Reader Interface

- Dataset: Kingdom TKS project file
- Coord System: Need to know a matching EPSG code, if your project is set to feet but uses UTM (meters) the standard codes won't work
- Author: User can only see their own content and that shared globally, use the project administrator login for full read / write project access
- Updated Since: Only read well data recently updated

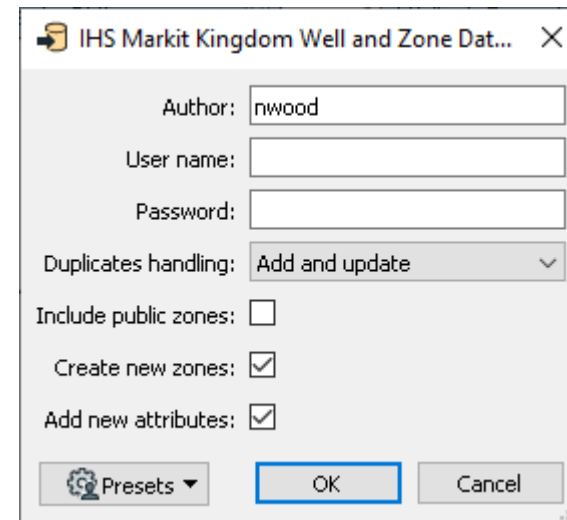
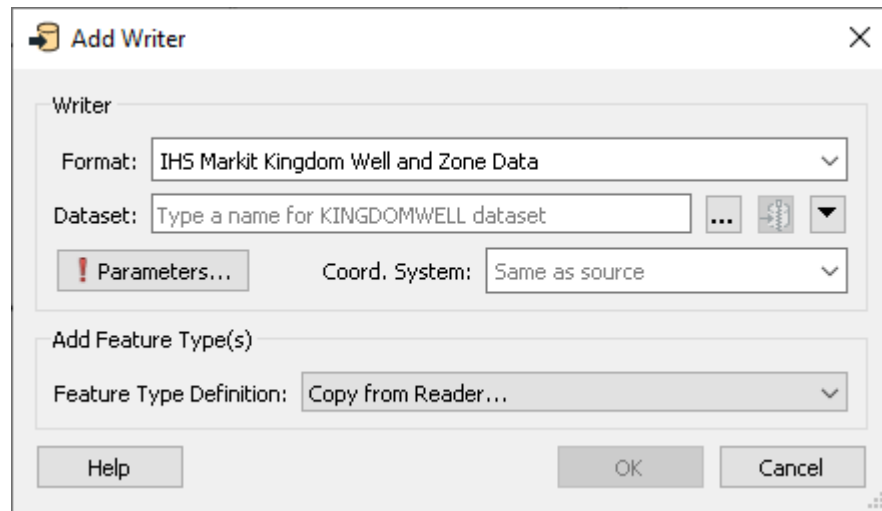


Sample Well Reader Workspace



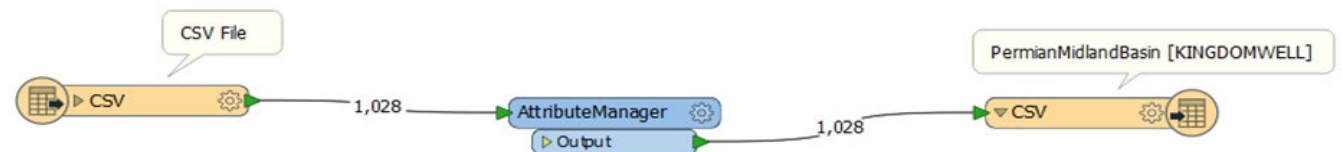
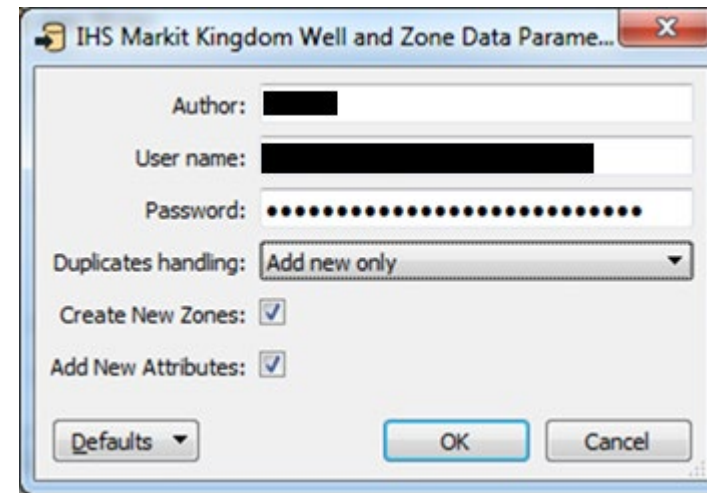
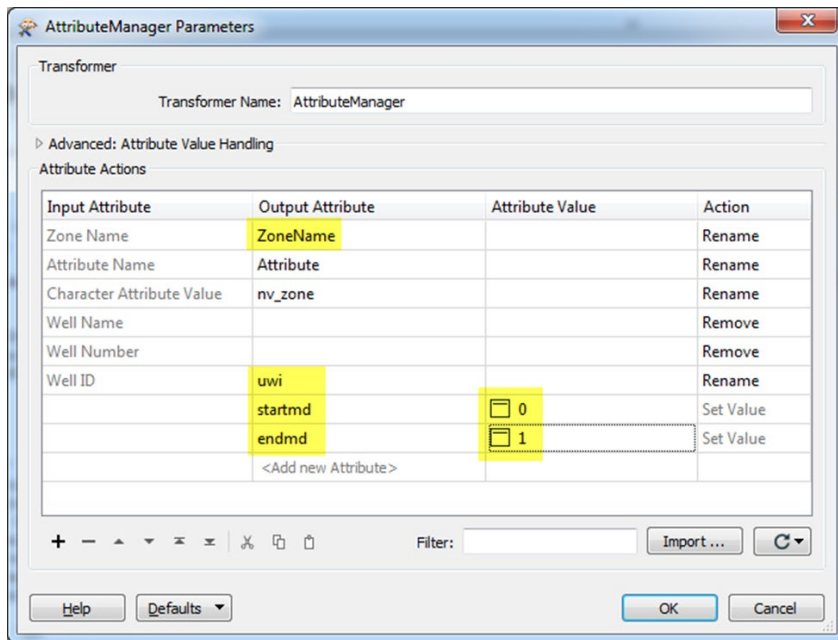
Custom Writer Interface

- Dataset: Kingdom TKS project file
- Author: Must use the project administrator login to create zones
- Parameters: Flexible options for updating or creating new zones
- Naming: Avoid special characters for author and zone names



Zone Writer

- Use the **AttributeManager** transformer to assign fields to the zone manager fields.
- Add the writer using the **IHS Markit Kingdom Well and Zone Data** format and connect to the **.tk** file
- Enter the credentials for the Kingdom project in the Parameters
- Run the workspace



Business Impact

Centralized Data / Open Data Formats

- Empower Geologists & Geophysicists to utilize Enterprise maps and analytics outside of geoscience apps only
- Decrease the need for expensive geological interpretation software licenses
- Integrates geoscience location information into our spatial data warehouse
- Combines regional data into one dataset for company-wide analytics

Thank You!

LOGIC Solutions Group
10375 Richmond Avenue, Suite 850
Houston, Texas 77042
Mitchell Atwood
mitchell.atwood@logicsolutionsgroup.com
Office 832.619.7885
Mobile 832.498.5295

