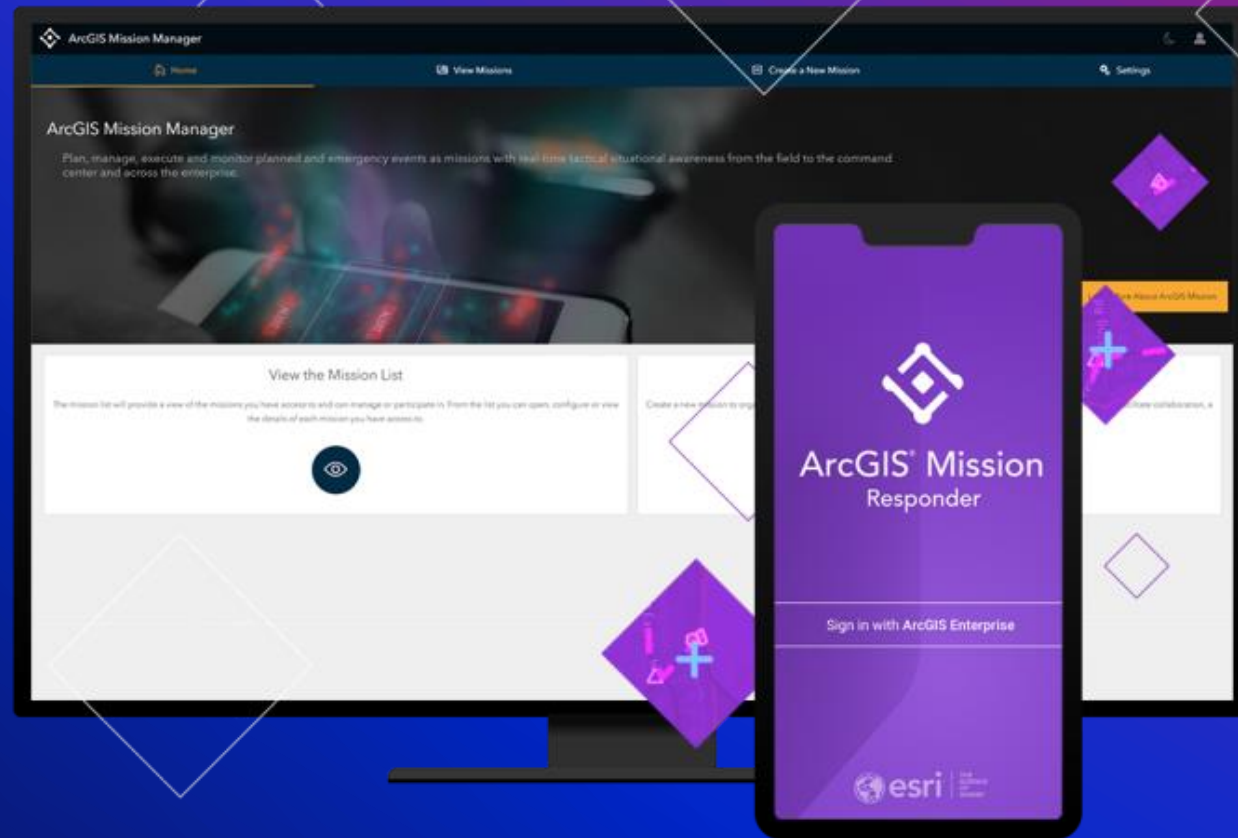


ArcGIS Mission

Command and Control, Situational Awareness, and Team Collaboration

Darron Pustam | Patrick O'Brien



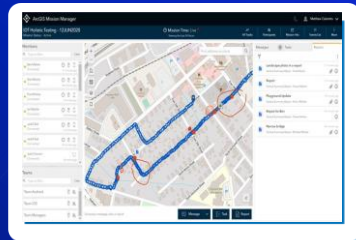
ArcGIS Mission is an all-inclusive command and control software that streamlines operations while providing teams tactical situational awareness of an operating environment.



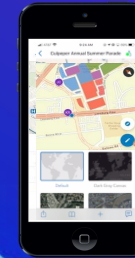
ArcGIS Mission System Requirements

Base Deployment of Enterprise 10.8 or above

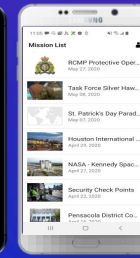
Mission Manager
Licensed Web App



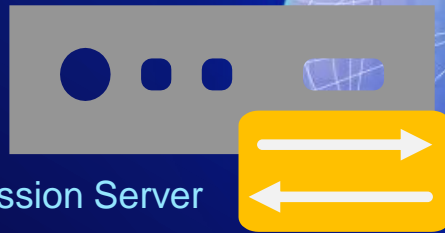
Mission Responder
Free Mobile App



iOS



Android



Mission Server
Licensed Server Role



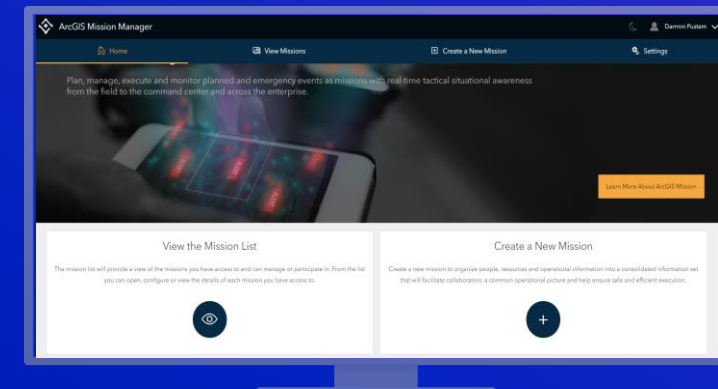
ArcGIS Enterprise



ArcGIS Mission Manager

A focused web app that enables you to create and perform mission analysis throughout the mission lifecycle.

- Creating mission maps – graphics and dynamic reference layers
- Organizing a mission with members and teams
- Providing additional materials – documents and photos
- Tasking and Reporting
- Overseeing field activity & communicating with mission members
- Creating a Mission Dashboard





ArcGIS Mission Responder

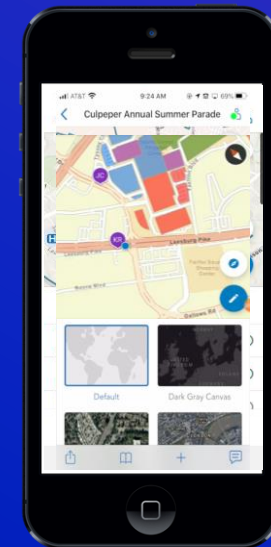
A focused mobile app on iOS and Android that allows users in the field to participate in active missions.

Engage with

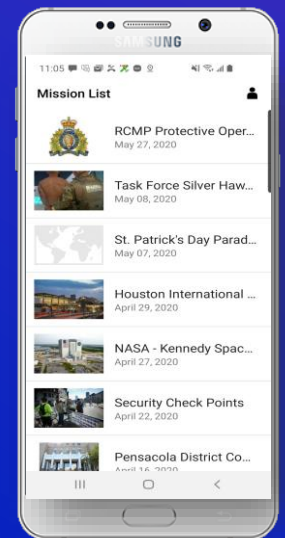
- Responder Chat & Geomessages
- Tasks & Reports
- Other Mission Members and Team Locations

Interact with

- Map Tools
- Mission Details
- Mission Teams and Members
- Additional Materials



iOS



Android



ArcGIS Mission Server

Facilitates communication between Mission Manager users and Mission Responder users.

Key functions include:

- Organizing the presence and availability of everyone on the team
- Populating the location of Responder users onto the mission maps
- Forwarding geomessage data between Manager and Responder
- Transferring data to long-term storage
- Support for the developer experience





ArcGIS Mission is deployable across many sectors



Public Safety Agencies



Corporate Security



Health and Human Services Agencies



Transportation Organizations



Natural Resources Agencies

Communicate & Collaborate
I need to be in contact with
my team at all times

Real-Time Updates
It is critical my team
have the latest information

Accountability & Improvement
Our work must be stored
as a system of record

One System
We have consistent workflow patterns
and need a single solution

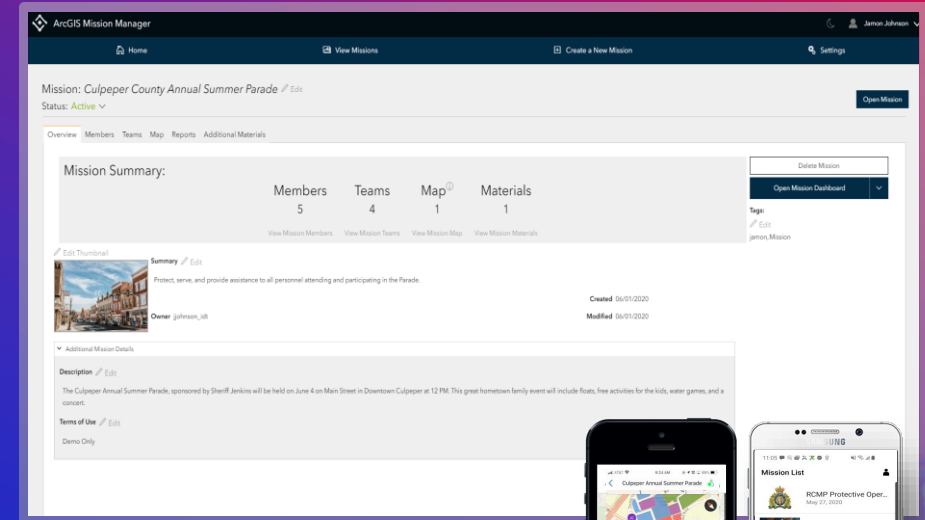




ArcGIS Mission

Planning

- Define Mission
- Designate Location
- Assemble Teams
- Create Dashboard



Missions organize people, resources and operational information into a consolidated picture that facilitates collaboration and helps ensure safe and efficient execution.



ArcGIS Mission

Execute & Manage

Assign Tasks

Track Locations & Activities

Chat & Geomessage

Report Observations

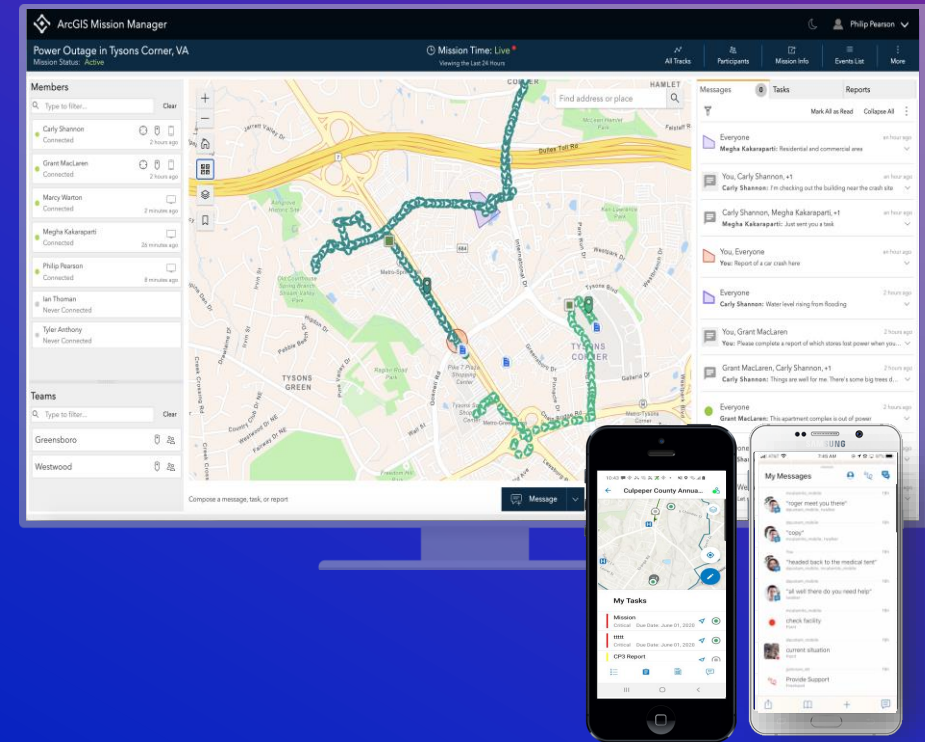
Planning

Define Mission

Designate Location

Assemble Teams

Create Dashboard



Members of a mission can view and actively participate in a mission. This includes composing chats and geomessages and monitoring all mission activities.



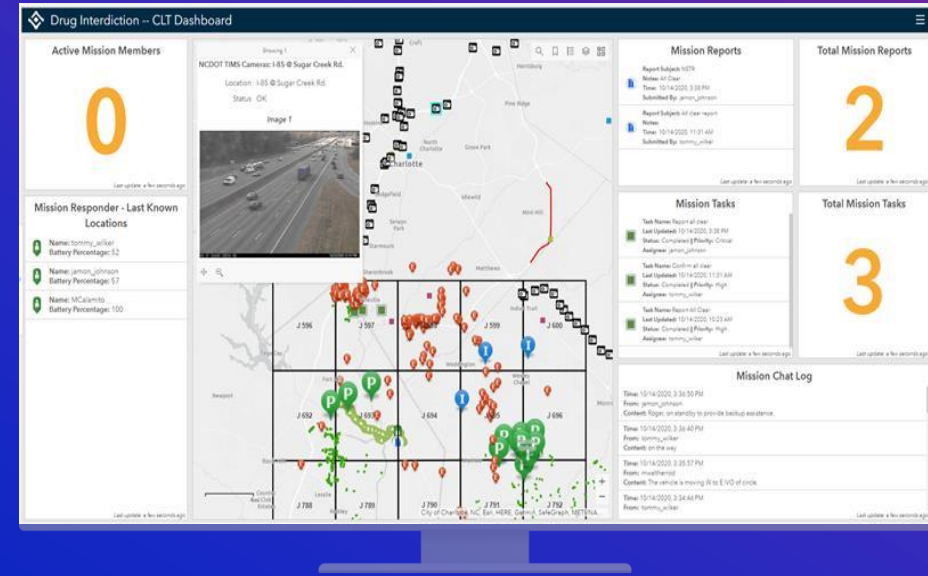
ArcGIS Mission

Replay & Review
Temporal Analysis
Understand Patterns
After Actions Review
Future Mission Planning

Execute & Manage
Assign Tasks
Track Locations & Activities
Chat & Geo-Message
Report Observations

Planning

Define Mission
Designate Location
Assemble Teams
Create Dashboard



Tailor dashboards to your audiences, giving them information to make informed decisions, visualize trends, and monitor status in real time.



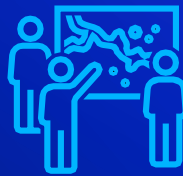


ArcGIS Mission Benefits

Integrated
command and control



Tactical
team awareness



P2P
communication

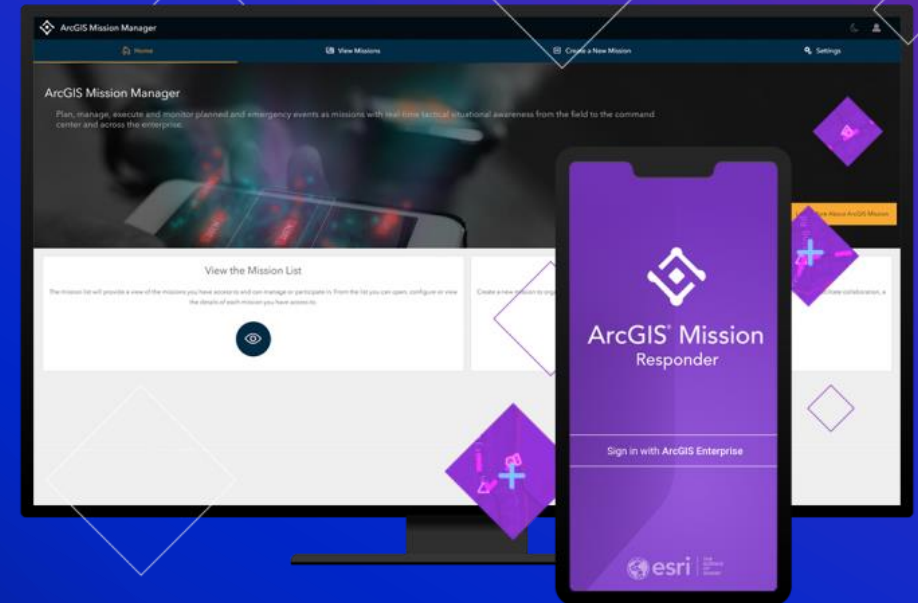


Improved
understanding



ArcGIS Enterprise

With ArcGIS Mission, organizations will be able to better coordinate their operations, make informed decisions in real time, and unlock new intelligence from completed missions.



Enterprise 10.9 and Beyond (Planned)

- What's Next
 - Support for ArcGIS Enterprise Security Configurations
 - Support for Custom, User Defined Mission Reports
 - Extended Support for Peer-to-Peer and Disconnected Workflows
 - Introduction of Analysis-based Map Tools in Mission Manager
 - Evolve and Expand Mission Server's APIs and Programmatic Access
- What's Coming
 - Situational Awareness Sensor Integration (i.e. Video, Camera, Body Sensors)
 - Radio Integrations for Situational Awareness in Austere and Disconnected Environments
 - Mission Planning – Pre Mission Preparation
 - Analytical Tools for Mission Replay



ArcGIS Mission – Connect with the team

Resources:

- Product page - go.esri.com/fed2021/mission-overview
- Documentation - go.esri.com/fed2021/mission-help
- Blogs - go.esri.com/fed2021/mission-blogs
- GeoNet - go.esri.com/fed2021/mission-geonet
- YouTube Playlist - go.esri.com/fed2021/mission-playlist
- LinkedIn - go.esri.com/fed2021/mission-linkedin

Social Buttons:

- Twitter: @ArcGISApps <https://twitter.com/ArcGISApps>
- Facebook: @ArcGISApps <https://www.facebook.com/ArcGISApps/>
- Instagram: @ArcGISApps <https://www.instagram.com/arcgisapps/>

Contact us: ArcGISMission@esri.com

Questions/Comments



esri®

THE
SCIENCE
OF
WHERE®