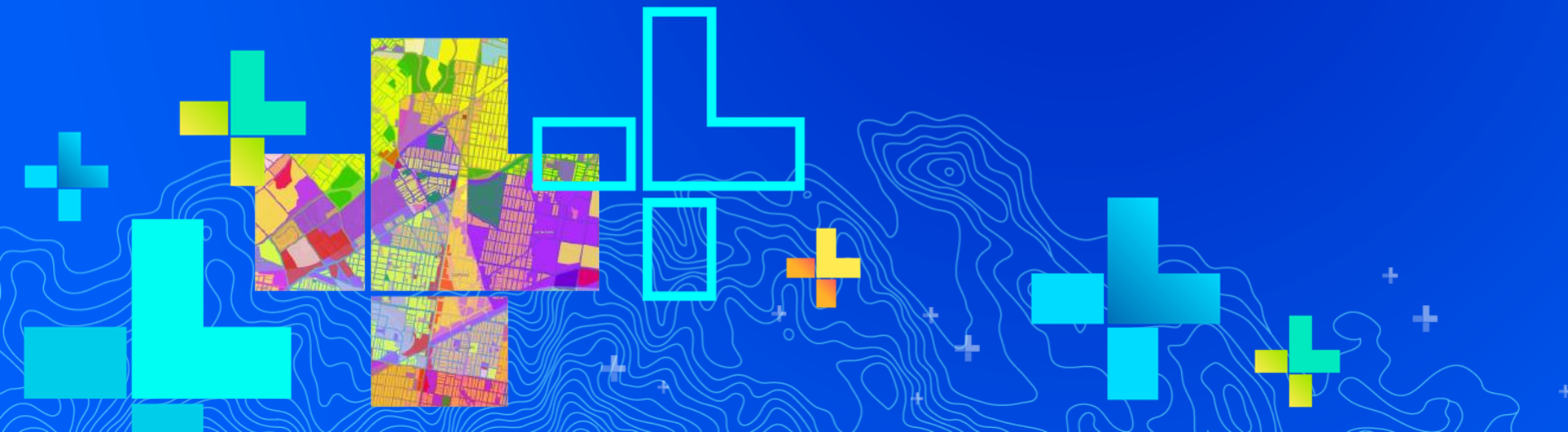


Leveraging ArcGIS Solutions to support Emergency Management Operations

Jeremiah Lindemann



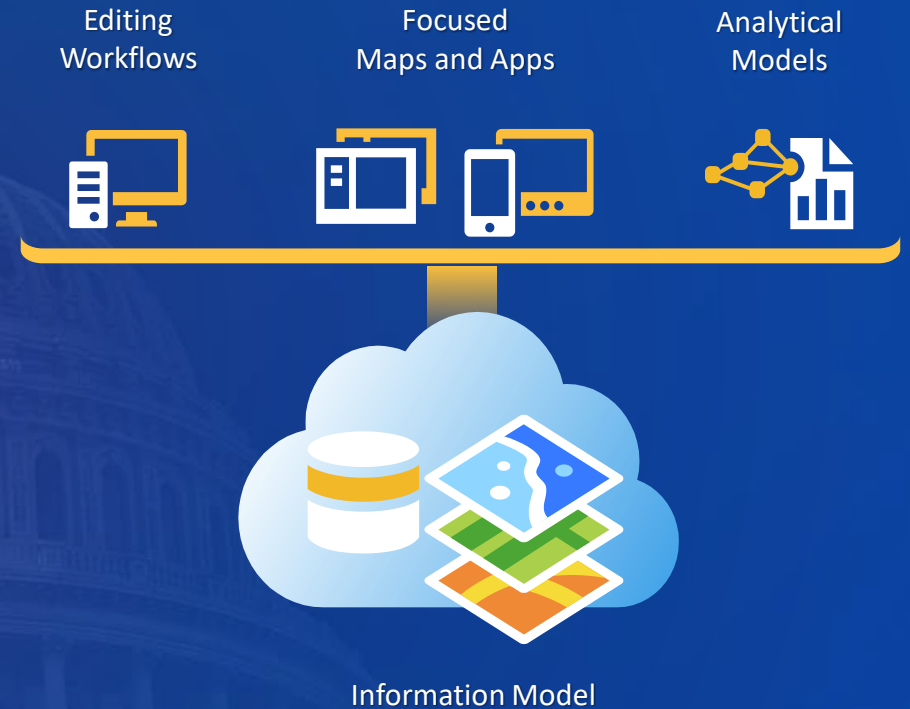
Agenda

- Overview of set of Solutions for Emergency Management Operations
- How to publish the solutions to your environment
- Common configuration workflows



ArcGIS Solution Templates | State and Local Government

- **Collection of useful maps and apps**
 - Configurable and extensible
 - Freely available and fully supported
- **Community of users** (2000+ Meetup members)
 - Best Practices / Implementation Ideas
- **Network of Esri Services and Partner offerings**
 - Help users implement, sustain and enhance



...Improving government operations and enhancing services provided to the public

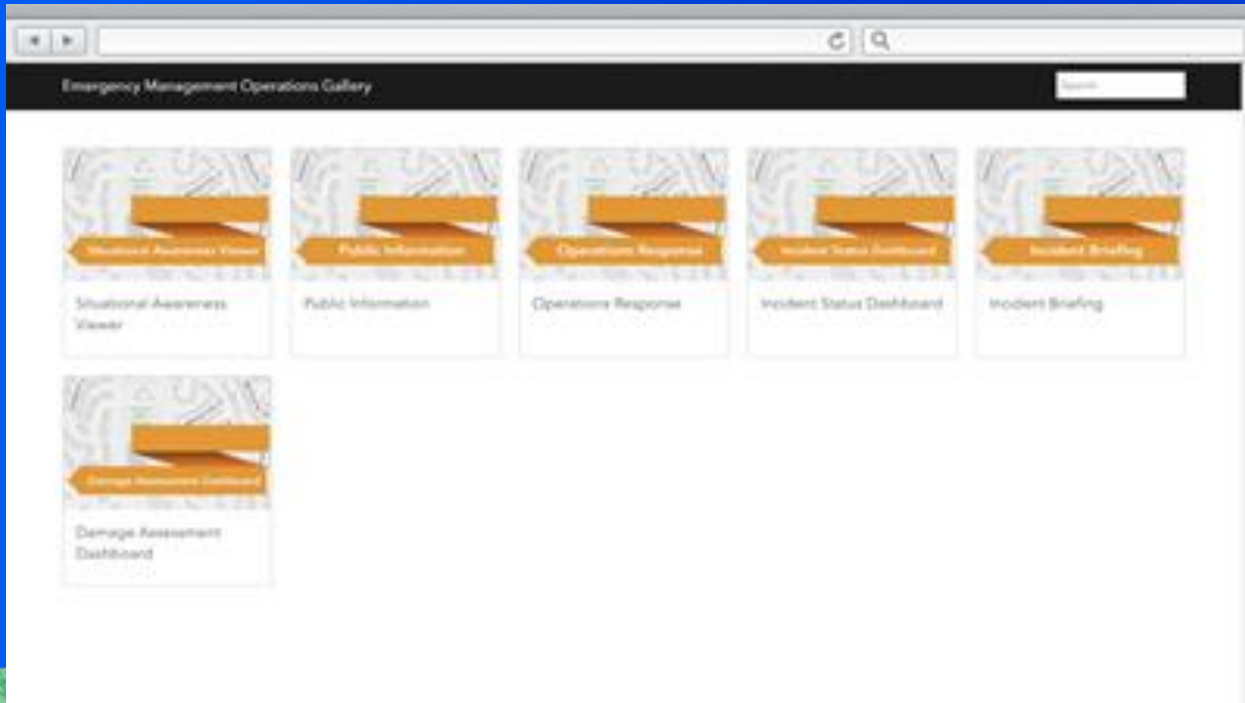
Challenges

- Remaining in a “constant state of preparedness”
- Understanding what, and who, is affected if an incident were to occur
- How to apply limited resources effectively
- Monitoring activity during dynamic conditions and providing real time operational briefs
- Conducting rapid damage assessment and ensuring community recovers effectively
- Communicating effectively with the public



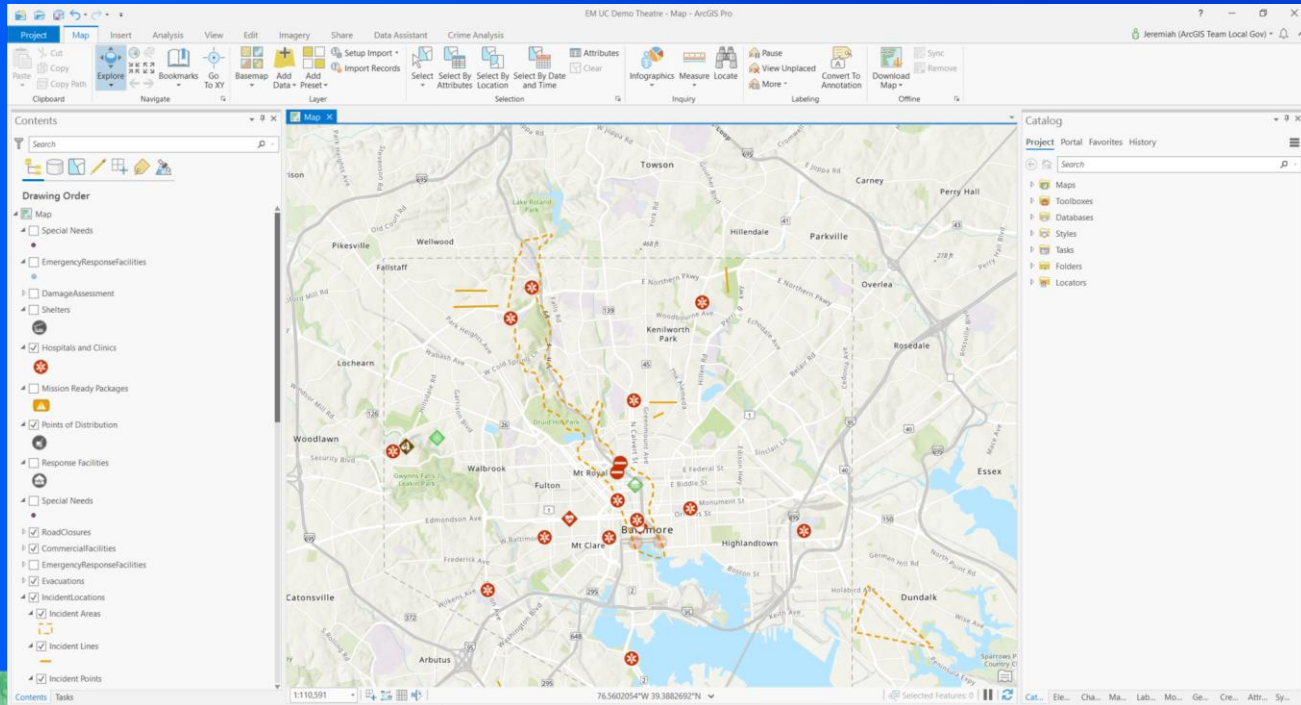
Emergency Management Solutions

1. Situational Awareness Viewer
 - Understand the impact of an incident on public infrastructure and human populations
2. Operations Response
 - Manage incident response activities and resources
3. Incident Status Dashboard
 - Measure progress on incident objectives in the Emergency Operations Center
4. Incident Briefing
 - Brief key stakeholders of the current status during an incident
5. Damage Assessment Dashboard and Surveys
 - Monitor initial field assessments and determine whether costs exceed state or federal thresholds
6. Public Information
 - Provide authoritative information and current status to the general public



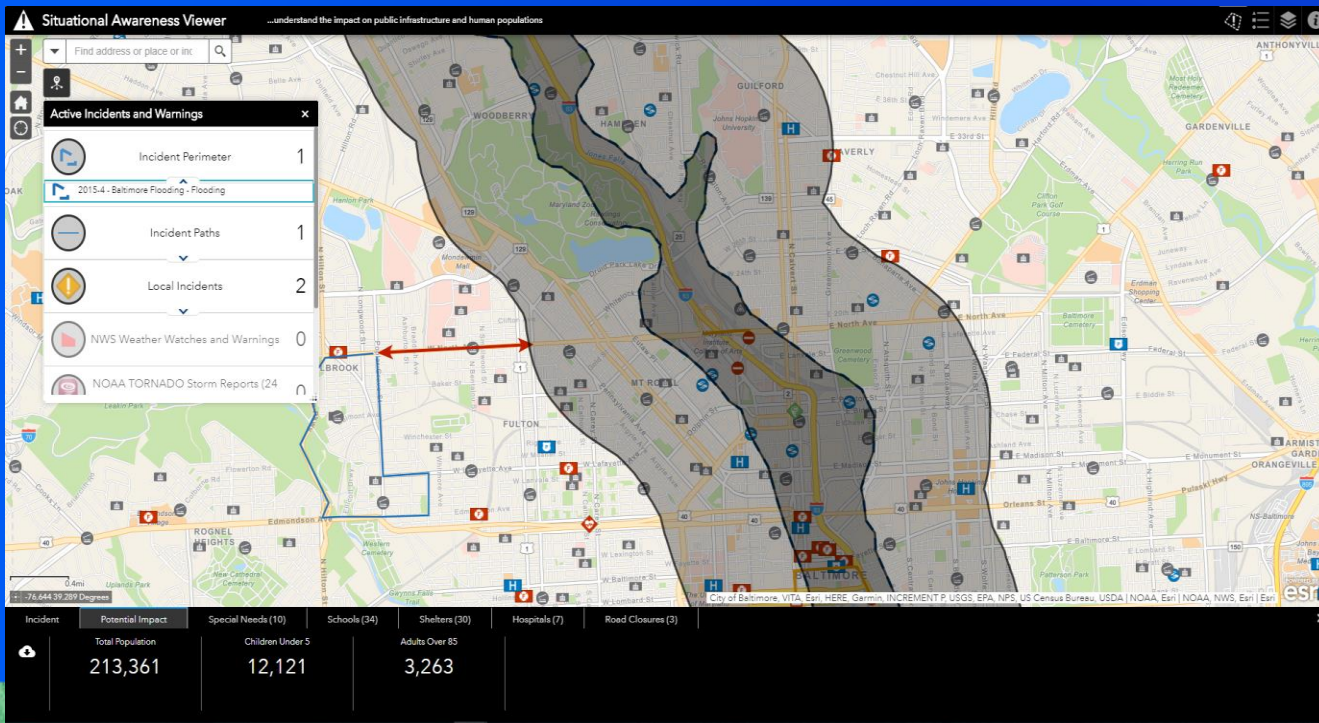
Show me

Overview of the solution



Show me

Publishing the Solution and Loading Data

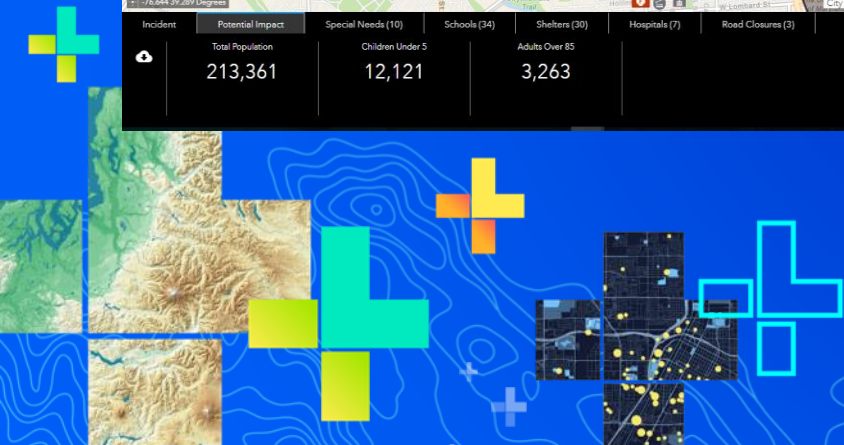


+

+


Show me

Adding Living Atlas Data



This report is designed to be printed on Letter ANSI A (8.5" X 11") Portrait Paper

Print Close

 Report

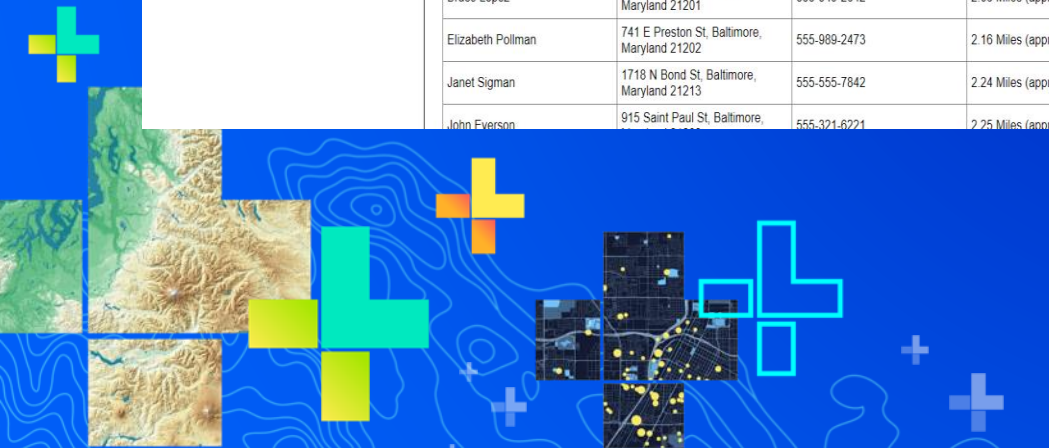
Potential Impact (Summary)

Total Population	Children Under 5	Adults Over 65
213,361	12,121	3,263

Special Needs (Proximity)

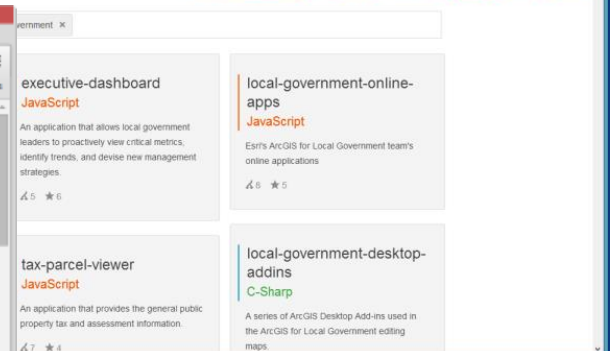
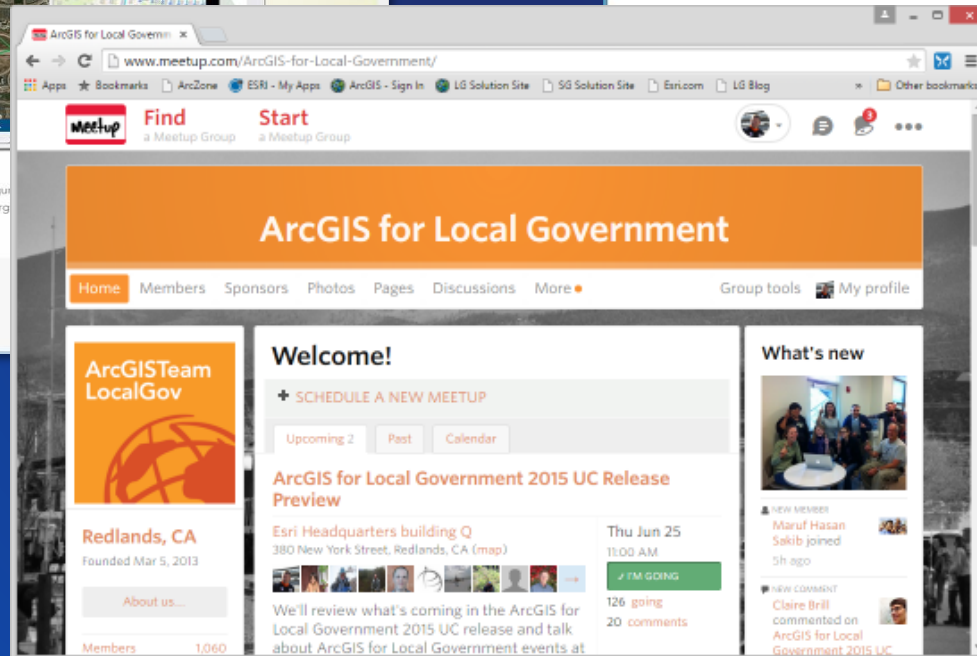
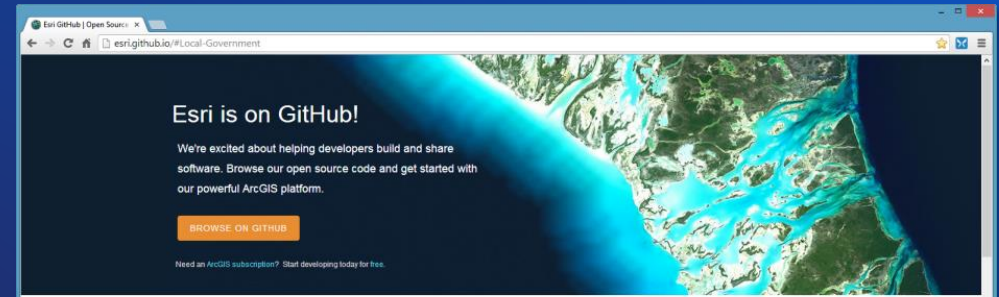
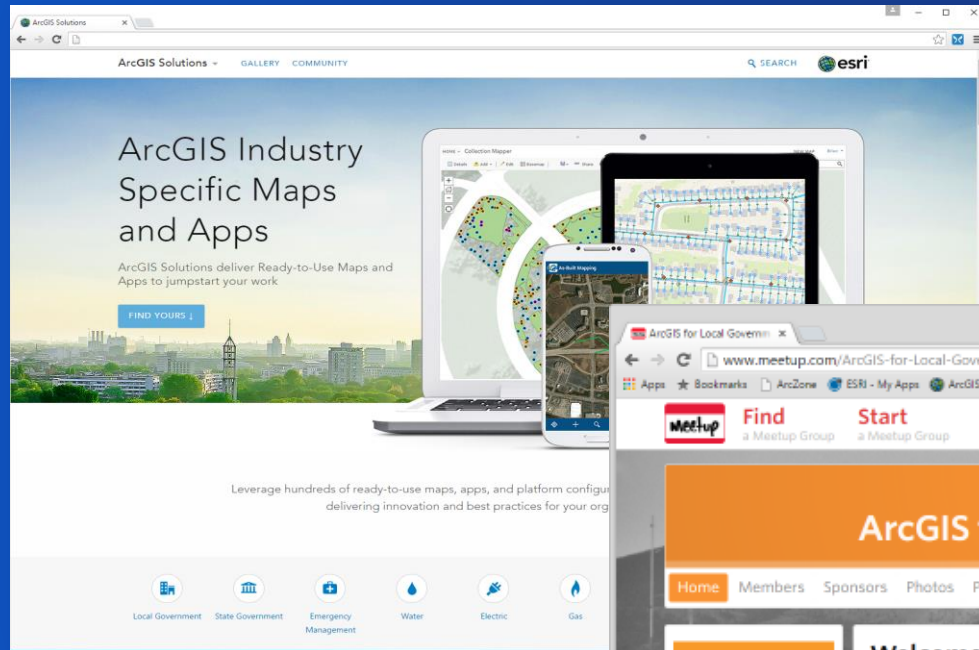
Contact Name	Full Address	Phone	DISTANCE
Julie Franklin	911 W 36th St, Baltimore, Maryland 21211	555-321-4722	0.12 Miles (approximate)
Xavier Washington	2030 Druid Park Dr, Baltimore, Maryland 21211	555-321-3784	0.9 Miles (approximate)
Roberto Martinez	1403 Park Ave, Baltimore, Maryland 21217	555-256-9425	1.64 Miles (approximate)
Nancy Peterson	222 W Lafayette Ave, Baltimore, Maryland 21217	555-321-2362	1.69 Miles (approximate)
Kelly Trudale	2030 Kennedy Ave, Baltimore, Maryland 21218	555-321-0963	1.79 Miles (approximate)
Bruce Lopez	223 W Chase St, Baltimore, Maryland 21201	555-340-2642	2.06 Miles (approximate)
Elizabeth Pollman	741 E Preston St, Baltimore, Maryland 21202	555-989-2473	2.16 Miles (approximate)
Janet Sigman	1718 N Bond St, Baltimore, Maryland 21213	555-555-7842	2.24 Miles (approximate)
John Everson	915 Saint Paul St, Baltimore, Maryland 21201	555-321-6221	2.25 Miles (approximate)

Show me
Branding Apps/Extending Reports



The Community

It's not just about the technology



Thank you

Be innovative, aware, and know you are not alone

Jeremiah Lindemann, Solution Engineer
State and Local Government Solutions

jlindemann@esri.com

 @jer_lindemann

 <http://solutions.arcgis.com/>

 <http://meetup.com/ArcGIS-for-Local-Government/>
<http://meetup.com/ArcGIS-for-State-Government/>

 @ArcGISLocalGov

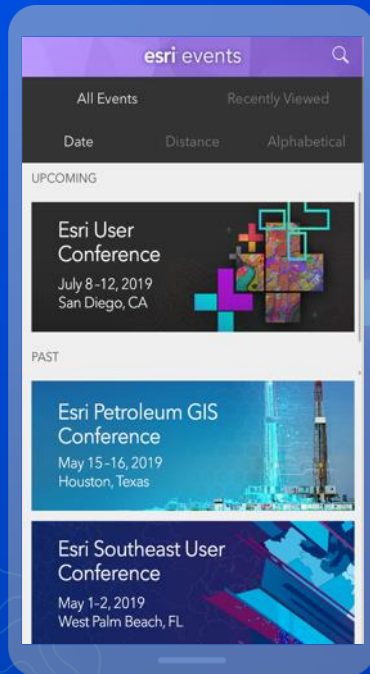
@ArcGISStateGov

 <http://esri.github.com>

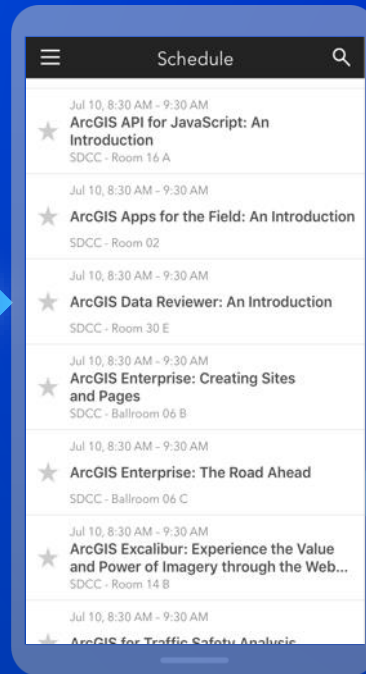


Please Share Your Feedback in the App

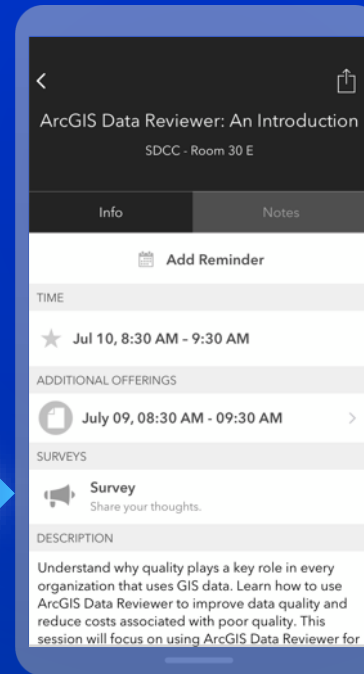
Download the Esri Events app and find your event



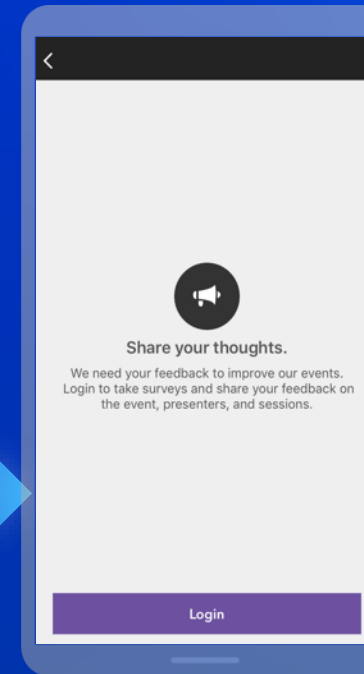
Select the session you attended



Scroll down to "Survey"



Log in to access the survey



Complete the survey and select "Submit"

