

---

**YOUR NAME**

**ADVANCED SKILLS**

**1.**

**2.**

**3.**

**WRITE A COUPLE OF SENTENCES ABOUT YOU**

---

---

---

---

**LOCATOR MEMBER ID** \_\_\_\_\_

*You will earn your member ID by the end of the book!*



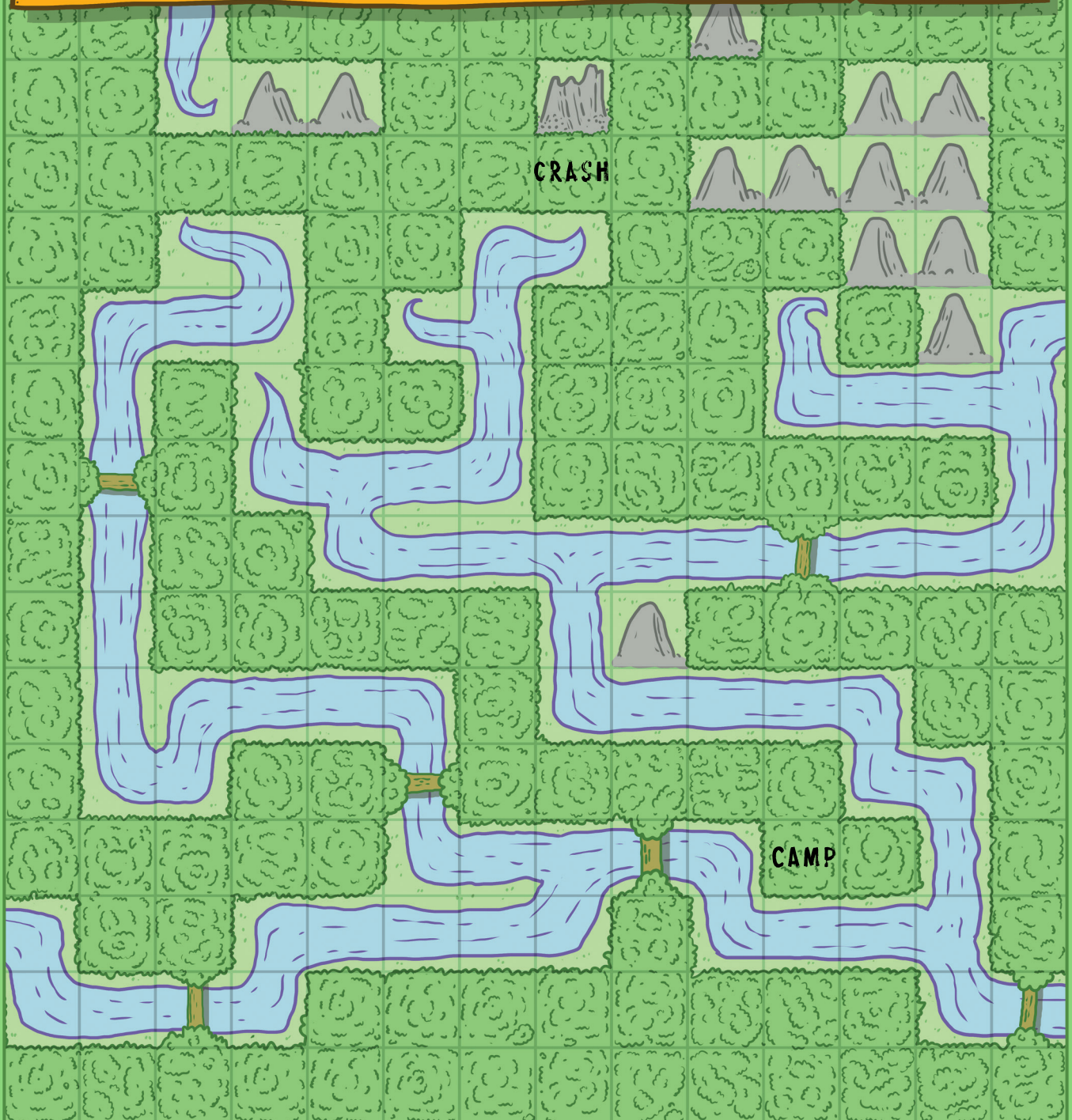




## LOCATE THE SHORTEST ROUTE

Draw the shortest path from the crash to the camp. Avoid rivers and mountains, and do not move diagonally. There are several routes, so think about why yours is the shortest.

MISSION 02





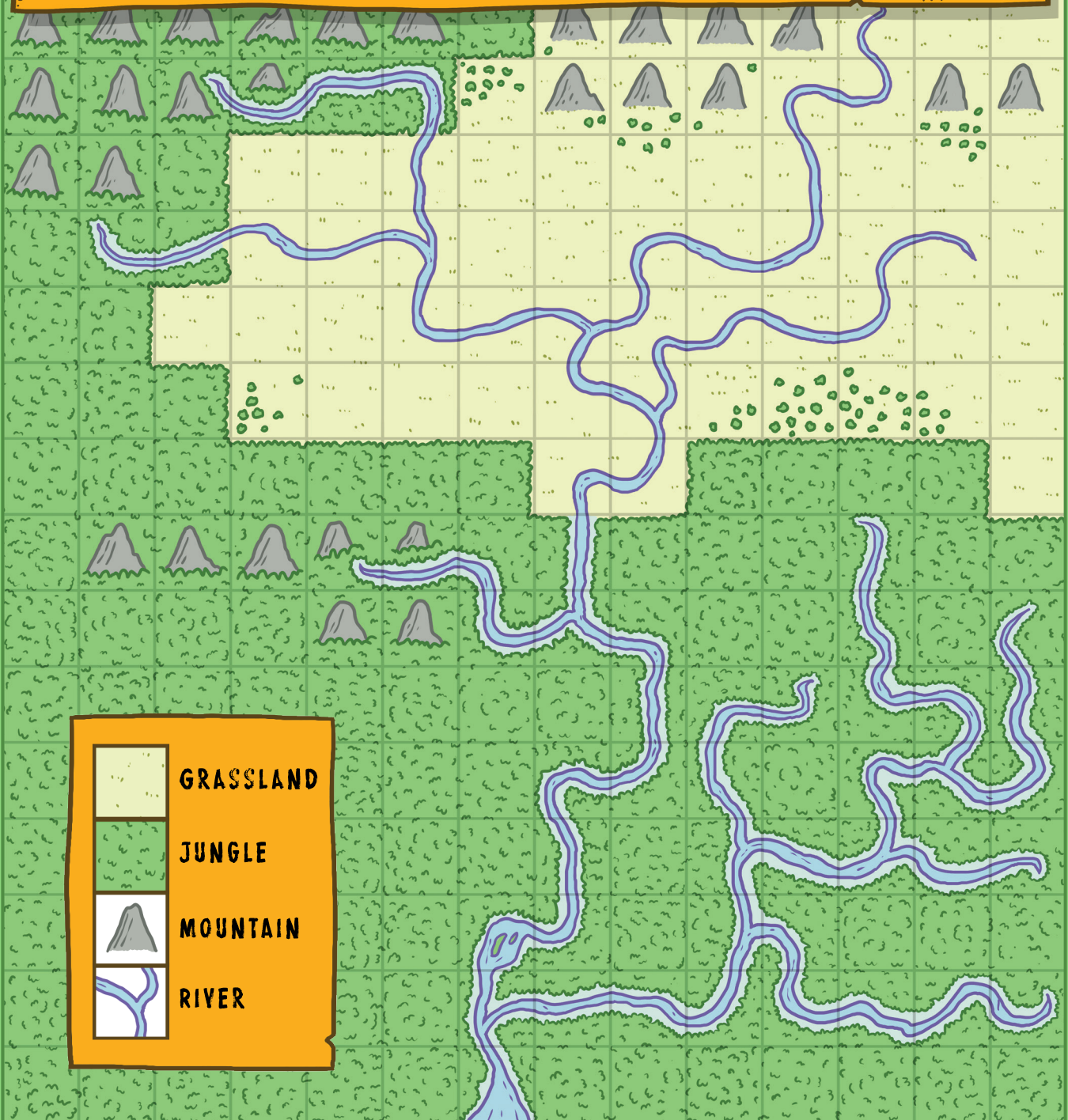


## LOCATE THE JAGUARS

Mark an X in squares that make good jaguar habitat. The squares need to contain both river and jungle. Remember, jaguars do not like grasslands or mountains. How many squares are there?

ANSWER \_\_\_\_\_

MISSION 03



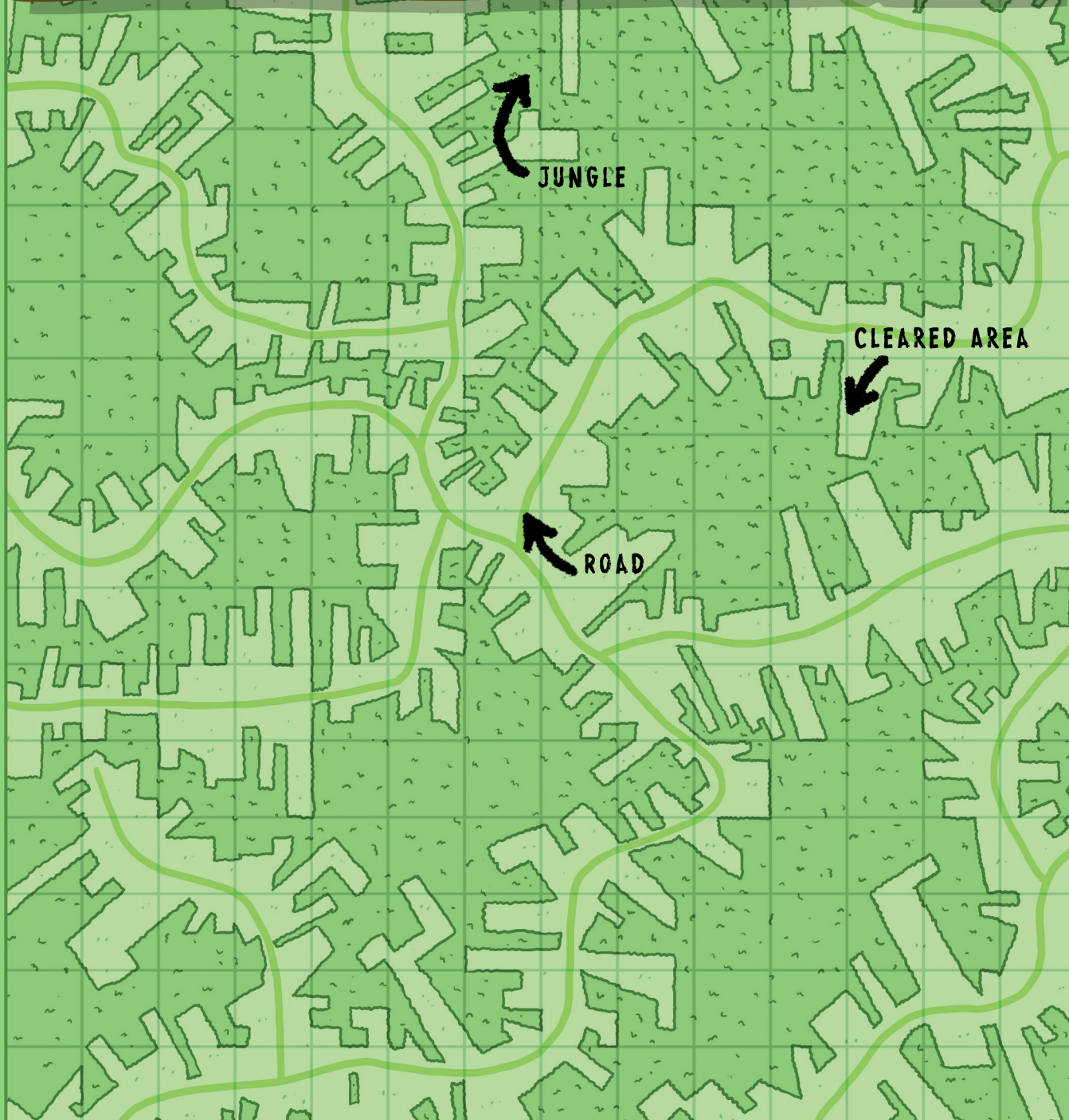
	GRASSLAND
	JUNGLE
	MOUNTAIN
	RIVER



## LOCATE THE DEFORESTATION

1. Mark an X on squares that are completely jungle. These are fully intact jungle squares.
2. There are several clusters of intact jungle squares. Outline the largest cluster.

MISSION 04



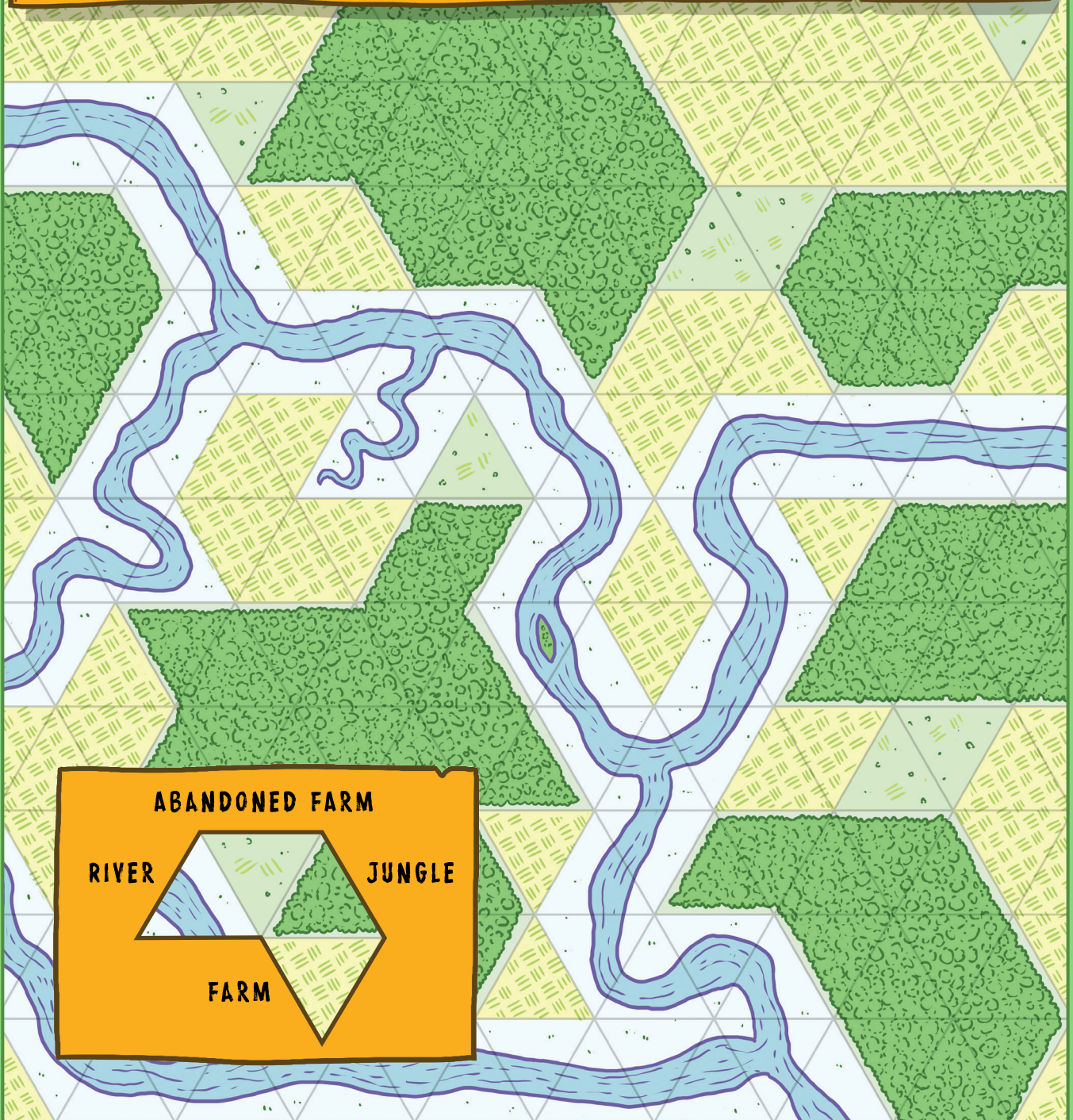


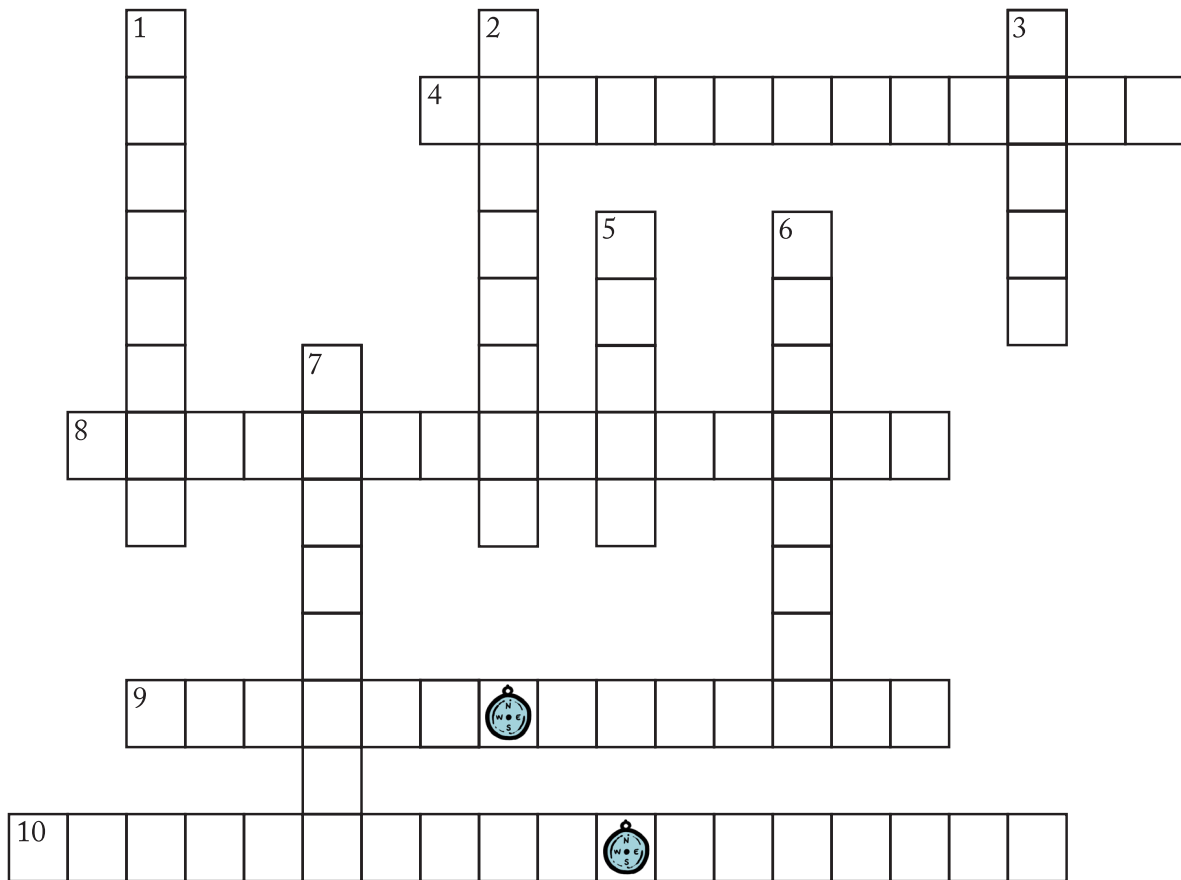


## LOCATE POSSIBLE CORRIDORS

Connect the separated jungles by drawing paths between them that create corridors. The paths can only be drawn through abandoned farms and rivers. Each path can go through a maximum of three triangles.

MISSION 05





## KEY WORDS FROM PART 1

*aerial imagery, basin, biome, conservationist, corridor, deforestation, endangered species, leaching, meridian, navigate*

## ACROSS

4. *The act or process of cutting down the trees of a forest*
8. *A person who acts for the protection and preservation of the environment and wildlife*
9. *Photographs taken from an aircraft or other flying object that show the earth's surface*
10. *A species of plant or animal that is in danger of becoming extinct*

## DOWN

1. *An area of habitat connecting wildlife populations that are separated by human activities or structures*
2. *Half of an imaginary great circle on the earth's surface that passes through the North and South Poles*
3. *An area that can be classified according to the plants and animals that live in it*
5. *A large area of land drained by a river*
6. *Plan and direct the route of travel, especially by using instruments or maps*
7. *The process of nutrients being removed from soil*



## LOCATE COQUIMBO

1. Circle the Coquimbo region.
2. How many regions are there in Chile? ANSWER \_\_\_\_\_

MISSION 06

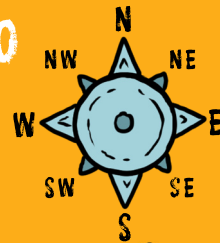






## LOCATE CERRO CENICERO

Circle the mountain Cerro Cenicero. It is 20 miles northeast of Las Chinchillas National Reserve. Use the scale bar to gauge the distance and the compass rose to find the direction.



MISSION 07

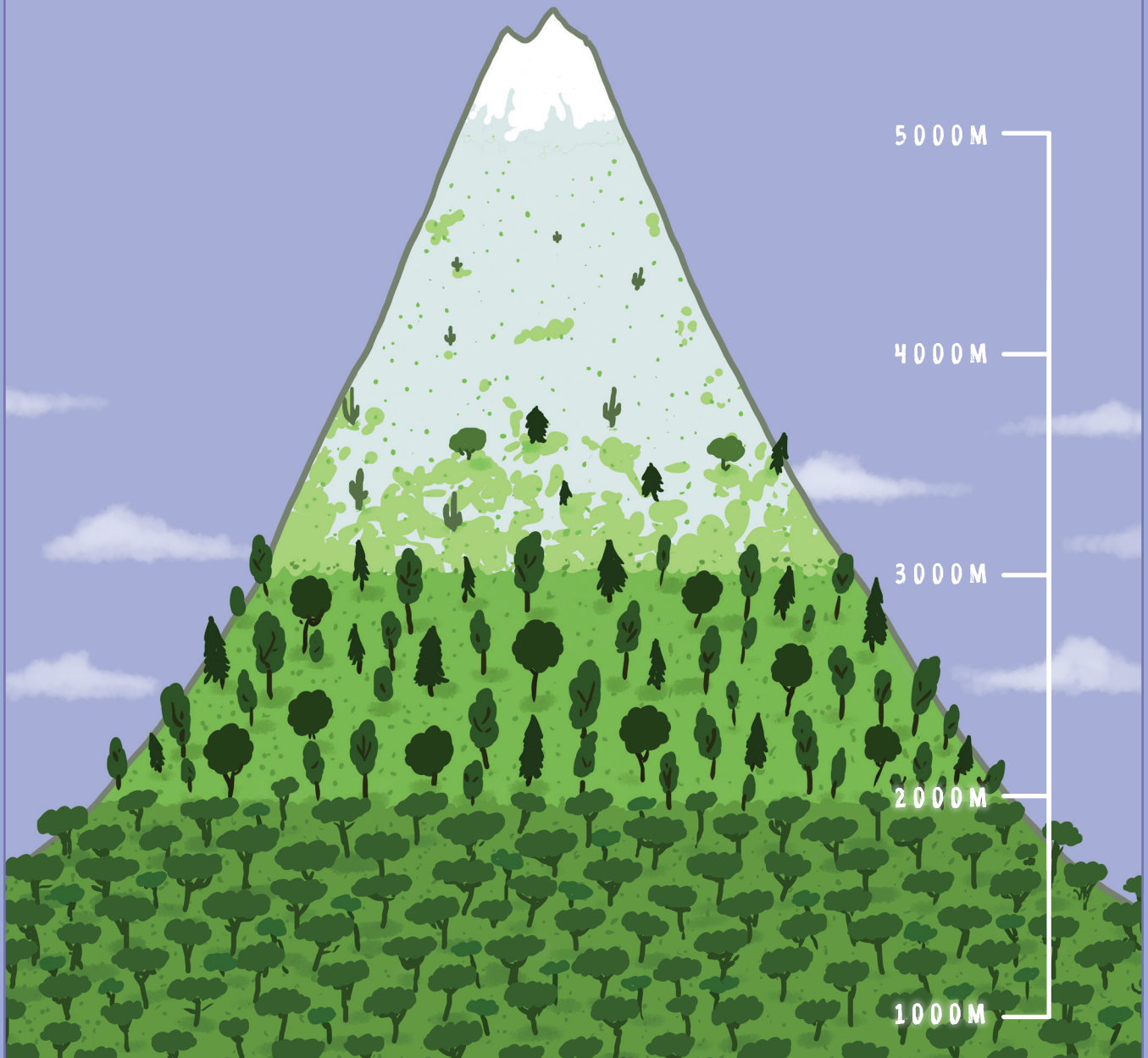




## LOCATE THE ALPINE BIOME

*Circle the alpine biome. Remember what Ranger Hernandez said, and look at the vegetation and terrain to determine the correct elevation.*

MISSION 08







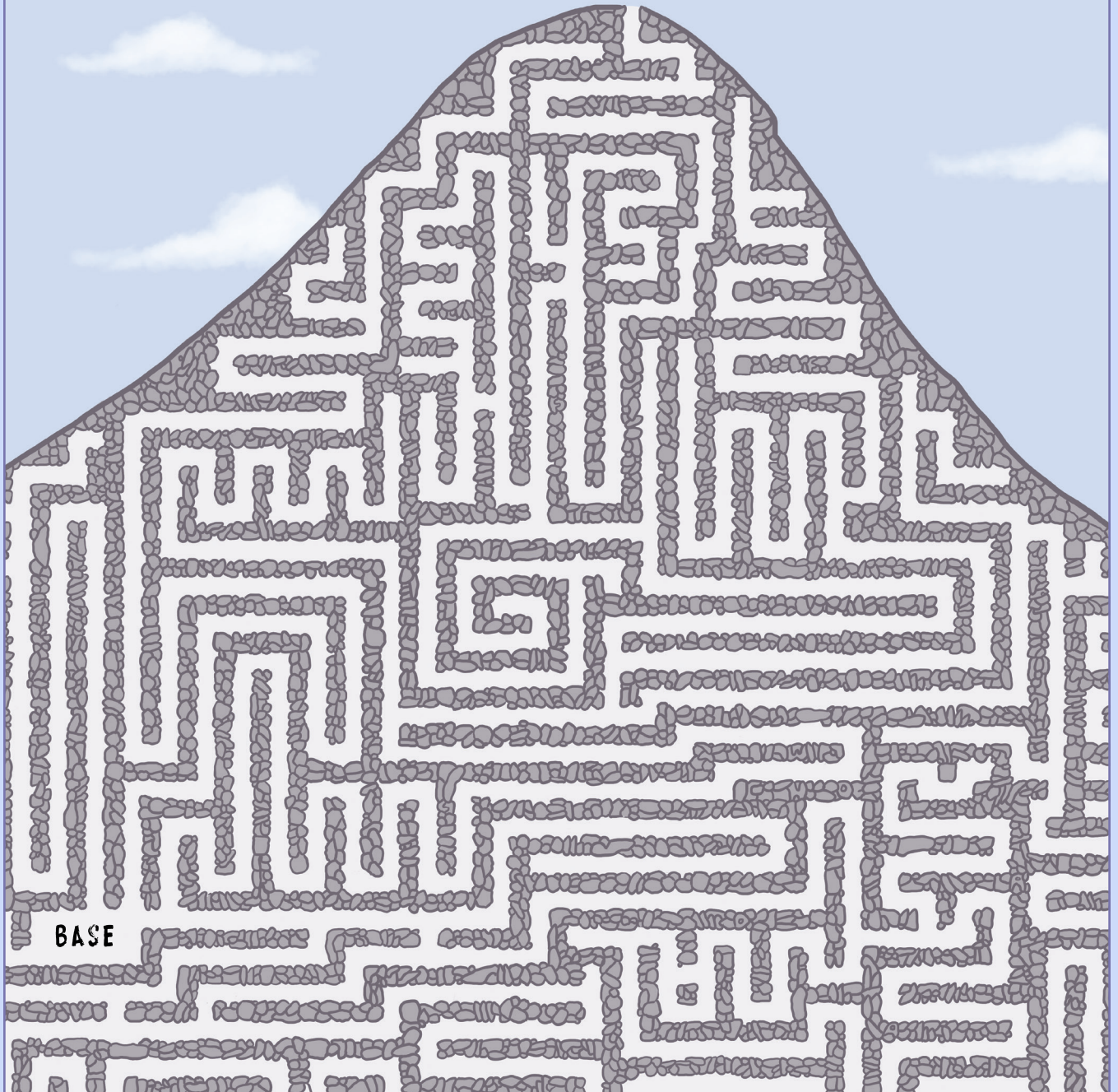
# DESTINATION: SUMMIT

*Draw a path up the mountain that navigates the team from the base to the mountain's summit.*

MISSION 09



SUMMIT



BASE





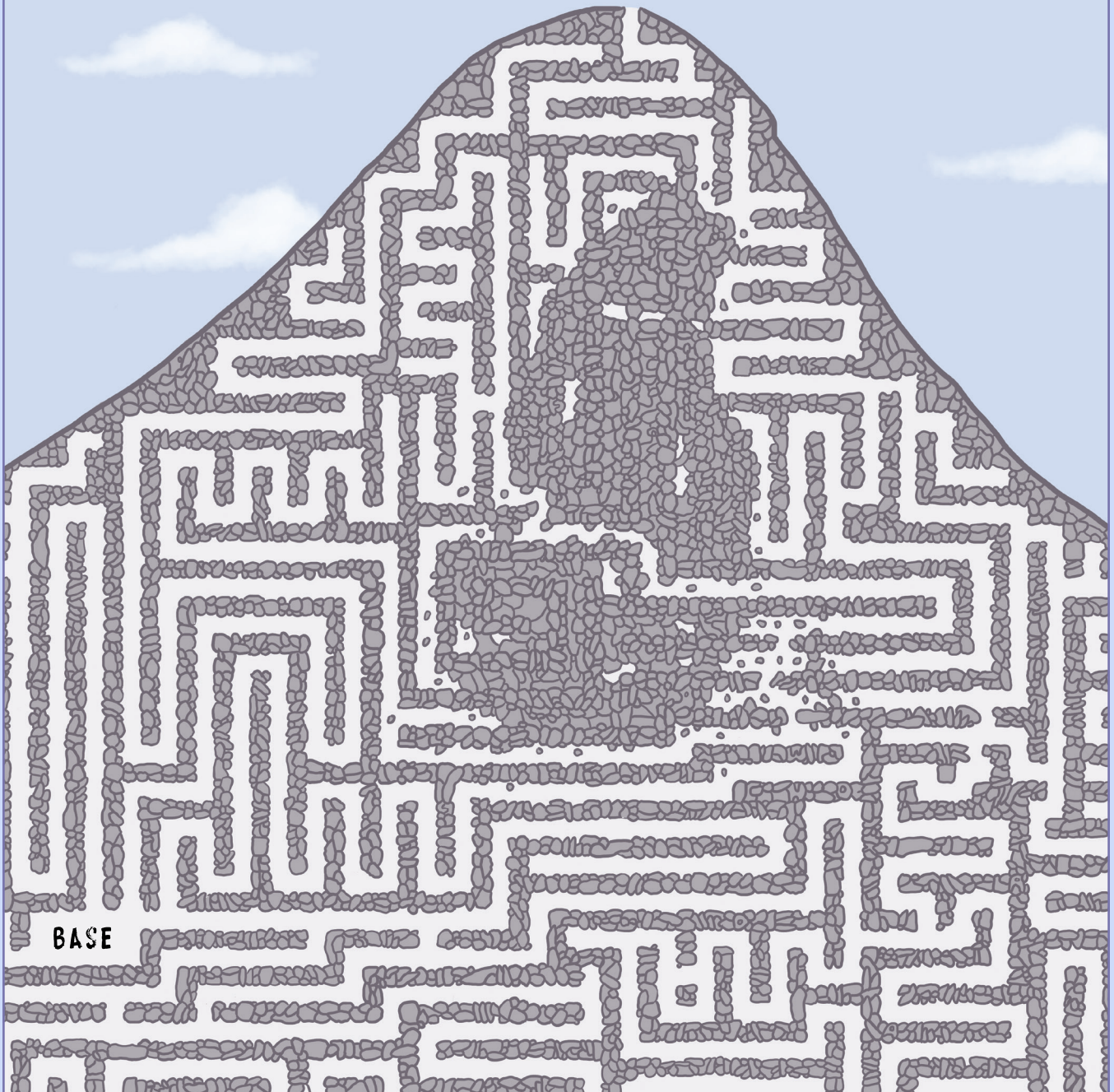
## FIND A NEW PATH

*Wow, that was a close one! An avalanche has changed the terrain. Draw a new path for the team from the base to the mountain's summit.*

MISSION 10



SUMMIT



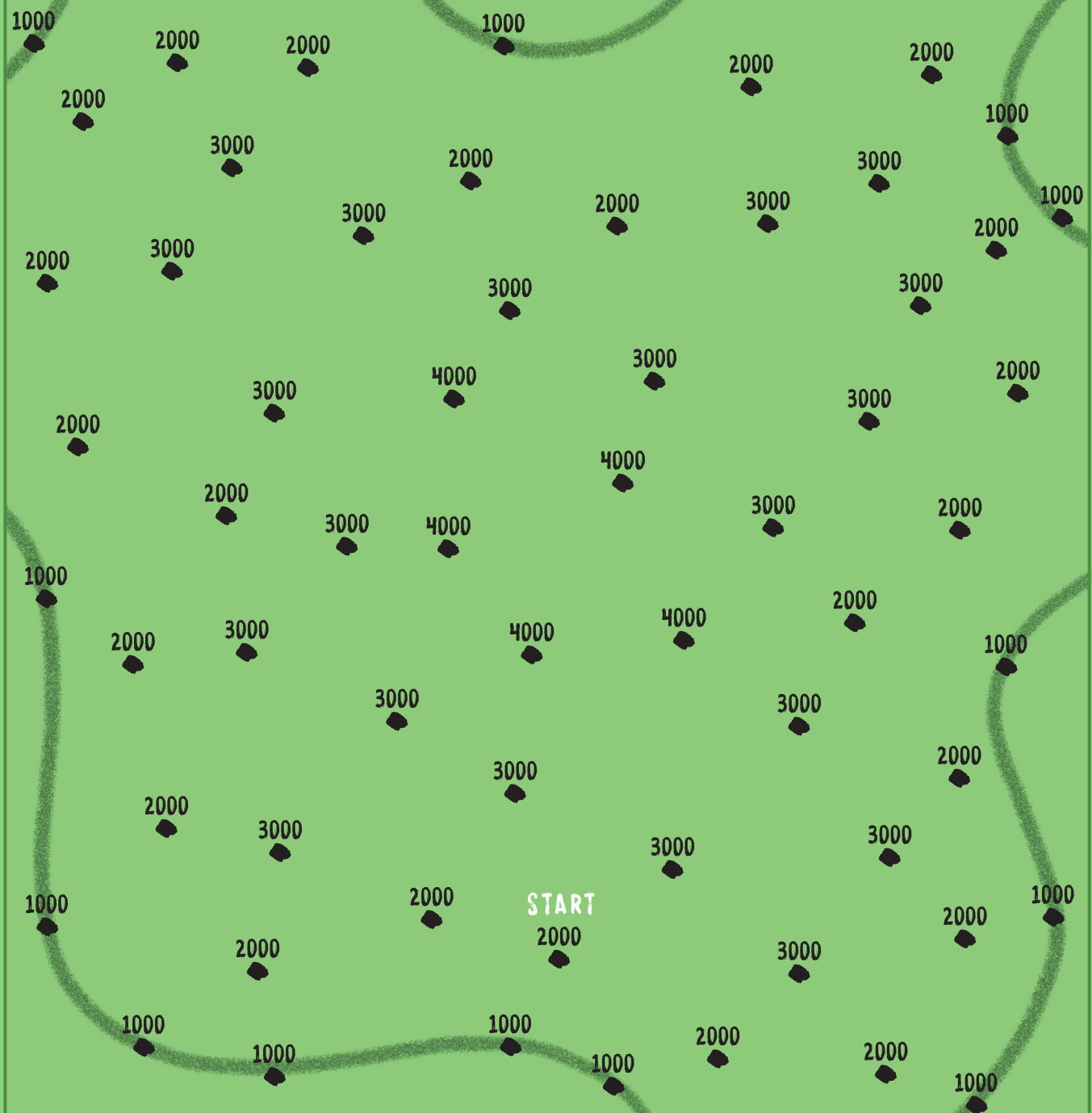
BASE



# LOCATE CHINCHILLA HABITAT

Connect the dots with the same values to create contours. Do not cross the lines. You will have three continuous lines (the 2000s, 3000s, and 4000s).

MISSION 11



O R E S E R V E P P K N U S D D Y  
 D P E A I L H U D R A S R O O G S  
 S C K V X J U Q U U O I E Z R J U  
 A G M A E G L I E E K V H T P P R  
 J O E L E V A T I O N T I G O C V  
 J K D A N L L E Y H F L W N A Z E  
 M O U N T A I N E E R I N G C E Y  
 N E A C E P O I O N O A V N H E C  
 F N D H H S W L O I I U X N E W R  
 A F A E E C G L E V F F T S R H C  
 W I T O P O G R A P H I C K I K R

**AVALANCHE**

*The sudden rush of a large amount of snow, ice, or rocks down a mountain*

**AVIAN**

*Of or relating to birds*

**ELEVATION**

*The height to which something rises or is raised, or its height above sea level or ground level*

**MOUNTAINEERING**

*The sport of climbing to high points in mountainous regions*

**POACHER**

*One who illegally hunts on another's property*

**PROVINCE**

*A division of a country*

**RESERVE**

*The area of land that is protected and managed in order to preserve the habitat and flora*

**SURVEY**

*To examine carefully*

**TOPOGRAPHIC**

*A type of map that uses contour lines to show the shape of the earth's surface*





## IDENTIFY MAP FEATURES

Write the four main types of things (map features) that you see on the map.

- 1.
- 2.
- 3.
- 4.

MISSION 12

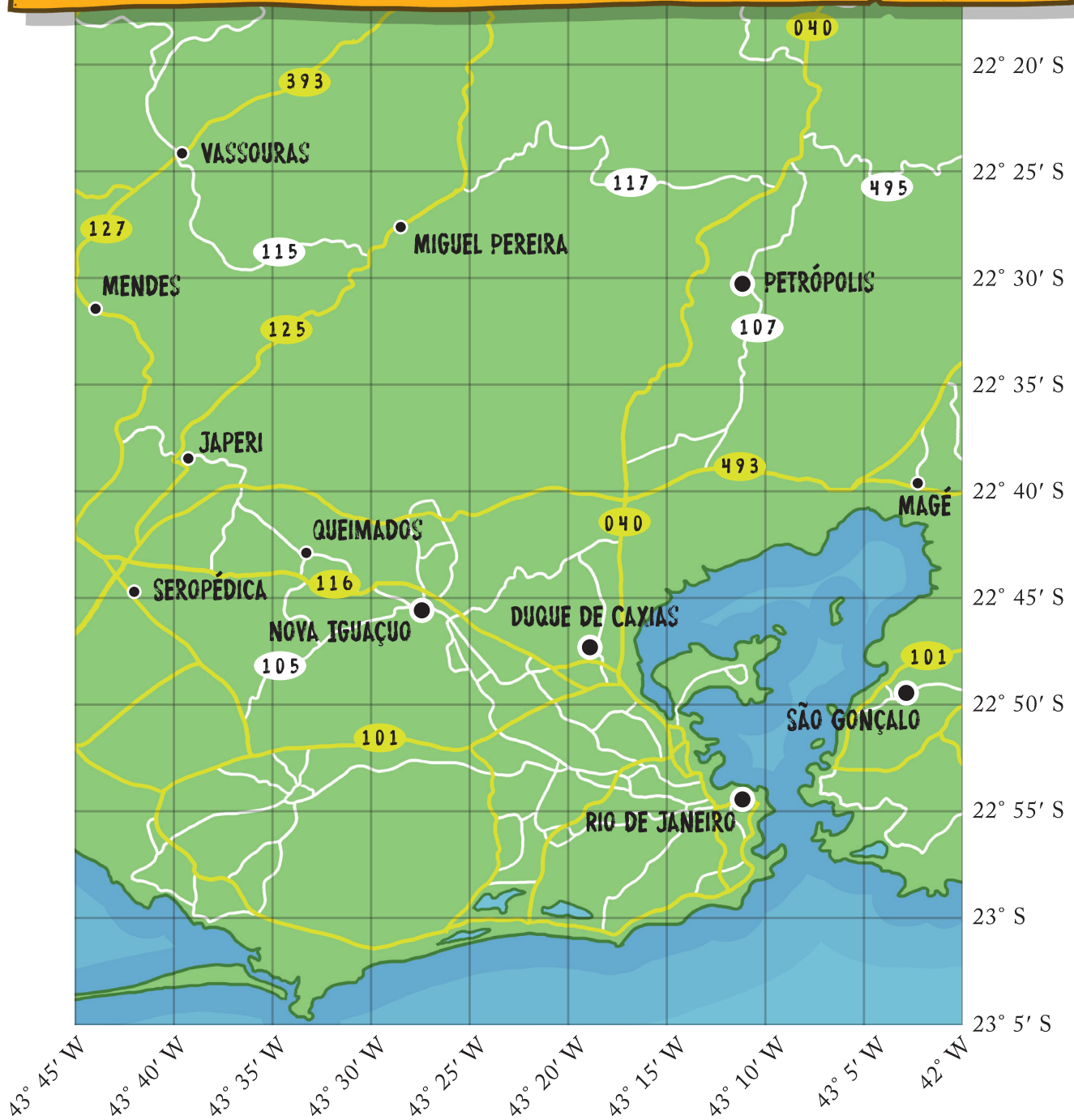




## USE THE GRID

Find where the Atlantic coastal forest is located by marking an X at the intersection of  $22^{\circ} 35' S$  and  $43^{\circ} 15' W$ . Use the numbers (coordinates) along the side and bottom of the map.

MISSION 13



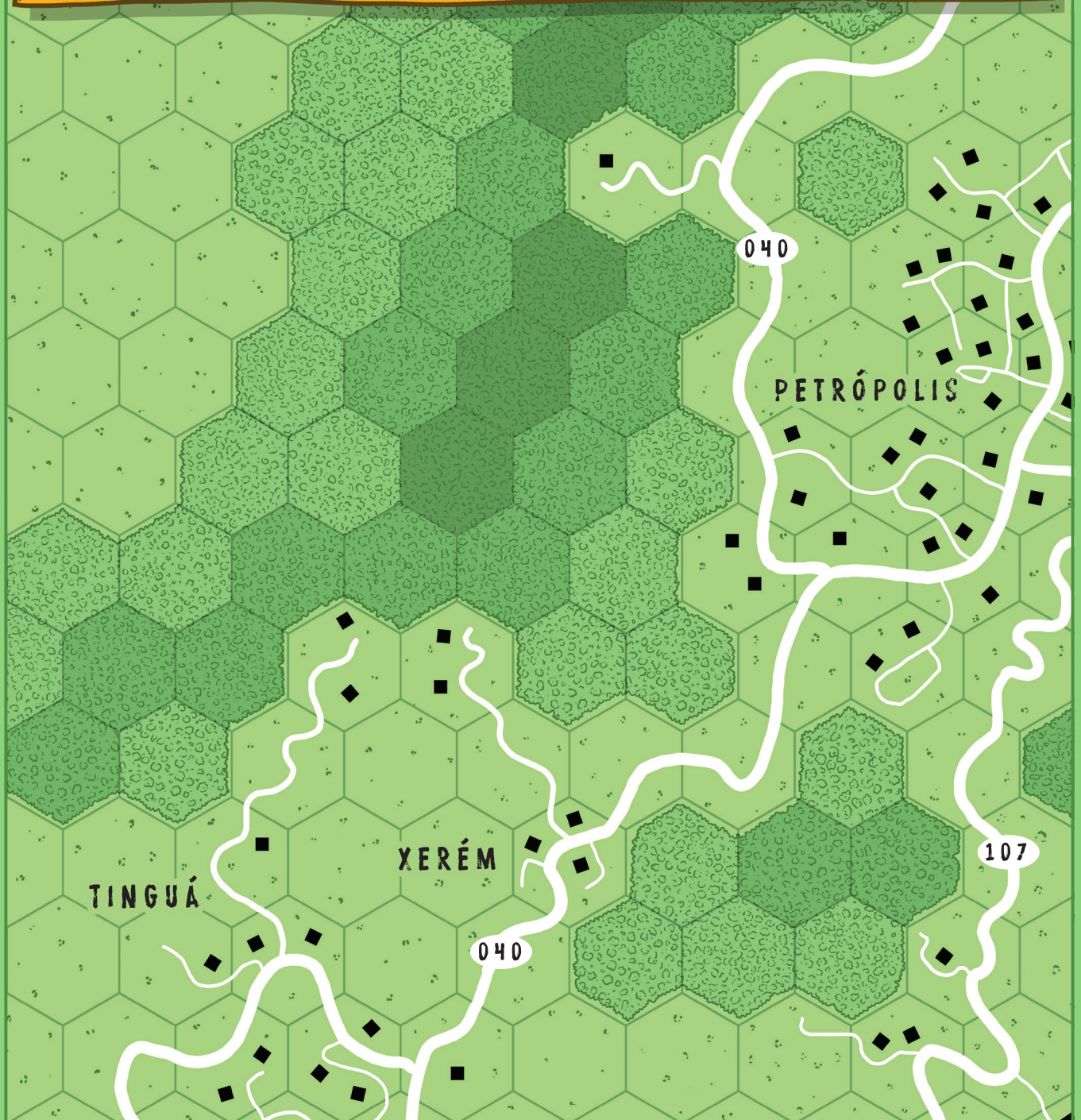




## LOCATE POSSIBLE NEW HOUSING

Mark an X on forest hexagons at risk of being developed. Forest hexagons adjacent to roads are at risk. However, there are 3 elevation levels in the forest. The darkest is the highest, and it is not at risk.

MISSION 14



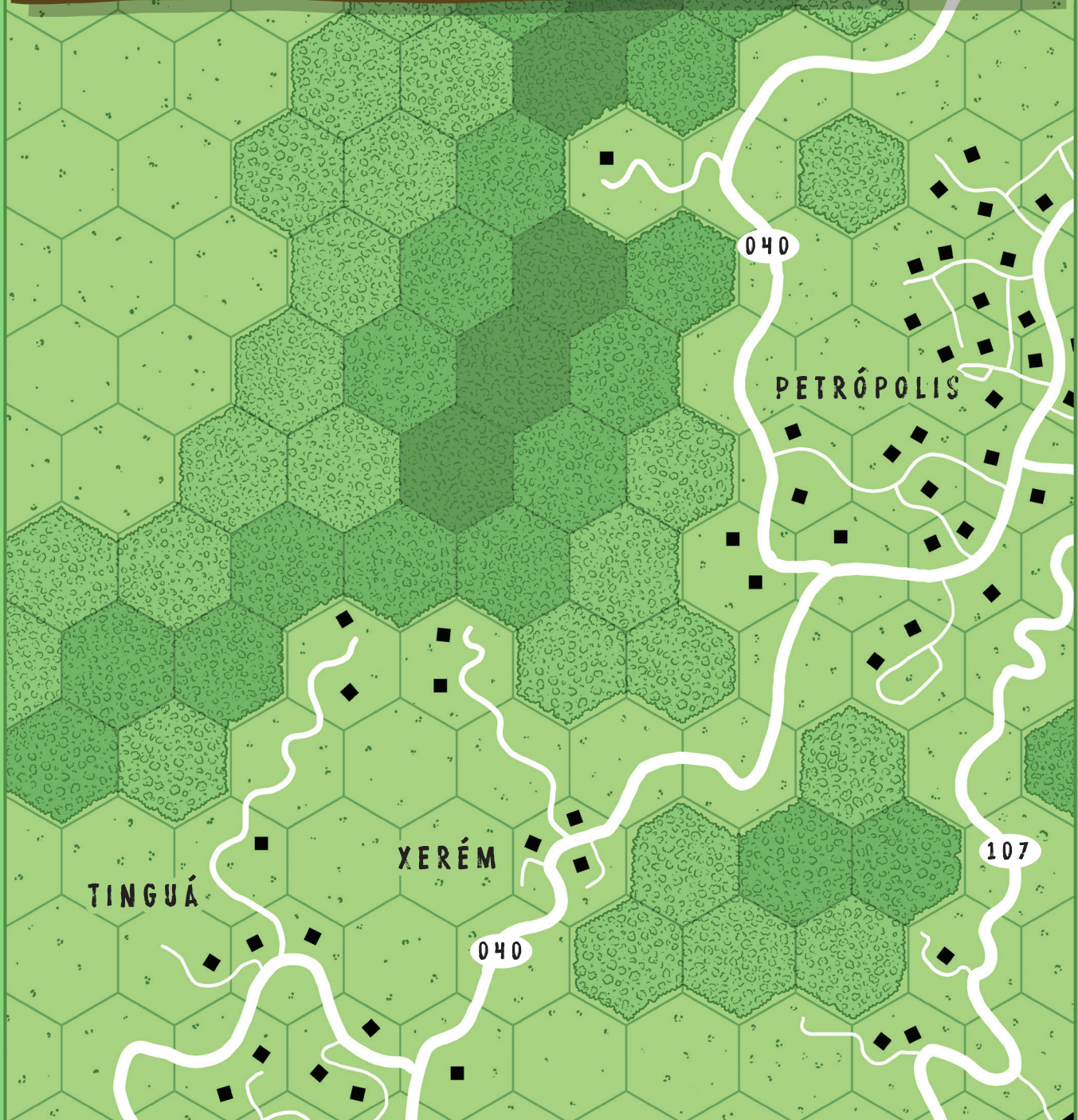




## LOCATE WHERE TO PLANT TREES

Mark an X on hexagons that are best for planting new trees. These should be adjacent to the established forest but not adjacent to roads or buildings. Sometimes it is hard to find a lot of good options.

MISSION 15





*Remember to check Part 3 for the key words if you need help!*

**RAHOGPATRCER**

*A person who draws or makes maps*

**IOBVTANOSER**

*An act of watching someone or something carefully in order to gain information*

**TORDOANCISE**

*A pair of numbers that identify a point on a map*

**CHYLASIP PAM**

*A map that shows physical features such as mountains, rivers, and lakes*

**TOSEBULA**

*Referring to the location of a place based on a fixed point on earth*

**IIAOLLTPC AMP**

*A map that shows government boundaries for countries, states, and towns*

**VLIEAETR**

*Referring to the position of a place or entity based on its location with respect to other locations*

**NEEROIOCG**

*An area of land or water containing geographically distinct species, natural communities, and environmental conditions*



## A LONG JOURNEY

Use the scale bar to determine how far the Galápagos Islands are from Ecuador. Measure between the dots. You will need more than one scale bar. ANSWER \_\_\_\_\_

MISSION 16



GALÁPAGOS ISLANDS

PACIFIC OCEAN

ECUADOR

COLOMBIA

PERU









# LAVA FLOW AND TORTOISES

1. The lava flow may have changed! As before, color and outline the affected area. Remember, the lava will spread to equal or lower elevations (not diagonally).
2. Circle the tortoise populations in trouble.

MISSION 18







# PLANNING FOR ANOTHER

1. The shaded area is the path of destruction from the first eruption. Color and outline the area that would be at risk from a lava flow from the other volcano. Follow the same elevation rules as before.
2. Circle all the safe tortoise populations.

MISSION 19



**A B C D E F G H I J K L M**  
 4 18 14 8 22 1 17 24 12 11 19 5 15

**N O P Q R S T U V W X Y Z**  
 9 3 13 20 10 21 7 25 23 2 26 16 6

12 9 23 4 21 12 23 22

21 13 22 14 12 22 21

*An organism that is not native to a particular area*

22 14 25 4 8 3 10

*A country in western South America with the capital Quito*

4 10 14 24 12 13 22 5 4 17 3

*A group of islands*

5 4 23 4

*Hot, melted rock that erupts from a volcano*

22 10 25 13 7 12 3 9

*When hot materials from the earth's interior are thrown out of a volcano*

24 22 10 18 12 23 3 10 22

*An animal that only feeds on plants*

