

ArcGIS® for JavaScript™ Developers

Create Fast, Effective Mash-up Style Web Applications

The **ArcGIS® API for JavaScript™** is an easy-to-use framework for building lightweight Web mapping applications on top of ArcGIS Server.

What can you do with the ArcGIS API for JavaScript?

Access maps and tasks from ArcGIS Server in your Web applications.

- Display an interactive map of your own data.
- Search for features or attributes in your geographic information system (GIS) data and display the results.
- Search for addresses and display the results.
- Display your data on an ArcGIS™ Online basemap.
- Execute a GIS model on the server and display the results.

What is included in the ArcGIS API for JavaScript?

Build custom Web applications that deliver advanced GIS solutions.

- **Map component**—Support both dynamic and cached (tiled) map services from ArcGIS Server.
- **Graphics**—You can enhance your Web applications by allowing users to draw graphics or by providing informational pop-up windows when the user clicks or hovers the mouse.
- **Tasks**—Classes and methods for common GIS tasks are included:
 - Querying
 - Finding addresses
 - Finding attributes
 - Identifying features
 - Geoprocessing
- **Access to Dojo and other libraries**—The ArcGIS API for JavaScript is built on the Dojo JavaScript Toolkit, providing you with access to dijits (Dojo widgets) and other JavaScript tools. You can also integrate other libraries in your applications such as the Google Chart API.

Additional JavaScript APIs

ESRI provides two other ways to embed ArcGIS Server functionality in your Web pages with JavaScript.

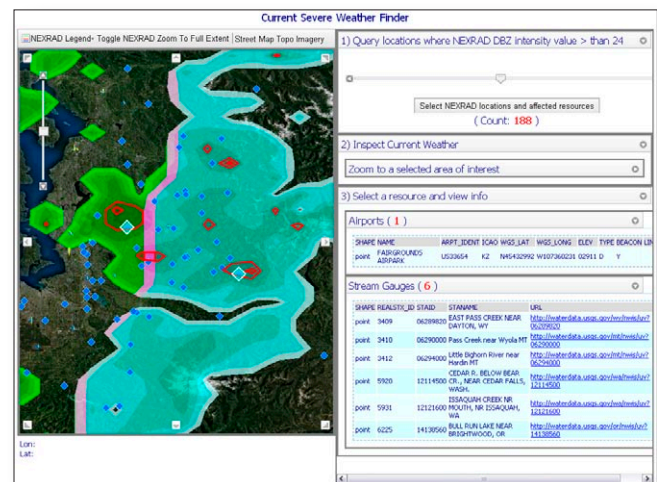
- The ArcGIS JavaScript Extension for the Google Maps™ API gives you a way to work with your GIS services in the framework of Google Maps and other Google® APIs.
- The ArcGIS JavaScript Extension for Virtual Earth™ lets you access your GIS resources from a Microsoft® Virtual Earth control in 2D or 3D.

Getting started with the ArcGIS API for JavaScript

The ArcGIS JavaScript APIs are designed for developers who want to create a Web-based mapping application quickly and spend less time coding.

- Nothing to download—just write some HTML and JavaScript code.
- Deploy your Web application or embed it in a Web page.

With the ArcGIS API for JavaScript, ESRI offers exciting opportunities for developers to build open GIS Web applications that can be deployed in most browser environments.



Severe Weather Finder mashup is built with ArcGIS API for JavaScript.

Learn more about integrating ArcGIS Server in your applications.

In the United States, call ESRI at **1-800-447-9778**. Send e-mail inquiries to info@esri.com.

Outside the United States, contact your local ESRI distributor at www.esri.com/distributors.

Visit ESRI's Web page at www.esri.com/arcgisserver.

