

ArcGIS® for Flex™ Developers

Create Fast, Visually Rich, and Expressive Web Applications

The **ArcGIS® API for Flex™** is a powerful framework for building rich Internet applications (RIAs) on top of ArcGIS Server.

What can you do with the ArcGIS API for Flex?

Display maps and execute tasks from ArcGIS Server in your applications.

- Display an interactive map of your own data.
- Execute a geographic information system (GIS) model on the server and display the results.
- Display your data on an ArcGIS™ Online basemap.
- Search for features or attributes in your GIS data and display the results.
- Locate addresses and display the results.
- Create mashups (combine information from multiple Web sources).

What is included in the ArcGIS API for Flex?

Components help you build custom applications that deliver advanced GIS solutions.

- **Maps**—Support both dynamic and cached (tiled) map services from ArcGIS Server and work with different projections.
- **Graphics**—Gain the ability to draw graphics or provide pop-up windows when clicking or hovering the mouse.
- **Tasks**—Support for the following classes and methods for common GIS tasks is included:
 - Querying
 - Locating addresses
 - Searching attributes
 - Identifying features
 - Geoprocessing
- **Access to Flex components**—The API is built on the Adobe Flex framework, which allows you to use rich Flex components such as
 - Data grid
 - Trees
 - Panels
 - Charts

Getting started with the ArcGIS API for Flex

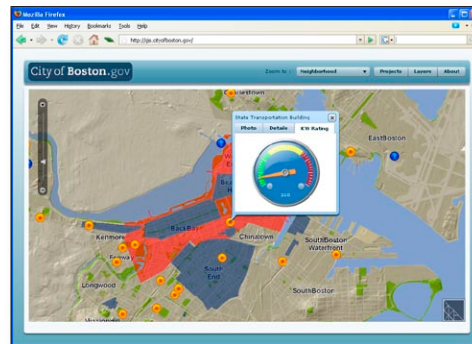
The API is designed for developers who want to create a Web-based mapping application quickly and spend less time coding.

1. Download the ArcGIS API for Flex library from the resource center.
2. Write code using Flex Builder to access the ArcGIS Server resources.
3. Compile the code to create your application.
4. Deploy your application.

The ArcGIS API for Flex Resource Center provides

- Essential concepts and the latest documentation
- Online samples that demonstrate the various functionalities such as
 - Mapping
 - Symbols
 - Events
 - Tasks
- API reference for the available classes and their methods and properties
- Links to the ArcGIS API for Flex community including announcements and blogs

With the ArcGIS API for Flex, ESRI offers exciting opportunities for developers to build open GIS Web applications that can be deployed on most browser or desktop environments.



Site kilowatt rating Web application is built with ArcGIS API for Flex. (Courtesy of the City of Boston)

Learn more about integrating ArcGIS Server in your applications.

In the United States, call ESRI at **1-800-447-9778**. Send e-mail inquiries to **info@esri.com**.

Outside the United States, contact your local ESRI distributor at **www.esri.com/distributors**.

Visit ESRI's Web page at **www.esri.com/arcgisserver**.

